



Glasgow City Council

**Briefing Paper by Executive Director of Development and
Regeneration Services**

Contact: Jan Freeke

Phone: (0141) 287 8647

POPULATION AND HOUSEHOLD PROJECTIONS 2012 - 2022

FOR GLASGOW CITY'S 21 MULTI-MEMBER WARDS

And a Comparison with Recent Changes 2002 - 2012

Date of Issue: 20 August 2015

PLEASE NOTE THE FOLLOWING:

Any Ordnance Survey mapping included within this Report is provided by Glasgow City Council under licence from the Ordnance Survey in order to fulfil its public function to make available Council-held public domain information. Persons viewing this mapping should contact Ordnance Survey Copyright for advice where they wish to licence Ordnance Survey mapping/map data for their own use. The OS web site can be found at <http://www.ordnancesurvey.co.uk> " If accessing this Report via the Internet, please note that any mapping is for illustrative purposes only and is not true to any marked scale

1 INTRODUCTION

- 1.1 The 2012-base population and household projections for Scotland's Council areas were published by National Records of Scotland (NRS) on 14th May 2014 and 30th July 2014. A report "Demographic Changes in Glasgow City and Neighbourhoods" was discussed by the Council's Regeneration and the Economy Policy Development Committee on 30th September 2014. It presented the results of the NRS projections for Glasgow City and described the main demographic changes in Glasgow's neighbourhoods between the Census years 2001 and 2011.
- 1.2 The analysis of 2001 and 2011 Census data showed the wide variation in rates of demographic change for areas in Glasgow. This resulted in a commitment, by the Council's Development and Regeneration Services (DRS), to prepare population projections for areas ***within*** the City, consistent with the NRS projections for Glasgow City. This briefing paper gives the projection results for Glasgow's 21 Multi Member Wards (MMWs).

2 MAIN RESULTS

- 2.1 ***In Glasgow City, the population is expected to grow by 3,450 per year and the number of households by 2,600 per year, in the period 2012 to 2022.*** This compares with a rise in the population of 1,850 per year and in the number of households of 1,300 per year in the recent period 2002 to 2012.
- 2.2 The Wards with the highest projected population growth in 2012 to 2022 are Calton and North East. In the recent period 2002 to 2012 the highest population growth took place in Anderston/City.
- 2.3 The number of children fell by 850 per year in 2002-2012 but is expected to rise by 1,300 per year in 2012-2022. The projected rise in the number of children during 2012-2022 is concentrated in the following Wards: Calton and Anderston/City (in the City Centre), Partick West, Maryhill/Kelvin and Canal (in the North West), East Centre and North East (in the North East) and Govan, Southside Central and Langside (in the South).
- 2.4 The number of elderly fell by 650 per year in 2002-2012 but is expected to rise by 750 per year in 2012-2022. The projected rise in the number of elderly during 2012-2022 is concentrated in Greater Pollok, Pollokshields, Langside and Linn (in Glasgow South) and in North East, Baillieston, Partick West and Maryhill/Kelvin (in Glasgow North).

3 APPROACH AND METHODOLOGY

- 3.1 NRS use the cohort component methodology for their sub national projections. The projections for Glasgow's MMWs have been prepared by DRS with the same methodology, using the POPGROUP population and household projection software. A description of the methodology is given in Appendix A.
- 3.2 NRS make clear that their projections indicate what is likely to happen *if past trends continue*. Projections are not forecasts and they do not account for, amongst others, changes in policies. The same is true for the MMW projections, *which have been based on the assumption of past change continuing into the future*. As explained in Appendix A, DRS have taken planned changes to the dwelling stock into account, when setting migration assumptions. Of course this implies that if actual housing completions differ from current plans, then the actual population change will be different from projected values.
- 3.3 The NRS projections for Glasgow City cover a 25-year period, i.e. 2012 to 2037. Because reliable estimates of projected dwelling change are not available for such a long period, the MMW projections have been prepared for a ten-year period only. In this paper the projection results for the period 2012 to 2022 are compared with estimated change during the previous decade, 2002 to 2012.
- 3.4 This paper discusses a set of results which are consistent with the NRS principal projection results for Glasgow City. It should be noted that the Committee report, referred to in paragraph 1.1, expressed concern that the NRS principal projections may be too high and suggested that the lower migration scenario results may be more realistic. However, the projections for MMWs have been constrained to the NRS principal projection results for Glasgow City, given the following considerations: (1) there are, inevitably, uncertainties with regard to any projection, (2) NRS have indicated that the principal projection is what they consider the most likely scenario for Glasgow's population and (3) it improves consistency with other documents (e.g. the Glasgow and the Clyde Valley Housing Need and Demand Assessment) which are based on the NRS principal projections. The text of this paper includes, for Glasgow City, some comparisons of the NRS principal projection results with the NRS low migration variant results.
- 3.5 Appendix B contains a set of summary and detailed Tables with population and household estimates and the projection results.

4 PROJECTION RESULTS

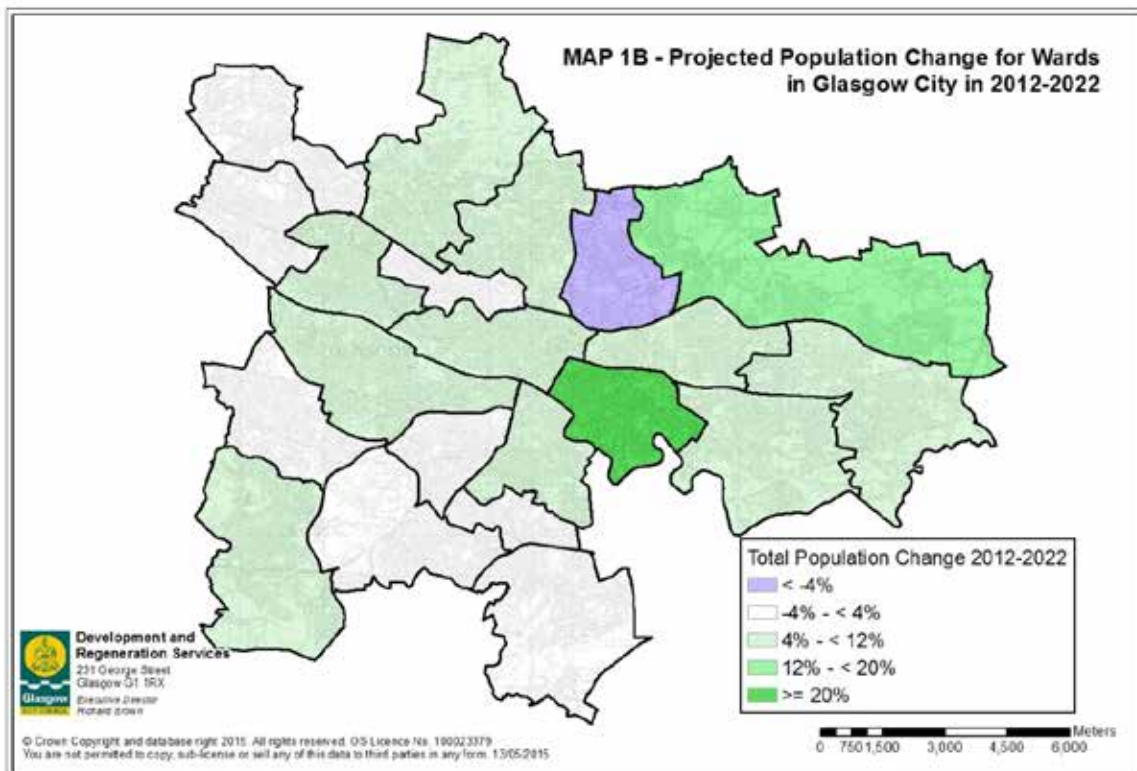
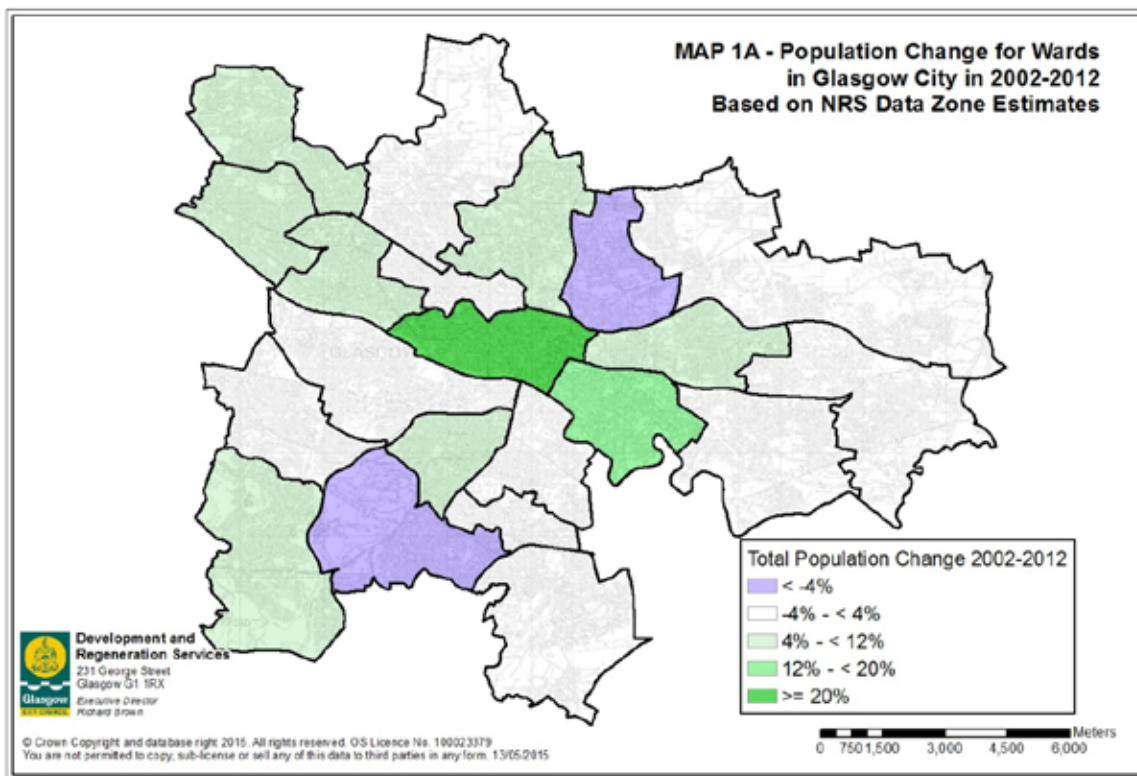
- 4.1 In this chapter the changes in Glasgow's population are discussed via a commentary on some Tables and a series of Maps. Figures quoted in the text have been rounded to the nearest 50. For the purpose of comparison, the "A" maps show the changes for the recent period, 2002 to 2012, and the "B" maps for the projection period, 2012 to 2022. In the maps green is used to show increases and purple is used to show reductions.
- 4.2 Glasgow's population is projected to grow by 3,450 per year according to the NRS principal projection (see Table 1), which is considerably higher than in the recent decade (1,850 per year in 2002-2012). It should be noted that net migration is projected to be similar in the two periods (at about 1,700 to 1,750 per year). The difference is caused by a higher natural population change in the projection period (more births and fewer deaths).

Table 1 - Estimated and Projected Population Change Glasgow City

	estimates	principal projection	low migration variant
	2002 to 2012	2012 to 2022	2012 to 2022
population at start of period	576,450	595,080	595,080
population at end of period	595,080	629,696	619,022
total change	18,630	34,616	23,942
annual change	1,863	3,462	2,394
births	7,086	7,795	7,699
deaths	6,934	6,078	6,070
natural change	152	1,717	1,629
net migration/other changes	1,711	1,745	765

Source: National Records of Scotland - Crown Copyright Reserved

- 4.3 Under the NRS lower migration scenario, Glasgow's population is projected to grow by 2,400 per year, which is also above the 1,850 per year growth in 2002-2012. A lower net migration (at 750 per year, as compared with 1,700 per year in 2002-2012) is more than compensated for by a higher natural population change (at 1,650 per year, as compared with 150 per year in 2002-2012).
- 4.4 Maps 1A and 1B (see next page) show the estimated/projected population change for Glasgow's Wards in 2002 to 2012 and in 2012 to 2022. The most notable change is a concentration of population growth in the Wards Calton and North East in 2012-2022, as compared with a concentration of growth in the Ward Anderston/City in 2002-2012. The population of the Anderston/City Ward is projected to grow by 8% in 2012-2022, which is considerably below the 29% rate of growth in 2002-2012 (see Table 2).



- 4.5 The Springburn Ward shows the highest rate of population loss. But the rate of population change is expected to improve from -11% in 2002-2012 to -7% in 2012-2022.
- 4.6 The three Wards with the highest expected population growth in 2012-2022 are Calton (+27%), North East (+15%) and Canal (+11%).
- 4.7 For Maryhill/Kelvin, Shettleston and Baillieston there is a change from population decline in 2002-2012 to projected population growth in 2012-2022. Anderston/City, Partick West, Pollokshields and Greater Pollok show a lower rate of population growth in 2012-2022, as compared with the recent decade. Garscadden/Scotstounhill changes from population growth in 2002-2012 to a small population loss in 2012-2022.

Table 2 - Population for Multi-Member Wards in Glasgow City in 2002, 2012 and 2022

Multi Member Ward	2002	2012	2022	% change 2002-2012	% change 2012-2022
Linn	28,832	28,913	29,535	0%	2%
Newlands/Auldburn	24,219	23,189	23,566	-4%	2%
Greater Pollok	29,727	33,056	35,337	11%	7%
Craigton	30,566	29,626	30,150	-3%	2%
Govan	30,474	30,988	33,016	2%	7%
Pollokshields	20,905	22,571	23,089	8%	2%
Langside	22,716	23,103	23,092	2%	0%
Southside Central	28,210	28,770	30,937	2%	8%
Calton	21,165	24,746	31,510	17%	27%
Anderston/City	22,637	29,177	31,606	29%	8%
Hillhead	25,910	26,703	27,285	3%	2%
Partick West	29,817	33,310	35,064	12%	5%
Garscadden/Scotstounhill	28,559	29,707	29,569	4%	0%
Drumchapel/Anniesland	27,707	28,862	29,741	4%	3%
Maryhill/Kelvin	27,825	27,086	28,678	-3%	6%
Canal	30,486	32,107	35,525	5%	11%
Springburn	24,176	21,407	19,882	-11%	-7%
East Centre	28,736	29,992	31,840	4%	6%
Shettleston	26,714	25,651	26,864	-4%	5%
Baillieston	33,143	32,614	34,729	-2%	6%
North East	33,926	33,502	38,681	-1%	15%
Glasgow City	576,450	595,080	629,696	3%	6%

Source:

Population estimates for data zones from National Records of Scotland (NRS)

CROWN COPYRIGHT RESERVED

The ward estimates are based on 2002 and 2012 population estimates for data zones

2022 population figures are from projections for Wards by Glasgow City Council - DRS

The 2022 projections have been constrained to

the NRS 2012-base principal population projection for Glasgow City

Population Change by Age

- 4.8 Table 3 shows that there are considerable differences in the population change by age between the projection period and the recent decade (see commentary in following sections). Maps 3A/B to 5A/B show the population changes for children (age 0 to 15), non-elderly adults (age 16 to 64) and elderly (age 65+).

Table 3 - Estimated/Projected Population Change by Age in Glasgow City			
	estimates	principal projection	low migration variant
	2002 to 2012	2012 to 2022	2012 to 2022
	annual change	annual change	annual change
0 to 4	338	431	324
5 to 11	-752	918	850
12 to 15	-437	-31	-54
children	-851	1,318	1,120
16 to 29	1,974	-2,072	-2,447
30 to 44	-691	2,784	2,417
45 to 64	2,093	679	577
adults (non elderly)	3,376	1,391	547
65 to 74	-632	652	637
75 to 84	-123	-136	-144
85 and over	93	237	234
elderly	-662	753	727
total population	1,863	3,462	2,394
Source: National Records of Scotland - Crown Copyright Reserved			

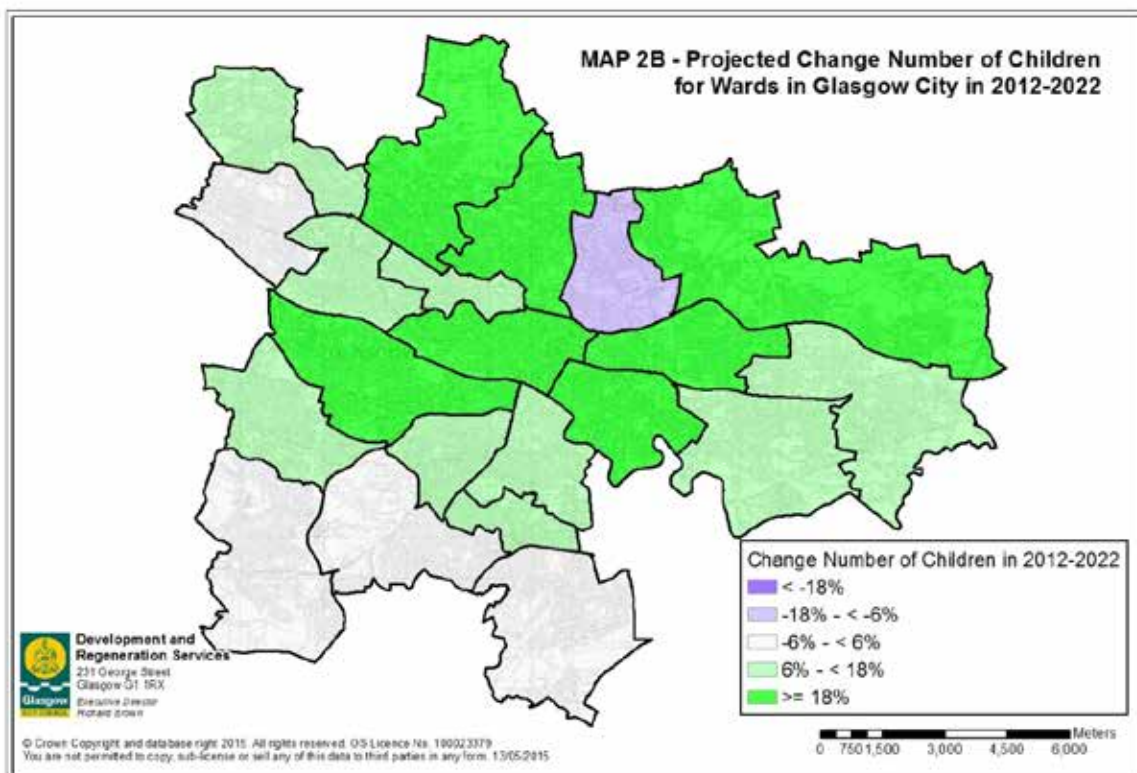
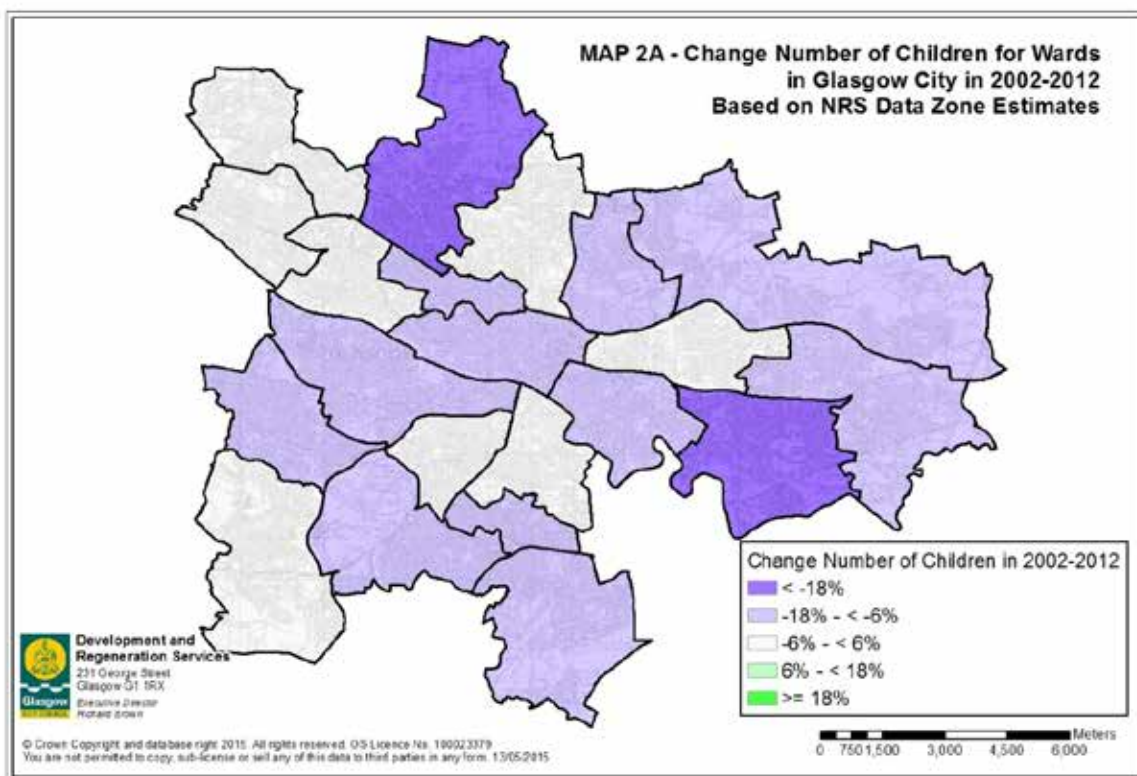
- 4.9 Relative to the NRS principal projection, the NRS lower migration scenario shows a lower growth for the number of children (+1,100 per year, as compared with +1,300 per year) and for the number of non-elderly adults (+550 per year, as compared with +1,400 per year). There is almost no impact on the projected rate of growth for the number of elderly (see Table 3).

Number of Children (age 0-15)

- 4.10 The number of children fell by 850 per year in 2002-2012 but is expected to rise by 1,300 per year in 2012-2022 (see Table 3). This is reflected in the maps: map 2A is dominated by the purple colour and map 2B by the green colour.

- 4.11 The six Wards with the highest rates of reduction in the number of children in 2002-2012 are: Shettleston (-21%), Maryhill/Kelvin (-18%), Baillieston (-15%), North East (-14%), Govan (-14%) and Springburn (-13%, see Map 2A and Table 4).
- 4.12 There was a small rise in the number of children in 2002-2012 in the Wards Greater Pollok, Pollokshields and Garscadden/Scotstounhill.
- 4.13 The projected rise in the number of children during 2012-2022 (see Map 2B and Table 4) is concentrated in the following Wards: Calton (+49%) and Anderston/City (+32%) in the City Centre; Canal (+27%), Maryhill/Kelvin (+19%) and Partick West (+15%) in the North West; East Centre (+28%) and North East (+19%) in the North East and Govan (+22%), Langside (+18%) and Southside Central (+16%) in the South.
- 4.14 The projected change in the number of children is similar to the recent change for Garscadden/Scotstounhill (+2%, compared with +1% in 2002-2012) and Greater Pollok (+3%, compared with +2% in 2002-2012).

Table 4 - Number of Children for Wards in Glasgow City in 2002, 2012 and 2022					
Multi Member Ward	2002	2012	2022	% change 2002-2012	% change 2012-2022
Linn	6,060	5,513	5,621	-9%	2%
Newlands/Auldburn	4,658	4,151	4,311	-11%	4%
Greater Pollok	6,791	6,925	7,163	2%	3%
Craigton	6,120	5,631	6,189	-8%	10%
Govan	5,275	4,562	5,588	-14%	22%
Pollokshields	4,028	4,078	4,423	1%	8%
Langside	3,247	2,937	3,455	-10%	18%
Southside Central	4,849	4,734	5,512	-2%	16%
Calton	3,668	3,391	5,042	-8%	49%
Anderston/City	2,113	1,891	2,500	-11%	32%
Hillhead	3,017	2,750	3,106	-9%	13%
Partick West	4,116	4,119	4,754	0%	15%
Garscadden/Scotstounhill	5,438	5,499	5,629	1%	2%
Drumchapel/Anniesland	5,819	5,605	6,348	-4%	13%
Maryhill/Kelvin	5,062	4,148	4,925	-18%	19%
Canal	5,123	5,020	6,357	-2%	27%
Springburn	4,828	4,192	3,908	-13%	-7%
East Centre	4,456	4,265	5,459	-4%	28%
Shettleston	5,033	3,986	4,522	-21%	13%
Baillieston	7,107	6,015	6,487	-15%	8%
North East	7,969	6,851	8,149	-14%	19%
Glasgow City	104,777	96,263	109,448	-8%	14%
Sources : see under Table 2					



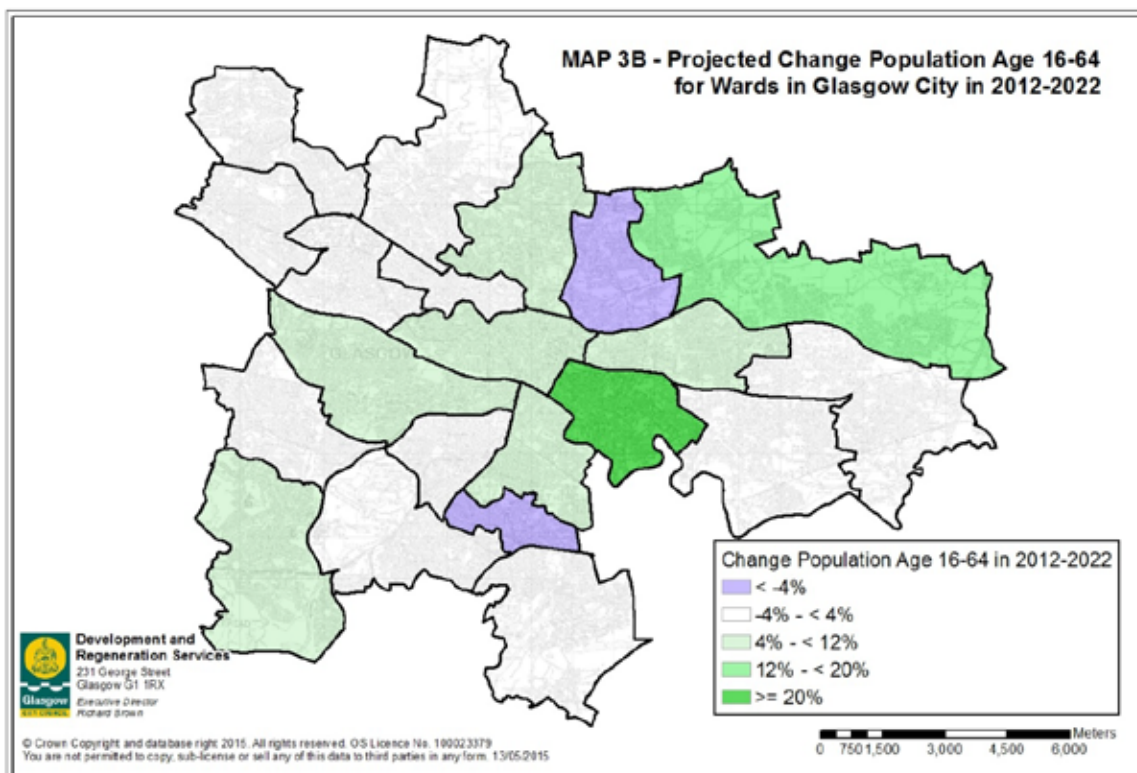
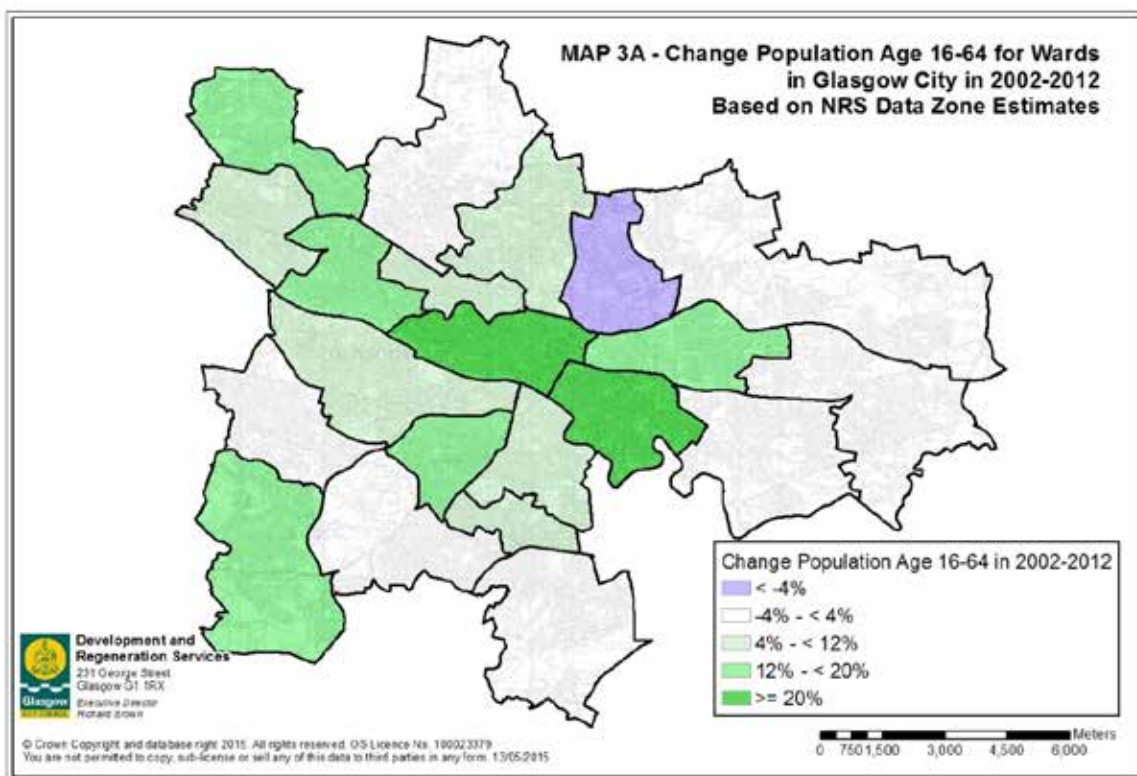
Number of non-elderly Adults (age 16-64)

- 4.15 The number of non-elderly adults (or adults of working age, approximated by the age-group 16-64) is projected to grow in 2012-2022 by only 1,400 per year, compared with a growth of 3,400 per year in 2002-2012. The main reason is the change for the age-group 16-29: from a rise of 1,950 per year in 2002-2012 to a fall of 2,050 per year in 2012-2022 (see Table 3).
- 4.16 The projected lower rate of growth is mainly affecting the Wards Anderston/City (from +40% in 2002-2012 to +9% in 2012-2022), Partick West (from +17% to +1%), Garscadden/Scotstounhill (from +11% to -2%), Drumchapel/Anniesland (from +12% to 0%), Pollokshields (from +13% to -3%) and Langside (from +6% to -6%, see Maps 3A and 3B and Table 5).
- 4.17 Compared to 2002-2012, there is considerably higher growth projected for non-elderly adults in North East (from +3% to +13%).
- 4.18 In Springburn and in Langside the number of non-elderly adults is projected to decline by around 6%.

Table 5 - Population Age 16-64 for Wards in Glasgow City in 2002, 2012 and 2022

Multi Member Ward	2002	2012	2022	% change 2002-2012	% change 2012-2022
Linn	18,863	19,196	18,627	2%	-3%
Newlands/Auldburn	15,174	15,026	14,965	-1%	0%
Greater Pollok	19,189	22,003	23,035	15%	5%
Craigton	18,444	18,737	18,575	2%	-1%
Govan	19,997	22,169	23,062	11%	4%
Pollokshields	13,999	15,779	15,330	13%	-3%
Langside	16,332	17,291	16,224	6%	-6%
Southside Central	18,883	20,210	21,679	7%	7%
Calton	14,070	18,286	23,095	30%	26%
Anderston/City	18,003	25,230	27,478	40%	9%
Hillhead	20,080	21,303	21,322	6%	0%
Partick West	21,286	24,924	25,281	17%	1%
Garscadden/Scotstounhill	17,452	19,353	18,974	11%	-2%
Drumchapel/Anniesland	17,102	19,168	19,081	12%	0%
Maryhill/Kelvin	18,491	18,822	18,992	2%	1%
Canal	20,347	22,400	24,397	10%	9%
Springburn	15,838	14,260	13,367	-10%	-6%
East Centre	18,536	20,833	21,721	12%	4%
Shettleston	16,938	17,026	17,176	1%	1%
Baillieston	21,401	21,504	22,163	0%	3%
North East	21,667	22,339	25,220	3%	13%
Glasgow City	382,092	415,859	429,764	9%	3%

Sources : see under Table 2

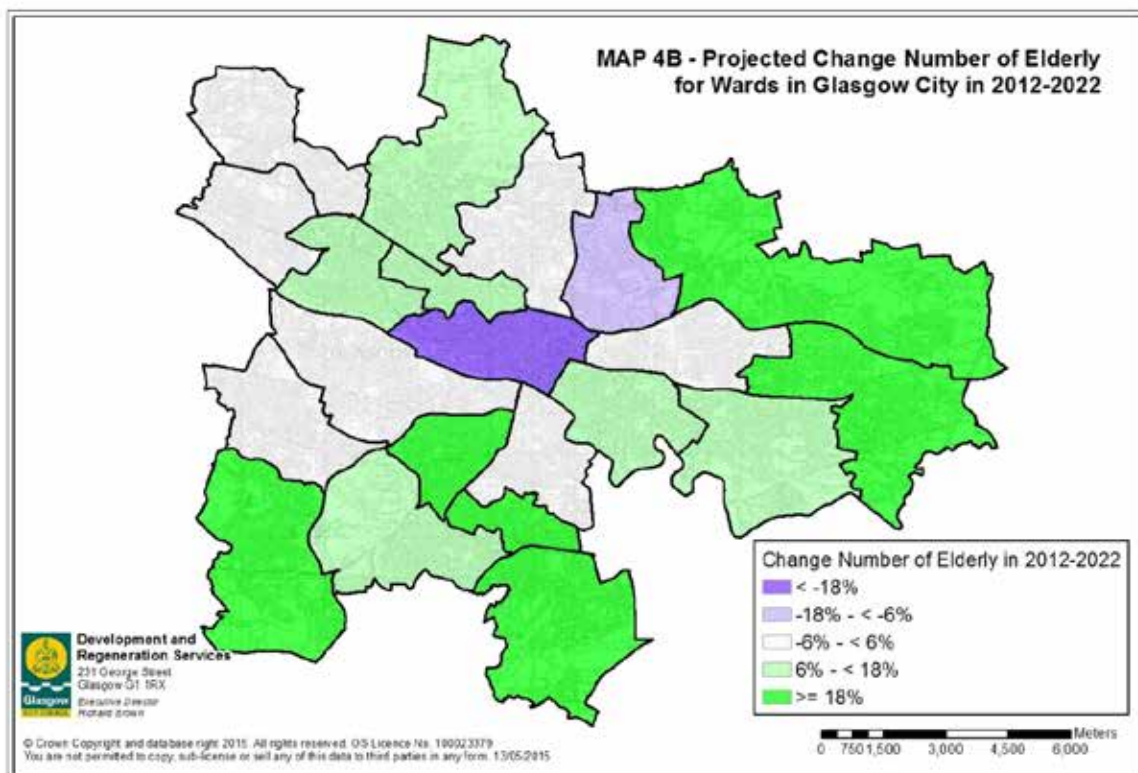
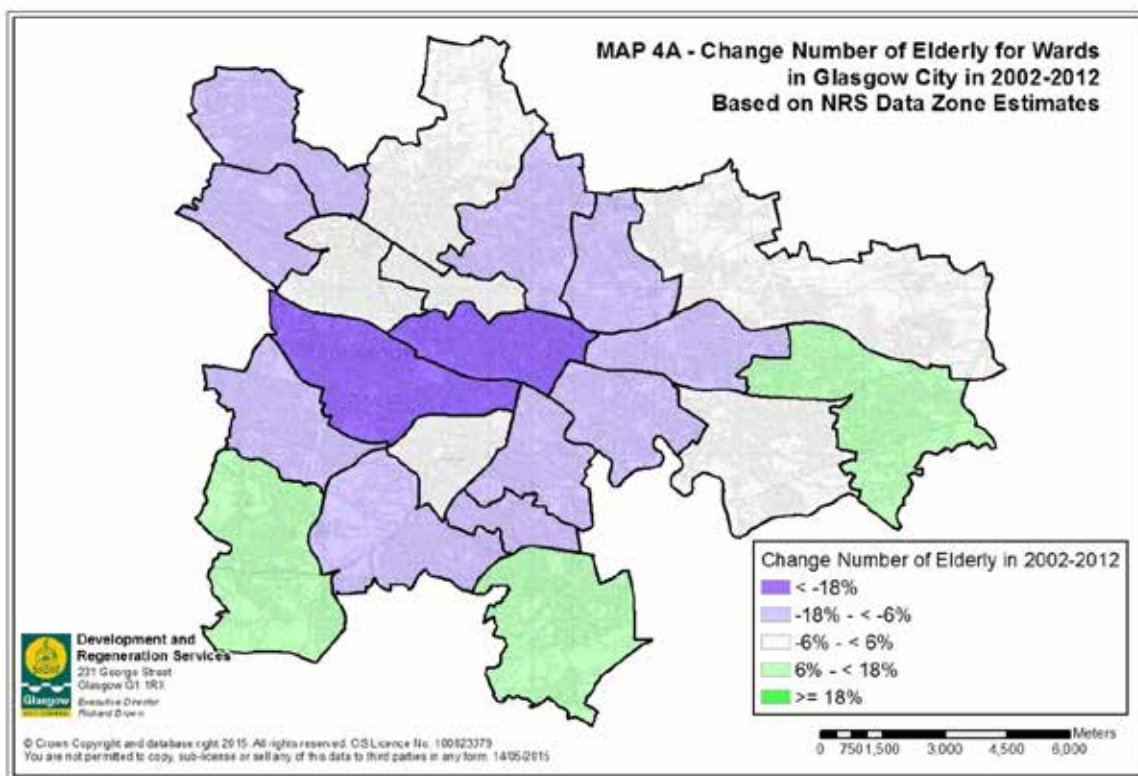


Number of Elderly (age 65+)

- 4.19 The number of elderly fell by 650 per year in 2002-2012 but is expected to rise by 750 per year in 2012-2022 (see Table 3). This is similar to the situation with the number of children. Again, this is reflected in the maps: map 4A is dominated by the purple colour and map 4B by the green colour.
- 4.20 The two Wards with the highest rates of reduction in the number of elderly in 2002-2012 are Anderston/City and Govan (both at a rate of -18%).
- 4.21 The number of elderly rose significantly in 2002-2012 in the Wards Greater Pollok (+10%), Linn (+8%) and Baillieston (+10%).
- 4.22 The projected rise in the number of elderly during 2012-2022 (see Table 6 and Map 4B on next page) is concentrated in Greater Pollok (+24%), Pollokshields (+23%), Langside (+19%) and Linn (+26%), in Glasgow South, and in North East (+23%), Baillieston (+19%), Partick West (+18%) and Maryhill/Kelvin (+16%), in Glasgow North.
- 4.23 Continuing reductions in the number of elderly are expected in the projection period 2012-2022 for Anderston/City (-21%), Springburn (-12%), East Centre (-5%) and Southside Central (-2%).

Table 6 - Number of Elderly for Wards in Glasgow City in 2002, 2012 and 2022

Multi Member Ward	2002	2012	2022	% change 2002-2012	% change 2012-2022
Linn	3,909	4,204	5,287	8%	26%
Newlands/Auldburn	4,387	4,012	4,290	-9%	7%
Greater Pollok	3,747	4,128	5,139	10%	24%
Craigton	6,002	5,258	5,386	-12%	2%
Govan	5,202	4,257	4,366	-18%	3%
Pollokshields	2,878	2,714	3,336	-6%	23%
Langside	3,137	2,875	3,413	-8%	19%
Southside Central	4,478	3,826	3,746	-15%	-2%
Calton	3,427	3,069	3,373	-10%	10%
Anderston/City	2,521	2,056	1,628	-18%	-21%
Hillhead	2,813	2,650	2,857	-6%	8%
Partick West	4,415	4,267	5,029	-3%	18%
Garscadden/Scotstounhill	5,669	4,855	4,966	-14%	2%
Drumchapel/Anniesland	4,786	4,089	4,312	-15%	5%
Maryhill/Kelvin	4,272	4,116	4,761	-4%	16%
Canal	5,016	4,687	4,771	-7%	2%
Springburn	3,510	2,955	2,607	-16%	-12%
East Centre	5,744	4,894	4,660	-15%	-5%
Shettleston	4,743	4,639	5,166	-2%	11%
Baillieston	4,635	5,095	6,079	10%	19%
North East	4,290	4,312	5,312	1%	23%
Glasgow City	89,581	82,958	90,484	-7%	9%
Sources : see under Table 2					



Number of Households

- 4.24 The number of households rose by 1,300 per year in 2002-2012 and is expected to rise by 2,600 per year in 2012-2022 (see Table 7). This is reflected in the maps: map 5B contains more green than map 5A.
- 4.25 The higher rate of household growth is partly due to a higher rate of population growth (3,450 per year in 2012-2022, compared with 1,850 per year in 2002-2012) and partly due to an assumed higher rate of household formation. In the recent decade the average household size in Glasgow fell by 0.043 (from 2.067 in 2002 to 2.024 in 2012). The average household size is projected to fall by 0.062 in the projection period (from 2.024 in 2012 to 1.961 in 2022, see Appendix B, detailed Table for Glasgow City).

Table 7 - Number of Households for Wards in Glasgow City in 2002, 2012 and 2022

Multi Member Ward	2002	2012	2022	% change 2002-2012	% change 2012-2022
Linn	12,659	12,947	13,831	2%	7%
Newlands/Auldburn	11,055	10,777	11,278	-3%	5%
Greater Pollok	12,423	13,560	15,185	9%	12%
Craigton	13,524	13,205	13,648	-2%	3%
Govan	15,662	16,273	17,879	4%	10%
Pollokshields	9,036	9,772	10,476	8%	7%
Langside	12,179	12,548	13,001	3%	4%
Southside Central	14,989	15,037	16,652	0%	11%
Calton	10,729	13,029	16,835	21%	29%
Anderston/City	10,925	14,410	16,223	32%	13%
Hillhead	12,931	13,235	13,942	2%	5%
Partick West	15,666	17,955	19,541	15%	9%
Garscadden/Scotstounhill	13,692	14,000	14,372	2%	3%
Drumchapel/Anniesland	13,103	13,676	14,459	4%	6%
Maryhill/Kelvin	13,207	13,259	14,352	0%	8%
Canal	14,772	15,618	17,517	6%	12%
Springburn	12,526	10,756	10,397	-14%	-3%
East Centre	13,927	15,006	16,196	8%	8%
Shettleston	12,424	12,711	13,674	2%	8%
Baillieston	13,634	14,173	15,671	4%	11%
North East	13,995	14,187	16,979	1%	20%
Glasgow City	273,058	286,134	312,107	5%	9%

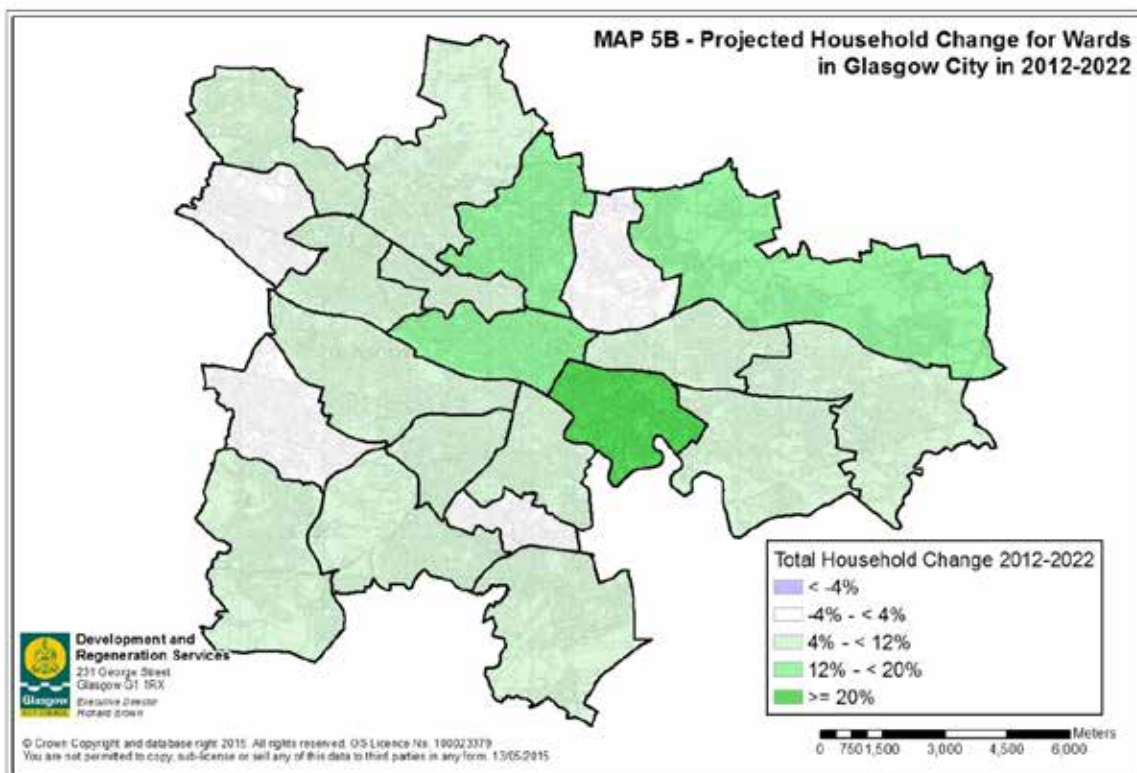
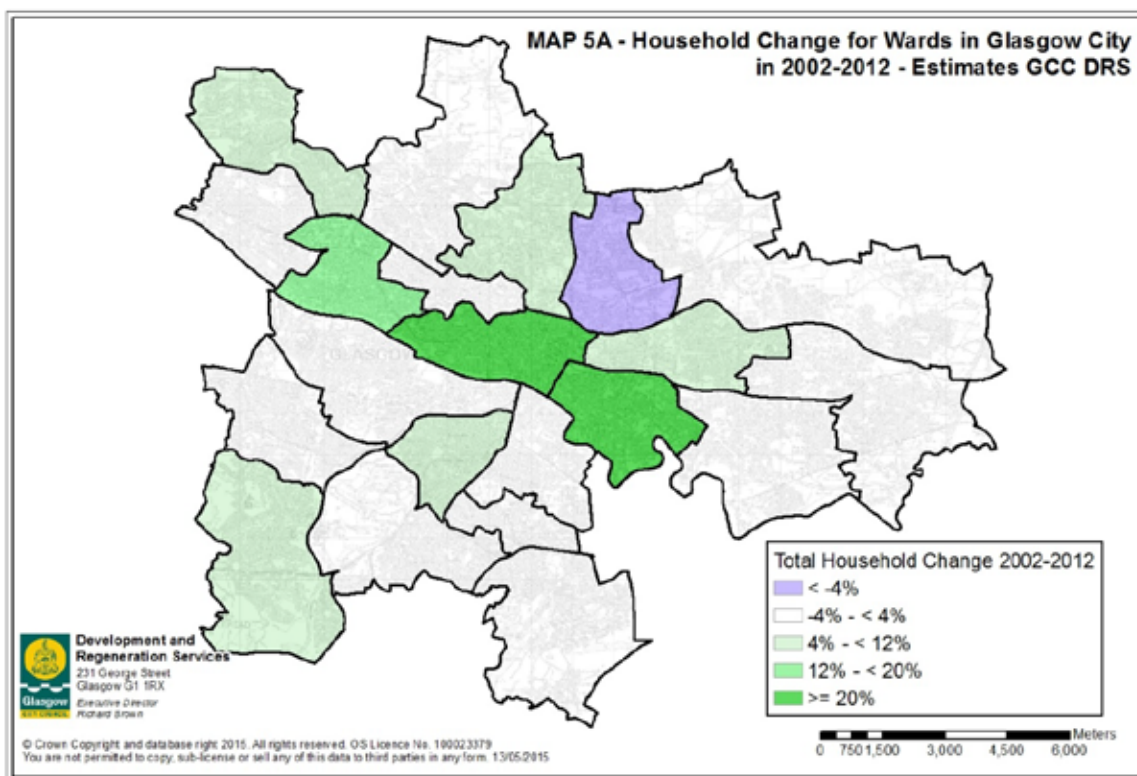
Source:

2002 and 2012 household estimates for Wards from Glasgow City Council - DRS

The household estimates for Wards have been constrained to
the NRS 2002 and 2012 household estimates for Glasgow City

2022 household figures are from projections for Wards by Glasgow City Council - DRS

The 2022 projections have been constrained to
the NRS 2012-base principal household projection for Glasgow City



- 4.26 A comparison between Maps 1A and 1B and Maps 5A and 5B shows that there is a correspondence between changes in the pattern of population and household change. For example in North East the projected **household** growth (at +20% between 2012 and 2022) is considerably above the recent household growth (at +1% between 2002 and 2012). Correspondingly, the projected **population** change (at 15% between 2012 and 2022) is considerably above the recent population change (at -1% between 2002 and 2012).

Household Change by Type

- 4.27 The higher rate of growth in the number of households for Glasgow (2,600 per year in 2012-2022, as compared with 1,300 per year in 2002-2012) is accounted for by the growth in family households (900 per year in 2012-2022, as compared with -450 per year in 2002-2012, see Table 8).

Table 8 - Number of Households by Type in Glasgow City in 2002, 2012 and 2022					
Household Type	2002	2012	2022	annual change 2002-2012	annual change 2012-2022
1 adult	114,777	126,538	141,464	1,176	1,493
2 adults	65,815	71,124	73,695	531	257
3+ adults	23,019	23,299	22,848	28	-45
1 adult families	24,906	24,525	28,983	-38	446
2+ adults families	44,541	40,648	45,117	-389	447
Total households	273,058	286,134	312,107	1,308	2,597
1 adult	42.0%	44.2%	45.3%		
2 adults	24.1%	24.9%	23.6%		
3+ adults	8.4%	8.1%	7.3%		
1 adult families	9.1%	8.6%	9.3%		
2+ adults families	16.3%	14.2%	14.5%		
Total households	100.0%	100.0%	100.0%		
Source:					
GCC-DRS based on NRS headship rates for Glasgow City with adjustment for 2022					

Appendix A – Description of Methodology

- A1 The projections for Glasgow's Multi Member Wards (MMWs) have been prepared by DRS using the cohort component methodology. This is the same methodology as NRS use for their sub-national population projections. The method projects future population levels by estimating the components of change, i.e. the numbers of births and deaths, and the in and out migration flows, for each of the years in the projection period. On a year by year basis, the population at the start of the annual period is "aged" by one year, these components of change are added or subtracted and this gives the population at the end of the annual period. The annual period refers to the twelve months from the mid-year position of one year to the mid-year position of the following year.
- A2 The numbers of births have been calculated by multiplying fertility rates by age of mother to the number of females aged 15 to 46 at the start of the annual period. The fertility rates used were the "assumed mid-year to mid-year fertility rates per 1,000 females at each age" for the years 2012/13 to 2021/22, from the ONS 2012-base principal population projection for Scotland. The fertility rates have been adjusted by local multiplication factors (see Table A1), which reflect actual births, during the five-year period 2007-12, divided by projected births, for that period, using Scotland-wide fertility rates.

Table A1 - Multiplication factors used for fertility and mortality rates							
Ward	fertility	mortality			mortality		
	females	males	males	males	females	females	females
	age 15-46	age 0-59	age 60-79	age 80+	age 0-59	age 60-79	age 80+
Linn	0.985	1.421	1.462	1.114	1.382	1.327	1.060
Newlands/Auldburn	1.090	1.302	1.339	1.020	1.217	1.169	0.934
Greater Pollok	1.135	1.507	1.550	1.181	1.442	1.385	1.106
Craigton	1.017	1.313	1.351	1.029	1.328	1.276	1.019
Govan	0.933	1.807	1.859	1.416	1.644	1.579	1.261
Pollokshields	1.064	1.078	1.109	0.845	1.183	1.136	0.907
Langside	0.691	1.313	1.350	1.029	1.058	1.016	0.812
Southside Central	1.078	1.609	1.656	1.261	1.295	1.243	0.993
Calton	0.782	1.956	2.012	1.533	1.534	1.474	1.177
Anderston/City	0.393	1.639	1.686	1.284	1.351	1.298	1.037
Hillhead	0.484	1.248	1.284	0.978	1.218	1.170	0.935
Partick West	0.602	1.179	1.213	0.924	1.174	1.128	0.901
Garscadden/Scotstounhill	1.084	1.489	1.532	1.167	1.458	1.401	1.119
Drumchapel/Anniesland	0.985	1.563	1.608	1.225	1.617	1.553	1.241
Maryhill/Kelvin	0.839	1.454	1.496	1.139	1.365	1.312	1.048
Canal	0.824	1.781	1.833	1.396	1.655	1.590	1.270
Springburn	1.224	1.785	1.837	1.399	1.649	1.584	1.265
East Centre	0.839	1.656	1.704	1.298	1.440	1.383	1.105
Shettleston	0.927	1.394	1.434	1.092	1.385	1.331	1.063
Baillieston	0.943	1.284	1.321	1.006	1.226	1.177	0.941
North East	1.075	1.570	1.615	1.231	1.433	1.377	1.100
Glasgow City	0.874	1.493	1.536	1.170	1.392	1.337	1.068

Source: GCC - DRS. Figures were constrained to NRS Adjustment Factors in 2012-base projections for Glasgow City

- A3 The numbers of deaths have been calculated by multiplying mortality rates by sex and by age to the number of males and females at the start of the annual period. The mortality rates used were the “assumed mid-year to mid-year mortality rates from birth or from age x last birthday” for males and females, by single age, for the years 2012/13 to 2021/22, from the ONS 2012-base principal population projection for Scotland. The mortality rates have been adjusted by local multiplication factors (by sex and for three age groups, see Table A1), which reflect actual deaths, during the five-year period 2007-12, divided by projected deaths, for that period, using Scotland-wide mortality rates.
- A4 Expected future migration flows, i.e. the numbers of people moving into and out of the areas, are of crucial importance for projected levels of future population. Similar to NRS in their projections by Council area, DRS have assumed that the pattern of net migration in the previous five years (i.e. net migration in the years 2007-12 for the 2012-base projections) will continue in the projection period (i.e. the years 2012 to 2022). The net migration for Glasgow was 3,769 per year in 2007-12. For the projection period, 2012-22, this was scaled down to 1,745 per year (see Table A2), which is the assumed annual net migration for Glasgow City in the NRS principal projection.

Table A2 - Projected Annual Net Migration before and after Dwelling Change Adjustment							
Ward	estimate	projected net migration 2012-22			projected changes 2012-22		
	2007-12	initial	adjustment	final	household	dwelling	difference
Linn	21	-62	79	17	316	710	394
Newlands/Auldburn	-134	-217	215	-2	-664	413	1,077
Greater Pollok	127	29	60	89	1,140	1,438	298
Craigton	-78	-148	173	25	-542	324	866
Govan	311	110	15	125	1,273	1,350	77
Pollokshields	180	45	-169	-124	1,316	470	-846
Langside	68	-62	-30	-92	417	267	-150
Southside Central	86	-80	119	39	754	1,350	596
Calton	579	515	47	562	3,324	3,561	237
Anderston/City	807	758	-653	105	5,090	1,827	-3,263
Hillhead	311	270	-328	-58	2,170	528	-1,642
Partick West	566	479	-385	94	3,345	1,419	-1,926
Garscadden/Scotstounhill	222	116	-140	-24	833	134	-699
Drumchapel/Annie'sland	194	95	-75	20	952	575	-377
Maryhill/Kelvin	82	44	79	123	498	894	396
Canal	297	254	34	288	1,485	1,655	170
Springburn	-272	-355	77	-278	-909	-526	383
East Centre	352	146	9	155	920	965	45
Shettleston	32	-51	193	142	-167	796	963
Baillieston	-53	-127	297	170	-47	1,439	1,486
North East	71	-14	383	369	823	2,736	1,913
Glasgow City	3,769	1,745	0	1,745	22,325	22,325	0

Source: GCC - DRS. Migration estimates were derived from NRS estimates of population, births and deaths by Data Zone.

- A5 The initial annual net migration figures for 2012-22 (see Table A2) have been calculated by allocating the difference ($2,024 = 3,769 - 1,745$) to the MMWs, based on in-migration figures for 2010-11 from the 2011 Census. For the MMWs with a population of over 3,000 students in 2011 (Calton, Anderston/City, Hillhead, Partick West, Maryhill/Kelvin and Canal), it has been assumed that the net migration for the age group 15 to 19 in 2007-12 will continue at that level in 2012-22. This is justified on the basis that student numbers are not expected to decline over the coming decade. The inevitable implication of this has been that migration numbers for the other MMWs have had to be reduced at a higher rate, in order to obtain the NRS annual net migration figure of 1,745 for the City.
- A6 **In migration** figures for the MMWs have been based on 2011 Census figures for the inflows by age/sex, supplied by NRS (via NOMIS). The in migration reflects the inflows into the MMW from Rest of City, Rest of UK and Overseas. The **net migration** was estimated from the population change during 2007 to 2012. Assuming that 2011 Census in migration figures for 2010-11 are similar to the level of in migration for the years 2007 to 2012, an estimate of annual **out migration** for 2007-12 can be obtained via subtraction of the net migration from the in migration figures.
- A7 In migration levels have been assumed constant over the projection period (i.e. at 2010-11 levels). Out migration levels have been set based on projected net migration for Glasgow City by sex and age band (from the NRS principal projection). This means that, for individual MMWs, projected out migration levels are based on the estimated annual levels in 2007-12, but adjusted so that the values are consistent with the projected net migration figures for Glasgow City, as assumed for the NRS principal projection.
- A8 The assumption that net migration in the future will be similar to patterns in the recent past is a reasonable approach to take for Council area projections. But it can be less appropriate for small(er) area projections. For example, the Partick West MMW has seen sizable numbers of housing completions during 2007 to 2012 (amongst others in Glasgow Harbour), but a slowdown of housing development in the area gives rise to the expectation that future migration flows will be lower than in recent years.
- A9 Based on past net migration levels (see Table A2, initial net migration 2012-22) a set of household projections was calculated and these were compared with projected dwelling change (see last 3 columns of Table A2). This resulted in an adjustment of the migration assumptions. This adjustment equals the difference between projected dwelling change and initial projected household change, divided by five. The difference is converted to an annual difference via a division by ten (the 10-year period 2012 to 2022) and is multiplied by two (approximate average household size) to convert a **dwelling** change to a **population** change. As a result of this adjustment, projected household change reflects the pattern of projected dwelling change in the final set of projections for 2012 to 2022.

Table A3 - Estimated and Projected Dwelling Stock Change							
Ward	estimated and projected dwelling stock				estimated/projected changes		
	2002	2012	2014	2022	2002-12	2012-14	2014-22
Linn	13,244	13,178	13,186	13,888	-66	8	702
Newlands/Auldburn	11,240	11,408	11,210	11,821	168	-198	611
Greater Pollok	13,022	13,795	14,012	15,233	773	217	1,221
Craigton	13,899	13,698	13,698	14,022	-201	0	324
Govan	16,771	17,057	16,997	18,407	286	-60	1,410
Pollokshields	9,228	10,084	10,090	10,554	856	6	464
Langside	12,380	12,865	13,005	13,132	485	140	127
Southside Central	16,191	16,233	15,963	17,583	42	-270	1,620
Calton	12,421	13,771	13,608	17,332	1,350	-163	3,724
Anderston/City	11,303	15,049	15,233	16,876	3,746	184	1,643
Hillhead	13,249	13,692	13,794	14,220	443	102	426
Partick West	16,277	18,415	18,419	19,834	2,138	4	1,415
Garscadden/Scotstounhill	14,026	14,533	14,329	14,667	507	-204	338
Drumchapel/Anniesland	13,982	13,972	14,067	14,547	-10	95	480
Maryhill/Kelvin	13,829	13,646	13,690	14,540	-183	44	850
Canal	15,407	16,185	16,106	17,840	778	-79	1,734
Springburn	13,465	11,951	10,629	11,425	-1,514	-1,322	796
East Centre	14,802	15,603	15,734	16,568	801	131	834
Shettleston	12,876	13,006	13,096	13,802	130	90	706
Baillieston	13,714	14,595	14,633	16,034	881	38	1,401
North East	15,038	14,727	14,774	17,463	-311	47	2,689
Glasgow City	286,364	297,463	296,273	319,788	11,099	-1,190	23,515

Table A4 - Projected Changes in Dwelling Stock by Component in 2014-2022

Ward	dwelling	housing completions				demoli-	dwelling
	stock	private sector		social sector		tions	stock
	2014	2014-21	2021-22	2014-20	2020-22	2014-22	2022
Linn	13,186	332	23	260	87	0	13,888
Newlands/Auldburn	11,210	713	29	251	84	-466	11,821
Greater Pollok	14,012	750	10	346	115	0	15,233
Craigton	13,698	78	5	336	112	-207	14,022
Govan	16,997	404	235	578	193	0	18,407
Pollokshields	10,090	175	46	182	61	0	10,554
Langside	13,005	53	1	55	18	0	13,132
Southside Central	15,963	1,139	72	607	202	-400	17,583
Calton	13,608	1,839	219	1,258	419	-11	17,332
Anderston/City	15,233	546	392	529	176	0	16,876
Hillhead	13,794	346	7	55	18	0	14,220
Partick West	18,419	1,000	119	222	74	0	19,834
Garscadden/Scotstounhill	14,329	272	19	206	69	-228	14,667
Drumchapel/Anniesland	14,067	375	76	127	42	-140	14,547
Maryhill/Kelvin	13,690	542	21	247	82	-42	14,540
Canal	16,106	607	176	713	238	0	17,840
Springburn	10,629	460	28	598	199	-489	11,425
East Centre	15,734	424	59	263	88	0	16,568
Shettleston	13,096	39	19	486	162	0	13,802
Baillieston	14,633	1,023	86	219	73	0	16,034
North East	14,774	2,096	234	269	90	0	17,463
Glasgow City	296,273	13,213	1,876	7,807	2,602	-1,983	319,788

For a description of Data Sources see paragraphs A10 and A11 on next page.

- A10 Tables A3 and A4 give information on estimated and projected changes in numbers of dwellings. Estimated figures, for 2002, 2012 and 2014, are from the GCC-DRS Housing Stock database. For the projections, data was collected on projected dwelling stock by MMW, taking into account projected housing completions, as well as planned GHA demolitions.
- A11 Information on planned housing completions is available for the years 2014-21 from the established Housing Land Supply for the private sector. For the social rented sector, information on planned housing completions is available for the years 2014-20 from the Strategic Housing Investment Plan (the SHIP). In order to project the housing completions for the missing years of the projection period, some simple assumptions have had to be made. For the private sector, the projected housing completions for 2021-22 have been calculated as the post 2021 planned housing completions from the Urban Capacity study, scaled to 1,876, which is close to the annual number of private sector housing completions planned for 2014-21 at City-level. For the social rented sector, the projected housing completions for the two years 2020-22 have been assumed the same as in to the previous six years, 2014-20. In Table A4, the figures in the column for social sector completions in 2020-22 are one third of the figures for social sector completions in 2014-20.
- A12 These projections were done using the POPGROUP population and household projection software. However, it was not possible, with the migration controls in version 3.1 of the software, to project the population accurately for MMWs Anderston/City and Hillhead (these are MMWs with an unusual age profile due to a large student population). Therefore it was decided to do the projection for those MMWs in worksheets outside the main software. The results were brought into the software as constrained values.
- A13 Anderston/City and Hillhead are MMWs where the numbers of births have been increasing in recent years and where there has been a net outflow of families. Projected net migration for the age group 0-14 has been based on retention factors, estimated from 2007-12 data. This shows that, on a net basis, for an age-cohort born in a given year, only 58% of males and 49% of females are still in the Anderston/City MMW 14 years after birth. For the Hillhead MMW the retention figures are 64% for males and 56% for females.

A14 Households are projected based on the future population *in households*, i.e. the total population minus the number of people who live in communal establishments. Table A5 below gives estimated and projected communal establishment populations.

Table A5 - Estimated/Projected Population who live in Communal Establishments							
Ward	Census 2001	estimate 2002	Census 2011	estimate 2012	projection 2022	changes 2002-12	changes 2012-22
Linn	105	115	230	229	271	114	42
Newlands/Auldburn	111	104	80	82	89	-22	7
Greater Pollok	461	460	512	520	686	60	166
Craigton	253	243	233	230	249	-13	19
Govan	566	590	825	874	842	284	-32
Pollokshields	359	337	240	239	272	-98	33
Langside	157	145	85	91	83	-54	-8
Southside Central	88	110	315	343	327	233	-16
Calton	610	626	1,088	1,187	1,835	561	648
Anderston/City	3,146	3,222	4,885	5,341	5,725	2,119	384
Hillhead	636	628	559	599	687	-29	88
Partick West	522	509	127	133	143	-376	10
Garscadden/Scotstounhill	331	322	381	385	390	63	5
Drumchapel/Anniesland	169	169	243	241	245	72	4
Maryhill/Kelvin	926	954	1,169	1,239	1,151	285	-88
Canal	1,461	1,487	1,700	1,824	1,792	337	-32
Springburn	199	200	217	217	231	17	14
East Centre	900	935	1,301	1,470	1,531	535	61
Shettleston	350	328	251	250	288	-78	38
Baillieston	138	142	153	153	202	11	49
North East	407	410	400	402	491	-8	89
Glasgow City	11,895	12,036	14,994	16,049	17,530	4,013	1,481
Sources: 2001 and 2011 Census - Crown Copyright Reserved							
GCC - DRS for 2012 estimates (constrained to NRS figure for Glasgow of 16,049) and for 2022 projected values							

A15 According to the NRS projections, the communal establishment population is projected to reduce from 16,049 in 2012, to 15,228 in 2022. This projection is based on the assumption that the proportions of people (by sex and by age) who live in communal establishments are constant over the projection period.

A16 Student accommodation is classed as a communal establishment and is therefore not included in the dwelling figures. To incorporate the impact of current and planned development of student accommodation, it has been assumed that communal establishment proportions for young adults (age 15 to 29) will continue to rise in the projection period, at the rate of the period 2001 to 2012, in the MMWs Calton, Anderston/City and Hillhead. The figures in Table A5 show a projected rise in the communal establishment population to 17,530 in 2022.

- A17 Projections of the number of households are prepared by applying “number of households per population ratios” (“hh/pop ratio”, see Table A6) to the projected population in households (“pop in hhs”, see Table A6). The “number of households per population ratios” applied are the figures used by NRS for Glasgow City in the 2012-base household projections. Because of differences in household structures for the populations in the various MMWs, application of the City-wide rates to the population in households in 2012 gives figures which are different from the estimated number of households for these MMWs. The difference is reflected in the calibration factors (see Table A6).
- A18 Application of the 2012 calibration factors to the result of the multiplication “population in households” x “number of households per population ratios” for 2022 gives the initial household projections. The final household projections for 2022 (see Table A6) are the initial projections after calibration to the NRS City-wide projected household figure of 312,107.

Table A6 - Estimated/Projected Number of Households in 2012 and 2022							
Ward	pop in hhs						
	x hh/pop	household	calibration	x hh/pop	initial	final	
	ratio	estimate	factor	ratio	projection	projection	factor
	2012	2012	2012	2022	2022	2022	2022
Linn	14,213	12,947	0.911	15,279	13,918	13,831	0.905
Newlands/Auldburn	11,824	10,777	0.911	12,451	11,348	11,278	0.906
Greater Pollok	15,457	13,560	0.877	17,417	15,280	15,185	0.872
Craigton	14,771	13,205	0.894	15,363	13,734	13,648	0.888
Govan	15,373	16,273	1.059	16,996	17,990	17,879	1.052
Pollokshields	11,084	9,772	0.882	11,957	10,542	10,476	0.876
Langside	12,436	12,548	1.009	12,966	13,083	13,001	1.003
Southside Central	14,437	15,037	1.042	16,087	16,756	16,652	1.035
Calton	11,943	13,029	1.091	15,528	16,941	16,835	1.084
Anderston/City	12,156	14,410	1.185	13,771	16,325	16,223	1.178
Hillhead	12,876	13,235	1.028	13,649	14,029	13,942	1.021
Partick West	17,461	17,955	1.028	19,122	19,663	19,541	1.022
Garscadden/Scotstounhill	14,799	14,000	0.946	15,287	14,462	14,372	0.940
Drumchapel/Anniesland	14,015	13,676	0.976	14,911	14,550	14,459	0.970
Maryhill/Kelvin	13,346	13,259	0.993	14,537	14,442	14,352	0.987
Canal	15,204	15,618	1.027	17,159	17,627	17,517	1.021
Springburn	10,314	10,756	1.043	10,033	10,463	10,397	1.036
East Centre	14,740	15,006	1.018	16,008	16,298	16,196	1.012
Shettleston	13,293	12,711	0.956	14,389	13,759	13,673	0.950
Baillieston	16,242	14,173	0.873	18,071	15,769	15,671	0.867
North East	15,910	14,187	0.892	19,160	17,086	16,979	0.886
Glasgow City	291,893	286,134	0.980	320,143	314,064	312,107	0.975

Source: GCC - DRS, based on "headship rates" used by NRS in the 2012-base household projections for Glasgow City.

- A19 Between 2002 and 2012 the number of children in households reduced by 8,492 (from 104,610 to 96,118) and the number of family households reduced by 4,274 (from 69,447 to 65,173). There was a small reduction in the average family size: from 1.506 to 1.475 children per family household.
- A20 The number of family households in 2022 from the NRS household projections (65,300) would imply larger families, i.e. the number of children per family household would go up to 1.673 ($= 109,277 / 65,300$). It is considered unlikely that a projected rise in the number of children of 13,159 (from 96,118 to 109,277), would result in an increase in the number of family households of only 127 (from 65,173 to 65,300). Instead, it appears more likely that the number of family households will rise to 74,100, which is the number of family households under the assumption of no-change in the average family size (i.e. number of children per family household).
- A21 The assumption of no-change in the average family size results in a 13.5% increase in the number of family households, relative to the projected number of family households for 2022 in the NRS projections (74,100 instead of 65,300). The adjustments have been made in Table A7 below. An upward adjustment in the number of single adult families leads to a corresponding downward adjustment in the number of single adult households. Similarly, an upward adjustment in the number of two+ adult families leads to a corresponding downward adjustment in the number of two adult households.

Table A7 - Number of Households by Type in Glasgow City in 2002, 2012 and 2022

Household Type	2002	2012	2022 initial	adjustment	2022 final	
1 adult	114,777	126,538	144,906	-3,442	141,464	
2 adults	65,815	71,124	79,053	-5,358	73,695	
3+ adults	23,019	23,299	22,848	0	22,848	
1 adult families	24,906	24,525	25,541	3,442	28,983	
2+ adults families	44,541	40,648	39,759	5,358	45,117	
Glasgow City	273,058	286,134	312,107	0	312,107	
Source:						
GCC-DRS based on NRS headship rates for Glasgow City with adjustment for 2022						

- A22 The breakdown of households by type for the Wards has been estimated using 2001 Census Table UV066 and 2011 Census Table QS115SC. Some approximation was necessary, as the household type classification in these Tables is not completely identical to the household type classification in the NRS household projections. Based on the information in these Tables, calibration factors by household type were estimated for the years 2001 and 2011. It was assumed that the calibration factors do not change after 2011.
- A23 The upward adjustment in the number of family households by Ward is dependent on the projected change in the number of children. Estimated and projected households by type are given in the detailed Tables of Appendix B.

Appendix B – Summary Tables and Detailed Tables

List of Summary Tables.

B1 – Population by Age for Multi-Member Wards in Glasgow City in 2002

B2 - Population by Age for Multi-Member Wards in Glasgow City in 2012

B3 – Projected Population by Age for Multi-Member Wards in Glasgow City in 2022

B4 – Estimated Population Change by Age for Multi-Member Wards in Glasgow City
in 2002 to 2012

B5 – Projected Population Change by Age for Multi-Member Wards in Glasgow City
in 2012 to 2022

Detailed Tables

The Appendix contains a set of Tables with Detail on Estimated/Projected Population and Household Change for Glasgow City and for each of the City's 21 Multi Member Wards.

Map Glasgow City Council Electoral Wards

Table B1 - Population by Age for Multi-Member Wards in Glasgow City in 2002

Multi Member Ward	0-4	5-11	12-15	children	16-29	30-44	45-64	age 16-64	65-74	75-84	85+	age 65+	Total
Linn	1,720	2,691	1,649	6,060	5,475	6,633	6,755	18,863	2,194	1,348	367	3,909	28,832
Newlands/Auldburn	1,384	1,993	1,281	4,658	3,978	5,263	5,933	15,174	2,368	1,486	533	4,387	24,219
Greater Pollok	1,928	3,099	1,764	6,791	5,275	7,546	6,368	19,189	2,366	1,030	351	3,747	29,727
Craigton	1,586	2,745	1,789	6,120	5,004	6,617	6,823	18,444	3,294	2,078	630	6,002	30,566
Govan	1,657	2,245	1,373	5,275	6,680	6,965	6,352	19,997	2,804	1,792	606	5,202	30,474
Pollokshields	1,371	1,694	963	4,028	4,407	5,423	4,169	13,999	1,426	1,042	410	2,878	20,905
Langside	1,042	1,363	842	3,247	5,459	6,513	4,360	16,332	1,567	1,207	363	3,137	22,716
Southside Central	1,632	2,007	1,210	4,849	5,838	7,163	5,882	18,883	2,508	1,501	469	4,478	28,210
Calton	1,048	1,557	1,063	3,668	4,754	4,678	4,638	14,070	2,113	1,035	279	3,427	21,165
Anderston/City	647	866	600	2,113	10,325	4,423	3,255	18,003	1,355	930	236	2,521	22,637
Hillhead	1,018	1,264	735	3,017	9,931	5,999	4,150	20,080	1,407	1,004	402	2,813	25,910
Partick West	1,248	1,809	1,059	4,116	7,607	7,570	6,109	21,286	2,251	1,654	510	4,415	29,817
Garscadden/Scotstounhill	1,666	2,391	1,381	5,438	4,733	6,554	6,165	17,452	2,913	2,140	616	5,669	28,559
Drumchapel/Anniesland	1,633	2,527	1,659	5,819	5,119	6,146	5,837	17,102	2,451	1,830	505	4,786	27,707
Maryhill/Kelvin	1,570	2,242	1,250	5,062	5,634	6,603	6,254	18,491	2,328	1,436	508	4,272	27,825
Canal	1,455	2,240	1,428	5,123	7,052	6,593	6,702	20,347	2,782	1,716	518	5,016	30,486
Springburn	1,546	2,071	1,211	4,828	4,902	6,289	4,647	15,838	2,082	1,118	310	3,510	24,176
East Centre	1,227	1,960	1,269	4,456	5,549	6,634	6,353	18,536	3,122	1,969	653	5,744	28,736
Shettleston	1,372	2,344	1,317	5,033	4,316	6,093	6,529	16,938	2,682	1,584	477	4,743	26,714
Baillieston	1,925	3,264	1,918	7,107	5,696	8,251	7,454	21,401	2,794	1,485	356	4,635	33,143
North East	2,233	3,584	2,152	7,969	6,230	8,427	7,010	21,667	2,626	1,278	386	4,290	33,926
Glasgow City	30,908	45,956	27,913	104,777	123,964	136,383	121,745	382,092	49,433	30,663	9,485	89,581	576,450

Source:

Population estimates for data zones from National Records of Scotland

CROWN COPYRIGHT RESERVED

The ward estimates are based on 2002 population estimates for data zones in Glasgow

Table B2 - Population by Age for Multi-Member Wards in Glasgow City in 2012

Multi Member Ward	0-4	5-11	12-15	children	16-29	30-44	45-64	age 16-64	65-74	75-84	85+	age 65+	Total
Linn	1,774	2,255	1,484	5,513	5,486	5,842	7,868	19,196	2,340	1,371	493	4,204	28,913
Newlands/Auldburn	1,414	1,712	1,025	4,151	4,176	4,571	6,279	15,026	2,048	1,451	513	4,012	23,189
Greater Pollok	2,204	2,885	1,836	6,925	6,413	6,838	8,752	22,003	2,227	1,494	407	4,128	33,056
Craigton	1,852	2,296	1,483	5,631	5,364	5,649	7,724	18,737	2,575	1,967	716	5,258	29,626
Govan	1,735	1,815	1,012	4,562	7,879	7,136	7,154	22,169	2,137	1,522	598	4,257	30,988
Pollokshields	1,539	1,653	886	4,078	4,932	5,738	5,109	15,779	1,368	949	397	2,714	22,571
Langside	1,232	1,114	591	2,937	5,047	6,870	5,374	17,291	1,442	1,027	406	2,875	23,103
Southside Central	1,916	1,796	1,022	4,734	6,479	7,340	6,391	20,210	2,062	1,355	409	3,826	28,770
Calton	1,292	1,244	855	3,391	7,557	5,318	5,411	18,286	1,665	1,121	283	3,069	24,746
Anderston/City	860	689	342	1,891	15,054	6,204	3,972	25,230	1,096	753	207	2,056	29,177
Hillhead	1,142	1,035	573	2,750	10,860	5,761	4,682	21,303	1,344	939	367	2,650	26,703
Partick West	1,504	1,622	993	4,119	9,029	8,041	7,854	24,924	2,164	1,465	638	4,267	33,310
Garscadden/Scotstounhill	1,895	2,232	1,372	5,499	5,462	6,327	7,564	19,353	2,270	1,805	780	4,855	29,707
Drumchapel/Anniesland	1,956	2,320	1,329	5,605	5,989	6,123	7,056	19,168	2,051	1,414	624	4,089	28,862
Maryhill/Kelvin	1,511	1,627	1,010	4,148	6,198	5,589	7,035	18,822	2,161	1,398	557	4,116	27,086
Canal	1,757	2,014	1,249	5,020	8,367	6,672	7,361	22,400	2,607	1,587	493	4,687	32,107
Springburn	1,637	1,636	919	4,192	4,486	4,947	4,827	14,260	1,555	1,088	312	2,955	21,407
East Centre	1,536	1,688	1,041	4,265	7,565	6,466	6,802	20,833	2,377	1,853	664	4,894	29,992
Shettleston	1,351	1,553	1,082	3,986	4,904	4,850	7,272	17,026	2,421	1,660	558	4,639	25,651
Baillieston	1,832	2,453	1,730	6,015	6,019	6,250	9,235	21,504	2,818	1,755	522	5,095	32,614
North East	2,346	2,797	1,708	6,851	6,439	6,943	8,957	22,339	2,383	1,463	466	4,312	33,502
Glasgow City	34,285	38,436	23,542	96,263	143,705	129,475	142,679	415,859	43,111	29,437	10,410	82,958	595,080

Source:

Population estimates for data zones from National Records of Scotland

CROWN COPYRIGHT RESERVED

The ward estimates are based on 2012 population estimates for data zones in Glasgow

Table B3 - Projected Population by Age for Multi-Member Wards in Glasgow City in 2022

Multi Member Ward	0-4	5-11	12-15	children	16-29	30-44	45-64	age 16-64	65-74	75-84	85+	age 65+	Total
Linn	1,767	2,476	1,378	5,621	4,466	6,232	7,929	18,627	3,108	1,572	607	5,287	29,535
Newlands/Auldburn	1,436	1,878	997	4,311	3,620	5,427	5,918	14,965	2,315	1,341	634	4,290	23,566
Greater Pollok	2,387	3,079	1,697	7,163	6,057	7,118	9,860	23,035	2,873	1,540	726	5,139	35,337
Craigton	1,949	2,730	1,510	6,189	4,479	6,456	7,640	18,575	2,794	1,711	881	5,386	30,150
Govan	2,162	2,418	1,008	5,588	5,926	9,493	7,643	23,062	2,416	1,310	640	4,366	33,016
Pollokshields	1,553	1,932	938	4,423	3,152	6,702	5,476	15,330	1,921	941	474	3,336	23,089
Langside	1,241	1,589	625	3,455	2,877	7,541	5,806	16,224	1,976	983	454	3,413	23,092
Southside Central	2,043	2,413	1,056	5,512	5,311	9,213	7,155	21,679	2,019	1,246	481	3,746	30,937
Calton	2,080	2,144	818	5,042	7,908	9,013	6,174	23,095	1,968	999	406	3,373	31,510
Anderston/City	1,165	934	401	2,500	14,454	9,191	3,833	27,478	968	497	163	1,628	31,606
Hillhead	1,294	1,259	553	3,106	9,887	7,194	4,241	21,322	1,574	905	378	2,857	27,285
Partick West	1,744	2,115	895	4,754	7,194	9,578	8,509	25,281	2,824	1,505	700	5,029	35,064
Garscadden/Scotstounhill	1,802	2,438	1,389	5,629	4,263	6,460	8,251	18,974	2,609	1,524	833	4,966	29,569
Drumchapel/Anniesland	2,026	2,830	1,492	6,348	4,335	7,208	7,538	19,081	2,378	1,326	608	4,312	29,741
Maryhill/Kelvin	1,789	2,203	933	4,925	5,793	6,440	6,759	18,992	2,602	1,462	697	4,761	28,678
Canal	2,307	2,760	1,290	6,357	8,626	7,816	7,955	24,397	2,529	1,616	626	4,771	35,525
Springburn	1,510	1,603	795	3,908	3,304	5,083	4,980	13,367	1,249	933	425	2,607	19,882
East Centre	2,002	2,455	1,002	5,459	5,260	9,510	6,951	21,721	2,347	1,511	802	4,660	31,840
Shettleston	1,585	1,981	956	4,522	4,139	5,936	7,101	17,176	2,733	1,675	758	5,166	26,864
Baillieston	2,049	2,851	1,587	6,487	5,741	6,906	9,516	22,163	3,267	1,948	864	6,079	34,729
North East	2,703	3,530	1,916	8,149	6,191	8,799	10,230	25,220	3,163	1,527	622	5,312	38,681
Glasgow City	38,594	47,618	23,236	109,448	122,983	157,316	149,465	429,764	49,633	28,072	12,779	90,484	629,696

Source:

Population figures are from projections for Wards by Glasgow City Council - DRS

The 2022 projections have been constrained to NRS 2012-base principal population projection for Glasgow City

Table B4 - Estimated Population Change by Age for Multi-Member Wards in Glasgow City in 2002 to 2012

Multi Member Ward	0-4	5-11	12-15	children	16-29	30-44	45-64	age 16-64	65-74	75-84	85+	age 65+	Total
Linn	54	-436	-165	-547	11	-791	1,113	333	146	23	126	295	81
Newlands/Auldburn	30	-281	-256	-507	198	-692	346	-148	-320	-35	-20	-375	-1,030
Greater Pollok	276	-214	72	134	1,138	-708	2,384	2,814	-139	464	56	381	3,329
Craigton	266	-449	-306	-489	360	-968	901	293	-719	-111	86	-744	-940
Govan	78	-430	-361	-713	1,199	171	802	2,172	-667	-270	-8	-945	514
Pollokshields	168	-41	-77	50	525	315	940	1,780	-58	-93	-13	-164	1,666
Langside	190	-249	-251	-310	-412	357	1,014	959	-125	-180	43	-262	387
Southside Central	284	-211	-188	-115	641	177	509	1,327	-446	-146	-60	-652	560
Calton	244	-313	-208	-277	2,803	640	773	4,216	-448	86	4	-358	3,581
Anderston/City	213	-177	-258	-222	4,729	1,781	717	7,227	-259	-177	-29	-465	6,540
Hillhead	124	-229	-162	-267	929	-238	532	1,223	-63	-65	-35	-163	793
Partick West	256	-187	-66	3	1,422	471	1,745	3,638	-87	-189	128	-148	3,493
Garscadden/Scotstounhill	229	-159	-9	61	729	-227	1,399	1,901	-643	-335	164	-814	1,148
Drumchapel/Anniesland	323	-207	-330	-214	870	-23	1,219	2,066	-400	-416	119	-697	1,155
Maryhill/Kelvin	-59	-615	-240	-914	564	-1,014	781	331	-167	-38	49	-156	-739
Canal	302	-226	-179	-103	1,315	79	659	2,053	-175	-129	-25	-329	1,621
Springburn	91	-435	-292	-636	-416	-1,342	180	-1,578	-527	-30	2	-555	-2,769
East Centre	309	-272	-228	-191	2,016	-168	449	2,297	-745	-116	11	-850	1,256
Shettleston	-21	-791	-235	-1,047	588	-1,243	743	88	-261	76	81	-104	-1,063
Baillieston	-93	-811	-188	-1,092	323	-2,001	1,781	103	24	270	166	460	-529
North East	113	-787	-444	-1,118	209	-1,484	1,947	672	-243	185	80	22	-424
Glasgow City	3,377	-7,520	-4,371	-8,514	19,741	-6,908	20,934	33,767	-6,322	-1,226	925	-6,623	18,630

Source:

Population estimates for data zones from National Records of Scotland

CROWN COPYRIGHT RESERVED

The ward estimates are based on 2002 and 2012 population estimates for data zones in Glasgow

Table B5 - Projected Population Change by Age for Multi-Member Wards in Glasgow City in 2012 to 2022

Multi Member Ward	0-4	5-11	12-15	children	16-29	30-44	45-64	age 16-64	65-74	75-84	85+	age 65+	Total
Linn	-7	221	-106	108	-1,020	390	61	-569	768	201	114	1,083	622
Newlands/Auldburn	22	166	-28	160	-556	856	-361	-61	267	-110	121	278	377
Greater Pollok	183	194	-139	238	-356	280	1,108	1,032	646	46	319	1,011	2,281
Craigton	97	434	27	558	-885	807	-84	-162	219	-256	165	128	524
Govan	427	603	-4	1,026	-1,953	2,357	489	893	279	-212	42	109	2,028
Pollokshields	14	279	52	345	-1,780	964	367	-449	553	-8	77	622	518
Langside	9	475	34	518	-2,170	671	432	-1,067	534	-44	48	538	-11
Southside Central	127	617	34	778	-1,168	1,873	764	1,469	-43	-109	72	-80	2,167
Calton	788	900	-37	1,651	351	3,695	763	4,809	303	-122	123	304	6,764
Anderston/City	305	245	59	609	-600	2,987	-139	2,248	-128	-256	-44	-428	2,429
Hillhead	152	224	-20	356	-973	1,433	-441	19	230	-34	11	207	582
Partick West	240	493	-98	635	-1,835	1,537	655	357	660	40	62	762	1,754
Garscadden/Scotstounhill	-93	206	17	130	-1,199	133	687	-379	339	-281	53	111	-138
Drumchapel/Anniesland	70	510	163	743	-1,654	1,085	482	-87	327	-88	-16	223	879
Maryhill/Kelvin	278	576	-77	777	-405	851	-276	170	441	64	140	645	1,592
Canal	550	746	41	1,337	259	1,144	594	1,997	-78	29	133	84	3,418
Springburn	-127	-33	-124	-284	-1,182	136	153	-893	-306	-155	113	-348	-1,525
East Centre	466	767	-39	1,194	-2,305	3,044	149	888	-30	-342	138	-234	1,848
Shettleston	234	428	-126	536	-765	1,086	-171	150	312	15	200	527	1,213
Baillieston	217	398	-143	472	-278	656	281	659	449	193	342	984	2,115
North East	357	733	208	1,298	-248	1,856	1,273	2,881	780	64	156	1,000	5,179
Glasgow City	4,309	9,182	-306	13,185	-20,722	27,841	6,786	13,905	6,522	-1,365	2,369	7,526	34,616

Sources:

Population estimates 2012 for data zones from National Records of Scotland

CROWN COPYRIGHT RESERVED

The ward estimates are based on 2012 population estimates for data zones in Glasgow

2022 population figures are from projections for Wards by Glasgow City Council - DRS

The 2022 projections have been constrained to the NRS 2012-base principal population projection for Glasgow City

DETAIL ON ESTIMATED/PROJECTED POPULATION AND HOUSEHOLD CHANGE GLASGOW CITY

Population change by Age

Age band	2002	2012	2022	2002-2012	2012-2022
0-4	30,908	34,285	38,594	3,377	4,309
5-11	45,956	38,436	47,618	-7,520	9,182
12-15	27,913	23,542	23,236	-4,371	-306
children	104,777	96,263	109,448	-8,514	13,185
16-29	123,964	143,705	122,983	19,741	-20,722
30-44	136,383	129,475	157,316	-6,908	27,841
45-64	121,745	142,679	149,465	20,934	6,786
age 16-64	382,092	415,859	429,764	33,767	13,905
65-74	49,433	43,111	49,633	-6,322	6,522
75-84	30,663	29,437	28,072	-1,226	-1,365
85+	9,485	10,410	12,779	925	2,369
age 65+	89,581	82,958	90,484	-6,623	7,526
Total	576,450	595,080	629,696	18,630	34,616

Annual Population change by Component

Component	2002-2007	2007-2012	2002-2012	2012-2022
Births	6,700	7,472	7,086	7,795
Deaths	7,292	6,576	6,934	6,079
Natural change	-593	896	152	1,717
Net migration a.o.	-345	3,768	1,711	1,745
Total change	-938	4,664	1,863	3,462

Annual Net Migration by Age

Age band	2002-2007	2007-2012	2002-2012	2012-2022
0 to 15	-899	-1,109	-1,004	-896
16 to 29	3,158	5,567	4,362	4,452
30 to 44	-1,639	-480	-1,059	-1,247
45 to 64	-558	-66	-312	-318
65+	-407	-144	-275	-246
Total	-345	3,768	1,711	1,745

Population Change and Household Change by Type

	2002	2012	2022	2002-2012	2012-2022
Total Population	576,450	595,080	629,696	18,630	34,616
in Communal Est.	12,037	16,051	17,530	4,014	1,479
in Households	564,413	579,029	612,166	14,616	33,137
Av. household size	2.067	2.024	1.961	-0.043	-0.062
Total households	273,058	286,134	312,107	13,076	25,973
one adult	114,777	126,538	141,464	11,761	14,926
two adults	65,815	71,124	73,695	5,309	2,571
three or more adults	23,019	23,299	22,848	280	-451
one adult families	24,906	24,525	28,983	-381	4,458
two+ adults families	44,541	40,648	45,117	-3,893	4,469

Sources: Population and Household estimates and projections from National Records of Scotland

Adjustments have been made to the 2022 CE population and the household projections by household type

DETAIL ON ESTIMATED/PROJECTED POPULATION CHANGE BY SEX AND AGE
GLASGOW CITY

Population change for Males

Age band	2002	2012	2022	2002-2012	2012-2022
0 to 4	15,881	17,406	19,730	1,525	2,324
5 to 9	16,353	14,124	17,367	-2,229	3,243
10 to 14	17,801	14,319	15,718	-3,482	1,399
15 to 19	19,532	17,695	14,482	-1,837	-3,213
20 to 24	22,912	28,182	21,393	5,270	-6,789
25 to 29	20,812	27,678	27,058	6,866	-620
30 to 34	22,571	24,507	31,418	1,936	6,911
35 to 39	22,246	19,435	26,245	-2,811	6,810
40 to 44	20,406	20,659	21,684	253	1,025
45 to 49	17,993	20,573	17,005	2,580	-3,568
50 to 54	15,649	18,842	18,727	3,193	-115
55 to 59	13,901	16,055	18,830	2,154	2,775
60 to 64	12,316	13,647	16,636	1,331	2,989
65 to 69	11,272	11,242	13,157	-30	1,915
70 to 74	9,606	8,536	10,153	-1,070	1,617
75 to 79	6,824	6,715	7,155	-109	440
80 to 84	4,044	4,416	4,388	372	-28
85 and over	2,243	2,875	3,886	632	1,011
Total	272,362	286,906	305,032	14,544	18,126

Population change for Females

Age band	2002	2012	2022	2002-2012	2012-2022
0 to 4	15,027	16,879	18,864	1,852	1,985
5 to 9	15,551	13,594	16,721	-1,957	3,127
10 to 14	16,960	13,712	15,474	-3,248	1,762
15 to 19	19,749	17,549	14,871	-2,200	-2,678
20 to 24	25,394	30,508	23,276	5,114	-7,232
25 to 29	22,769	28,322	27,477	5,553	-845
30 to 34	24,764	24,282	31,250	-482	6,968
35 to 39	24,283	19,093	25,236	-5,190	6,143
40 to 44	22,113	21,499	21,483	-614	-16
45 to 49	18,154	22,273	17,516	4,119	-4,757
50 to 54	15,406	20,696	20,420	5,290	-276
55 to 59	14,363	16,608	21,150	2,245	4,542
60 to 64	13,963	13,985	19,181	22	5,196
65 to 69	14,640	12,247	14,687	-2,393	2,440
70 to 74	13,915	11,086	11,636	-2,829	550
75 to 79	11,176	10,328	9,280	-848	-1,048
80 to 84	8,619	7,978	7,249	-641	-729
85 and over	7,242	7,535	8,893	293	1,358
Total	304,088	308,174	324,664	4,086	16,490

Sources: Population estimates and projections from National Records of Scotland - Crown Copyright

DETAIL ON ESTIMATED/PROJECTED POPULATION AND HOUSEHOLD CHANGE
WARD 01 - LINN

Population change by Age

Age band	2002	2012	2022	2002-2012	2012-2022
0-4	1,720	1,774	1,767	54	-7
5-11	2,691	2,255	2,476	-436	221
12-15	1,649	1,484	1,378	-165	-106
children	6,060	5,513	5,621	-547	108
16-29	5,475	5,486	4,466	11	-1,020
30-44	6,633	5,842	6,232	-791	390
45-64	6,755	7,868	7,929	1,113	61
age 16-64	18,863	19,196	18,627	333	-569
65-74	2,194	2,340	3,108	146	768
75-84	1,348	1,371	1,572	23	201
85+	367	493	607	126	114
age 65+	3,909	4,204	5,287	295	1,083
Total	28,832	28,913	29,535	81	622

Annual Population change by Component

Component	2002-2007	2007-2012	2002-2012	2012-2022
Births	338	362	350	348
Deaths	307	309	308	303
Natural change	31	54	43	45
Net migration a.o.	-90	21	-34	17
Total change	-59	75	8	62

Annual Net Migration by Age

Age band	2002-2007	2007-2012	2002-2012	2012-2022
0 to 15	-32	-12	-22	5
16 to 29	-8	13	3	-11
30 to 44	-30	12	-9	14
45 to 64	-13	16	1	16
65+	-7	-8	-8	-7
Total	-90	21	-34	17

Population Change and Household Change by Type

	2002	2012	2022	2002-2012	2012-2022
Total Population	28,832	28,913	29,535	81	622
in Communal Est.	115	229	271	114	42
in Households	28,717	28,684	29,264	-33	580
Av. household size	2.269	2.215	2.116	-0.053	-0.100
Total households	12,659	12,947	13,831	288	884
one adult	4,263	4,830	5,484	567	654
two adults	3,002	3,134	3,316	132	182
three or more adults	1,260	1,274	1,261	14	-13
one adult families	1,463	1,469	1,537	6	68
two+ adults families	2,671	2,240	2,233	-431	-7

Sources: Ward population estimates based on Data Zone estimates from National Records of Scotland
Household estimates and population and household projections from Glasgow City Council - DRS

DETAIL ON ESTIMATED/PROJECTED POPULATION CHANGE BY SEX AND AGE
WARD 01 - LINN

Population change for Males

Age band	2002	2012	2022	2002-2012	2012-2022
0 to 4	857	862	891	5	29
5 to 9	923	807	844	-116	37
10 to 14	1,059	872	834	-187	-38
15 to 19	1,109	892	773	-217	-119
20 to 24	947	999	726	52	-273
25 to 29	760	986	805	226	-181
30 to 34	957	874	1,047	-83	173
35 to 39	1,045	811	1,021	-234	210
40 to 44	993	966	895	-27	-71
45 to 49	1,005	1,009	817	4	-192
50 to 54	912	925	943	13	18
55 to 59	717	901	958	184	57
60 to 64	574	784	842	210	58
65 to 69	522	609	765	87	156
70 to 74	404	418	609	14	191
75 to 79	340	336	405	-4	69
80 to 84	143	203	226	60	23
85 and over	101	146	212	45	66
Total	13,368	13,400	13,613	32	213

Population change for Females

Age band	2002	2012	2022	2002-2012	2012-2022
0 to 4	863	912	876	49	-36
5 to 9	918	789	881	-129	92
10 to 14	1,013	895	946	-118	51
15 to 19	1,069	898	777	-171	-121
20 to 24	965	1,019	813	54	-206
25 to 29	1,052	1,068	921	16	-147
30 to 34	1,194	1,068	1,139	-126	71
35 to 39	1,280	935	1,089	-345	154
40 to 44	1,164	1,188	1,041	24	-147
45 to 49	1,129	1,181	920	52	-261
50 to 54	914	1,147	1,179	233	32
55 to 59	788	1,082	1,159	294	77
60 to 64	716	839	1,111	123	272
65 to 69	648	732	1,011	84	279
70 to 74	620	581	723	-39	142
75 to 79	492	465	562	-27	97
80 to 84	373	367	379	-6	12
85 and over	266	347	395	81	48
Total	15,464	15,513	15,922	49	409

Sources: Ward population estimates based on Data Zone estimates from National Records of Scotland
Population projections from Glasgow City Council - DRS

DETAIL ON ESTIMATED/PROJECTED POPULATION AND HOUSEHOLD CHANGE
WARD 02 - NEWLANDS/AULDBURN

Population change by Age

Age band	2002	2012	2022	2002-2012	2012-2022
0-4	1,384	1,414	1,436	30	22
5-11	1,993	1,712	1,878	-281	166
12-15	1,281	1,025	997	-256	-28
children	4,658	4,151	4,311	-507	160
16-29	3,978	4,176	3,620	198	-556
30-44	5,263	4,571	5,427	-692	856
45-64	5,933	6,279	5,918	346	-361
age 16-64	15,174	15,026	14,965	-148	-61
65-74	2,368	2,048	2,315	-320	267
75-84	1,486	1,451	1,341	-35	-110
85+	533	513	634	-20	121
age 65+	4,387	4,012	4,290	-375	278
Total	24,219	23,189	23,566	-1,030	377

Annual Population change by Component

Component	2002-2007	2007-2012	2002-2012	2012-2022
Births	314	303	309	289
Deaths	293	272	282	250
Natural change	21	32	26	39
Net migration a.o.	-125	-134	-129	-2
Total change	-103	-103	-103	38

Annual Net Migration by Age

Age band	2002-2007	2007-2012	2002-2012	2012-2022
0 to 15	-74	-69	-71	-34
16 to 29	36	18	27	66
30 to 44	9	-6	2	28
45 to 64	-31	-33	-32	-22
65+	-64	-45	-55	-39
Total	-125	-134	-129	-2

Population Change and Household Change by Type

	2002	2012	2022	2002-2012	2012-2022
Total Population	24,219	23,189	23,566	-1,030	377
in Communal Est.	104	82	89	-22	7
in Households	24,115	23,107	23,477	-1,008	370
Av. household size	2.181	2.144	2.082	-0.037	-0.062
Total households	11,055	10,777	11,278	-278	501
one adult	4,367	4,589	5,017	222	428
two adults	2,652	2,521	2,568	-131	47
three or more adults	1,022	982	912	-40	-70
one adult families	899	865	943	-34	78
two+ adults families	2,115	1,820	1,838	-295	18

Sources: Ward population estimates based on Data Zone estimates from National Records of Scotland
Household estimates and population and household projections from Glasgow City Council - DRS

DETAIL ON ESTIMATED/PROJECTED POPULATION CHANGE BY SEX AND AGE
WARD 02 - NEWLANDS/AULDBURN

Population change for Males

Age band	2002	2012	2022	2002-2012	2012-2022
0 to 4	757	724	730	-33	6
5 to 9	695	644	653	-51	9
10 to 14	765	648	651	-117	3
15 to 19	854	678	583	-176	-95
20 to 24	695	770	614	75	-156
25 to 29	600	830	861	230	31
30 to 34	805	769	1,055	-36	286
35 to 39	907	684	1,008	-223	324
40 to 44	858	804	823	-54	19
45 to 49	900	808	610	-92	-198
50 to 54	744	845	724	101	-121
55 to 59	678	762	744	84	-18
60 to 64	600	664	744	64	80
65 to 69	546	530	630	-16	100
70 to 74	461	414	496	-47	82
75 to 79	325	333	350	8	17
80 to 84	177	219	230	42	11
85 and over	118	133	219	15	86
Total	11,485	11,259	11,725	-226	466

Population change for Females

Age band	2002	2012	2022	2002-2012	2012-2022
0 to 4	627	690	706	63	16
5 to 9	698	635	657	-63	22
10 to 14	778	553	660	-225	107
15 to 19	740	621	583	-119	-38
20 to 24	708	772	493	64	-279
25 to 29	719	762	740	43	-22
30 to 34	813	805	939	-8	134
35 to 39	953	730	787	-223	57
40 to 44	927	779	815	-148	36
45 to 49	900	907	732	7	-175
50 to 54	740	852	760	112	-92
55 to 59	685	787	841	102	54
60 to 64	686	654	763	-32	109
65 to 69	688	581	668	-107	87
70 to 74	673	523	521	-150	-2
75 to 79	542	473	428	-69	-45
80 to 84	442	426	333	-16	-93
85 and over	415	380	415	-35	35
Total	12,734	11,930	11,841	-804	-89

Sources: Ward population estimates based on Data Zone estimates from National Records of Scotland
Population projections from Glasgow City Council - DRS

DETAIL ON ESTIMATED/PROJECTED POPULATION AND HOUSEHOLD CHANGE
WARD 03 - GREATER POLLOK

Population change by Age

Age band	2002	2012	2022	2002-2012	2012-2022
0-4	1,928	2,204	2,387	276	183
5-11	3,099	2,885	3,079	-214	194
12-15	1,764	1,836	1,697	72	-139
children	6,791	6,925	7,163	134	238
16-29	5,275	6,413	6,057	1,138	-356
30-44	7,546	6,838	7,118	-708	280
45-64	6,368	8,752	9,860	2,384	1,108
age 16-64	19,189	22,003	23,035	2,814	1,032
65-74	2,366	2,227	2,873	-139	646
75-84	1,030	1,494	1,540	464	46
85+	351	407	726	56	319
age 65+	3,747	4,128	5,139	381	1,011
Total	29,727	33,056	35,337	3,329	2,281

Annual Population change by Component

Component	2002-2007	2007-2012	2002-2012	2012-2022
Births	426	467	447	469
Deaths	359	321	340	330
Natural change	67	146	107	139
Net migration a.o.	326	127	226	89
Total change	393	273	333	228

Annual Net Migration by Age

Age band	2002-2007	2007-2012	2002-2012	2012-2022
0 to 15	58	-15	21	-5
16 to 29	79	54	67	18
30 to 44	133	48	90	41
45 to 64	18	16	17	13
65+	38	24	31	22
Total	326	127	226	89

Population Change and Household Change by Type

	2002	2012	2022	2002-2012	2012-2022
Total Population	29,727	33,056	35,337	3,329	2,281
in Communal Est.	460	520	686	60	166
in Households	29,267	32,536	34,651	3,269	2,115
Av. household size	2.356	2.399	2.282	0.044	-0.117
Total households	12,423	13,560	15,185	1,137	1,625
one adult	3,719	4,323	5,218	604	895
two adults	2,928	3,206	3,665	278	459
three or more adults	1,167	1,396	1,520	229	124
one adult families	1,505	1,470	1,592	-35	122
two+ adults families	3,104	3,165	3,190	61	25

Sources: Ward population estimates based on Data Zone estimates from National Records of Scotland
Household estimates and population and household projections from Glasgow City Council - DRS

DETAIL ON ESTIMATED/PROJECTED POPULATION CHANGE BY SEX AND AGE
WARD 03 - GREATER POLLOK

Population change for Males

Age band	2002	2012	2022	2002-2012	2012-2022
0 to 4	1,021	1,108	1,209	87	101
5 to 9	1,135	1,063	1,068	-72	5
10 to 14	1,166	1,091	1,060	-75	-31
15 to 19	1,112	1,150	1,055	38	-95
20 to 24	888	1,180	998	292	-182
25 to 29	711	1,017	1,102	306	85
30 to 34	1,075	978	1,245	-97	267
35 to 39	1,157	937	1,086	-220	149
40 to 44	1,108	1,199	1,029	91	-170
45 to 49	1,017	1,301	978	284	-323
50 to 54	718	1,169	1,223	451	54
55 to 59	689	944	1,256	255	312
60 to 64	635	690	1,074	55	384
65 to 69	529	564	816	35	252
70 to 74	491	432	524	-59	92
75 to 79	244	343	360	99	17
80 to 84	150	225	223	75	-2
85 and over	82	110	195	28	85
Total	13,928	15,501	16,501	1,573	1,000

Population change for Females

Age band	2002	2012	2022	2002-2012	2012-2022
0 to 4	907	1,096	1,178	189	82
5 to 9	1,045	1,012	1,093	-33	81
10 to 14	1,075	1,051	1,119	-24	68
15 to 19	1,090	1,197	1,039	107	-158
20 to 24	894	1,201	1,019	307	-182
25 to 29	1,022	1,172	1,280	150	108
30 to 34	1,301	1,115	1,366	-186	251
35 to 39	1,551	1,128	1,230	-423	102
40 to 44	1,354	1,481	1,162	127	-319
45 to 49	1,044	1,579	1,165	535	-414
50 to 54	849	1,316	1,452	467	136
55 to 59	733	966	1,497	233	531
60 to 64	683	787	1,215	104	428
65 to 69	760	638	855	-122	217
70 to 74	586	593	678	7	85
75 to 79	367	561	528	194	-33
80 to 84	269	365	429	96	64
85 and over	269	297	531	28	234
Total	15,799	17,555	18,836	1,756	1,281

Sources: Ward population estimates based on Data Zone estimates from National Records of Scotland
Population projections from Glasgow City Council - DRS

DETAIL ON ESTIMATED/PROJECTED POPULATION AND HOUSEHOLD CHANGE
WARD 04 - CRAIGTON

Population change by Age

Age band	2002	2012	2022	2002-2012	2012-2022
0-4	1,586	1,852	1,949	266	97
5-11	2,745	2,296	2,730	-449	434
12-15	1,789	1,483	1,510	-306	27
children	6,120	5,631	6,189	-489	558
16-29	5,004	5,364	4,479	360	-885
30-44	6,617	5,649	6,456	-968	807
45-64	6,823	7,724	7,640	901	-84
age 16-64	18,444	18,737	18,575	293	-162
65-74	3,294	2,575	2,794	-719	219
75-84	2,078	1,967	1,711	-111	-256
85+	630	716	881	86	165
age 65+	6,002	5,258	5,386	-744	128
Total	30,566	29,626	30,150	-940	524

Annual Population change by Component

Component	2002-2007	2007-2012	2002-2012	2012-2022
Births	315	364	339	367
Deaths	427	370	398	339
Natural change	-112	-6	-59	28
Net migration a.o.	8	-78	-35	24
Total change	-104	-84	-94	52

Annual Net Migration by Age

Age band	2002-2007	2007-2012	2002-2012	2012-2022
0 to 15	8	7	7	26
16 to 29	37	-43	-3	4
30 to 44	34	11	23	35
45 to 64	-13	-21	-17	-13
65+	-59	-32	-46	-27
Total	8	-78	-35	24

Population Change and Household Change by Type

	2002	2012	2022	2002-2012	2012-2022
Total Population	30,566	29,626	30,150	-940	524
in Communal Est.	243	230	249	-13	19
in Households	30,323	29,396	29,901	-927	505
Av. household size	2.242	2.226	2.191	-0.016	-0.035
Total households	13,524	13,205	13,648	-319	443
one adult	4,884	5,028	5,321	144	293
two adults	3,275	3,141	2,994	-134	-147
three or more adults	1,365	1,312	1,248	-53	-64
one adult families	1,274	1,384	1,579	110	195
two+ adults families	2,726	2,340	2,506	-386	166

Sources: Ward population estimates based on Data Zone estimates from National Records of Scotland
Household estimates and population and household projections from Glasgow City Council - DRS

DETAIL ON ESTIMATED/PROJECTED POPULATION CHANGE BY SEX AND AGE
WARD 04 - CRAIGTON

Population change for Males

Age band	2002	2012	2022	2002-2012	2012-2022
0 to 4	832	937	987	105	50
5 to 9	972	850	957	-122	107
10 to 14	1,126	861	966	-265	105
15 to 19	1,158	899	780	-259	-119
20 to 24	880	930	675	50	-255
25 to 29	729	956	761	227	-195
30 to 34	853	922	951	69	29
35 to 39	1,084	758	1,048	-326	290
40 to 44	1,081	923	992	-158	69
45 to 49	927	987	751	60	-236
50 to 54	821	978	857	157	-121
55 to 59	708	836	916	128	80
60 to 64	698	711	863	13	152
65 to 69	695	615	690	-80	75
70 to 74	632	472	552	-160	80
75 to 79	434	417	407	-17	-10
80 to 84	283	310	248	27	-62
85 and over	147	184	253	37	69
Total	14,060	13,546	13,654	-514	108

Population change for Females

Age band	2002	2012	2022	2002-2012	2012-2022
0 to 4	754	915	962	161	47
5 to 9	911	815	964	-96	149
10 to 14	1,032	857	997	-175	140
15 to 19	1,065	901	809	-164	-92
20 to 24	869	1,026	804	157	-222
25 to 29	796	1,048	1,006	252	-42
30 to 34	1,108	1,040	1,252	-68	212
35 to 39	1,253	897	1,157	-356	260
40 to 44	1,238	1,109	1,056	-129	-53
45 to 49	1,088	1,237	867	149	-370
50 to 54	831	1,185	1,057	354	-128
55 to 59	857	985	1,193	128	208
60 to 64	893	805	1,136	-88	331
65 to 69	1,000	799	888	-201	89
70 to 74	967	689	664	-278	-25
75 to 79	811	684	599	-127	-85
80 to 84	550	556	457	6	-99
85 and over	483	532	628	49	96
Total	16,506	16,080	16,496	-426	416

Sources: Ward population estimates based on Data Zone estimates from National Records of Scotland
Population projections from Glasgow City Council - DRS

DETAIL ON ESTIMATED/PROJECTED POPULATION AND HOUSEHOLD CHANGE
WARD 05 - GOVAN

Population change by Age

Age band	2002	2012	2022	2002-2012	2012-2022
0-4	1,657	1,735	2,162	78	427
5-11	2,245	1,815	2,418	-430	603
12-15	1,373	1,012	1,008	-361	-4
children	5,275	4,562	5,588	-713	1,026
16-29	6,680	7,879	5,926	1,199	-1,953
30-44	6,965	7,136	9,493	171	2,357
45-64	6,352	7,154	7,643	802	489
age 16-64	19,997	22,169	23,062	2,172	893
65-74	2,804	2,137	2,416	-667	279
75-84	1,792	1,522	1,310	-270	-212
85+	606	598	640	-8	42
age 65+	5,202	4,257	4,366	-945	109
Total	30,474	30,988	33,016	514	2,028

Annual Population change by Component

Component	2002-2007	2007-2012	2002-2012	2012-2022
Births	373	410	392	453
Deaths	475	430	453	375
Natural change	-101	-20	-61	78
Net migration a.o.	-87	311	112	125
Total change	-188	291	51	203

Annual Net Migration by Age

Age band	2002-2007	2007-2012	2002-2012	2012-2022
0 to 15	-167	-116	-141	-109
16 to 29	226	483	354	346
30 to 44	-104	-74	-89	-115
45 to 64	-41	3	-19	-9
65+	-2	16	7	12
Total	-87	311	112	125

Population Change and Household Change by Type

	2002	2012	2022	2002-2012	2012-2022
Total Population	30,474	30,988	33,016	514	2,028
in Communal Est.	590	874	842	284	-32
in Households	29,884	30,114	32,174	230	2,060
Av. household size	1.908	1.851	1.800	-0.058	-0.051
Total households	15,662	16,273	17,879	611	1,606
one adult	7,597	8,129	9,044	532	915
two adults	3,612	3,836	3,867	224	31
three or more adults	975	1,085	1,028	110	-57
one adult families	1,460	1,363	1,696	-97	333
two+ adults families	2,018	1,860	2,244	-158	384

Sources: Ward population estimates based on Data Zone estimates from National Records of Scotland
Household estimates and population and household projections from Glasgow City Council - DRS

DETAIL ON ESTIMATED/PROJECTED POPULATION CHANGE BY SEX AND AGE
WARD 05 - GOVAN

Population change for Males

Age band	2002	2012	2022	2002-2012	2012-2022
0 to 4	856	897	1,118	41	221
5 to 9	809	698	925	-111	227
10 to 14	847	626	703	-221	77
15 to 19	995	866	650	-129	-216
20 to 24	1,074	1,548	1,013	474	-535
25 to 29	1,345	1,808	1,716	463	-92
30 to 34	1,237	1,550	2,127	313	577
35 to 39	1,166	1,127	1,730	-39	603
40 to 44	1,048	1,125	1,240	77	115
45 to 49	976	1,077	949	101	-128
50 to 54	821	1,004	1,030	183	26
55 to 59	753	856	1,004	103	148
60 to 64	676	726	912	50	186
65 to 69	646	573	709	-73	136
70 to 74	516	447	525	-69	78
75 to 79	375	332	346	-43	14
80 to 84	232	228	221	-4	-7
85 and over	143	162	186	19	24
Total	14,515	15,650	17,104	1,135	1,454

Population change for Females

Age band	2002	2012	2022	2002-2012	2012-2022
0 to 4	801	838	1,044	37	206
5 to 9	773	648	865	-125	217
10 to 14	813	624	687	-189	63
15 to 19	979	701	593	-278	-108
20 to 24	1,348	1,529	871	181	-658
25 to 29	1,315	1,658	1,329	343	-329
30 to 34	1,209	1,341	1,864	132	523
35 to 39	1,220	958	1,404	-262	446
40 to 44	1,085	1,035	1,128	-50	93
45 to 49	918	994	898	76	-96
50 to 54	772	1,022	999	250	-23
55 to 59	757	839	935	82	96
60 to 64	679	636	916	-43	280
65 to 69	846	601	697	-245	96
70 to 74	796	516	485	-280	-31
75 to 79	660	537	419	-123	-118
80 to 84	525	425	324	-100	-101
85 and over	463	436	454	-27	18
Total	15,959	15,338	15,912	-621	574

Sources: Ward population estimates based on Data Zone estimates from National Records of Scotland
Population projections from Glasgow City Council - DRS

DETAIL ON ESTIMATED/PROJECTED POPULATION AND HOUSEHOLD CHANGE
WARD 06 - POLLOKSHIELDS

Population change by Age

Age band	2002	2012	2022	2002-2012	2012-2022
0-4	1,371	1,539	1,553	168	14
5-11	1,694	1,653	1,932	-41	279
12-15	963	886	938	-77	52
children	4,028	4,078	4,423	50	345
16-29	4,407	4,932	3,152	525	-1,780
30-44	5,423	5,738	6,702	315	964
45-64	4,169	5,109	5,476	940	367
age 16-64	13,999	15,779	15,330	1,780	-449
65-74	1,426	1,368	1,921	-58	553
75-84	1,042	949	941	-93	-8
85+	410	397	474	-13	77
age 65+	2,878	2,714	3,336	-164	622
Total	20,905	22,571	23,089	1,666	518

Annual Population change by Component

Component	2002-2007	2007-2012	2002-2012	2012-2022
Births	327	356	342	350
Deaths	203	179	191	174
Natural change	124	177	151	176
Net migration a.o.	-148	180	16	-124
Total change	-24	357	167	52

Annual Net Migration by Age

Age band	2002-2007	2007-2012	2002-2012	2012-2022
0 to 15	-112	-82	-97	-101
16 to 29	177	295	236	112
30 to 44	-131	-32	-81	-102
45 to 64	-48	7	-21	-15
65+	-34	-7	-20	-19
Total	-148	180	16	-124

Population Change and Household Change by Type

	2002	2012	2022	2002-2012	2012-2022
Total Population	20,905	22,571	23,089	1,666	518
in Communal Est.	337	239	272	-98	33
in Households	20,568	22,332	22,817	1,764	485
Av. household size	2.276	2.285	2.178	0.009	-0.107
Total households	9,036	9,772	10,476	736	704
one adult	3,560	3,984	4,546	424	562
two adults	2,447	2,652	2,630	205	-22
three or more adults	762	775	747	13	-28
one adult families	378	412	439	34	27
two+ adults families	1,889	1,949	2,114	60	165

Sources: Ward population estimates based on Data Zone estimates from National Records of Scotland
Household estimates and population and household projections from Glasgow City Council - DRS

DETAIL ON ESTIMATED/PROJECTED POPULATION CHANGE BY SEX AND AGE
WARD 06 - POLLOKSHIELDS

Population change for Males

Age band	2002	2012	2022	2002-2012	2012-2022
0 to 4	688	772	791	84	19
5 to 9	593	615	712	22	97
10 to 14	628	582	630	-46	48
15 to 19	683	604	526	-79	-78
20 to 24	768	824	471	56	-353
25 to 29	835	1,190	797	355	-393
30 to 34	1,049	1,267	1,214	218	-53
35 to 39	907	840	1,246	-67	406
40 to 44	776	887	1,070	111	183
45 to 49	689	723	644	34	-79
50 to 54	609	659	749	50	90
55 to 59	423	585	651	162	66
60 to 64	379	523	577	144	54
65 to 69	332	378	496	46	118
70 to 74	274	296	419	22	123
75 to 79	234	237	267	3	30
80 to 84	143	149	169	6	20
85 and over	106	125	158	19	33
Total	10,116	11,256	11,587	1,140	331

Population change for Females

Age band	2002	2012	2022	2002-2012	2012-2022
0 to 4	683	767	762	84	-5
5 to 9	595	560	688	-35	128
10 to 14	573	557	619	-16	62
15 to 19	669	558	448	-111	-110
20 to 24	796	792	393	-4	-399
25 to 29	924	1,189	738	265	-451
30 to 34	1,025	1,136	1,148	111	12
35 to 39	856	807	1,104	-49	297
40 to 44	810	801	920	-9	119
45 to 49	642	724	684	82	-40
50 to 54	590	769	746	179	-23
55 to 59	433	602	694	169	92
60 to 64	404	524	731	120	207
65 to 69	429	343	550	-86	207
70 to 74	391	351	456	-40	105
75 to 79	371	325	270	-46	-55
80 to 84	294	238	235	-56	-3
85 and over	304	272	316	-32	44
Total	10,789	11,315	11,502	526	187

Sources: Ward population estimates based on Data Zone estimates from National Records of Scotland
Population projections from Glasgow City Council - DRS

DETAIL ON ESTIMATED/PROJECTED POPULATION AND HOUSEHOLD CHANGE
WARD 07 - LANGSIDE

Population change by Age

Age band	2002	2012	2022	2002-2012	2012-2022
0-4	1,042	1,232	1,241	190	9
5-11	1,363	1,114	1,589	-249	475
12-15	842	591	625	-251	34
children	3,247	2,937	3,455	-310	518
16-29	5,459	5,047	2,877	-412	-2,170
30-44	6,513	6,870	7,541	357	671
45-64	4,360	5,374	5,806	1,014	432
age 16-64	16,332	17,291	16,224	959	-1,067
65-74	1,567	1,442	1,976	-125	534
75-84	1,207	1,027	983	-180	-44
85+	363	406	454	43	48
age 65+	3,137	2,875	3,413	-262	538
Total	22,716	23,103	23,092	387	-11

Annual Population change by Component

Component	2002-2007	2007-2012	2002-2012	2012-2022
Births	245	294	270	278
Deaths	216	195	206	187
Natural change	29	99	64	91
Net migration a.o.	-119	68	-26	-92
Total change	-90	168	39	-1

Annual Net Migration by Age

Age band	2002-2007	2007-2012	2002-2012	2012-2022
0 to 15	-131	-97	-114	-96
16 to 29	349	383	366	277
30 to 44	-254	-178	-216	-216
45 to 64	-36	-24	-30	-34
65+	-47	-16	-31	-23
Total	-119	68	-26	-92

Population Change and Household Change by Type

	2002	2012	2022	2002-2012	2012-2022
Total Population	22,716	23,103	23,092	387	-11
in Communal Est.	145	91	83	-54	-8
in Households	22,571	23,012	23,009	441	-3
Av. household size	1.853	1.834	1.770	-0.019	-0.064
Total households	12,179	12,548	13,001	369	453
one adult	5,956	6,376	6,850	420	474
two adults	3,207	3,484	3,168	277	-316
three or more adults	772	714	666	-58	-48
one adult families	587	536	616	-51	80
two+ adults families	1,657	1,438	1,701	-219	263

Sources: Ward population estimates based on Data Zone estimates from National Records of Scotland
Household estimates and population and household projections from Glasgow City Council - DRS

DETAIL ON ESTIMATED/PROJECTED POPULATION CHANGE BY SEX AND AGE
WARD 07 - LANGSIDE

Population change for Males

Age band	2002	2012	2022	2002-2012	2012-2022
0 to 4	532	639	645	107	6
5 to 9	501	415	593	-86	178
10 to 14	511	366	478	-145	112
15 to 19	561	446	275	-115	-171
20 to 24	749	670	270	-79	-400
25 to 29	1,349	1,353	857	4	-496
30 to 34	1,329	1,479	1,325	150	-154
35 to 39	1,035	1,047	1,322	12	275
40 to 44	873	939	1,030	66	91
45 to 49	752	806	738	54	-68
50 to 54	632	714	770	82	56
55 to 59	468	622	701	154	79
60 to 64	377	562	610	185	48
65 to 69	332	394	501	62	107
70 to 74	288	273	434	-15	161
75 to 79	224	225	269	1	44
80 to 84	168	153	148	-15	-5
85 and over	90	112	144	22	32
Total	10,771	11,215	11,110	444	-105

Population change for Females

Age band	2002	2012	2022	2002-2012	2012-2022
0 to 4	510	593	596	83	3
5 to 9	478	403	544	-75	141
10 to 14	508	363	458	-145	95
15 to 19	572	395	303	-177	-92
20 to 24	924	788	354	-136	-434
25 to 29	1,511	1,553	959	42	-594
30 to 34	1,412	1,523	1,419	111	-104
35 to 39	979	1,030	1,347	51	317
40 to 44	885	852	1,098	-33	246
45 to 49	709	770	786	61	16
50 to 54	553	753	746	200	-7
55 to 59	477	629	744	152	115
60 to 64	392	518	711	126	193
65 to 69	456	434	570	-22	136
70 to 74	491	341	471	-150	130
75 to 79	442	341	348	-101	7
80 to 84	373	308	218	-65	-90
85 and over	273	294	310	21	16
Total	11,945	11,888	11,982	-57	94

Sources: Ward population estimates based on Data Zone estimates from National Records of Scotland
Population projections from Glasgow City Council - DRS

DETAIL ON ESTIMATED/PROJECTED POPULATION AND HOUSEHOLD CHANGE
WARD 08 - SOUTHSIDE CENTRAL

Population change by Age

Age band	2002	2012	2022	2002-2012	2012-2022
0-4	1,632	1,916	2,043	284	127
5-11	2,007	1,796	2,413	-211	617
12-15	1,210	1,022	1,056	-188	34
children	4,849	4,734	5,512	-115	778
16-29	5,838	6,479	5,311	641	-1,168
30-44	7,163	7,340	9,213	177	1,873
45-64	5,882	6,391	7,155	509	764
age 16-64	18,883	20,210	21,679	1,327	1,469
65-74	2,508	2,062	2,019	-446	-43
75-84	1,501	1,355	1,246	-146	-109
85+	469	409	481	-60	72
age 65+	4,478	3,826	3,746	-652	-80
Total	28,210	28,770	30,937	560	2,167

Annual Population change by Component

Component	2002-2007	2007-2012	2002-2012	2012-2022
Births	379	471	425	449
Deaths	353	313	333	271
Natural change	26	158	92	178
Net migration a.o.	-158	86	-36	39
Total change	-132	244	56	217

Annual Net Migration by Age

Age band	2002-2007	2007-2012	2002-2012	2012-2022
0 to 15	-150	-149	-150	-123
16 to 29	274	371	323	313
30 to 44	-149	-38	-94	-50
45 to 64	-60	-56	-58	-59
65+	-73	-41	-57	-41
Total	-158	86	-36	39

Population Change and Household Change by Type

	2002	2012	2022	2002-2012	2012-2022
Total Population	28,210	28,770	30,937	560	2,167
in Communal Est.	110	343	327	233	-16
in Households	28,100	28,427	30,610	327	2,183
Av. household size	1.875	1.890	1.838	0.016	-0.052
Total households	14,989	15,037	16,652	48	1,615
one adult	7,549	7,859	8,897	310	1,038
two adults	3,314	3,293	3,407	-21	114
three or more adults	953	892	874	-61	-18
one adult families	1,298	1,150	1,363	-148	213
two+ adults families	1,875	1,843	2,111	-32	268

Sources: Ward population estimates based on Data Zone estimates from National Records of Scotland
Household estimates and population and household projections from Glasgow City Council - DRS

DETAIL ON ESTIMATED/PROJECTED POPULATION CHANGE BY SEX AND AGE
WARD 08 - SOUTHSIDE CENTRAL

Population change for Males

Age band	2002	2012	2022	2002-2012	2012-2022
0 to 4	825	981	1,057	156	76
5 to 9	710	705	907	-5	202
10 to 14	766	634	793	-132	159
15 to 19	785	753	694	-32	-59
20 to 24	1,040	1,380	972	340	-408
25 to 29	1,121	1,500	1,543	379	43
30 to 34	1,391	1,505	2,113	114	608
35 to 39	1,299	1,243	1,727	-56	484
40 to 44	1,042	1,169	1,463	127	294
45 to 49	886	1,110	1,092	224	-18
50 to 54	817	871	992	54	121
55 to 59	730	742	948	12	206
60 to 64	650	629	717	-21	88
65 to 69	580	561	575	-19	14
70 to 74	501	443	458	-58	15
75 to 79	361	317	339	-44	22
80 to 84	209	203	206	-6	3
85 and over	102	111	150	9	39
Total	13,815	14,857	16,746	1,042	1,889

Population change for Females

Age band	2002	2012	2022	2002-2012	2012-2022
0 to 4	807	935	986	128	51
5 to 9	666	596	812	-70	216
10 to 14	761	598	709	-163	111
15 to 19	759	664	529	-95	-135
20 to 24	1,148	1,097	690	-51	-407
25 to 29	1,299	1,370	1,131	71	-239
30 to 34	1,275	1,411	1,484	136	73
35 to 39	1,140	1,015	1,248	-125	233
40 to 44	1,016	997	1,178	-19	181
45 to 49	777	945	886	168	-59
50 to 54	651	881	905	230	24
55 to 59	670	676	848	6	172
60 to 64	701	537	767	-164	230
65 to 69	743	545	561	-198	16
70 to 74	684	513	425	-171	-88
75 to 79	542	493	394	-49	-99
80 to 84	389	342	307	-47	-35
85 and over	367	298	331	-69	33
Total	14,395	13,913	14,191	-482	278

Sources: Ward population estimates based on Data Zone estimates from National Records of Scotland
Population projections from Glasgow City Council - DRS

DETAIL ON ESTIMATED/PROJECTED POPULATION AND HOUSEHOLD CHANGE
WARD 09 - CALTON

Population change by Age

Age band	2002	2012	2022	2002-2012	2012-2022
0-4	1,048	1,292	2,080	244	788
5-11	1,557	1,244	2,144	-313	900
12-15	1,063	855	818	-208	-37
children	3,668	3,391	5,042	-277	1,651
16-29	4,754	7,557	7,908	2,803	351
30-44	4,678	5,318	9,013	640	3,695
45-64	4,638	5,411	6,174	773	763
age 16-64	14,070	18,286	23,095	4,216	4,809
65-74	2,113	1,665	1,968	-448	303
75-84	1,035	1,121	999	86	-122
85+	279	283	406	4	123
age 65+	3,427	3,069	3,373	-358	304
Total	21,165	24,746	31,510	3,581	6,764

Annual Population change by Component

Component	2002-2007	2007-2012	2002-2012	2012-2022
Births	235	293	264	386
Deaths	328	289	309	272
Natural change	-93	4	-45	114
Net migration a.o.	226	579	403	562
Total change	133	583	358	676

Annual Net Migration by Age

Age band	2002-2007	2007-2012	2002-2012	2012-2022
0 to 15	21	-36	-7	-13
16 to 29	260	546	403	556
30 to 44	-49	17	-16	-21
45 to 64	-1	53	26	42
65+	-4	0	-2	-3
Total	226	579	403	562

Population Change and Household Change by Type

	2002	2012	2022	2002-2012	2012-2022
Total Population	21,165	24,746	31,510	3,581	6,764
in Communal Est.	626	1,187	1,835	561	648
in Households	20,539	23,559	29,675	3,020	6,116
Av. household size	1.914	1.808	1.763	-0.106	-0.046
Total households	10,729	13,029	16,835	2,300	3,806
one adult	5,221	6,625	8,495	1,404	1,870
two adults	2,410	3,136	3,818	726	682
three or more adults	699	773	819	74	46
one adult families	1,208	1,302	1,987	94	685
two+ adults families	1,191	1,193	1,716	2	523

Sources: Ward population estimates based on Data Zone estimates from National Records of Scotland
Household estimates and population and household projections from Glasgow City Council - DRS

DETAIL ON ESTIMATED/PROJECTED POPULATION CHANGE BY SEX AND AGE
WARD 09 - CALTON

Population change for Males

Age band	2002	2012	2022	2002-2012	2012-2022
0 to 4	531	651	1,061	120	410
5 to 9	564	440	807	-124	367
10 to 14	649	533	590	-116	57
15 to 19	754	719	546	-35	-173
20 to 24	879	1,581	1,446	702	-135
25 to 29	894	1,590	2,008	696	418
30 to 34	859	1,201	2,156	342	955
35 to 39	669	818	1,612	149	794
40 to 44	737	842	1,143	105	301
45 to 49	664	772	835	108	63
50 to 54	586	747	872	161	125
55 to 59	522	629	755	107	126
60 to 64	591	559	695	-32	136
65 to 69	518	446	528	-72	82
70 to 74	418	367	397	-51	30
75 to 79	256	261	266	5	5
80 to 84	136	160	181	24	21
85 and over	70	95	132	25	37
Total	10,297	12,411	16,030	2,114	3,619

Population change for Females

Age band	2002	2012	2022	2002-2012	2012-2022
0 to 4	517	641	1,019	124	378
5 to 9	495	435	788	-60	353
10 to 14	648	469	599	-179	130
15 to 19	670	734	603	64	-131
20 to 24	941	1,715	1,526	774	-189
25 to 29	880	1,440	1,957	560	517
30 to 34	865	1,038	1,885	173	847
35 to 39	791	678	1,280	-113	602
40 to 44	757	741	937	-16	196
45 to 49	662	785	675	123	-110
50 to 54	532	756	762	224	6
55 to 59	520	617	810	97	193
60 to 64	561	546	770	-15	224
65 to 69	597	436	585	-161	149
70 to 74	580	416	458	-164	42
75 to 79	387	420	308	33	-112
80 to 84	256	280	244	24	-36
85 and over	209	188	274	-21	86
Total	10,868	12,335	15,480	1,467	3,145

Sources: Ward population estimates based on Data Zone estimates from National Records of Scotland
Population projections from Glasgow City Council - DRS

DETAIL ON ESTIMATED/PROJECTED POPULATION AND HOUSEHOLD CHANGE
WARD 10 - ANDERSTON/CITY

Population change by Age

Age band	2002	2012	2022	2002-2012	2012-2022
0-4	647	860	1,165	213	305
5-11	866	689	934	-177	245
12-15	600	342	401	-258	59
children	2,113	1,891	2,500	-222	609
16-29	10,325	15,054	14,454	4,729	-600
30-44	4,423	6,204	9,191	1,781	2,987
45-64	3,255	3,972	3,833	717	-139
age 16-64	18,003	25,230	27,478	7,227	2,248
65-74	1,355	1,096	968	-259	-128
75-84	930	753	497	-177	-256
85+	236	207	163	-29	-44
age 65+	2,521	2,056	1,628	-465	-428
Total	22,637	29,177	31,606	6,540	2,429

Annual Population change by Component

Component	2002-2007	2007-2012	2002-2012	2012-2022
Births	206	229	217	295
Deaths	228	190	209	157
Natural change	-22	39	9	138
Net migration a.o.	484	807	646	105
Total change	462	846	654	243

Annual Net Migration by Age

Age band	2002-2007	2007-2012	2002-2012	2012-2022
0 to 15	175	-75	50	-129
16 to 29	479	1,009	744	770
30 to 44	-135	-111	-123	-383
45 to 64	-3	13	5	-81
65+	-33	-29	-31	-72
Total	484	807	646	105

Population Change and Household Change by Type

	2002	2012	2022	2002-2012	2012-2022
Total Population	22,637	29,177	31,606	6,540	2,429
in Communal Est.	3,222	5,341	5,725	2,119	384
in Households	19,415	23,836	25,881	4,421	2,045
Av. household size	1.777	1.654	1.595	-0.123	-0.059
Total households	10,925	14,410	16,223	3,485	1,813
one adult	5,896	7,885	8,841	1,989	956
two adults	2,741	4,237	4,777	1,496	540
three or more adults	1,054	1,001	908	-53	-93
one adult families	575	404	547	-171	143
two+ adults families	659	883	1,150	224	267

Sources: Ward population estimates based on Data Zone estimates from National Records of Scotland
Household estimates and population and household projections from Glasgow City Council - DRS

DETAIL ON ESTIMATED/PROJECTED POPULATION CHANGE BY SEX AND AGE
WARD 10 - ANDERSTON/CITY

Population change for Males

Age band	2002	2012	2022	2002-2012	2012-2022
0 to 4	340	420	572	80	152
5 to 9	284	257	352	-27	95
10 to 14	417	231	285	-186	54
15 to 19	937	1,117	866	180	-251
20 to 24	2,481	3,825	3,056	1,344	-769
25 to 29	1,611	2,522	3,061	911	539
30 to 34	1,102	1,700	2,817	598	1,117
35 to 39	836	1,141	1,369	305	228
40 to 44	606	868	963	262	95
45 to 49	495	778	600	283	-178
50 to 54	488	623	540	135	-83
55 to 59	458	475	606	17	131
60 to 64	382	437	474	55	37
65 to 69	362	325	278	-37	-47
70 to 74	274	243	221	-31	-22
75 to 79	225	196	128	-29	-68
80 to 84	115	112	71	-3	-41
85 and over	65	68	55	3	-13
Total	11,478	15,338	16,314	3,860	976

Population change for Females

Age band	2002	2012	2022	2002-2012	2012-2022
0 to 4	307	440	593	133	153
5 to 9	257	259	349	2	90
10 to 14	356	202	249	-154	47
15 to 19	1,344	1,529	1,230	185	-299
20 to 24	2,786	4,065	3,377	1,279	-688
25 to 29	1,318	2,078	2,964	760	886
30 to 34	875	1,257	2,512	382	1,255
35 to 39	546	675	881	129	206
40 to 44	458	563	649	105	86
45 to 49	375	507	354	132	-153
50 to 54	347	472	439	125	-33
55 to 59	357	393	439	36	46
60 to 64	353	287	381	-66	94
65 to 69	362	264	290	-98	26
70 to 74	357	264	179	-93	-85
75 to 79	367	250	162	-117	-88
80 to 84	223	195	136	-28	-59
85 and over	171	139	108	-32	-31
Total	11,159	13,839	15,292	2,680	1,453

Sources: Ward population estimates based on Data Zone estimates from National Records of Scotland
Population projections from Glasgow City Council - DRS

DETAIL ON ESTIMATED/PROJECTED POPULATION AND HOUSEHOLD CHANGE
WARD 11 - HILLHEAD

Population change by Age

Age band	2002	2012	2022	2002-2012	2012-2022
0-4	1,018	1,142	1,294	124	152
5-11	1,264	1,035	1,259	-229	224
12-15	735	573	553	-162	-20
children	3,017	2,750	3,106	-267	356
16-29	9,931	10,860	9,887	929	-973
30-44	5,999	5,761	7,194	-238	1,433
45-64	4,150	4,682	4,241	532	-441
age 16-64	20,080	21,303	21,322	1,223	19
65-74	1,407	1,344	1,574	-63	230
75-84	1,004	939	905	-65	-34
85+	402	367	378	-35	11
age 65+	2,813	2,650	2,857	-163	207
Total	25,910	26,703	27,285	793	582

Annual Population change by Component

Component	2002-2007	2007-2012	2002-2012	2012-2022
Births	247	258	253	290
Deaths	210	194	202	173
Natural change	37	64	51	116
Net migration a.o.	-253	311	29	-58
Total change	-216	375	79	58

Annual Net Migration by Age

Age band	2002-2007	2007-2012	2002-2012	2012-2022
0 to 15	59	-87	-14	-115
16 to 29	88	578	333	471
30 to 44	-307	-149	-228	-303
45 to 64	-68	-22	-45	-76
65+	-25	-9	-17	-34
Total	-253	311	29	-58

Population Change and Household Change by Type

	2002	2012	2022	2002-2012	2012-2022
Total Population	25,910	26,703	27,285	793	582
in Communal Est.	628	599	687	-29	88
in Households	25,282	26,104	26,598	822	494
Av. household size	1.955	1.972	1.908	0.017	-0.065
Total households	12,931	13,235	13,942	304	707
one adult	5,804	5,854	6,258	50	404
two adults	3,546	3,961	4,192	415	231
three or more adults	1,676	1,622	1,468	-54	-154
one adult families	549	449	525	-100	76
two+ adults families	1,356	1,349	1,499	-7	150

Sources: Ward population estimates based on Data Zone estimates from National Records of Scotland
Household estimates and population and household projections from Glasgow City Council - DRS

DETAIL ON ESTIMATED/PROJECTED POPULATION CHANGE BY SEX AND AGE
WARD 11 - HILLHEAD

Population change for Males

Age band	2002	2012	2022	2002-2012	2012-2022
0 to 4	520	548	633	28	85
5 to 9	467	377	457	-90	80
10 to 14	507	387	397	-120	10
15 to 19	733	662	535	-71	-127
20 to 24	2,347	2,590	2,050	243	-540
25 to 29	1,592	1,867	2,007	275	140
30 to 34	1,323	1,307	1,889	-16	582
35 to 39	1,015	994	1,007	-21	13
40 to 44	826	781	686	-45	-95
45 to 49	695	723	461	28	-262
50 to 54	637	584	458	-53	-126
55 to 59	488	554	525	66	-29
60 to 64	409	501	433	92	-68
65 to 69	323	380	389	57	9
70 to 74	281	282	330	1	48
75 to 79	199	232	241	33	9
80 to 84	134	143	145	9	2
85 and over	85	99	90	14	-9
Total	12,581	13,011	12,733	430	-278

Population change for Females

Age band	2002	2012	2022	2002-2012	2012-2022
0 to 4	498	594	661	96	67
5 to 9	363	361	449	-2	88
10 to 14	485	325	387	-160	62
15 to 19	934	717	658	-217	-59
20 to 24	2,999	3,393	2,772	394	-621
25 to 29	1,503	1,789	1,987	286	198
30 to 34	1,171	1,123	1,972	-48	849
35 to 39	900	807	945	-93	138
40 to 44	764	749	695	-15	-54
45 to 49	592	712	556	120	-156
50 to 54	523	608	608	85	0
55 to 59	440	508	631	68	123
60 to 64	366	492	569	126	77
65 to 69	397	365	451	-32	86
70 to 74	406	317	404	-89	87
75 to 79	384	318	294	-66	-24
80 to 84	287	246	225	-41	-21
85 and over	317	268	288	-49	20
Total	13,329	13,692	14,552	363	860

Sources: Ward population estimates based on Data Zone estimates from National Records of Scotland
Population projections from Glasgow City Council - DRS

DETAIL ON ESTIMATED/PROJECTED POPULATION AND HOUSEHOLD CHANGE
WARD 12 - PARTICK WEST

Population change by Age

Age band	2002	2012	2022	2002-2012	2012-2022
0-4	1,248	1,504	1,744	256	240
5-11	1,809	1,622	2,115	-187	493
12-15	1,059	993	895	-66	-98
children	4,116	4,119	4,754	3	635
16-29	7,607	9,029	7,194	1,422	-1,835
30-44	7,570	8,041	9,578	471	1,537
45-64	6,109	7,854	8,509	1,745	655
age 16-64	21,286	24,924	25,281	3,638	357
65-74	2,251	2,164	2,824	-87	660
75-84	1,654	1,465	1,505	-189	40
85+	510	638	700	128	62
age 65+	4,415	4,267	5,029	-148	762
Total	29,817	33,310	35,064	3,493	1,754

Annual Population change by Component

Component	2002-2007	2007-2012	2002-2012	2012-2022
Births	266	331	299	357
Deaths	304	277	291	275
Natural change	-38	54	8	82
Net migration a.o.	117	566	341	94
Total change	79	620	349	175

Annual Net Migration by Age

Age band	2002-2007	2007-2012	2002-2012	2012-2022
0 to 15	22	-35	-7	-55
16 to 29	311	621	466	386
30 to 44	-146	-38	-92	-187
45 to 64	-16	24	4	-23
65+	-55	-6	-30	-28
Total	117	566	341	94

Population Change and Household Change by Type

	2002	2012	2022	2002-2012	2012-2022
Total Population	29,817	33,310	35,064	3,493	1,754
in Communal Est.	509	133	143	-376	10
in Households	29,308	33,177	34,921	3,869	1,744
Av. household size	1.871	1.848	1.787	-0.023	-0.061
Total households	15,666	17,955	19,541	2,289	1,586
one adult	7,565	8,846	9,919	1,281	1,073
two adults	4,099	5,074	5,176	975	102
three or more adults	1,199	1,152	1,130	-47	-22
one adult families	781	789	914	8	125
two+ adults families	2,022	2,094	2,402	72	308

Sources: Ward population estimates based on Data Zone estimates from National Records of Scotland
Household estimates and population and household projections from Glasgow City Council - DRS

DETAIL ON ESTIMATED/PROJECTED POPULATION CHANGE BY SEX AND AGE
WARD 12 - PARTICK WEST

Population change for Males

Age band	2002	2012	2022	2002-2012	2012-2022
0 to 4	619	755	884	136	129
5 to 9	624	562	768	-62	206
10 to 14	719	635	618	-84	-17
15 to 19	805	698	607	-107	-91
20 to 24	1,404	1,709	1,331	305	-378
25 to 29	1,434	1,951	1,625	517	-326
30 to 34	1,412	1,607	1,957	195	350
35 to 39	1,250	1,271	1,546	21	275
40 to 44	1,070	1,271	1,194	201	-77
45 to 49	955	1,146	1,041	191	-105
50 to 54	846	1,041	1,127	195	86
55 to 59	744	896	1,050	152	154
60 to 64	519	768	931	249	163
65 to 69	412	621	744	209	123
70 to 74	493	412	593	-81	181
75 to 79	319	307	420	-12	113
80 to 84	239	239	224	0	-15
85 and over	130	190	208	60	18
Total	13,994	16,079	16,868	2,085	789

Population change for Females

Age band	2002	2012	2022	2002-2012	2012-2022
0 to 4	629	749	860	120	111
5 to 9	608	596	782	-12	186
10 to 14	667	564	638	-103	74
15 to 19	893	696	666	-197	-30
20 to 24	1,811	2,058	1,498	247	-560
25 to 29	1,510	2,175	1,671	665	-504
30 to 34	1,416	1,578	1,901	162	323
35 to 39	1,231	1,144	1,677	-87	533
40 to 44	1,191	1,170	1,303	-21	133
45 to 49	993	1,238	1,032	245	-206
50 to 54	781	1,090	1,108	309	18
55 to 59	702	937	1,195	235	258
60 to 64	569	738	1,025	169	287
65 to 69	655	639	843	-16	204
70 to 74	691	492	644	-199	152
75 to 79	575	501	518	-74	17
80 to 84	521	418	343	-103	-75
85 and over	380	448	492	68	44
Total	15,823	17,231	18,196	1,408	965

Sources: Ward population estimates based on Data Zone estimates from National Records of Scotland
Population projections from Glasgow City Council - DRS

DETAIL ON ESTIMATED/PROJECTED POPULATION AND HOUSEHOLD CHANGE
WARD 13 - GARSCADDEN/SCOTSTOUNHILL

Population change by Age

Age band	2002	2012	2022	2002-2012	2012-2022
0-4	1,666	1,895	1,802	229	-93
5-11	2,391	2,232	2,438	-159	206
12-15	1,381	1,372	1,389	-9	17
children	5,438	5,499	5,629	61	130
16-29	4,733	5,462	4,263	729	-1,199
30-44	6,554	6,327	6,460	-227	133
45-64	6,165	7,564	8,251	1,399	687
age 16-64	17,452	19,353	18,974	1,901	-379
65-74	2,913	2,270	2,609	-643	339
75-84	2,140	1,805	1,524	-335	-281
85+	616	780	833	164	53
age 65+	5,669	4,855	4,966	-814	111
Total	28,559	29,707	29,569	1,148	-138

Annual Population change by Component

Component	2002-2007	2007-2012	2002-2012	2012-2022
Births	355	400	378	378
Deaths	461	409	435	368
Natural change	-106	-8	-57	10
Net migration a.o.	122	222	172	-24
Total change	16	214	115	-14

Annual Net Migration by Age

Age band	2002-2007	2007-2012	2002-2012	2012-2022
0 to 15	-38	-21	-30	-36
16 to 29	117	141	129	-7
30 to 44	50	70	60	12
45 to 64	-12	13	0	-6
65+	5	19	12	13
Total	122	222	172	-24

Population Change and Household Change by Type

	2002	2012	2022	2002-2012	2012-2022
Total Population	28,559	29,707	29,569	1,148	-138
in Communal Est.	322	385	390	63	5
in Households	28,237	29,322	29,179	1,085	-143
Av. household size	2.062	2.094	2.030	0.032	-0.064
Total households	13,692	14,000	14,372	308	372
one adult	5,551	6,071	6,475	520	404
two adults	3,330	3,261	3,168	-69	-93
three or more adults	1,114	1,061	1,047	-53	-14
one adult families	1,299	1,294	1,344	-5	50
two+ adults families	2,398	2,313	2,338	-85	25

Sources: Ward population estimates based on Data Zone estimates from National Records of Scotland
Household estimates and population and household projections from Glasgow City Council - DRS

DETAIL ON ESTIMATED/PROJECTED POPULATION CHANGE BY SEX AND AGE
WARD 13 - GARSCADDEN/SCOTSTOUNHILL

Population change for Males

Age band	2002	2012	2022	2002-2012	2012-2022
0 to 4	875	987	949	112	-38
5 to 9	846	828	940	-18	112
10 to 14	840	848	932	8	84
15 to 19	871	867	793	-4	-74
20 to 24	815	943	740	128	-203
25 to 29	817	1,011	827	194	-184
30 to 34	987	1,096	1,055	109	-41
35 to 39	1,065	899	1,074	-166	175
40 to 44	1,092	1,129	1,095	37	-34
45 to 49	914	1,115	867	201	-248
50 to 54	780	1,071	1,049	291	-22
55 to 59	656	840	1,046	184	206
60 to 64	641	675	961	34	286
65 to 69	662	569	692	-93	123
70 to 74	585	467	519	-118	52
75 to 79	485	384	373	-101	-11
80 to 84	267	288	251	21	-37
85 and over	131	202	248	71	46
Total	13,329	14,219	14,411	890	192

Population change for Females

Age band	2002	2012	2022	2002-2012	2012-2022
0 to 4	791	908	853	117	-55
5 to 9	853	786	796	-67	10
10 to 14	851	784	814	-67	30
15 to 19	875	789	762	-86	-27
20 to 24	840	1,037	697	197	-340
25 to 29	897	1,173	789	276	-384
30 to 34	1,113	1,044	1,088	-69	44
35 to 39	1,220	1,015	1,127	-205	112
40 to 44	1,077	1,144	1,021	67	-123
45 to 49	884	1,195	1,018	311	-177
50 to 54	770	1,066	1,131	296	65
55 to 59	714	876	1,159	162	283
60 to 64	806	726	1,020	-80	294
65 to 69	825	595	787	-230	192
70 to 74	841	639	611	-202	-28
75 to 79	767	628	468	-139	-160
80 to 84	621	505	432	-116	-73
85 and over	485	578	585	93	7
Total	15,230	15,488	15,158	258	-330

Sources: Ward population estimates based on Data Zone estimates from National Records of Scotland
Population projections from Glasgow City Council - DRS

DETAIL ON ESTIMATED/PROJECTED POPULATION AND HOUSEHOLD CHANGE
WARD 14 - DRUMCHAPEL/ANNIESLAND

Population change by Age

Age band	2002	2012	2022	2002-2012	2012-2022
0-4	1,633	1,956	2,026	323	70
5-11	2,527	2,320	2,830	-207	510
12-15	1,659	1,329	1,492	-330	163
children	5,819	5,605	6,348	-214	743
16-29	5,119	5,989	4,335	870	-1,654
30-44	6,146	6,123	7,208	-23	1,085
45-64	5,837	7,056	7,538	1,219	482
age 16-64	17,102	19,168	19,081	2,066	-87
65-74	2,451	2,051	2,378	-400	327
75-84	1,830	1,414	1,326	-416	-88
85+	505	624	608	119	-16
age 65+	4,786	4,089	4,312	-697	223
Total	27,707	28,862	29,741	1,155	879

Annual Population change by Component

Component	2002-2007	2007-2012	2002-2012	2012-2022
Births	336	383	360	396
Deaths	380	367	373	328
Natural change	-43	16	-14	68
Net migration a.o.	64	194	129	20
Total change	21	210	116	88

Annual Net Migration by Age

Age band	2002-2007	2007-2012	2002-2012	2012-2022
0 to 15	-25	-1	-13	-7
16 to 29	102	144	123	35
30 to 44	22	47	35	6
45 to 64	-2	-3	-2	-16
65+	-33	7	-13	2
Total	64	194	129	20

Population Change and Household Change by Type

	2002	2012	2022	2002-2012	2012-2022
Total Population	27,707	28,862	29,741	1,155	879
in Communal Est.	169	241	245	72	4
in Households	27,538	28,621	29,496	1,083	875
Av. household size	2.102	2.093	2.040	-0.009	-0.053
Total households	13,103	13,676	14,459	573	783
one adult	5,319	5,788	6,238	469	450
two adults	2,948	3,083	2,956	135	-127
three or more adults	1,040	1,040	1,009	0	-31
one adult families	1,590	1,617	1,853	27	236
two+ adults families	2,206	2,148	2,403	-58	255

Sources: Ward population estimates based on Data Zone estimates from National Records of Scotland
Household estimates and population and household projections from Glasgow City Council - DRS

DETAIL ON ESTIMATED/PROJECTED POPULATION CHANGE BY SEX AND AGE
WARD 14 - DRUMCHAPEL/ANNIESLAND

Population change for Males

Age band	2002	2012	2022	2002-2012	2012-2022
0 to 4	847	996	1,023	149	27
5 to 9	906	821	1,016	-85	195
10 to 14	1,009	891	990	-118	99
15 to 19	1,072	867	748	-205	-119
20 to 24	869	1,037	699	168	-338
25 to 29	761	1,083	811	322	-272
30 to 34	858	1,050	1,171	192	121
35 to 39	863	839	1,130	-24	291
40 to 44	895	971	1,046	76	75
45 to 49	808	976	858	168	-118
50 to 54	713	843	959	130	116
55 to 59	661	752	928	91	176
60 to 64	564	668	760	104	92
65 to 69	487	514	611	27	97
70 to 74	455	378	474	-77	96
75 to 79	354	285	301	-69	16
80 to 84	233	190	182	-43	-8
85 and over	126	159	161	33	2
Total	12,481	13,320	13,868	839	548

Population change for Females

Age band	2002	2012	2022	2002-2012	2012-2022
0 to 4	786	960	1,003	174	43
5 to 9	883	835	1,025	-48	190
10 to 14	950	771	941	-179	170
15 to 19	983	827	750	-156	-77
20 to 24	986	1,138	718	152	-420
25 to 29	886	1,368	959	482	-409
30 to 34	1,160	1,192	1,335	32	143
35 to 39	1,211	968	1,385	-243	417
40 to 44	1,159	1,103	1,141	-56	38
45 to 49	933	1,194	939	261	-255
50 to 54	771	1,107	1,041	336	-66
55 to 59	733	826	1,075	93	249
60 to 64	654	690	978	36	288
65 to 69	752	630	717	-122	87
70 to 74	757	529	576	-228	47
75 to 79	700	530	490	-170	-40
80 to 84	543	409	353	-134	-56
85 and over	379	465	447	86	-18
Total	15,226	15,542	15,873	316	331

Sources: Ward population estimates based on Data Zone estimates from National Records of Scotland
Population projections from Glasgow City Council - DRS

DETAIL ON ESTIMATED/PROJECTED POPULATION AND HOUSEHOLD CHANGE
WARD 15 - MARYHILL/KELVIN

Population change by Age

Age band	2002	2012	2022	2002-2012	2012-2022
0-4	1,570	1,511	1,789	-59	278
5-11	2,242	1,627	2,203	-615	576
12-15	1,250	1,010	933	-240	-77
children	5,062	4,148	4,925	-914	777
16-29	5,634	6,198	5,793	564	-405
30-44	6,603	5,589	6,440	-1,014	851
45-64	6,254	7,035	6,759	781	-276
age 16-64	18,491	18,822	18,992	331	170
65-74	2,328	2,161	2,602	-167	441
75-84	1,436	1,398	1,462	-38	64
85+	508	557	697	49	140
age 65+	4,272	4,116	4,761	-156	645
Total	27,825	27,086	28,678	-739	1,592

Annual Population change by Component

Component	2002-2007	2007-2012	2002-2012	2012-2022
Births	295	311	303	337
Deaths	360	320	340	301
Natural change	-65	-9	-37	36
Net migration a.o.	-155	82	-37	123
Total change	-220	72	-74	159

Annual Net Migration by Age

Age band	2002-2007	2007-2012	2002-2012	2012-2022
0 to 15	-116	-64	-90	-30
16 to 29	116	175	145	208
30 to 44	-110	-27	-68	-45
45 to 64	-38	-4	-21	-9
65+	-7	2	-3	0
Total	-155	82	-37	123

Population Change and Household Change by Type

	2002	2012	2022	2002-2012	2012-2022
Total Population	27,825	27,086	28,678	-739	1,592
in Communal Est.	954	1,239	1,151	285	-88
in Households	26,871	25,847	27,527	-1,024	1,680
Av. household size	2.035	1.949	1.918	-0.085	-0.031
Total households	13,207	13,259	14,352	52	1,093
one adult	5,694	6,216	6,806	522	590
two adults	3,111	3,145	3,143	34	-2
three or more adults	1,019	982	947	-37	-35
one adult families	1,258	1,165	1,456	-93	291
two+ adults families	2,125	1,751	2,000	-374	249

Sources: Ward population estimates based on Data Zone estimates from National Records of Scotland
Household estimates and population and household projections from Glasgow City Council - DRS

DETAIL ON ESTIMATED/PROJECTED POPULATION CHANGE BY SEX AND AGE
WARD 15 - MARYHILL/KELVIN

Population change for Males

Age band	2002	2012	2022	2002-2012	2012-2022
0 to 4	802	780	930	-22	150
5 to 9	784	592	837	-192	245
10 to 14	809	579	680	-230	101
15 to 19	955	836	560	-119	-276
20 to 24	968	1,088	950	120	-138
25 to 29	913	1,132	1,249	219	117
30 to 34	992	990	1,165	-2	175
35 to 39	1,074	843	1,122	-231	279
40 to 44	1,035	901	857	-134	-44
45 to 49	885	955	711	70	-244
50 to 54	840	889	811	49	-78
55 to 59	747	795	891	48	96
60 to 64	611	730	818	119	88
65 to 69	559	608	672	49	64
70 to 74	442	389	535	-53	146
75 to 79	339	338	384	-1	46
80 to 84	182	218	215	36	-3
85 and over	113	149	233	36	84
Total	13,050	12,812	13,620	-238	808

Population change for Females

Age band	2002	2012	2022	2002-2012	2012-2022
0 to 4	768	731	859	-37	128
5 to 9	802	568	760	-234	192
10 to 14	773	605	658	-168	53
15 to 19	939	888	606	-51	-282
20 to 24	1,153	1,367	1,214	214	-153
25 to 29	1,030	1,180	1,415	150	235
30 to 34	1,152	1,049	1,261	-103	212
35 to 39	1,241	842	1,088	-399	246
40 to 44	1,109	964	947	-145	-17
45 to 49	906	1,075	734	169	-341
50 to 54	826	991	863	165	-128
55 to 59	745	828	1,002	83	174
60 to 64	694	772	929	78	157
65 to 69	720	608	746	-112	138
70 to 74	607	556	649	-51	93
75 to 79	491	486	477	-5	-9
80 to 84	424	356	386	-68	30
85 and over	395	408	464	13	56
Total	14,775	14,274	15,058	-501	784

Sources: Ward population estimates based on Data Zone estimates from National Records of Scotland
Population projections from Glasgow City Council - DRS

DETAIL ON ESTIMATED/PROJECTED POPULATION AND HOUSEHOLD CHANGE
WARD 16 - CANAL

Population change by Age

Age band	2002	2012	2022	2002-2012	2012-2022
0-4	1,455	1,757	2,307	302	550
5-11	2,240	2,014	2,760	-226	746
12-15	1,428	1,249	1,290	-179	41
children	5,123	5,020	6,357	-103	1,337
16-29	7,052	8,367	8,626	1,315	259
30-44	6,593	6,672	7,816	79	1,144
45-64	6,702	7,361	7,955	659	594
age 16-64	20,347	22,400	24,397	2,053	1,997
65-74	2,782	2,607	2,529	-175	-78
75-84	1,716	1,587	1,616	-129	29
85+	518	493	626	-25	133
age 65+	5,016	4,687	4,771	-329	84
Total	30,486	32,107	35,525	1,621	3,418

Annual Population change by Component

Component	2002-2007	2007-2012	2002-2012	2012-2022
Births	320	389	355	437
Deaths	453	421	437	383
Natural change	-133	-32	-83	54
Net migration a.o.	193	297	245	288
Total change	59	265	162	342

Annual Net Migration by Age

Age band	2002-2007	2007-2012	2002-2012	2012-2022
0 to 15	43	-7	18	16
16 to 29	178	265	222	290
30 to 44	-30	6	-12	-33
45 to 64	4	13	8	-1
65+	-3	20	9	16
Total	193	297	245	288

Population Change and Household Change by Type

	2002	2012	2022	2002-2012	2012-2022
Total Population	30,486	32,107	35,525	1,621	3,418
in Communal Est.	1,487	1,824	1,792	337	-32
in Households	28,999	30,283	33,733	1,284	3,450
Av. household size	1.963	1.939	1.926	-0.024	-0.013
Total households	14,772	15,618	17,517	846	1,899
one adult	6,519	7,049	7,820	530	771
two adults	3,472	3,795	3,954	323	159
three or more adults	1,232	1,219	1,248	-13	29
one adult families	1,550	1,607	2,120	57	513
two+ adults families	1,999	1,948	2,375	-51	427

Sources: Ward population estimates based on Data Zone estimates from National Records of Scotland
Household estimates and population and household projections from Glasgow City Council - DRS

DETAIL ON ESTIMATED/PROJECTED POPULATION CHANGE BY SEX AND AGE
WARD 16 - CANAL

Population change for Males

Age band	2002	2012	2022	2002-2012	2012-2022
0 to 4	726	890	1,188	164	298
5 to 9	810	740	1,026	-70	286
10 to 14	871	715	868	-156	153
15 to 19	1,218	1,210	934	-8	-276
20 to 24	1,274	1,585	1,526	311	-59
25 to 29	989	1,372	1,604	383	232
30 to 34	1,054	1,205	1,283	151	78
35 to 39	997	964	1,255	-33	291
40 to 44	916	1,048	1,135	132	87
45 to 49	842	983	932	141	-51
50 to 54	791	932	1,012	141	80
55 to 59	834	798	919	-36	121
60 to 64	740	687	818	-53	131
65 to 69	632	678	653	46	-25
70 to 74	553	546	527	-7	-19
75 to 79	369	362	449	-7	87
80 to 84	227	232	276	5	44
85 and over	120	145	189	25	44
Total	13,963	15,092	16,594	1,129	1,502

Population change for Females

Age band	2002	2012	2022	2002-2012	2012-2022
0 to 4	729	867	1,119	138	252
5 to 9	717	722	973	5	251
10 to 14	881	741	875	-140	134
15 to 19	1,411	1,270	966	-141	-304
20 to 24	1,377	1,776	1,871	399	95
25 to 29	1,172	1,499	2,033	327	534
30 to 34	1,234	1,277	1,571	43	294
35 to 39	1,272	1,056	1,391	-216	335
40 to 44	1,120	1,122	1,181	2	59
45 to 49	950	1,210	1,014	260	-196
50 to 54	860	1,135	1,103	275	-32
55 to 59	836	848	1,147	12	299
60 to 64	849	768	1,010	-81	242
65 to 69	884	737	731	-147	-6
70 to 74	713	646	618	-67	-28
75 to 79	605	579	506	-26	-73
80 to 84	515	414	385	-101	-29
85 and over	398	348	437	-50	89
Total	16,523	17,015	18,931	492	1,916

Sources: Ward population estimates based on Data Zone estimates from National Records of Scotland
Population projections from Glasgow City Council - DRS

DETAIL ON ESTIMATED/PROJECTED POPULATION AND HOUSEHOLD CHANGE
WARD 17 - SPRINGBURN

Population change by Age

Age band	2002	2012	2022	2002-2012	2012-2022
0-4	1,546	1,637	1,510	91	-127
5-11	2,071	1,636	1,603	-435	-33
12-15	1,211	919	795	-292	-124
children	4,828	4,192	3,908	-636	-284
16-29	4,902	4,486	3,304	-416	-1,182
30-44	6,289	4,947	5,083	-1,342	136
45-64	4,647	4,827	4,980	180	153
age 16-64	15,838	14,260	13,367	-1,578	-893
65-74	2,082	1,555	1,249	-527	-306
75-84	1,118	1,088	933	-30	-155
85+	310	312	425	2	113
age 65+	3,510	2,955	2,607	-555	-348
Total	24,176	21,407	19,882	-2,769	-1,525

Annual Population change by Component

Component	2002-2007	2007-2012	2002-2012	2012-2022
Births	421	402	411	366
Deaths	348	281	315	240
Natural change	72	120	96	125
Net migration a.o.	-474	-272	-373	-278
Total change	-402	-152	-277	-153

Annual Net Migration by Age

Age band	2002-2007	2007-2012	2002-2012	2012-2022
0 to 15	-203	-197	-200	-181
16 to 29	47	72	60	49
30 to 44	-226	-72	-149	-73
45 to 64	-85	-67	-76	-68
65+	-7	-8	-7	-5
Total	-474	-272	-373	-278

Population Change and Household Change by Type

	2002	2012	2022	2002-2012	2012-2022
Total Population	24,176	21,407	19,882	-2,769	-1,525
in Communal Est.	200	217	231	17	14
in Households	23,976	21,190	19,651	-2,786	-1,539
Av. household size	1.914	1.970	1.890	0.056	-0.080
Total households	12,526	10,756	10,397	-1,770	-359
one adult	6,019	5,178	5,203	-841	25
two adults	2,452	2,148	2,021	-304	-127
three or more adults	648	602	545	-46	-57
one adult families	1,622	1,400	1,327	-222	-73
two+ adults families	1,785	1,428	1,301	-357	-127

Sources: Ward population estimates based on Data Zone estimates from National Records of Scotland
Household estimates and population and household projections from Glasgow City Council - DRS

DETAIL ON ESTIMATED/PROJECTED POPULATION CHANGE BY SEX AND AGE
WARD 17 - SPRINGBURN

Population change for Males

Age band	2002	2012	2022	2002-2012	2012-2022
0 to 4	808	857	784	49	-73
5 to 9	719	613	599	-106	-14
10 to 14	734	583	564	-151	-19
15 to 19	817	604	494	-213	-110
20 to 24	832	761	538	-71	-223
25 to 29	881	858	671	-23	-187
30 to 34	1,051	877	856	-174	-21
35 to 39	1,084	731	840	-353	109
40 to 44	905	773	744	-132	-29
45 to 49	694	800	564	106	-236
50 to 54	562	649	613	87	-36
55 to 59	555	504	635	-51	131
60 to 64	533	401	477	-132	76
65 to 69	507	329	344	-178	15
70 to 74	422	337	253	-85	-84
75 to 79	283	265	190	-18	-75
80 to 84	131	174	171	43	-3
85 and over	56	91	144	35	53
Total	11,574	10,207	9,481	-1,367	-726

Population change for Females

Age band	2002	2012	2022	2002-2012	2012-2022
0 to 4	738	780	726	42	-54
5 to 9	753	593	551	-160	-42
10 to 14	732	517	504	-215	-13
15 to 19	805	613	492	-192	-121
20 to 24	870	889	528	19	-361
25 to 29	1,041	1,010	761	-31	-249
30 to 34	1,258	954	983	-304	29
35 to 39	1,114	725	903	-389	178
40 to 44	877	887	757	10	-130
45 to 49	588	853	574	265	-279
50 to 54	543	730	778	187	48
55 to 59	534	457	746	-77	289
60 to 64	638	433	593	-205	160
65 to 69	606	410	339	-196	-71
70 to 74	547	479	313	-68	-166
75 to 79	399	373	278	-26	-95
80 to 84	305	276	294	-29	18
85 and over	254	221	281	-33	60
Total	12,602	11,200	10,401	-1,402	-799

Sources: Ward population estimates based on Data Zone estimates from National Records of Scotland
Population projections from Glasgow City Council - DRS

DETAIL ON ESTIMATED/PROJECTED POPULATION AND HOUSEHOLD CHANGE
WARD 18 - EAST CENTRE

Population change by Age

Age band	2002	2012	2022	2002-2012	2012-2022
0-4	1,227	1,536	2,002	309	466
5-11	1,960	1,688	2,455	-272	767
12-15	1,269	1,041	1,002	-228	-39
children	4,456	4,265	5,459	-191	1,194
16-29	5,549	7,565	5,260	2,016	-2,305
30-44	6,634	6,466	9,510	-168	3,044
45-64	6,353	6,802	6,951	449	149
age 16-64	18,536	20,833	21,721	2,297	888
65-74	3,122	2,377	2,347	-745	-30
75-84	1,969	1,853	1,511	-116	-342
85+	653	664	802	11	138
age 65+	5,744	4,894	4,660	-850	-234
Total	28,736	29,992	31,840	1,256	1,848

Annual Population change by Component

Component	2002-2007	2007-2012	2002-2012	2012-2022
Births	271	354	312	396
Deaths	460	422	441	366
Natural change	-189	-68	-129	29
Net migration a.o.	157	352	254	155
Total change	-32	284	126	185

Annual Net Migration by Age

Age band	2002-2007	2007-2012	2002-2012	2012-2022
0 to 15	4	-39	-18	-32
16 to 29	322	405	364	264
30 to 44	-107	-2	-54	-46
45 to 64	-51	-17	-34	-29
65+	-11	5	-3	-1
Total	157	352	254	155

Population Change and Household Change by Type

	2002	2012	2022	2002-2012	2012-2022
Total Population	28,736	29,992	31,840	1,256	1,848
in Communal Est.	935	1,470	1,531	535	61
in Households	27,801	28,522	30,309	721	1,787
Av. household size	1.996	1.901	1.871	-0.095	-0.029
Total households	13,927	15,006	16,196	1,079	1,190
one adult	6,236	6,836	7,408	600	572
two adults	3,601	4,052	3,926	451	-126
three or more adults	1,111	1,105	1,011	-6	-94
one adult families	1,135	1,309	1,696	174	387
two+ adults families	1,844	1,704	2,155	-140	451

Sources: Ward population estimates based on Data Zone estimates from National Records of Scotland
Household estimates and population and household projections from Glasgow City Council - DRS

DETAIL ON ESTIMATED/PROJECTED POPULATION CHANGE BY SEX AND AGE
WARD 18 - EAST CENTRE

Population change for Males

Age band	2002	2012	2022	2002-2012	2012-2022
0 to 4	643	784	1,033	141	249
5 to 9	670	616	912	-54	296
10 to 14	826	598	678	-228	80
15 to 19	794	682	546	-112	-136
20 to 24	1,124	1,517	784	393	-733
25 to 29	1,028	1,810	1,347	782	-463
30 to 34	1,108	1,434	2,057	326	623
35 to 39	1,119	1,011	1,757	-108	746
40 to 44	1,093	969	1,308	-124	339
45 to 49	875	968	900	93	-68
50 to 54	725	924	811	199	-113
55 to 59	726	742	811	16	69
60 to 64	714	610	792	-104	182
65 to 69	698	556	591	-142	35
70 to 74	591	492	433	-99	-59
75 to 79	433	383	331	-50	-52
80 to 84	255	258	231	3	-27
85 and over	161	161	197	0	36
Total	13,583	14,515	15,519	932	1,004

Population change for Females

Age band	2002	2012	2022	2002-2012	2012-2022
0 to 4	584	752	969	168	217
5 to 9	683	606	877	-77	271
10 to 14	748	633	739	-115	106
15 to 19	842	745	653	-97	-92
20 to 24	1,090	1,437	912	347	-525
25 to 29	973	1,650	1,269	677	-381
30 to 34	1,147	1,241	1,717	94	476
35 to 39	1,135	863	1,560	-272	697
40 to 44	1,032	948	1,111	-84	163
45 to 49	864	1,063	783	199	-280
50 to 54	799	1,000	906	201	-94
55 to 59	780	789	1,015	9	226
60 to 64	870	706	933	-164	227
65 to 69	908	657	718	-251	61
70 to 74	925	672	605	-253	-67
75 to 79	709	642	502	-67	-140
80 to 84	572	570	447	-2	-123
85 and over	492	503	605	11	102
Total	15,153	15,477	16,321	324	844

Sources: Ward population estimates based on Data Zone estimates from National Records of Scotland
Population projections from Glasgow City Council - DRS

DETAIL ON ESTIMATED/PROJECTED POPULATION AND HOUSEHOLD CHANGE
WARD 19 - SHETTLESTON

Population change by Age

Age band	2002	2012	2022	2002-2012	2012-2022
0-4	1,372	1,351	1,585	-21	234
5-11	2,344	1,553	1,981	-791	428
12-15	1,317	1,082	956	-235	-126
children	5,033	3,986	4,522	-1,047	536
16-29	4,316	4,904	4,139	588	-765
30-44	6,093	4,850	5,936	-1,243	1,086
45-64	6,529	7,272	7,101	743	-171
age 16-64	16,938	17,026	17,176	88	150
65-74	2,682	2,421	2,733	-261	312
75-84	1,584	1,660	1,675	76	15
85+	477	558	758	81	200
age 65+	4,743	4,639	5,166	-104	527
Total	26,714	25,651	26,864	-1,063	1,213

Annual Population change by Component

Component	2002-2007	2007-2012	2002-2012	2012-2022
Births	265	282	273	301
Deaths	388	339	364	322
Natural change	-123	-58	-90	-21
Net migration a.o.	-64	32	-16	142
Total change	-187	-26	-106	121

Annual Net Migration by Age

Age band	2002-2007	2007-2012	2002-2012	2012-2022
0 to 15	-86	-37	-61	-10
16 to 29	63	81	72	123
30 to 44	-26	-19	-23	8
45 to 64	-20	4	-8	12
65+	5	3	4	9
Total	-64	32	-16	142

Population Change and Household Change by Type

	2002	2012	2022	2002-2012	2012-2022
Total Population	26,714	25,651	26,864	-1,063	1,213
in Communal Est.	328	250	288	-78	38
in Households	26,386	25,401	26,576	-985	1,175
Av. household size	2.124	1.998	1.944	-0.125	-0.055
Total households	12,424	12,711	13,673	287	962
one adult	4,916	5,585	6,164	669	579
two adults	2,982	3,034	3,095	52	61
three or more adults	1,081	1,191	1,132	110	-59
one adult families	1,167	1,247	1,482	80	235
two+ adults families	2,278	1,654	1,800	-624	146

Sources: Ward population estimates based on Data Zone estimates from National Records of Scotland
Household estimates and population and household projections from Glasgow City Council - DRS

DETAIL ON ESTIMATED/PROJECTED POPULATION CHANGE BY SEX AND AGE
WARD 19 - SHETTLESTON

Population change for Males

Age band	2002	2012	2022	2002-2012	2012-2022
0 to 4	699	694	812	-5	118
5 to 9	862	589	712	-273	123
10 to 14	845	630	655	-215	25
15 to 19	831	763	544	-68	-219
20 to 24	787	894	630	107	-264
25 to 29	664	869	955	205	86
30 to 34	867	801	1,159	-66	358
35 to 39	991	669	941	-322	272
40 to 44	1,009	857	763	-152	-94
45 to 49	937	964	666	27	-298
50 to 54	817	1,002	873	185	-129
55 to 59	770	892	947	122	55
60 to 64	681	696	901	15	205
65 to 69	611	646	749	35	103
70 to 74	510	485	565	-25	80
75 to 79	350	388	449	38	61
80 to 84	232	249	270	17	21
85 and over	121	162	251	41	89
Total	12,584	12,250	12,842	-334	592

Population change for Females

Age band	2002	2012	2022	2002-2012	2012-2022
0 to 4	673	657	773	-16	116
5 to 9	783	553	696	-230	143
10 to 14	832	563	658	-269	95
15 to 19	797	709	554	-88	-155
20 to 24	797	1,026	658	229	-368
25 to 29	779	943	1,014	164	71
30 to 34	996	853	1,237	-143	384
35 to 39	1,121	680	951	-441	271
40 to 44	1,109	990	885	-119	-105
45 to 49	975	1,023	693	48	-330
50 to 54	785	1,053	988	268	-65
55 to 59	856	906	1,027	50	121
60 to 64	708	736	1,006	28	270
65 to 69	759	687	801	-72	114
70 to 74	802	603	618	-199	15
75 to 79	571	544	543	-27	-1
80 to 84	431	479	413	48	-66
85 and over	356	396	507	40	111
Total	14,130	13,401	14,022	-729	621

Sources: Ward population estimates based on Data Zone estimates from National Records of Scotland
Population projections from Glasgow City Council - DRS

DETAIL ON ESTIMATED/PROJECTED POPULATION AND HOUSEHOLD CHANGE
WARD 20 - BAILLIESTON

Population change by Age

Age band	2002	2012	2022	2002-2012	2012-2022
0-4	1,925	1,832	2,049	-93	217
5-11	3,264	2,453	2,851	-811	398
12-15	1,918	1,730	1,587	-188	-143
children	7,107	6,015	6,487	-1,092	472
16-29	5,696	6,019	5,741	323	-278
30-44	8,251	6,250	6,906	-2,001	656
45-64	7,454	9,235	9,516	1,781	281
age 16-64	21,401	21,504	22,163	103	659
65-74	2,794	2,818	3,267	24	449
75-84	1,485	1,755	1,948	270	193
85+	356	522	864	166	342
age 65+	4,635	5,095	6,079	460	984
Total	33,143	32,614	34,729	-529	2,115

Annual Population change by Component

Component	2002-2007	2007-2012	2002-2012	2012-2022
Births	339	356	348	367
Deaths	342	326	334	326
Natural change	-3	30	14	41
Net migration a.o.	-80	-53	-67	170
Total change	-83	-23	-53	212

Annual Net Migration by Age

Age band	2002-2007	2007-2012	2002-2012	2012-2022
0 to 15	-21	28	3	75
16 to 29	-50	-44	-47	51
30 to 44	4	-2	1	53
45 to 64	4	-18	-7	-1
65+	-16	-18	-17	-9
Total	-80	-53	-67	170

Population Change and Household Change by Type

	2002	2012	2022	2002-2012	2012-2022
Total Population	33,143	32,614	34,729	-529	2,115
in Communal Est.	142	153	202	11	49
in Households	33,001	32,461	34,527	-540	2,066
Av. household size	2.420	2.290	2.203	-0.130	-0.087
Total households	13,634	14,173	15,671	539	1,498
one adult	3,931	4,772	5,565	841	793
two adults	3,482	3,630	3,966	148	336
three or more adults	1,511	1,576	1,628	65	52
one adult families	1,379	1,441	1,660	62	219
two+ adults families	3,331	2,754	2,852	-577	98

Sources: Ward population estimates based on Data Zone estimates from National Records of Scotland
Household estimates and population and household projections from Glasgow City Council - DRS

DETAIL ON ESTIMATED/PROJECTED POPULATION CHANGE BY SEX AND AGE
WARD 20 - BAILLIESTON

Population change for Males

Age band	2002	2012	2022	2002-2012	2012-2022
0 to 4	962	932	1,052	-30	120
5 to 9	1,201	860	1,016	-341	156
10 to 14	1,265	1,013	1,070	-252	57
15 to 19	1,181	1,161	909	-20	-252
20 to 24	1,014	1,200	951	186	-249
25 to 29	864	893	1,158	29	265
30 to 34	1,086	862	1,309	-224	447
35 to 39	1,364	825	1,003	-539	178
40 to 44	1,268	1,125	981	-143	-144
45 to 49	1,063	1,336	883	273	-453
50 to 54	975	1,206	1,109	231	-97
55 to 59	852	977	1,275	125	298
60 to 64	677	816	1,103	139	287
65 to 69	692	739	847	47	108
70 to 74	522	510	651	-12	141
75 to 79	363	434	504	71	70
80 to 84	203	268	288	65	20
85 and over	104	151	292	47	141
Total	15,656	15,308	16,401	-348	1,093

Population change for Females

Age band	2002	2012	2022	2002-2012	2012-2022
0 to 4	963	900	997	-63	97
5 to 9	1,067	806	949	-261	143
10 to 14	1,192	1,037	994	-155	-43
15 to 19	1,083	1,049	842	-34	-207
20 to 24	1,015	1,170	1,066	155	-104
25 to 29	996	1,013	1,224	17	211
30 to 34	1,442	1,001	1,423	-441	422
35 to 39	1,647	1,000	1,140	-647	140
40 to 44	1,444	1,437	1,050	-7	-387
45 to 49	1,079	1,526	985	447	-541
50 to 54	1,023	1,387	1,382	364	-5
55 to 59	901	1,037	1,473	136	436
60 to 64	884	950	1,306	66	356
65 to 69	825	837	944	12	107
70 to 74	755	732	825	-23	93
75 to 79	540	623	655	83	32
80 to 84	379	430	501	51	71
85 and over	252	371	572	119	201
Total	17,487	17,306	18,328	-181	1,022

Sources: Ward population estimates based on Data Zone estimates from National Records of Scotland
Population projections from Glasgow City Council - DRS

DETAIL ON ESTIMATED/PROJECTED POPULATION AND HOUSEHOLD CHANGE
WARD 21 - NORTH EAST

Population change by Age

Age band	2002	2012	2022	2002-2012	2012-2022
0-4	2,233	2,346	2,703	113	357
5-11	3,584	2,797	3,530	-787	733
12-15	2,152	1,708	1,916	-444	208
children	7,969	6,851	8,149	-1,118	1,298
16-29	6,230	6,439	6,191	209	-248
30-44	8,427	6,943	8,799	-1,484	1,856
45-64	7,010	8,957	10,230	1,947	1,273
age 16-64	21,667	22,339	25,220	672	2,881
65-74	2,626	2,383	3,163	-243	780
75-84	1,278	1,463	1,527	185	64
85+	386	466	622	80	156
age 65+	4,290	4,312	5,312	22	1,000
Total	33,926	33,502	38,681	-424	5,179

Annual Population change by Component

Component	2002-2007	2007-2012	2002-2012	2012-2022
Births	424	458	441	488
Deaths	397	353	375	339
Natural change	27	105	66	149
Net migration a.o.	-287	71	-108	369
Total change	-260	176	-42	518

Annual Net Migration by Age

Age band	2002-2007	2007-2012	2002-2012	2012-2022
0 to 15	-135	-4	-69	59
16 to 29	-46	-1	-24	131
30 to 44	-88	58	-15	129
45 to 64	-43	38	-3	59
65+	25	-20	2	-10
Total	-287	71	-108	369

Population Change and Household Change by Type

	2002	2012	2022	2002-2012	2012-2022
Total Population	33,926	33,502	38,681	-424	5,179
in Communal Est.	410	402	491	-8	89
in Households	33,516	33,100	38,190	-416	5,090
Av. household size	2.395	2.333	2.249	-0.062	-0.084
Total households	13,995	14,187	16,979	192	2,792
one adult	4,211	4,715	5,895	504	1,180
two adults	3,204	3,301	3,888	97	587
three or more adults	1,359	1,545	1,700	186	155
one adult families	1,929	1,852	2,307	-77	455
two+ adults families	3,292	2,774	3,189	-518	415

Sources: Ward population estimates based on Data Zone estimates from National Records of Scotland
Household estimates and population and household projections from Glasgow City Council - DRS

DETAIL ON ESTIMATED/PROJECTED POPULATION CHANGE BY SEX AND AGE
WARD 21 - NORTH EAST

Population change for Males

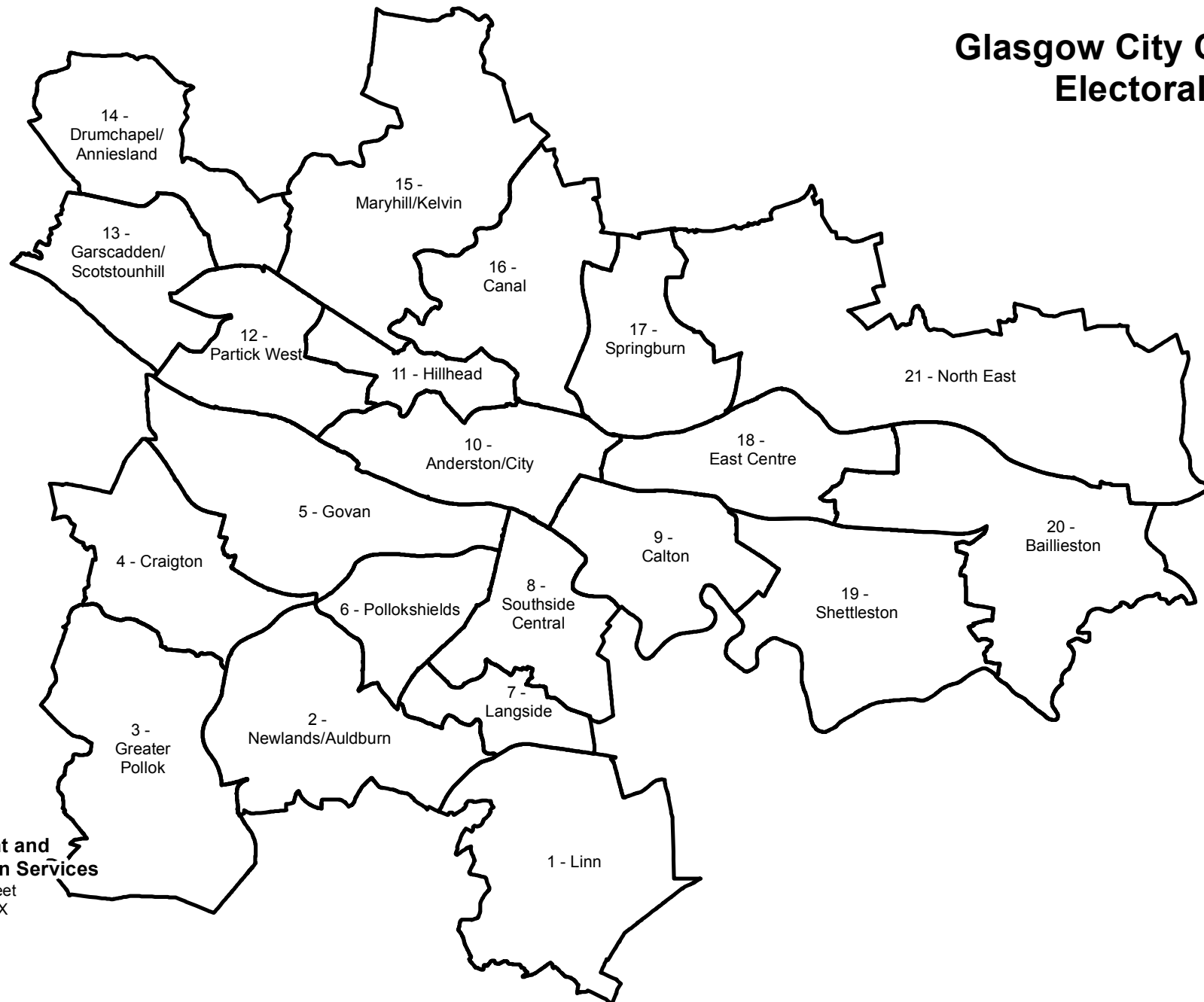
Age band	2002	2012	2022	2002-2012	2012-2022
0 to 4	1,141	1,192	1,381	51	189
5 to 9	1,278	1,032	1,266	-246	234
10 to 14	1,442	996	1,276	-446	280
15 to 19	1,307	1,221	1,064	-86	-157
20 to 24	1,077	1,151	953	74	-198
25 to 29	914	1,080	1,293	166	213
30 to 34	1,176	1,033	1,467	-143	434
35 to 39	1,319	983	1,401	-336	418
40 to 44	1,175	1,112	1,227	-63	115
45 to 49	1,014	1,236	1,108	222	-128
50 to 54	815	1,166	1,205	351	39
55 to 59	722	953	1,264	231	311
60 to 64	665	810	1,134	145	324
65 to 69	627	607	877	-20	270
70 to 74	493	433	638	-60	205
75 to 79	312	340	376	28	36
80 to 84	185	195	212	10	17
85 and over	72	120	169	48	49
Total	15,734	15,660	18,311	-74	2,651

Population change for Females

Age band	2002	2012	2022	2002-2012	2012-2022
0 to 4	1,092	1,154	1,322	62	168
5 to 9	1,203	1,016	1,222	-187	206
10 to 14	1,292	1,003	1,223	-289	220
15 to 19	1,230	1,048	1,008	-182	-40
20 to 24	1,077	1,213	1,002	136	-211
25 to 29	1,146	1,184	1,330	38	146
30 to 34	1,598	1,236	1,754	-362	518
35 to 39	1,622	1,140	1,542	-482	402
40 to 44	1,537	1,439	1,408	-98	-31
45 to 49	1,146	1,555	1,221	409	-334
50 to 54	946	1,376	1,467	430	91
55 to 59	845	1,020	1,520	175	500
60 to 64	857	841	1,311	-16	470
65 to 69	780	709	935	-71	226
70 to 74	726	634	713	-92	79
75 to 79	454	555	531	101	-24
80 to 84	327	373	408	46	35
85 and over	314	346	453	32	107
Total	18,192	17,842	20,370	-350	2,528

Sources: Ward population estimates based on Data Zone estimates from National Records of Scotland
Population projections from Glasgow City Council - DRS

Glasgow City Council Electoral Wards



Development and Regeneration Services

231 George Street
Glasgow G1 1RX

*Executive Director
Richard Brown*