

SECTION 11 NOTICES BY RSL				2017/2018
RSL	1st Quarter No	2nd Quarter No	3rd Quarter No	4th Quarter No
Ardenglen HA	1	3	3	2
Arklet	0	0	0	0
Bield	0	0	0	0
Blairtumnock HA	0	2	3	2
Blochairn HA	0	0	0	1
Broomhouse HA	0	0	0	0
Cadder HA	2	1	3	2
Cairn HA	0	0	0	0
Calvay HA	1	4	0	4
Cassiltoun HA	1	4	6	7
Cathcart HA	0	0	1	2
Cernach HA	2	3	6	6
Charing Cross HA	1	1	0	1
Copperworks HA	0	1	0	1
Craigdale HA	1	0	0	0
Cube HA	16	17	5	14
Drumchapel HA	2	0	2	4
Easthall Park HA	0	3	2	2
Elderpark HA	4	5	6	8
FACT HA	0	0	0	0
Gardeeen HA	1	1	0	0
GHA	186	155	87	208
Glasgow West HA	0	2	0	4
Glen Oaks HA	10	7	2	13
Govan HA	3	9	5	12
Govanhill HA	1	4	2	8
Hawthorn Co-op	2	0	2	4
Hillhead HA	0	0	0	0
Home in Scotland	3	6	0	3
Horizon HA	0	1	0	0
Kendoon HA	0	0	1	2
Kingsridge Cleddans HA	0	0	1	1
Link HA	0	0	0	1
Linthouse HA	0	2	3	3
Lochfield Park	0	1	0	0
Loretto HA	4	2	1	1
Lowther Homes	0	3	0	0
Maryhill HA	22	14	6	12
Milnbank HA	10	7	3	6
Molendinar Park HA	2	3	3	2
New Gorbals HA	0	0	1	2
NG Homes	17	21	16	40
Northview HA	7	1	0	5
Parkhead HA	10	5	10	18
Partick HA	2	2	3	1
Pineview HA	3	3	1	0
Provanhall HA	0	0	0	0
Queens Cross HA	6	13	4	11
Reidvale HA	0	0	0	2
Rosehill HA	1	1	2	2
Ruchazie HA	0	0	0	0
Sanctuary HA	5	10	4	8
Scottish Veterans	0	0	0	0
Shettleston HA	7	14	0	8
Southside HA	15	22	10	22
Spireview HA	1	0	0	4
Strathclyde (Camphill) Housing Society	0	0	0	0
Tenants First Housing Co-op	0	0	0	0
Thenue HA	9	5	4	4
Thistle HA	1	1	1	1
Tollcross HA	10	19	6	16
Trust HA	0	0	0	0
Wellhouse HA	0	1	0	3
West of Scotalnd HA	1	5	2	4
Whiteinch & Scotstoun HA	2	3	0	8
Yoker HA	3	4	2	6
Yorkhill	0	0	0	1
<b>TOTAL</b>	<b>375</b>	<b>391</b>	<b>219</b>	<b>502</b>

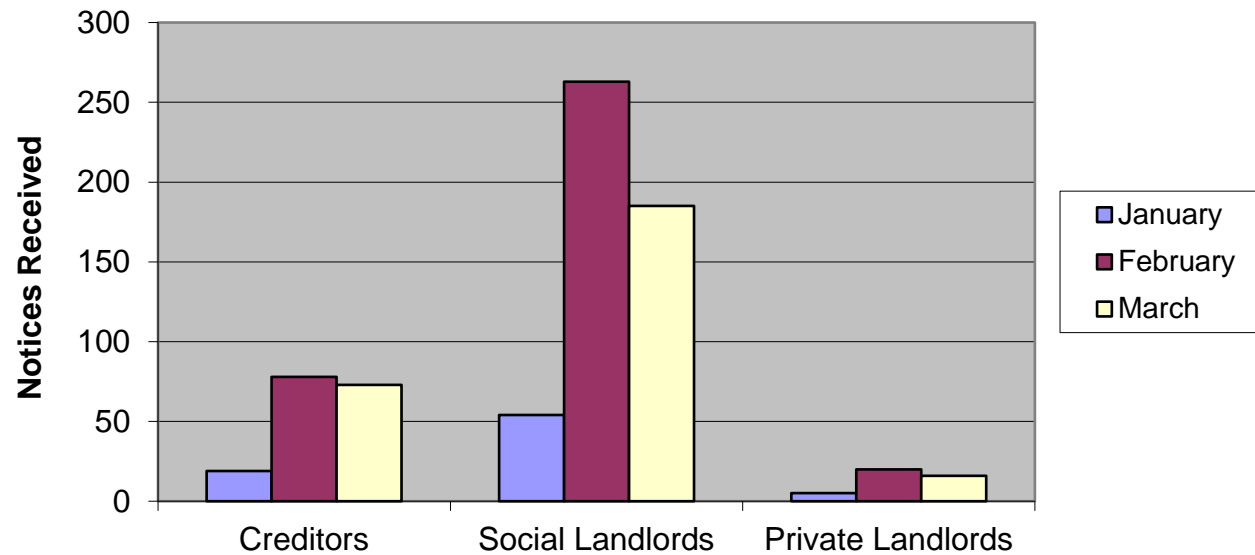
SECTION 11 NOTICES BY LENDER			2017/2018	
Lender	1st Quarter No	2nd Quarter No	3rd Quarter No	4th Quarter No
AIB Group	0	0	1	0
Allied Irish Bank	0	0	0	0
Alliance & Leicester Plc	0	0	0	0
Bank of Ireland	3	1	1	1
Bank of Scotland Plc	46	46	17	37
Barclays Bank Plc	3	2	3	5
Bradford & Bingley	1	0	1	1
Century Building Society	0	0	0	0
Chelsea Building Society	1	0	0	0
Clydesdale Bank Plc	1	1	1	0
Co-operative Bank	2	4	3	7
Coventry Building Society	1	1	1	1
Dunfermline Building Society	0	0	0	0
Halifax plc	0	0	0	0
HSBC Bank Plc	0	0	0	0
Irish Nationwide	0	0	0	0
JP Morgan Chase	0	0	0	0
Leeds Building Society	3	0	0	3
London Scottish Bank	0	0	0	0
National Westminster Bank	3	2	2	4
Nationwide Building Society	5	2	2	8
Northern Rock Plc	4	8	6	14
RBS	5	4	7	6
Santander UK	10	10	5	13
Skipton Building Society	0	0	1	0
Standard Life	0	0	0	0
Teachers Building Society	0	0	0	0
The Woolwich	0	0	0	0
TSB	16	5	6	7
Ulster Bank	0	0	0	0
Virgin Money	2	0	0	2
Yorkshire Building Society	0	0	0	0
<b>Total High Street Lenders</b>	<b>106</b>	<b>86</b>	<b>57</b>	<b>109</b>
Accord Mortgages Ltd	0	0	0	0
Adam & Company	0	0	0	0
Advantage	0	0	0	0
Airdrie Saving Bank	0	3	0	0
Alba 2013 Plc	0	0	0	0
Albion Residential Ltd	0	0	0	0
Aldermore Bank Plc	0	0	0	0
Amber Home Loans	0	0	0	2
Amicus Finance	0	0	0	0
Arbuthnot Latham & Co	0	0	0	0
ARIM	0	0	0	0
Arrow Global	2	1	1	1
Aviva Equity Release	0	0	0	1
Beneficial Bank	0	0	0	0
Black Horse Ltd	0	0	0	0
Bleiman Finance	2	1	1	1
Bridging Loans Ltd	0	0	0	0
Bridging Finance Ltd	0	0	0	0
Britannica Li Sarl	0	0	0	0
Central Trust Ltd	0	1	0	1
Cheltenham & Gloucester Plc	0	0	0	0
Cheshire Mortgage Co-op	0	0	0	0
Citifinancial Europe Plc	0	0	0	0
CT Capital	0	0	0	0
Commercial First Business Ltd	0	0	0	0
Co-operative Insurance Society Ltd	0	0	0	0
DB UK Bank Ltd	0	0	0	0
Egg Banking	0	0	0	0
Elderbridge Ltd	0	0	0	1
Endeavor Personal Finance Ltd	0	0	0	0
Engage Credit Ltd	0	0	0	0
Eurosail UK 2007	0	0	0	0
FBSE Finance	0	0	0	0
Finsbury Park Mortgage Funding Ltd	0	0	0	0
First European Securities Ltd	0	0	0	0
Firstplus Financial Group	0	0	0	0
Future Mortgages	0	0	0	0
GE Money	0	0	0	0
Gemini Funding Ltd	0	0	0	0
Glasgow Credit Union	0	0	0	0
Godiva Mortgages	0	0	0	0
Habib Bank	0	0	0	0
Harpmanor Ltd	0	0	0	0
HFC Bank Ltd	0	0	0	0
Home Select Finance Ltd	1	0	0	0
Household Mortgage Co-op	0	0	0	0

IDEM Capital Securities Ltd	0	2	0	0
I Group UK Loans Ltd	0	0	0	0
ITL Mortgages Ltd	0	0	0	0
Just Retirement Ltd	0	0	0	0
KBC Bank Ireland	0	0	0	0
KBC Homeloans	0	0	0	0
Kensington Mortgage Company	1	0	0	1
Lakehouse Mortgages Ltd	0	0	0	0
Lancashire Mortgage Co-op	0	0	0	0
Landmark Mortgages	7	6	1	14
Loan Logics	0	0	1	0
Lothian Homes Ltd	0	0	0	0
London Scottish Finance	0	0	0	0
Lowry Capital Ltd	0	0	0	0
LSF VII Bonette Investments	0	0	0	0
Marlborough Loans Ltd	0	0	0	0
Mars Capital Finance	0	0	0	1
Melbourne Mortgages	0	0	0	0
Morag Finance Ltd	0	0	0	1
Morgan Stanley Bank International Ltd	2	1	0	3
Mortgages Plc	0	0	0	0
Mortgage Agency Services Number 2	0	0	0	0
Mortgage Express	6	4	3	3
Mortgage Express Number 2	0	0	0	0
Mortgage Funding 2008	0	0	0	0
Mortgage Title Resolutions Ltd	0	0	0	0
Mortgage Trust Ltd	0	0	0	0
Mortgages 1 Ltd	0	1	1	4
Mortgages 2 Ltd	0	1	0	0
Mortgages 5 Ltd	0	0	0	0
Nemo Personal Finance	0	0	1	0
Newcastle Building Society	0	0	0	0
New Life Mortgages Funding Ltd	0	0	0	0
North Yorkshire Mortgages	0	0	0	0
Oakwood Homeloans Ltd	0	0	0	0
Ocelot Resolutions Ltd	0	0	0	0
Onesavings Bank Plc	0	0	0	0
OCWEN 2 Ltd	0	0	0	0
Paragon Personal Finance Ltd	0	0	1	0
Paragon Mortgages Ltd	1	0	0	0
Paratus AMC Ltd	1	1	1	2
Pepper UK Ltd	6	2	0	0
Picture Homeloans	0	0	0	1
Platform Funding Ltd	3	3	1	1
Preferred Mortgages Ltd	1	0	1	2
Premier Burrell Ltd	0	0	0	0
Prestige Finance Ltd	2	0	0	3
Prime Credit 5	1	0	1	0
Promontoria Ltd	5	2	0	1
Redstone Mortgages	1	0	0	2
Rooftop Mortgages Ltd	0	0	0	2
Sancopia Portfolios	0	0	0	0
Saxon Residential	0	0	0	0
SBS Mortgages	0	0	0	0
Scottish Building Society	2	0	0	0
Scottish Prudential Investment Ltd	0	0	0	0
Scotswest	0	0	0	0
Scottish Widows Bank	0	0	1	1
Shawbrook Bank Ltd	0	1	0	0
Skye Loans	2	2	0	3
Southern Pacific Mortgage Ltd	2	2	1	3
Southern Pacific Securities 05-2 Plc	0	0	0	0
Strathcrown Ltd	0	0	0	0
Swift 1st Ltd	1	0	0	0
Swift Advances	0	0	0	0
Target Loans	0	0	0	0
TFS Loans	1	0	0	0
The One Account	0	0	0	1
The Mortgage Business	1	0	0	1
The Mortgage Works	2	1	1	0
TIUTA International	0	0	0	0
Topaz Finance	0	0	0	1
Together Commercial Financial Ltd	0	0	0	2
Trillium Mortgages Ltd	0	0	0	0
Tulip Mortgages Ltd	0	0	0	0
UCB Home Loans	2	0	1	0
Wave lending	0	0	0	0
Webb Resolutions	0	0	0	0
West Bromwich Mortgage Company	1	1	0	0
West Register Ltd	0	0	0	0
Westfoot Investments	0	0	0	0
White Label Loans	0	0	0	1

Total Other Lenders	56	36	18	61
Grand Total	162	122	75	170

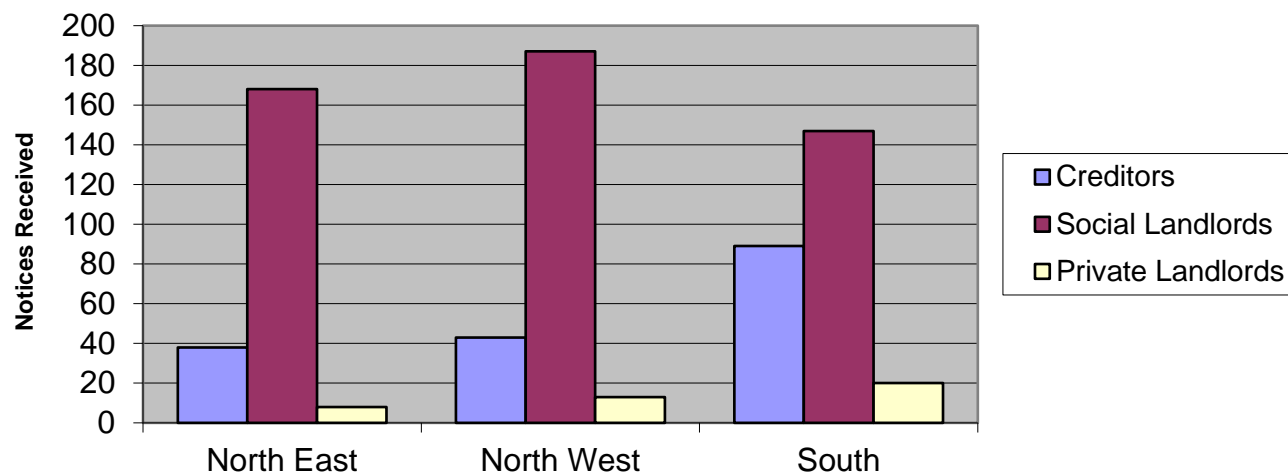
SECTION 11 NOTICES BY MONTH/LANDLORD TYPE				2017/2018
Month	Creditors	Social Landlords	Private Landlords	Totals
January	19	54	5	78
February	78	263	20	361
March	73	185	16	274
<b>Total</b>	<b>170</b>	<b>502</b>	<b>41</b>	<b>713</b>

**Section 11 Notification**



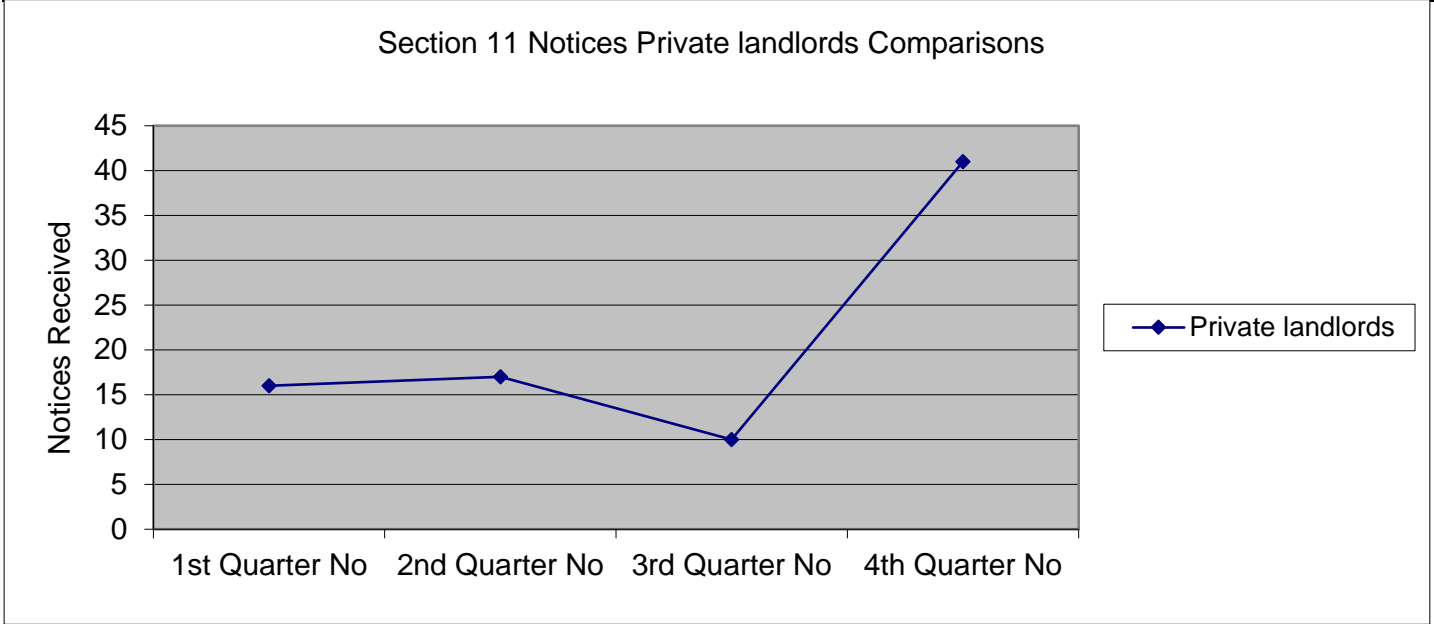
SECTION 11 NOTICES BY SOCIALWORK AREA				2017/2018
CHCP	Creditors	Social Landlords	Private Landlords	Totals
North East	38	168	8	214
North West	43	187	13	243
South	89	147	20	256
<b>Totals</b>	<b>170</b>	<b>502</b>	<b>41</b>	<b>713</b>

**Section 11 Notices by CHCP**



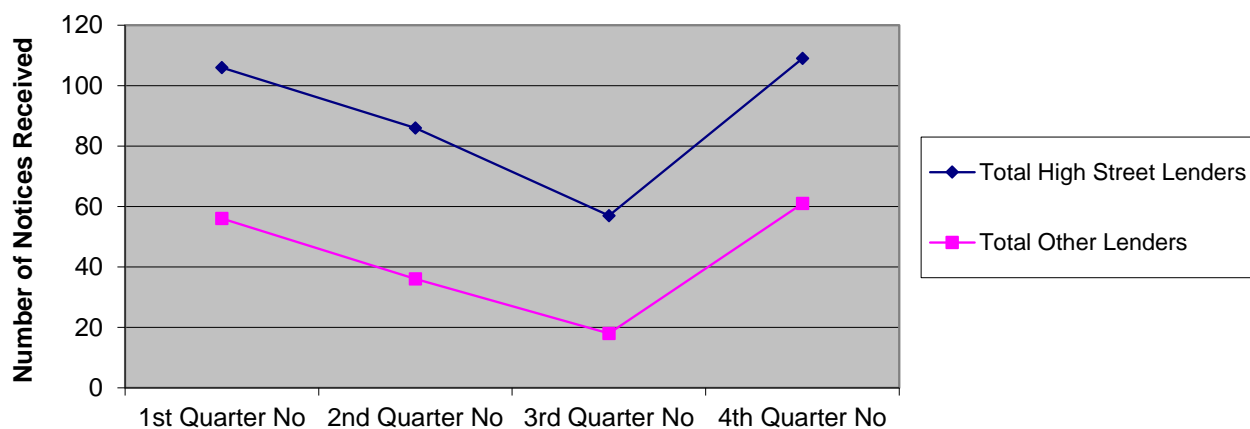
# SECTION 11 NOTICES - PRIVATE LANDLORD COMPARISONS 2017/2018

Private landlords	1st Quarter No	2nd Quarter No	3rd Quarter No	4th Quarter No
Private landlords	16	17	10	41



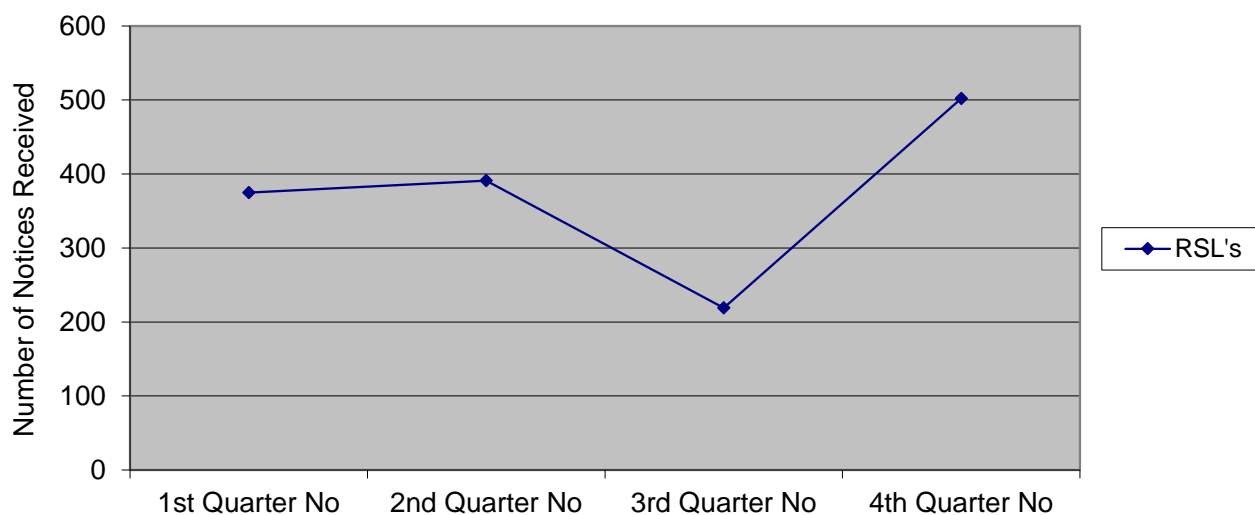
SECTION 11 NOTICES LENDER COMPARISONS				2017/2018
Lender	1st Quarter No	2nd Quarter No	3rd Quarter No	4th Quarter No
Total High Street Lenders	106	86	57	109
Total Other Lenders	56	36	18	61

Section 11 Notices Lender Comparisons



SECTION 11 NOTICES - RSL COMPARISONS				2017/2018
RSL	1st Quarter No	2nd Quarter No	3rd Quarter No	4th Quarter No
RSL's	375	391	219	502

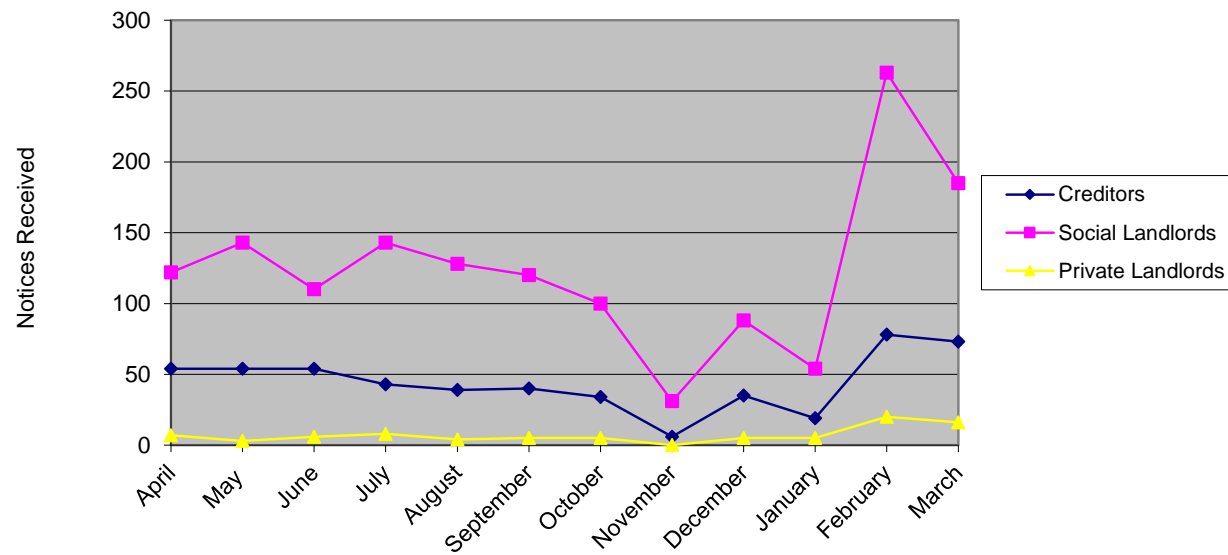
Section 11 Notices RSL Comparisons





SECTION 11 NOTICES - MONTHLY COMPARISONS				2017/2018
Month	Creditors	Social Landlords	Private Landlords	Totals
April	54	122	7	183
May	54	143	3	200
June	54	110	6	170
July	43	143	8	194
August	39	128	4	171
September	40	120	5	165
October	34	100	5	139
November	6	31	0	37
December	35	88	5	128
January	19	54	5	78
February	78	263	20	361
March	73	185	16	274
<b>Total</b>	<b>529</b>	<b>1487</b>	<b>84</b>	<b>2100</b>

Section 11 Notices - Monthly Comparisons



# SECTION 11 NOTICES - YEAR ON YEAR COMPARISON

2009 - Present

YEAR	Total Notices Received				TOTAL
	Q1	Q2	Q3	Q4	
2009-2010	562	737	600	645	2544
2010-2011	565	567	361	992	2485
2011-2012	548	720	782	842	2892
2012-2013	713	657	602	691	2663
2013-2014	582	551	610	748	2491
2014-2015	688	556	517	488	2249
2015-2016	498	602	562	592	2254
2016-2017	460	652	483	592	2187
2017-2018	553	530	304	713	2100

