

OFFICIAL

GLASGOW CITY COUNCIL

EDUCATION SERVICES

**THIS IS A FORMAL
CONSULTATIVE
DOCUMENT**

Proposal: to close St Stephen's RC Primary and St Kevin's ALN Primary and, create a new combined, inclusive primary school.

This will provide a co-educational learning environment for many children, enabling them to access learning in their local community.

School(s)	Ward(s)	Strategic Planning Area	Learning Communities
St Stephen's Primary St Kevin's ALN Primary		North East North East	St Roch's Learning Community St Roch's Learning Community

REPORT BY EXECUTIVE DIRECTOR OF EDUCATION

This document has been issued by Glasgow City Council for consultation in terms of the Schools (Consultation) (Scotland) Act 2010.

The Ordnance Survey map data included within this document is provided by Glasgow City Council under licence from Ordnance Survey in order to fulfil its public function in relation to this public consultation. Persons viewing this mapping should contact Ordnance Survey Copyright for advice where they wish to licence Ordnance Survey mapping/data for their own use.

OFFICIAL

1. Background

- 1.1 In November 2019, St. Stephen's Primary and St. Kevin's Primary Schools moved in to Sighthill Community Campus, a purpose-built school development, costing £22million. This fully enables children in both the mainstream and additional needs sectors to work and learn together within an environment appropriate to all needs
- 1.2 The children in St Kevin's Primary have a range of additional support needs, including those with complex learning and communication profiles; who require high levels of support and assistance. In session 2021/22, there are 64 children in the school.
- 1.3 There are 11 FTE teaching staff (0.5 FTE of which is the Head Teacher). There are 15 Support for Learning Workers, two additional Support for Learning Practitioners and nine escorts who assist in transporting the children to and from school.
- 1.4 St Stephen's Primary has a roll of 197. It has a teaching staff of 13.0 FTE, two Child Development Officers (PEF and Covid Recovery Funding) and 5.6 FTE Support for Learning Workers. There is currently a shared senior management team, which consists of the headteacher and two deputy headteachers across the two primary schools. There are 13 full time equivalent teaching staff and eight support staff in St. Stephen's Primary.
- 1.5 In line with Glasgow's policy for inclusion, the children in both schools have been working on a range of learning activities taking into account their additional support needs, which give the children the opportunity to learn together, learn from each other and learn from the environment.
- 1.6 As part of this approach, parents and the school community were consulted. This took place to seek the views of stakeholders on a range of proposals regarding the schools operating as one school. This included a change in uniform. The children in both schools have been wearing the same uniform since August 2020.
- 1.7 122 questionnaires were returned representing 62% of the parental body across the two schools.

OFFICIAL

OFFICIAL

The responses were:

	YES	%	NO	%
I would like the school to be one school	117	96%	5	4%
I would like the school to have one name	105	86%	17	14%
I would like them to have the same uniform	117	96%	5	4%
I would like my child to use technology to complete homework tasks	112	92%	10	8%
I am happy with the school's plan to reduce paper homework	112	92%	10	8%

2. Proposal

- 2.1 This proposal is St. Stephen's Primary and St. Kevin's Primary schools will close (although not a legal stance, this is viewed as a merger within the local community) and become one school. The ASL provision would not be identified as a separate provision within the school in line with the inclusive approach and ethos which exists within the campus. There would also continue to be enhanced provision in the new school for children with additional support needs.
- 2.2 The change of status of the schools would not impact on the staffing ratios which currently apply to the schools, or the resource allocation or nature of support provided, ensuring that the children are supported in the same way that they are currently.
- 2.3 The new school would remain part of St Roch's Learning Community.
- 2.4 From November 2021 until January 2022, Education Services will conduct a formal consultation to seek views of all stakeholders on the proposal to combine the schools.

3. Roll Projection Methodology

- 3.1 Planning for the demand for educational places in the city is reviewed annually. Future demand is predicted taking into account the following factors:
- Birth rates in Glasgow.
 - Housing needs assessment, contained in strategic and local plans.
 - Migration of children in and out of Glasgow.
 - The historical demand for placements made by parents resident in other Local Authorities.
- 3.2 Allocation for children requiring a change of educational pathway is carefully

OFFICIAL

OFFICIAL

planned for and monitored by the Area Inclusion Groups and the Head of Inclusion and Equalities. This ensures that caps and allocations do not exceed agreed allocations, unless approved by the Executive Director of Education due to the exigencies of the service.

- 3.3 The planned combined capacity for both schools would remain unchanged. The capacity of St. Kevin's is 70 pupils and for St. Stephen's it is 350 pupils. Children would continue to be offered places for the enhanced provision following assessment and consideration by Area Inclusion Groups.
- 3.4 The lay out of the campus has been planned to provide space for additional classrooms to be added, if required, as the population of the Northgate Housing Development and the regeneration of Sighthill continues to grow.

4. Educational Benefit Statement for the Proposal

4.1 The Children

- 4.1.1 Currently, both primaries provide high quality educational experiences. They provide valued support to parents, carers and children. This proposal would continue this high standard of provision. The schools already provide a quality learning environment and fully support children's learning within Curriculum for Excellence from foundation level through to the end of second level.
- 4.1.2 The staff in both schools already work together as one team and learning community to fulfil legislative requirements in meeting the needs of all the children especially those with additional support needs.
- 4.1.3 The children already learn and play together. Both sectors share all resources and there is a natural fluidity which allows the children to transition in and around the building. Examples of this are:
- Where appropriate, children in St Kevin's Primary infant department join in with play with their P1 and P2 peers. They also join them for PE and dance.
 - All pupils in St Kevin's Primary have the opportunity to join with the mainstream peers for PE, outings, PEEK visits and, where developmentally appropriate, curricular areas such as maths (a p4 pupil in Jura class accesses Maths in P5 as he is working on second level)
 - Enriched Nurture is an approach to support children in both sectors from P4-7 to address their well-being and support them accessing learning. This is delivered by the principal teachers from both sectors.
- 4.1.4 The school promotes inclusion and celebrates diversity. All pupils are given equitable opportunities to go on trips, learn new skills, achieve awards and fulfil their potential. All pupils from P5-7 in both sectors achieve their paddle power certificate, John Muir Award and have the opportunity to go on residential trips.

OFFICIAL

OFFICIAL

4.1.5 As the children wear the same uniform, they are not identified as belonging to a different school. This is both significant and important for pupils who learn and communicate differently.

4.1.6 The proposal seeks to continue to further these benefits for all children.

4.2 Parents, Carers and Local Community

4.2.1 There would be no change for parents, carers and the local community as the schools have been operating a completely inclusive model since the appointment of the Headteacher in 2018.

4.2.2 All parents/carers meetings take place with both schools at the same time. This includes Primary 1 induction and Primary 7 graduations.

4.2.3 The current Parent Council is already a joint Parent Council with representatives from both schools. However, this would change to a single Parent Council of one school with the appropriate changes made to their constitution.

4.2.4 Parents and carers already work together and benefit from all school activities such as the Summer School, October Week activities, after school clubs, parent training and life-coaching.

4.2.5 It is important, however, that parents and carers are secure in the knowledge that their families and children's needs are understood and met in undertaking any formal change to the schools. Education staff in the merged primary school would build on the already existing good practice and relationships, working in collaboration with a wide range of professional partners, to ensure that all parties were supported and understood the reason for the creation of a new inclusive school.

4.3 Other users

4.3.1 There is no change to other community groups or partners using the premises.

4.4 Future users of the provision

4.4.1 The changes proposed would further improve education within our learning community. There would be no detriment to future users of the provision.

4.5 Other schools/establishments in our authority

4.5.1 The proposal would not impact adversely on other schools or establishments. The merged school would continue to be part of same learning community

OFFICIAL

OFFICIAL

and deliver the same but enhanced provision for learners as it does at present.

4.6 Assessment of any other likely effects of the proposal (if implemented)

4.6.1 The proposal would continue to meet the needs of all the children without the confusion of using two names. With two staff teams coming together, there would be continued and increased opportunities for the sharing of good practice. A larger staff, including specialist teachers allows for further sharing of best practice and more opportunities for curriculum development. This is already in place and the school can evidence the positive impact on learning and teaching.

4.7 How the school would intend to minimise or avoid any adverse effects that may arise from the proposal (if implemented)

4.7.1 Education Services has a duty to secure improvement in education. Through quality assurance and improvement policy, Education Services monitors and supports the quality of education being delivered in all its establishments. This policy would be used to monitor and support the quality of education and care being delivered in the merged primary school to ensure that provision for children continues to develop and improve. Leaders of Learning and Quality Improvement Officers would provide support prior to, during and after the development of the one school to ensure continuity of learning. The Head of Service would oversee the process.

5. Equality Statement

5.1 An Equality Impact assessment would be undertaken as part of the consultation exercise to assess if the proposal discriminates against anyone on the basis of:

- Age
- Gender
- Religion
- Racial Group
- Disability
- Sexual Orientation

In carrying out the equality impact assessment we would take account of (and address) any equality issues raised in written or oral representation made as part of the consultation process. The result of the equality impact assessment would be included in the consultation response document and would also be available on the Glasgow City Council website.

OFFICIAL

OFFICIAL

6. Proposed Date for the Implementation of the Proposal

- 6.1 Pending a successful consultation process, it would be hoped that the process would be complete to allow the schools to be opened as one combined school in August 202.
- 6.2 If there were agreement to the schools combining to form one school, then there would then be a consultation on the name for the new combined school.

7. The Consultation Process

- Parent Councils
- Parents/carers/children
- Staff
- Trade Unions
- Community Councils
- Area Partnerships
- Groups formed under Part 2 of the Local Government in Scotland Act (2003)
- Other users of the school premises

In addition, a dedicated page has been set up on the Council website for both information and to enable interested parties to respond to the proposals.

Web site address: www.glasgow.gov.uk/schoolconsultations

E-mail address: Schoolconsultations@glasgow.gov.uk

Due to the nature of the consultation, consultation responses will be gathered via a Smart Survey questionnaire which will be on the web-site and placed in press adverts. Schools will also be asked to include the link in their newsletters to parents and carers. In addition, full use will be made of social media to ensure as wide a reach as possible to stakeholders.

The link is: <https://www.smartsurvey.co.uk/s/3EWWKH/>

Stakeholders who do not have access to IT can use local libraries where the consultation will be advertised. Schools will also be encouraged to support parents as they did successfully when on-line school registration was introduced.

The indicative timetable for the consultation is:

OFFICIAL

OFFICIAL

Date	Action	Location
21 st October	City Administration Committee	
1 st November 2021	Start of Public Consultation Period begins	
16 th November 2021	Public meetings 7pm	Sighthill Campus
5 th January 2022	End of Public Consultation Period	
To be confirmed January 2022	Information to Education Scotland for report (3 week period)	
To be confirmed	Consultation response report published at least 3 weeks prior to City Administration Committee	
To be confirmed March 2022	Report to City Administration Committee	

8. Involvement of Education Scotland (HMI)

- 8.1 This consultation is in line with the Schools (Consultation) (Scotland) Act 2010 as amended. Education Scotland would be informed of the consultation through the Area Lead Officer.
- 8.2 A copy of the consultation proposal would be sent to Education Scotland by Education Services. Education Scotland would also receive a copy of any written representations received by Education Services from any person during the consultation period or, in agreement with Education Scotland, a summary of them. They would also receive a summary of any oral representation made to Education Services at any public meeting and a copy of any other relevant documentation.
- 8.3 Education Scotland would then prepare a report on the educational aspects of the proposals no later than three weeks after Education Services has sent them all representations and documents as mentioned above.
- 8.4 In preparing their report, they may visit the affected establishments and make such reasonable enquiries of such people there, as they consider appropriate.

9. Preparation of Consultation Report

- 9.1 Education Services would review the proposals having regard to the Education Scotland report, responses to the consultation and oral representations made at the public meetings. Education Services will then prepare a consultation response report for consideration by the City Administration Committee of the Council.

OFFICIAL

OFFICIAL

- 9.2 The consultation response report would be published in electronic and printed formats and would be available on the Glasgow City Council website, Education Services, City Chambers East Building, 40 John Street, Glasgow G1 1JL and at the affected schools free of charge. All those who received direct notification of the consultation would be sent either a full or summary response document. All those who responded and provided contact details through the consultation process would also receive a copy of the full or summary response document as appropriate.
- 9.3 The response report would include a record of the total number of written representations made during the consultation period, a summary of the oral representations made at the public meeting, the council's response to the Education Scotland report and any other relevant information, including details of alleged inaccuracies and how these have been handled. The report will also contain a statement explaining how it complied with the requirements to review the proposal in light of the Education Scotland report and representations (both oral and written) that was received. The Consultation Response Report would be published at least three weeks prior to the City Administration Committee making a decision.
- 9.4 Reasonable requests for alternative forms of consultation papers or response documents will be accommodated wherever possible e.g. audio or by interpreted support. Should you wish a copy of this consultation paper or response document in any other format please contact Education Services at:
- Online at Schoolconsultations@glasgow.gov.uk
 - At Education Services, City Chambers East Building, 40 John Street, Glasgow G1 1JL
 - Or by calling 0141 287 4327.

10. Note on Corrections

If any inaccuracy or omission was discovered in the proposal document and/or during the consultation either by Education Services or any person, Education Services would determine if relevant information has been omitted or, if there had been an inaccuracy. Education Services would then take appropriate action, which may include the issue of a correction or the reissuing of the proposal document or the revision of the timescale of the consultation period as appropriate. In that event, relevant consultees and Education Scotland will be advised.

11. Conclusions from the Consultation Exercise

The outcome and conclusion of the consultation exercise would be presented to the City Administration Committee of the Council.

12. Scottish Ministers' Call-In

OFFICIAL

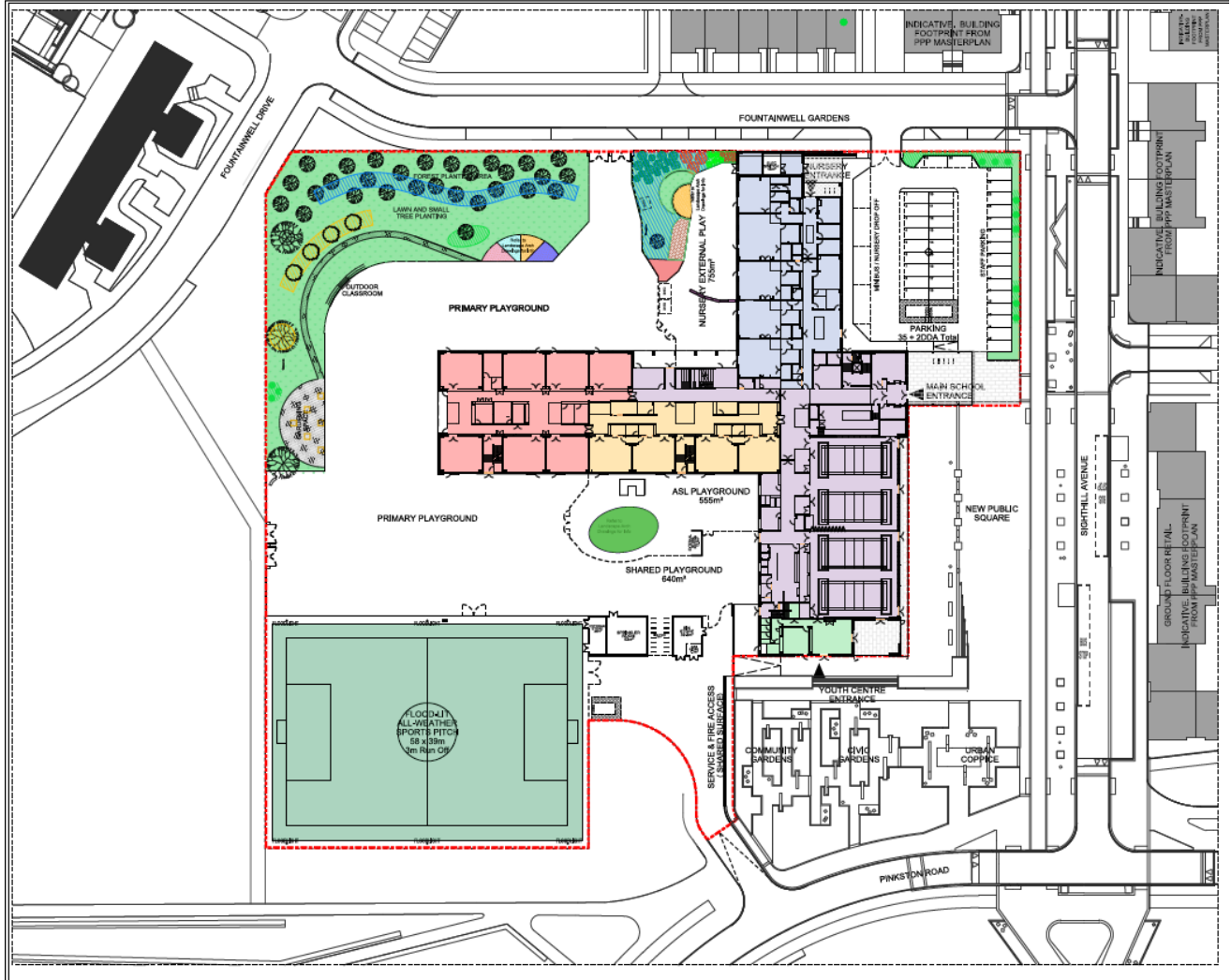
OFFICIAL

The Schools (Consultation) (Scotland) Act 2010 contains the option for a referral to Scottish Ministers as two schools are proposed to close.

13. Appendices

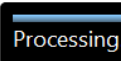
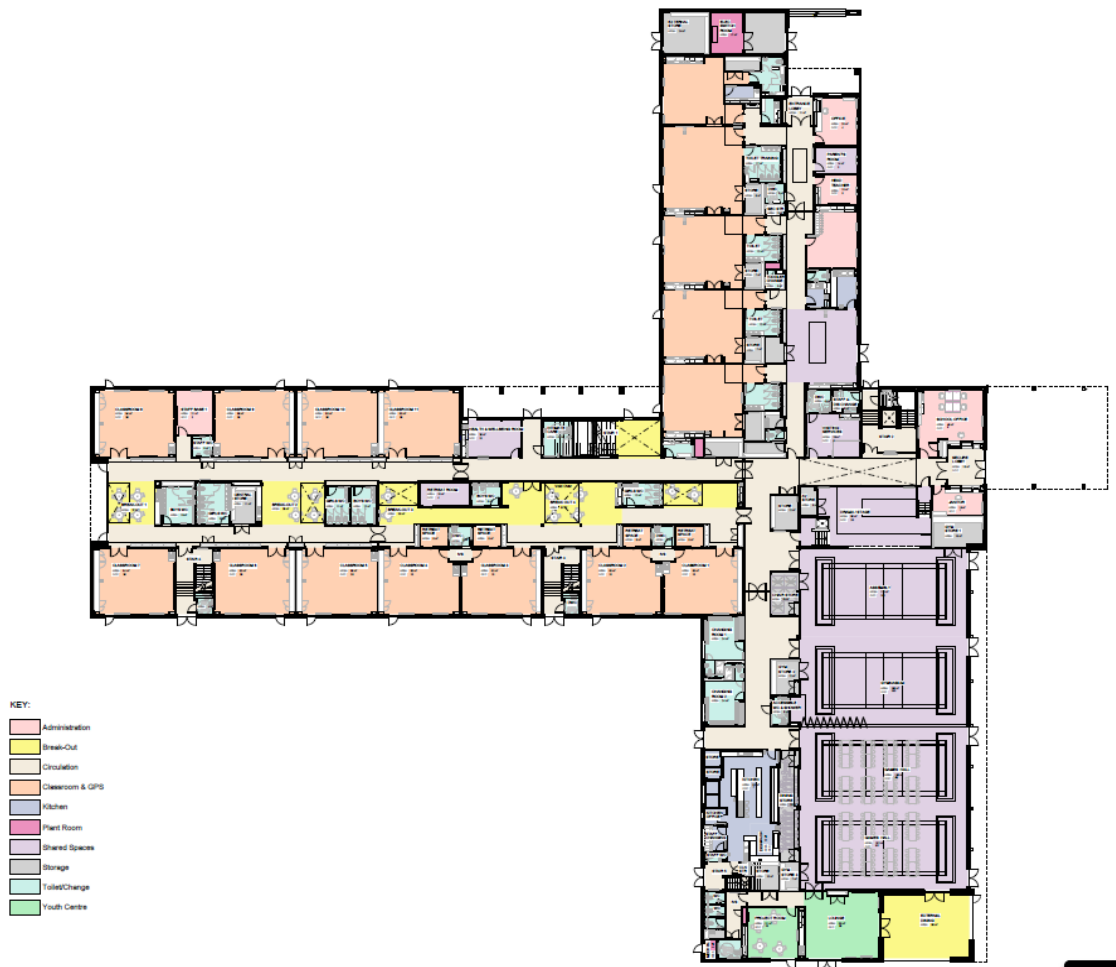
Appendix 1	Map showing location of the schools
Appendix 2	Layout of the schools showing classrooms

Location of Sighthill Campus



Layout of Campus showing classrooms

Ground Level



Layout of Campus showing classrooms

Level 1

