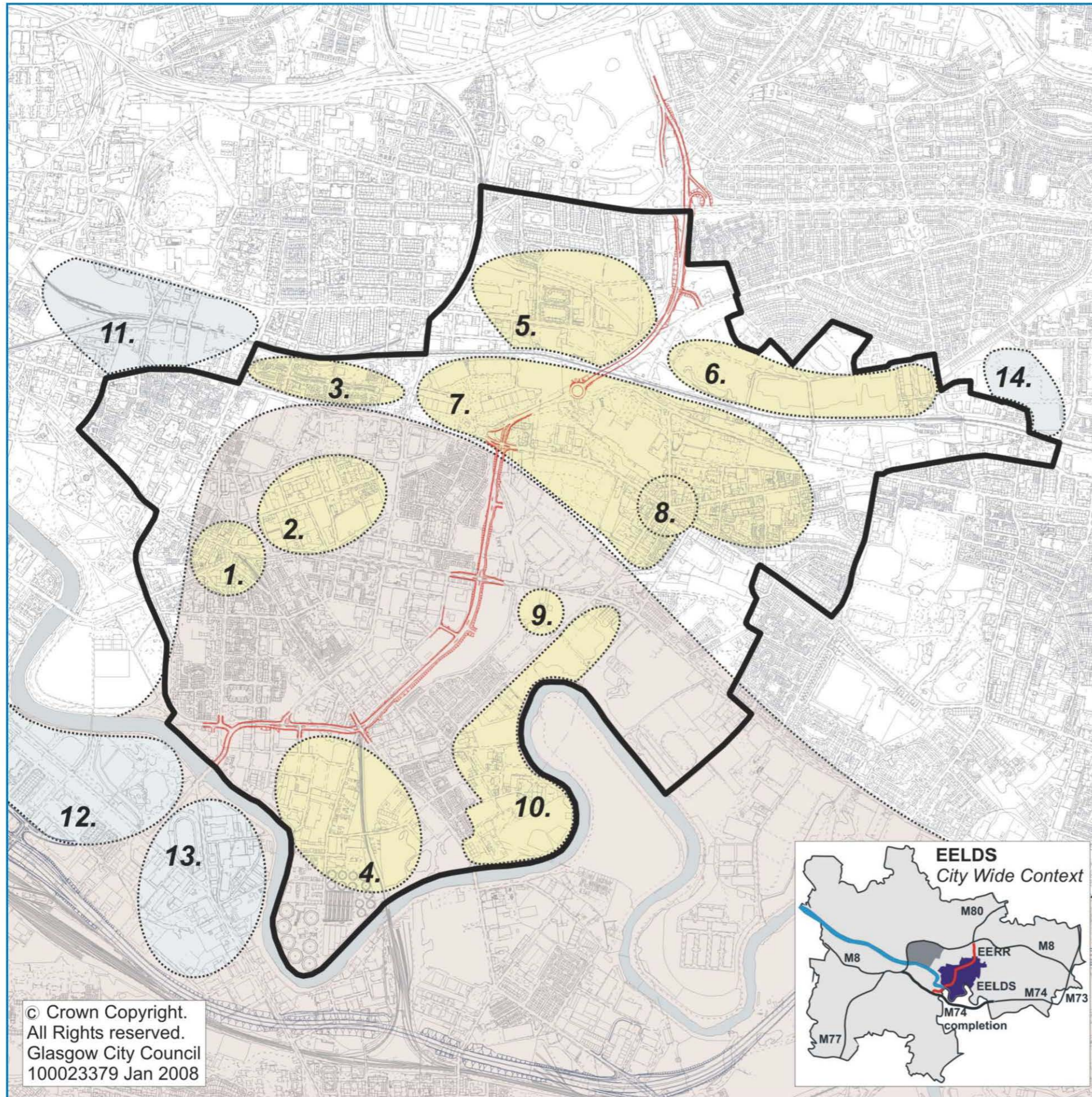


**MAP 01**  
**AREA OF**  
**LOCAL DEVELOPMENT**  
**STRATEGY**



**KEY**

East End Local Development Strategy Boundary

East End Regeneration Route

M74 Completion

Projects Influencing LDS

Clyde Gateway

Projects within the Local Development Strategy

**1.** Bridgeton Cross

**2.** Mile End Industrial Area

**3.** Glasgow Housing Association

**4.** South Dalmarnock

**5.** Haghill

**6.** South Carntyne

**7.** Parkhead Centre Action Plan

**8.** Parkhead Townscape Heritage Initiative

**9.** National Indoor Sports Arena & Velodrome

**10.** Commonwealth Games Village 2014

Projects outwith the Local Development Strategy

**11.** College Lands

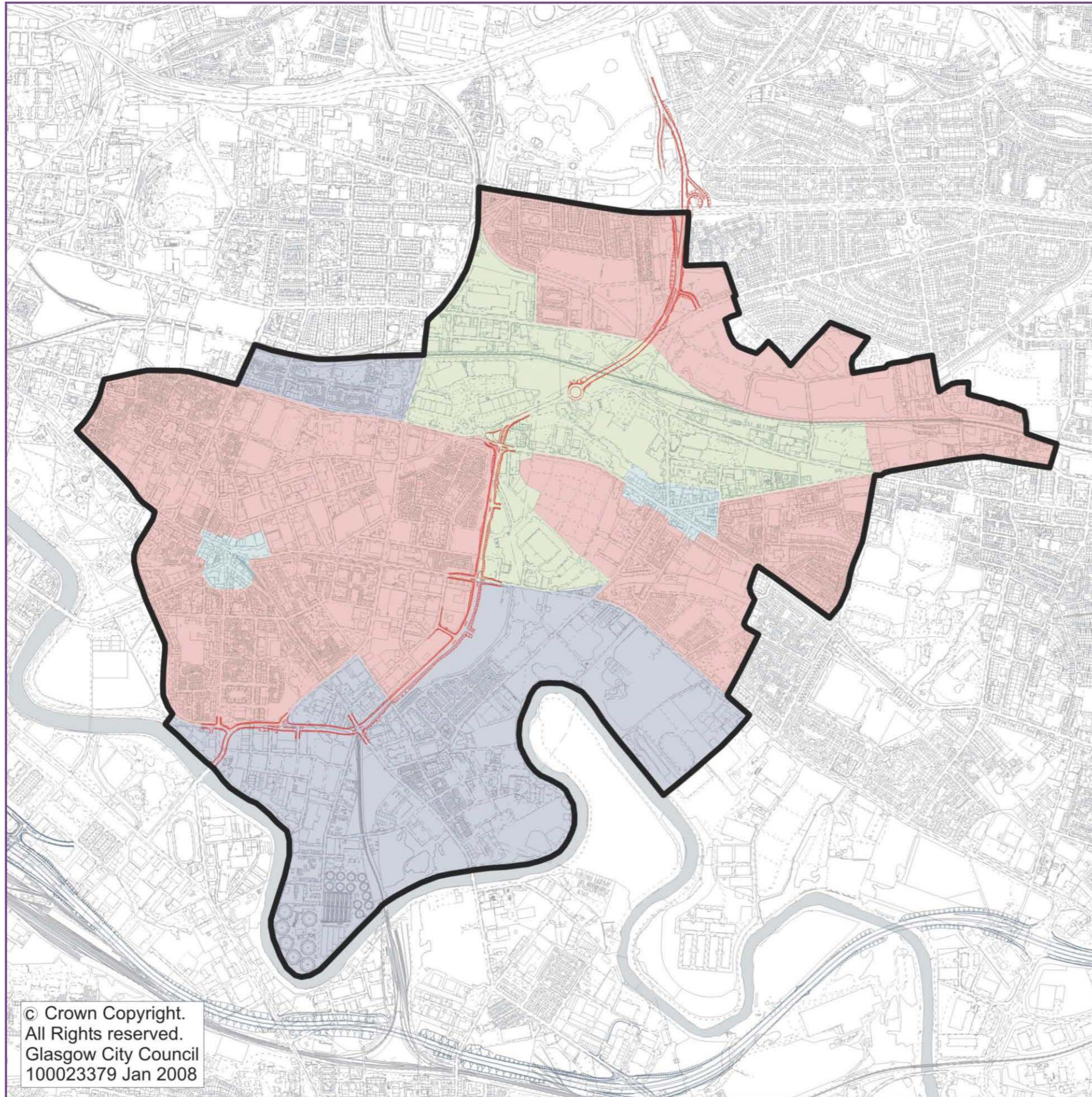
**12.** Oatlands

**13.** Shawfield





**14.** Greenfield Park

© Crown Copyright.  
 All Rights reserved.  
 Glasgow City Council  
 100023379 Jan 2008

**MAP 02**  
**THE**  
**REGENERATION**  
**ZONE AREAS**

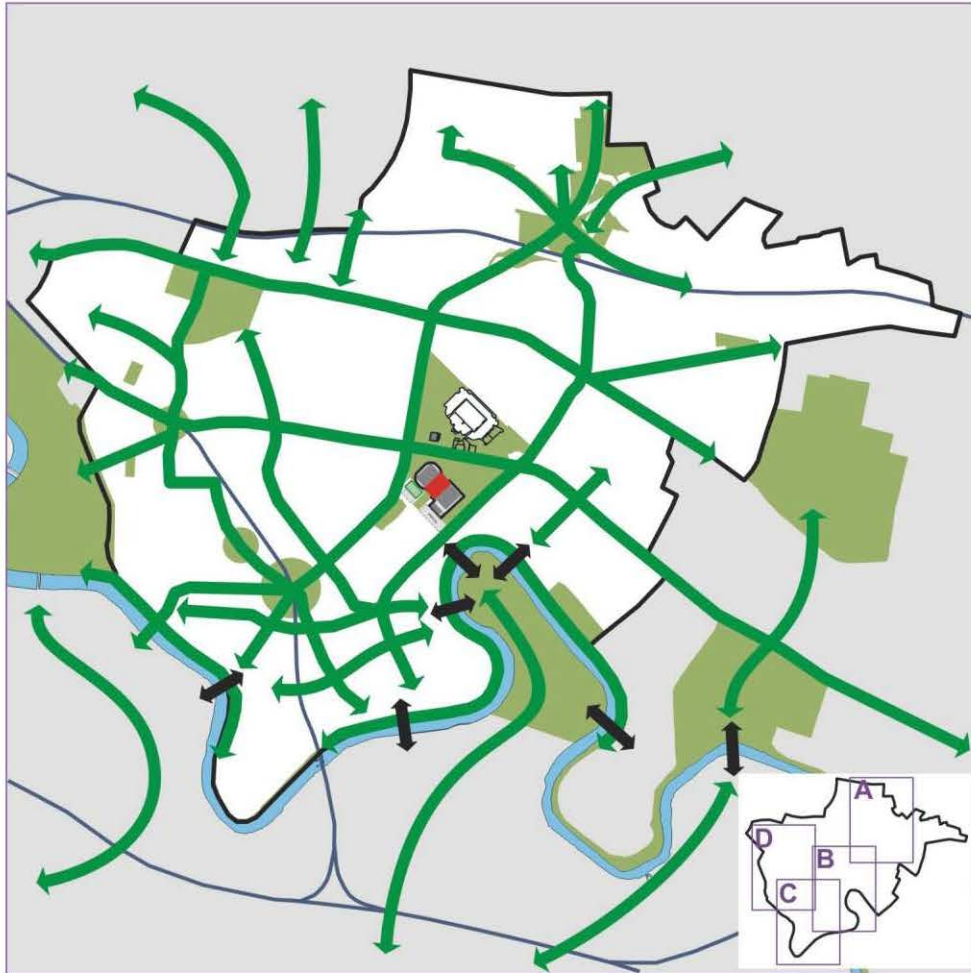


© Crown Copyright.  
All Rights reserved.  
Glasgow City Council  
100023379 Jan 2008

KEY	
	Repair and Reconnection
	Repair and Reinvention
	Reconfiguration
	Heritage

MAP 03

GENERAL ARRANGEMENT OF GREEN NETWORK



KEY

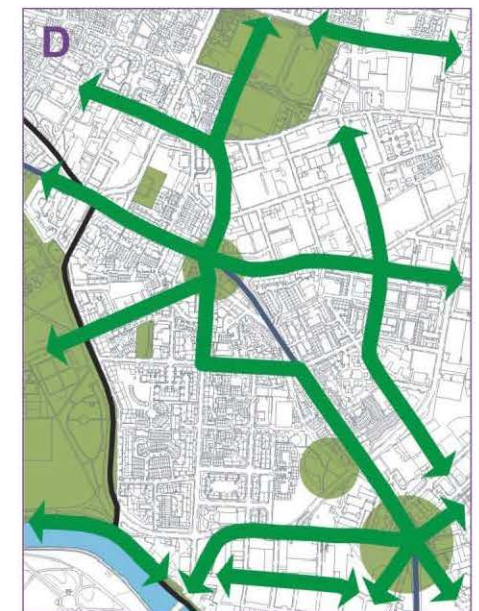
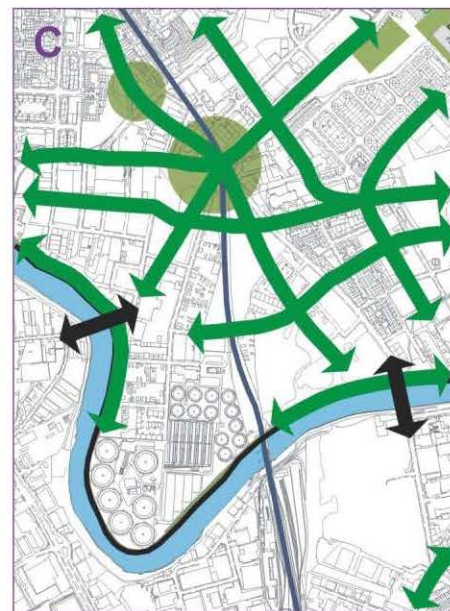
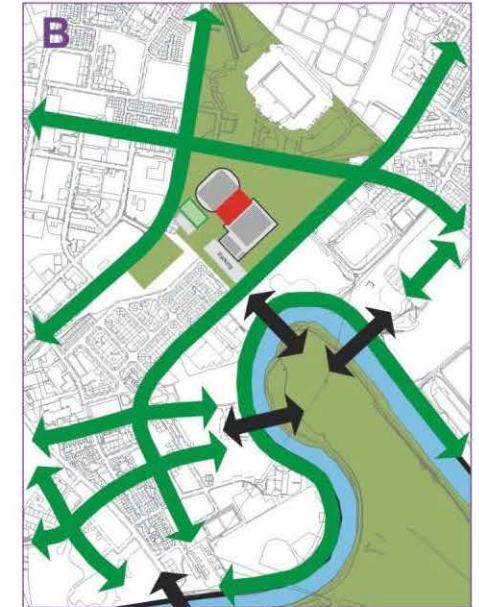
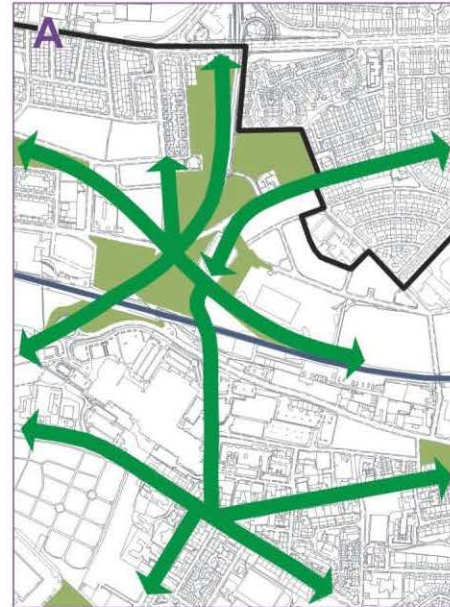
- |   |  |   |                                  |
|---|--|---|----------------------------------|
|  | East End Local Development Strategy Boundary |  | Green Routes & Core Path Network |
|  | Key Green/Civic Spaces & Public Realm        |  | Cross River Links                |
|  | River Clyde                                  |  | Rail Links                       |

A - Haghill

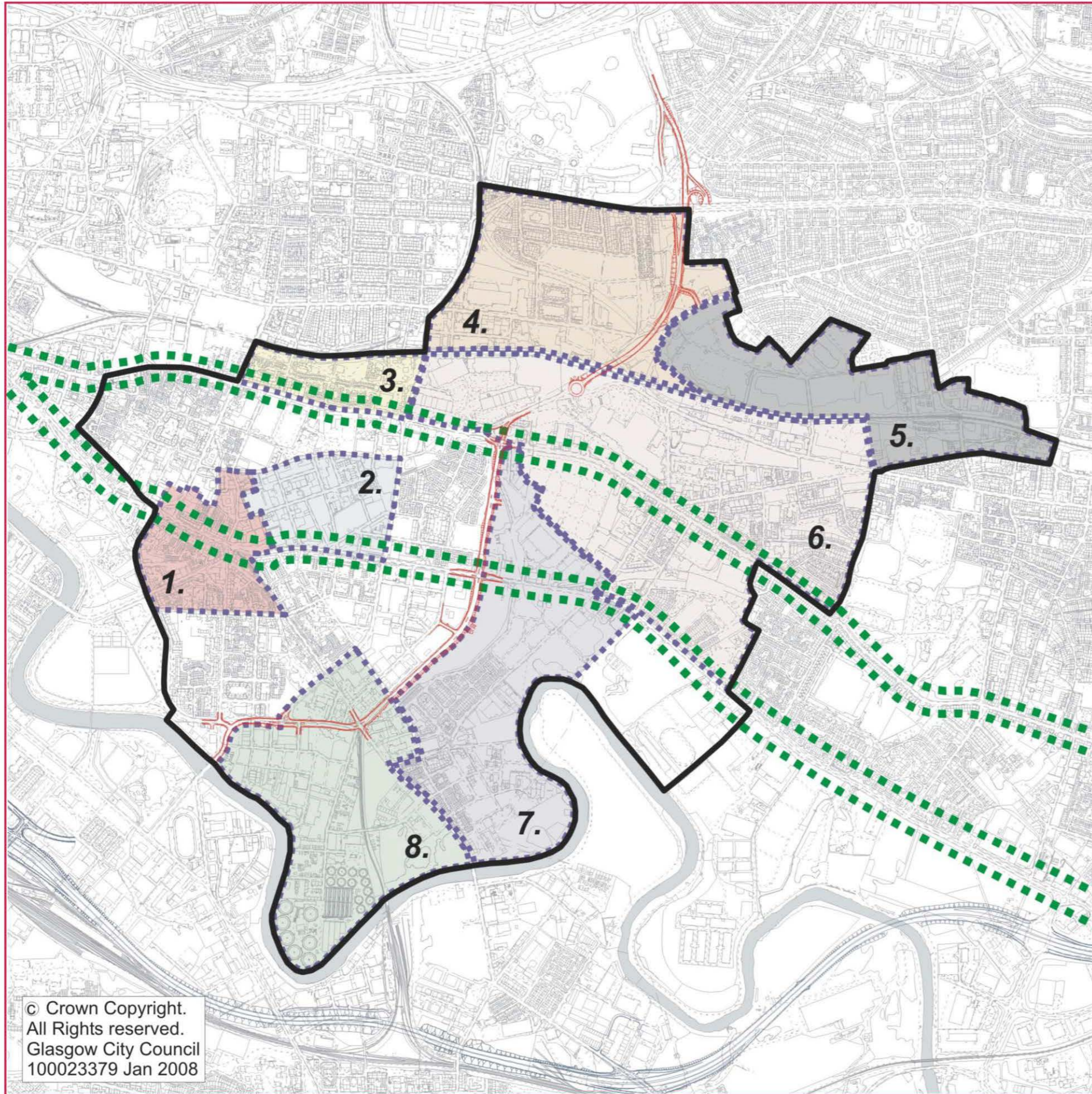
C - Dalmarnock

B - Stadium District

D - Bridgeton



**MAP 04**  
**DEVELOPMENT**  
**FRAMEWORK**  
**AREAS**

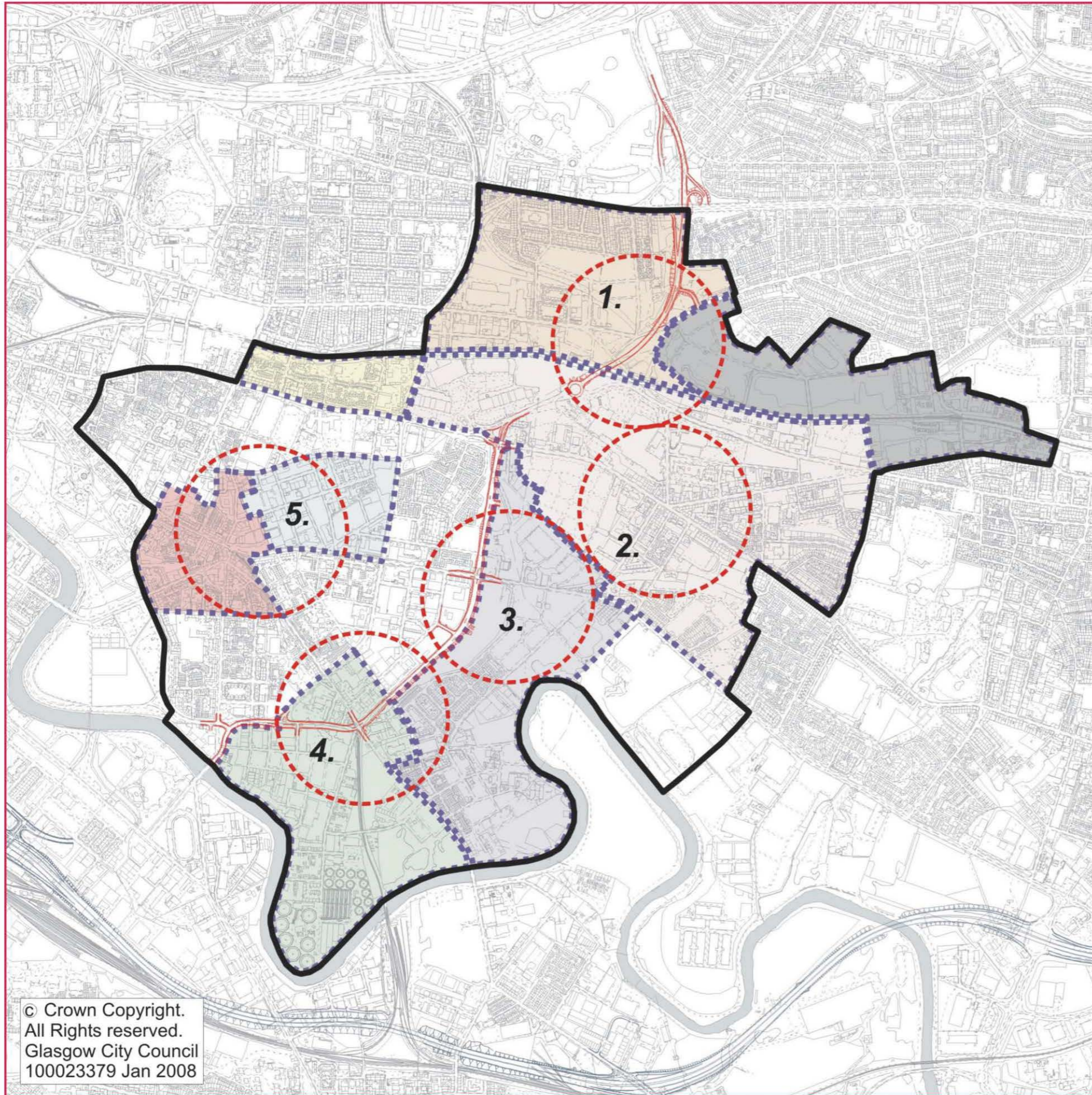


**KEY**

	Development Framework Areas
	Corridors of Change
	1. Bridgeton Cross
	2. Mile End
	3. Gallowgate
	4. Haghill
	5. South Carntyne
	6. Parkhead
	7. Dalmarnock / Stadium
	8. South Dalmarnock

© Crown Copyright.  
 All Rights reserved.  
 Glasgow City Council  
 100023379 Jan 2008

**MAP 05**  
**THE**  
**DEVELOPMENT**  
**HUBS**



© Crown Copyright.  
All Rights reserved.  
Glasgow City Council  
100023379 Jan 2008

**KEY**



Development Hubs

**1.**

John Wheatley College/  
Parkhead Station

**2.**

Parkhead Cross / Parkhead  
Forge

**3.**

Stadium District

**4.**

Dalmarnock

**5.**

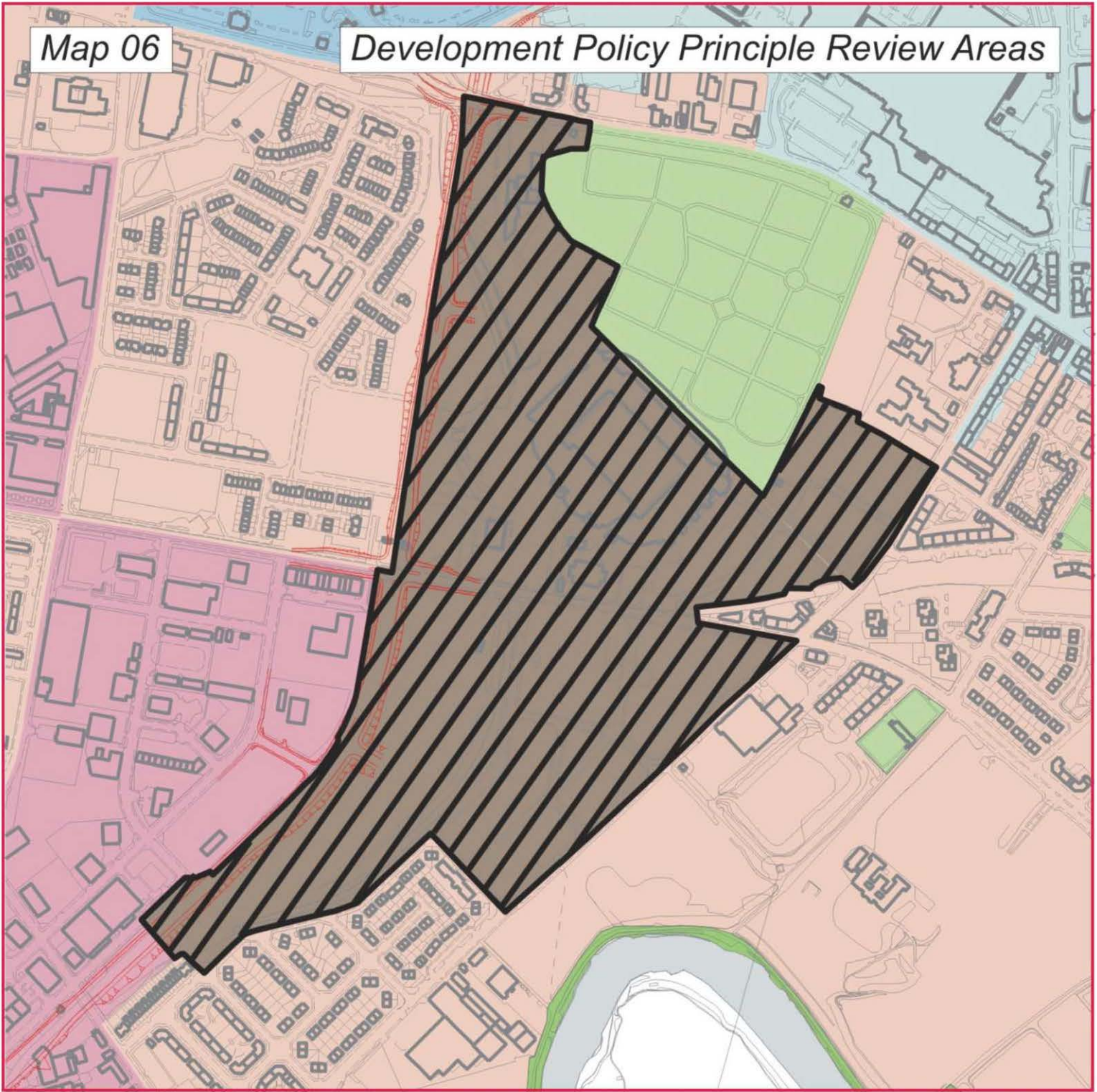
Bridgeton & Mile End





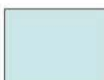

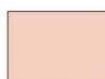


Development Framework  
Areas

Map 06

Development Policy Principle Review Areas

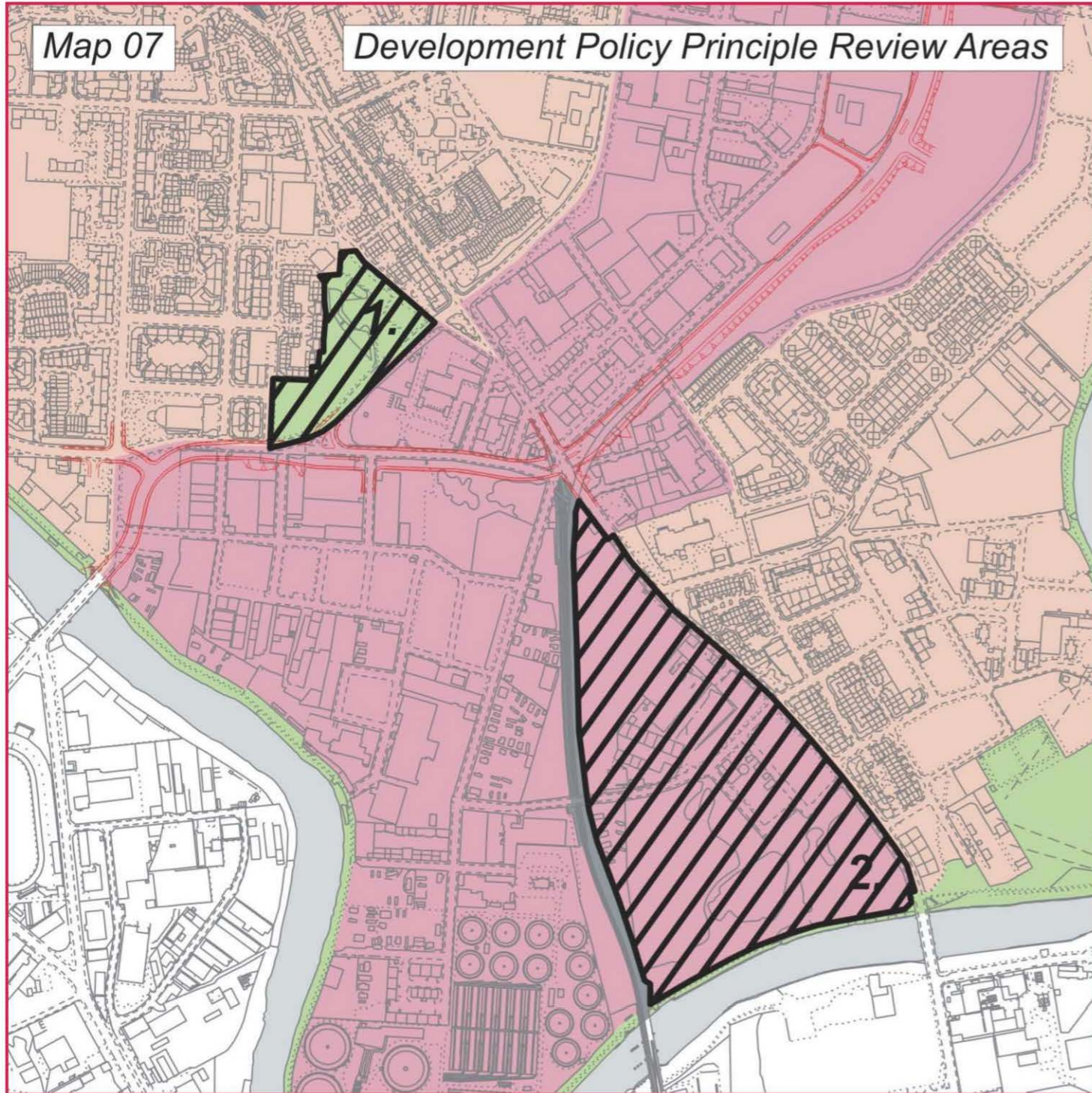


KEY

- |  |  |   |             |   |                              |   |            |
|--|--|---|-------------|---|------------------------------|---|------------|
|  | Review Area<br>Dev 10 - Stadium<br>(see Policy 52) |  | Stadium     |  | Town Centre                  |  | Industrial |
|  |  |  | Residential |  | Other Retail &<br>Commercial |  | Greenspace |

Map 07

Development Policy Principle Review Areas



KEY



Review Areas



Residential



Industrial

1.

Bridgeton  
Greenspace

2.

Dalmarnock  
Industrial Sector



Greenspace

EERR & associated landscaping

Community facilities development opportunity

John Wheatley College

Healthy routes to school

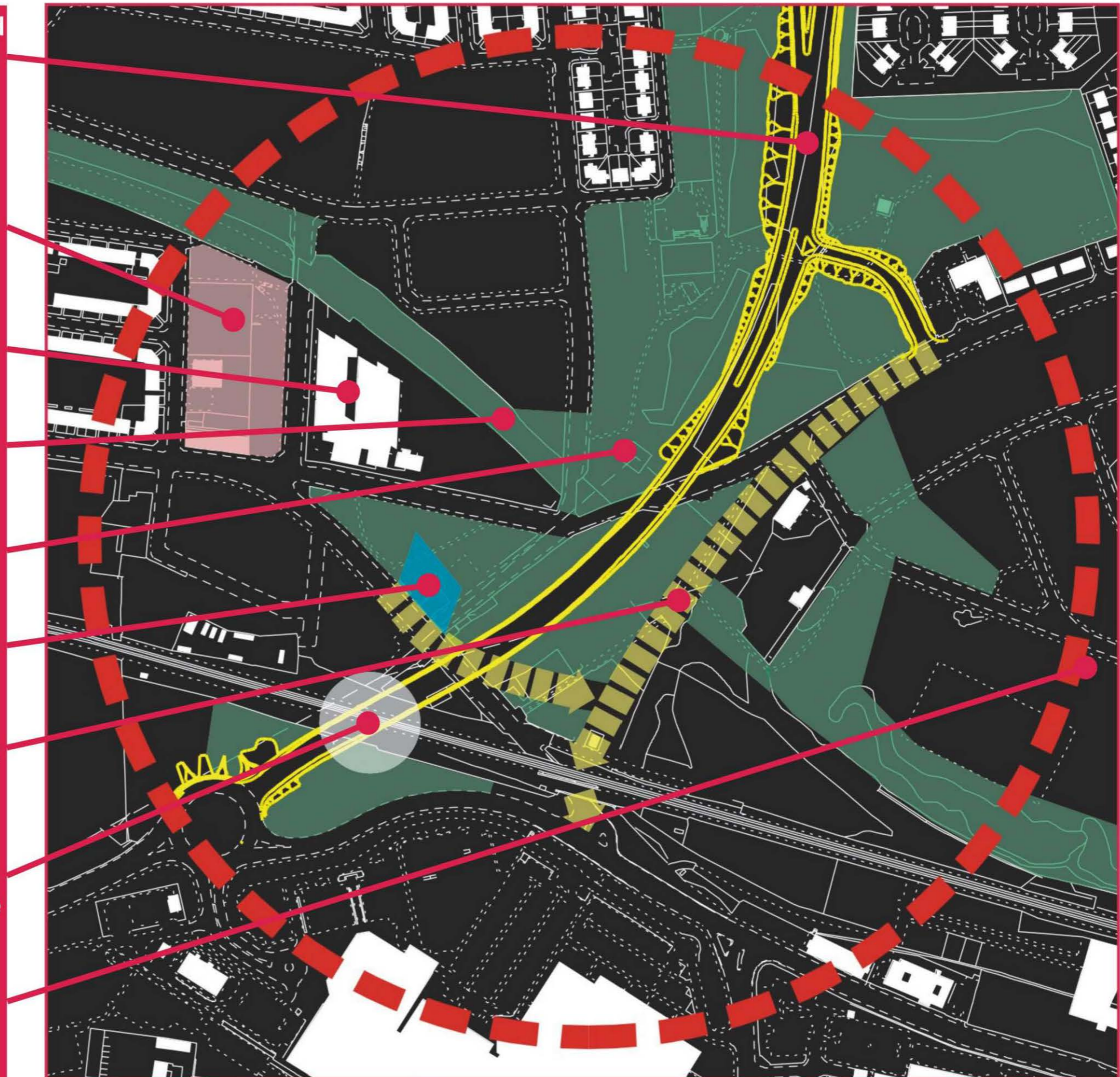
Open Space

Civic Square

Future road alignment options

Railway halt station & transport inter-change

Residential development





**Duke Street Key Connection**

**The Forge Market Repair & Reconfiguration Opportunity**

**The Forge Shopping Centre**

**Funded Quality Bus Corridor**

**Hospital - Potential Development Site**

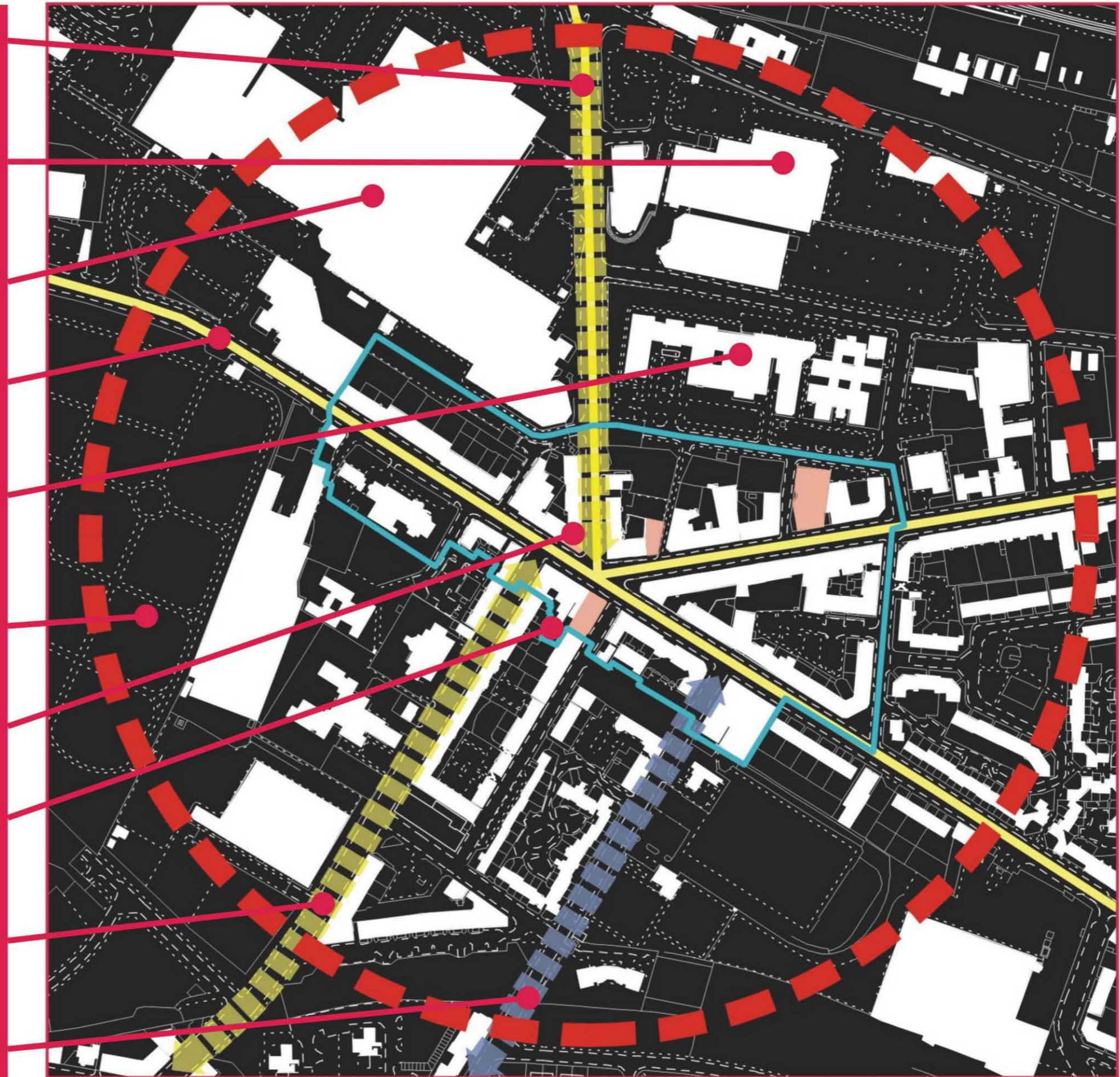
**East End Necropolis Potential Environmental Improvement**

**PXTHI Key Buildings**

**Parkhead Cross Townscape Heritage Initiative boundary**

**Springfield Road Key Pedestrian Connection**

**Key Connection to River & Belvidere site**



**Celtic Football Club**

**Railway station  
providing transport  
inter-change**

**Public realm incl hard  
and soft landscaping,  
SUDS**

**London Road Key  
Connection**

**EERR, incl pedestrian  
route to the stadium  
district & associated  
landscaping**

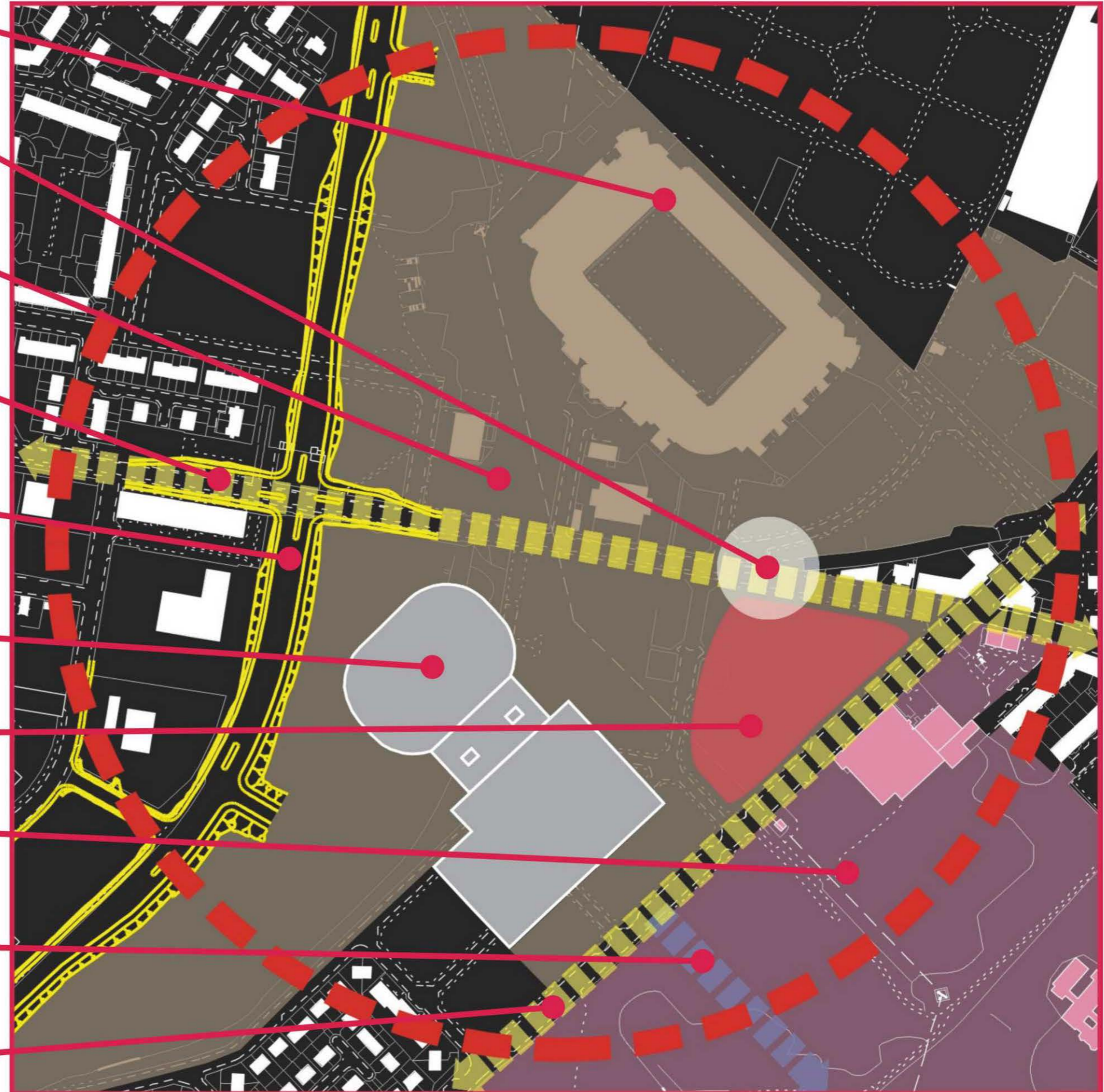
**National Indoor Sports  
Arena & Velodrome**

**Potential Development  
Site**

**Commonwealth  
Games Village 2014**

**Key Connection to  
River & Cuningar  
Loop**

**Springfield Road Key  
Connection**



EERR, including pedestrian route to the stadium district & associated landscaping

Quality Bus Corridor

Development Opportunity possible mixed business

Railway station upgrading & transport inter-change

Public Realm

Proposed Connection extending Springfield Road

Development Opportunity of possible residential tenemental & townhouse units

Development Opportunity possible mixed business use



Mile End Industrial Area new business development and environmental improvements

Community link on Orr St

Key Development Sites

London Rd Key Connection

Public Realm Improvements

Railway station upgrading & transport inter-change

Connection Route to Glasgow Green and the River

Future road re-alignment options

Funded Quality Bus Corridor

