

Play Sufficiency Assessment

Hillhead High School



#HearingYoungPeople'sVoices

CENTRE
FOR
CIVIC
INNOVATION



Play Sufficiency Assessment: Hillhead High School

Background

Play is central to young people's enjoyment of life and essential to their physical and emotional well-being and their healthy development.

In May 2023 new regulations came into force which mean that planning authorities must assess the sufficiency of play opportunities in its area for young people. The Play Sufficiency Assessment (PSA) is intended to provide an overall picture in terms of the current provision and distribution of outdoor play opportunities across the whole of a local authority area.

As part of these new regulations Glasgow City Council has a statutory requirement to engage with young people across the city to understand more around the current opportunities to play, their experiences whilst playing in the city as well as understanding what their current barriers to play are. Key insights will be used to form part of the evidence report for the City Development Plan and will be the start of an ongoing conversation with young people about what it is like to live, learn and play in Glasgow.

Hearing Young People's Voices

The students of Hillhead High School have made a significant contribution to the ongoing citywide discussion. Their valuable insights have aided authorities in gaining a comprehensive understanding of the present realities and challenges associated with utilising local spaces. Additionally, they have provided us with a deeper comprehension of the barriers to recreational activities within their community and the necessary resources for the physical and healthy development of young individuals.

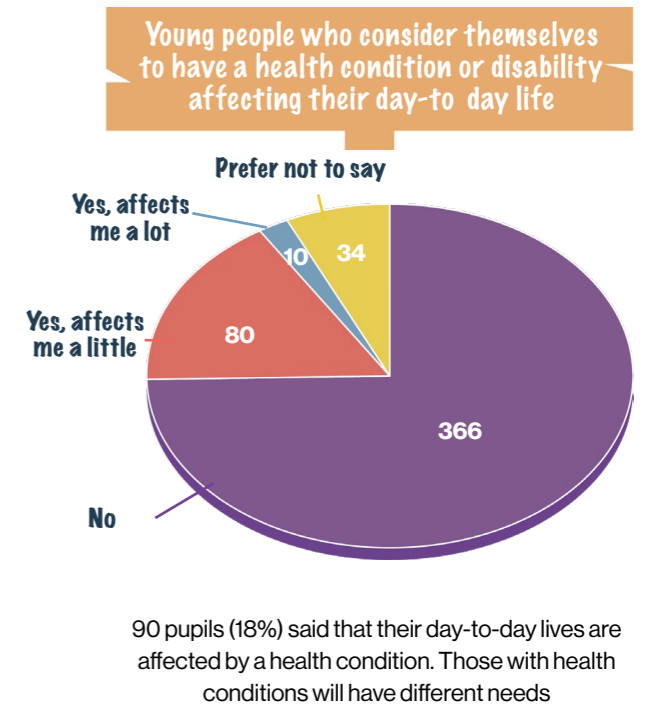
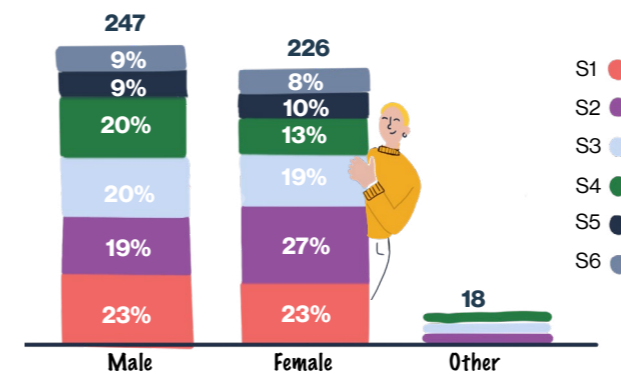
Reports from all schools who participated in the engagement are currently being compared on a citywide scale to assess equalities and formulate future plans for urban development that will help to inform the City Development Plan. We highly appreciate the sincerity and input of the pupil's from Hillhead High School, as their contributions are instrumental in shaping this dialogue.

Demographics

In total 492 pupils across all six year groups took part: a third of the young people attending Hillhead High School.

For each school, the link was shared with a key contact who then arranged for this to be rolled out across the school in a way that worked for them

Young people who answered the survey



What is play

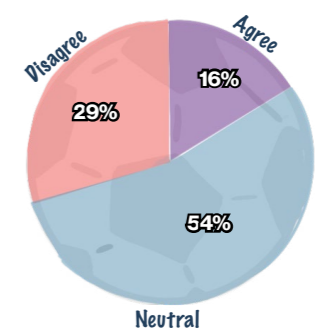
More young people at Hillhead High School prefer to spend free-time with others than alone.

40% of young people at Hillhead High School want to spend their free-time with others while only 16% want to spend free-time alone. Older age-groups tend to be more likely to say they prefer spending time alone.

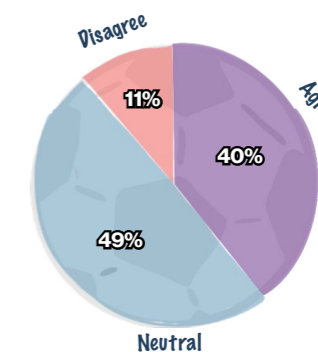
Around half of respondents are neutral about spending time alone or with others.

This highlights the need to ensure all ages have a range of options when choosing how to spend their free time.

How many young people would like to spend their free-time alone



How many young people would like to spend their free-time with others:



Why is play important to young people?

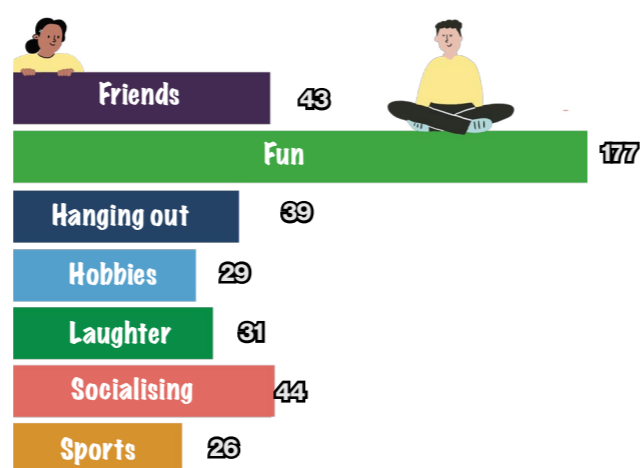
When asked what play means to young people, the most frequent response is **fun** followed by **socialising** and **hanging out**.

The words young people associate with play are very positive at Hillhead High school. With words and phrases like **spending time with friends and expressing yourself**, it's clear that play is an important opportunity to **build relationships** and create an environment that contributes to young people's **wellbeing**. Many talked about play as an opportunity to play **games and sport**.

Understanding what's important in play for young people highlights what we can do to **improve access, space and quality** for places designed for play.

At Hillhead High school, the most common affect of play was feeling of being **calm, relaxed, happy and joyful**. There were many who said that play gives us a chance to **be in control** suggesting play creates a feeling of autonomy and agency in their life.

What 'play' means to young people



160 said **Happy**
 145 said **Calm/Relaxed**
 37 said **Joy**

Statements on quantity

44% of young people say there are **lots of places** to spend their free-time outside while 48% feel like there are **only some places** and 9% feel like there is **nowhere at all** to spend time outside. With 57% having access to only some or no places outside, the area may need more good quality places and opportunities to play.

When asked about structured play such as **clubs and activities**, 53% of respondents said that **they go to them**, 32% of respondents said that **they know about them, but do not go**. 74% of respondents said that you **have to pay** for activities, so this may be one reason why so many know about activities but don't go.

15% of young people responded saying they **don't know of any clubs** outside of school. S4 and S6 were more likely to not know about any clubs at all while S1-3 are more likely to go to clubs. Older year-groups are more likely to know about clubs but not attend possibly due to the perception that clubs in the area tend to be paid.

As 74% say you have to pay to access clubs and activities, this presents an opportunity to increase access to free, enriching activities for young people to increase the uptake of structured play.



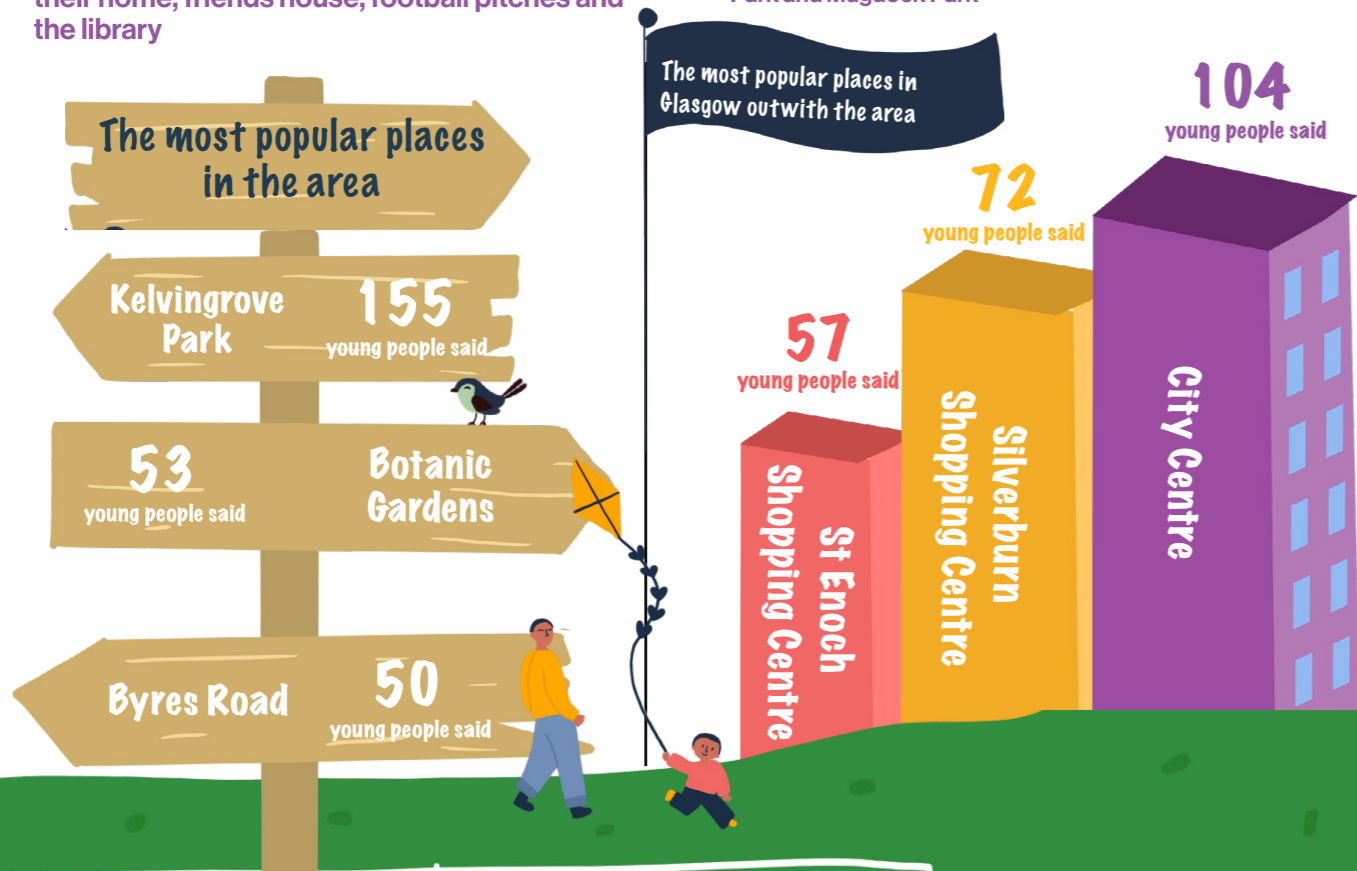
Are there are lots of places for young people to go in the area?



Where do young people go?

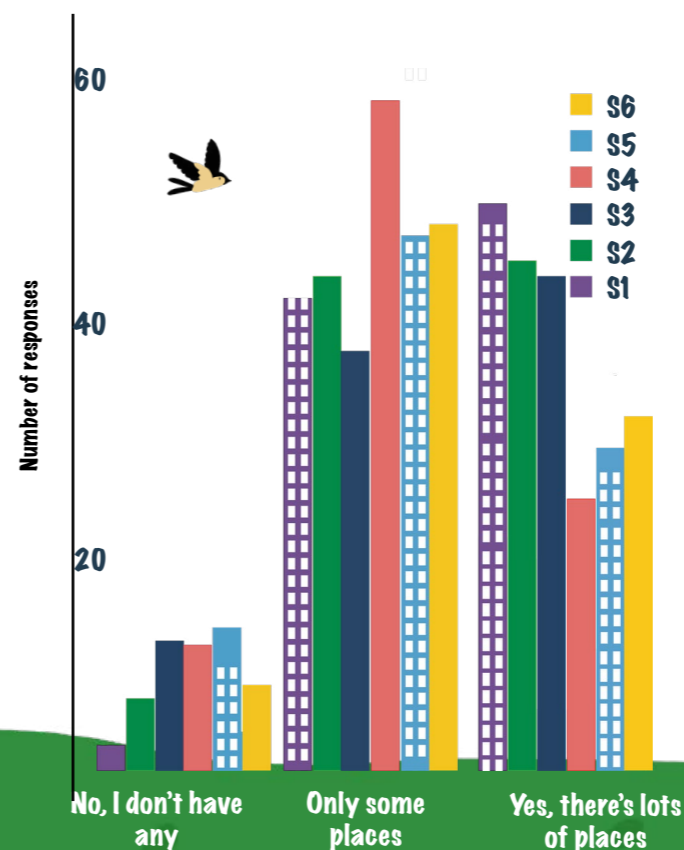
Below are the most popular places in their area. Other places mentioned in the area include: **their home, friends house, football pitches and the library**

Other local places mentioned outwith their area included: **Braehead Shopping Centre, the Clyde, Shawlands, Pollok Park and Mugdock Park**



How it differs between ages

In your local area, are there enough places to spend your time?



S4 in particular feel like there are **not enough spaces** for them. S1-3 are generally more positive and say there are **lots of places** for them.

Overall, S1-S3 are more optimistic about places to go and have fun in their area.



What makes a good place for young people?

At Hillhead High School, young people tend to agree that they feel **safe and comfortable** in their spaces.

Overall 46% **feel comfortable**, 21% **feel uncomfortable** and the remainder don't feel strongly either way.

When asked about equipment, nearly two-thirds said the places they have access to are in **good condition**. However, S4-6 tend to have a more negative view of the places they spend time. Just under half said the places they go **are not clean**. Older year groups are even more dissatisfied with the level of cleanliness in their spaces.

Young people are generally positive about the **range of activities** available in the area. S4-6 tend to be less positive suggesting spaces might be less suited to older year-groups.

When asked about equipment, 37% said the equipment they have access to **seems fine**, which suggests that 63% think access to equipment **could be improved**.

And looking at the quality of equipment: 36% said that it **needed repair**, 27% said it **needed replaced**, 34% feel there is **not enough equipment** and 48% said that the **equipment needs cleaned**.

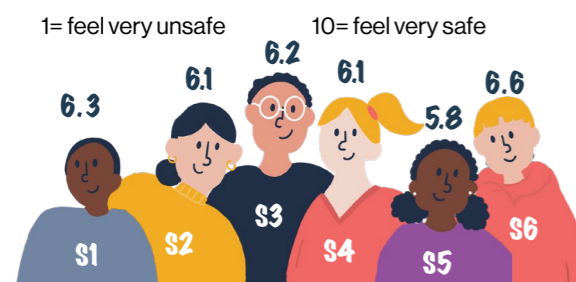
45% said **repairing equipment** would make their area more **fun and engaging** suggesting additional efforts should be prioritised to improve the quality of equipment for young people. **Broken equipment and dirty places** are highlighted frequently with **Ruchill Park** being called out in particular as a problem.

Scoring how comfortable they felt out of 10

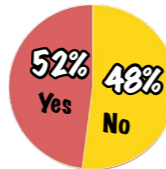


Scored on average just over 5

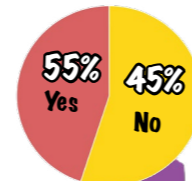
Scoring how safe they felt out of 10



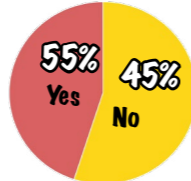
The places I go feel clean



The places I go are in good condition



There are lots to do in the places I go



"I would say the equipment needs to be replaced as sometimes it's broken or sometimes there's not enough"

"I think there should be more equipment in Kelvinhall and just more basketball courts in the city as a whole"

What is the equipment like in the spaces that you go to?

48% said **Needs cleaned**

37% said **It seems fine to me**

36% said **Needs repaired**



What makes a place feel unsafe?

A **lack of lighting** was voted as the biggest factor making places feel unsafe for young people at Hillhead High School.

47% of young people said they **feel safe**, 15% said they **feel unsafe** and the rest didn't feel strongly either way. Older year-groups tend to say places are less safe than others.

When asked the details about what makes a place feel unsafe or uncomfortable, the responses consisted of 4 main themes: **lack of light, other people, broken/unclean equipment and the City Centre and nightlife**.

The **nightlife and alcohol consumption** in the City Centre is repeatedly called out as something that makes young people feel unsafe. In contrast, many also said the City Centre and St Enoch Centre is their favourite place to go.

Kelvingrove Park was also highlighted as a place where young people go but as it gets dark as early as 4pm in Winter, it's rarely usable in winter months.

Adding lighting was repeatedly called out by young people at Hillhead High School as a way to make their spaces feel safer and more comfortable.

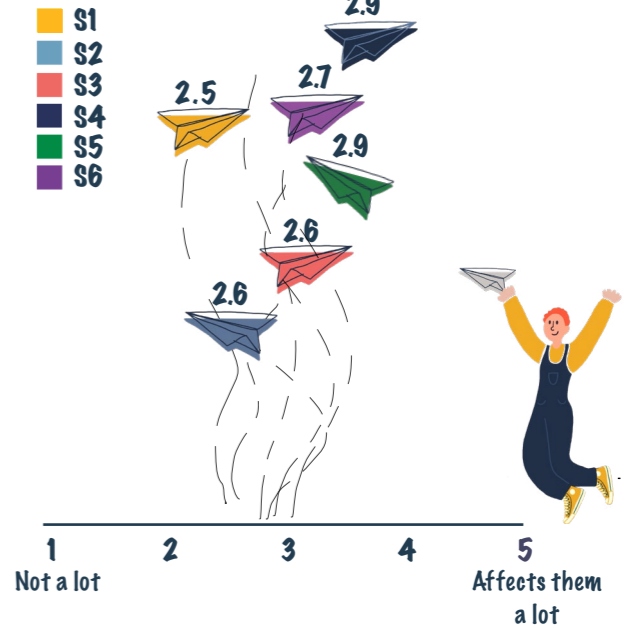
"At the Kelvingrove pitch the fences are all broken and there are no nets there in the goals."

"I feel unsafe in any park or street at night except for in the summer because it's light"

"Some of the places have broken equipment. It would make the space better if the equipment was repaired"

Scoring how other people in the spaces affect them out of 5

Average scoring per year



Travelling to places for young people

92% of respondents said that the places in their area are easy to get to. When asked about getting around, **walking** was the most frequent response suggesting that for many young people they have places to go within walking distance. **Public transport** came second as a way of getting around while **getting a lift** came third.

Around a third of pupils said they **get a lift** to access the spaces they go to. This is a significant number, suggesting there are few alternative options or that it's a preference in the area.

Only 52 young people **cycle** to the places they play. 25 **scoot or skate** and 32 **don't go anywhere** to play.



Barriers towards play

When asked what barriers young people from Hillhead High School feel they have that stops them from playing, **homework** was voted highest.

Feeling like they don't have time was voted second highest, followed by **other people in their place**, then **lack of spaces and money** were joint fourth.

Feeling like there's **not enough time** is more common amongst S4-6 and S4-5 tend to have more of a problem with **other people in their spaces**.

Top 3 barriers to enjoying free time



“I would like the Glasgow city council to sort out the amount of rubbish that is everywhere in Glasgow”

“I would like to see more lights added in the city centre as it's quite dark. Also, more places where teens could hang out”

“The time of day is a barrier, for example at night I do not feel safe going out by myself anywhere”



Nature & Seasons

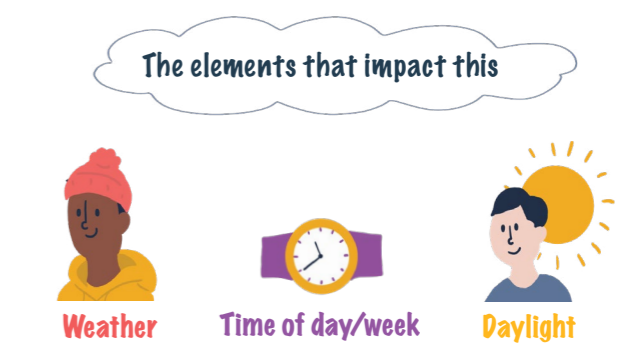
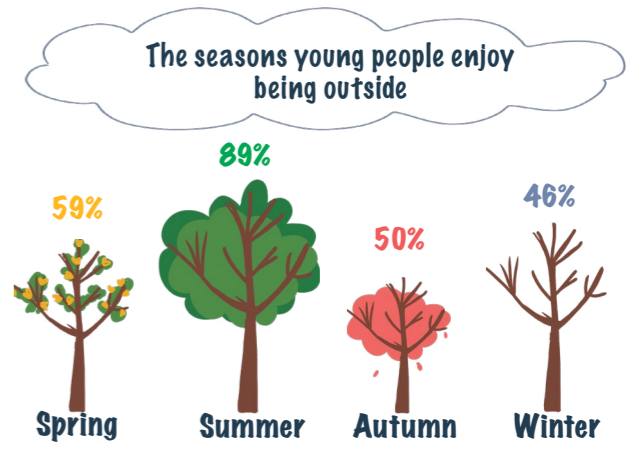
62% of respondents said that **nature is very important** to them while 29% say they **do not mind** and 9% say they **do not care at all**.

42% said more green spaces would make the **area more fun and interesting**. This highlights the importance of ensuring there are plenty of opportunities for young people to connect to nature.

When it comes to spending time outdoors, **weather** has the largest impact. **The time** is also a big factor, whether it's midweek, the weekend, summer or winter plays a big part in young people's decision to go outside.

Summer is the favourite season to spend time outside. Next is **Spring**, then **Autumn** and then **Winter**. This highlights the need to ensure there is space and light for young people across all seasons of the year.

This highlights the importance of providing warm places to play even in the colder months.



What do they need from their spaces

When asked what young people want more of, most asked for **cleaner places** followed by **more places for people my age and more places to eat**. Some of the places people asked for include **sport pitches**. The **pitches and nets in Kelvingrove Park** were called out as particular places they would like to see improved.

When asked what changes would make the area more fun, 43% said adding **more security** and many asked for more **street cleaning**. Many also asked for more cheap or free

activities. Echoing earlier findings, 144 respondents asked for **better communication around existing places and activities** for young people. Over half of the young people who took part said that they would be open to being involved in discussions in the future, with a decent proportion saying it would depend on the topic.

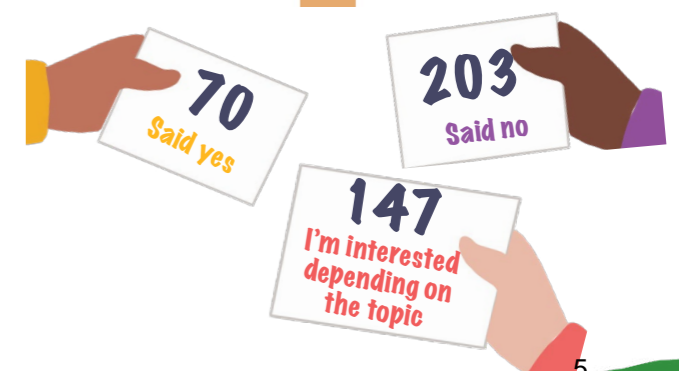
This reinforces that public bodies should embed a flexible approach when considering engaging with young people. They may not always wish to participate but when they do they should have a right to shape decisions about their spaces and their future.



What do you think the council should be doing more of for your spaces:



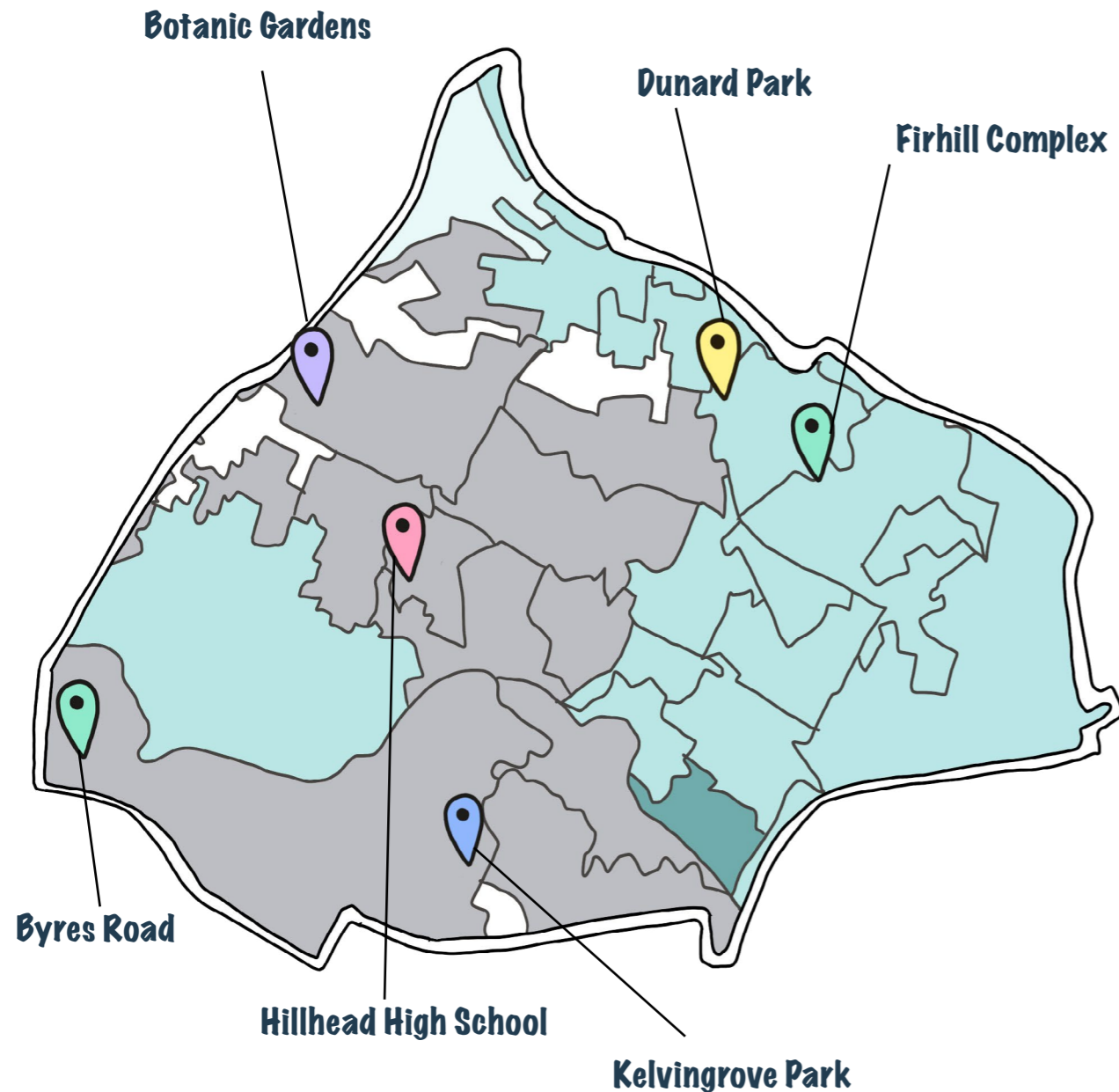
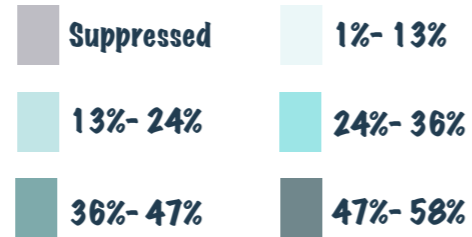
Young people were asked if they'd like to be involved in the future



Child Poverty Data

This map is taken from Glasgow City Council's child poverty dashboard, and contains levels of relative child poverty across the city. It shows that a lot of the more popular places young people go are in areas where there is a lower rate of child poverty in Hillhead.

Percentage of child poverty



Conclusion

Overall, we got responses from 47% of the young people at Hillhead High School. It is clear that young people have a **wide range of valuable contributions that could help us improve spaces for young people and the communities which they help build.**

Access to **safe, warm places with a mix of activities** has been clearly identified as a major contributor to young people's wellbeing and physical health.

Many of the places identified as good places to spend time in their area are informal spaces like **Kelvingrove park and the Botanic Gardens.** This shows the importance of maintaining and improving green spaces around Hillhead High School.

15% don't know of any clubs in the area. Many young people are missing out on chances to grow and express themselves outside of school.



74% of pupils are put off by **having to pay to attend clubs** showing that money could also be a barrier for young people at Hillhead High School.

48% of children at Hillhead High School say there are **only some spaces** that they can go to suggesting more places could be provided for young people in the area.

Generally young people felt safe and comfortable in the spaces that they go to. However when discussing what made them feel unsafe a **lack of lighting** in the spaces were the main concern.



This highlights a demand from young people to provide well-lit places for them to spend their free-time.

The biggest barriers to play were **homework and having a lack of time** but many in older age-groups also said that **money and a lack of places** to go heavily impact how they spend their free time.

As for the places that are available, poorly maintained places



were highlighted as a common issue for young people and it was suggested that the council **repair equipment and clean places** as a way to improve them.

For most, **travelling to places** is not an issue and there are plenty of places to spend time despite some places not always being of the highest quality.

With this rich, wide-ranging input, we now have a much clearer picture of what young people look for in a place that is **safe, accessible and of a good quality.** We've also learned how much we can learn from talking to young people, **learning from their ideas** and building a nuanced picture of our neighbourhoods and how they're used.

From this, we now have a range of clear recommendations and Hillhead High School has developed a mature dialogue and set of ideas that can help inform better play areas in Hillhead.

Centre for Civic Innovation

Glasgow City Council
The Wedge, Office 7
1066 Barrhead Road
Glasgow G53 5AB

 cciglasgow.org

 [@CCIGlasgow](https://twitter.com/CCIGlasgow)

 [@cciglasgow](https://www.instagram.com/cciglasgow)

