

Play Sufficiency Assessment

King's Park Secondary School



Play Sufficiency Assessment: King's Park Secondary School

Background

Play is central to young people's enjoyment of life and essential to their physical and emotional well-being and their healthy development.

In May 2023 new regulations came into force which mean that planning authorities must assess the sufficiency of play opportunities in its area for young people. The Play Sufficiency Assessment (PSA) is intended to provide an overall picture in terms of the current provision and distribution of outdoor play opportunities across the whole of a local authority area.

As part of these new regulations Glasgow City Council has a statutory requirement to engage with young people across the city to understand more around the current opportunities to play, their experiences whilst playing in the city as well as understanding what their current barriers to play are. Key insights will be used to form part of the evidence report for the City Development Plan and will be the start of an ongoing conversation with young people about what it is like to live, learn and play in Glasgow.

Hearing Young People's Voices

The participation of King's Park Secondary School students in this citywide discussion has made a significant impact, providing invaluable insights that help authorities grasp the current realities and challenges faced in using local spaces. Their input has enriched our understanding of the obstacles hindering play in their community, and has shed light on the additional resources required to support the optimal physical and healthy development of young people.

These reports are now being compared Citywide to get an understanding on equalities and City Development Plans going forward.

The honesty and contribution of the young people are greatly valued and have proven to be monumental at this stage of the conversation.

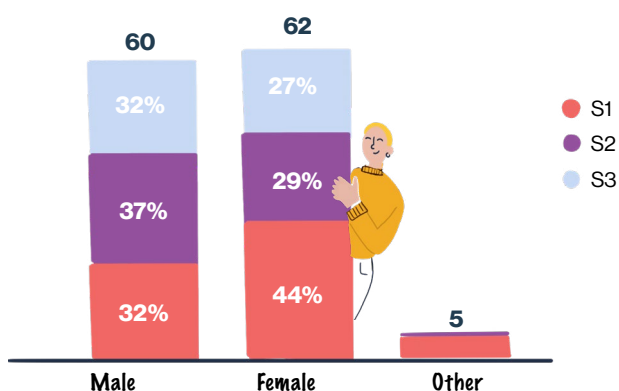


Demographics

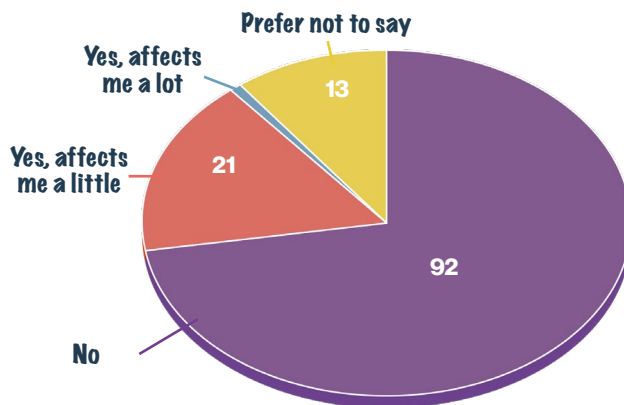
In total 127 pupils across all six year groups took part: over a sixth of the young people attending King's Park Secondary School.

For each school, the link was shared with a key contact who then arranged for this to be rolled out across the school in a way that worked for them

Young people who answered the survey



Young people who consider themselves to have a health condition or disability affecting their day-to day life



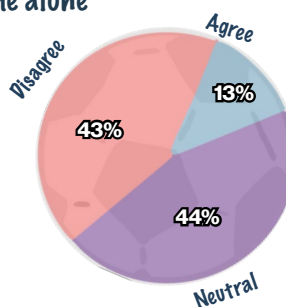
22 pupils (17%) said that their day-to-day lives are affected by a health condition. Those with health conditions will have different needs

What is play

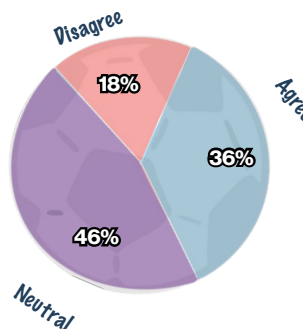
Nearly half of all young people at King's Park Secondary School don't feel one way or another about spending time with others or alone. 36% of young people want to spend free-time with others while only 13% want to spend free-time alone.

S2 voted slightly more than other year-groups for preferring to spend time alone. This suggests there should be spaces to spend time alone and together for all age groups as it will give young people access to places that are suited to them.

How many young people would like to spend their free-time alone



How many young people would like to spend their free-time with others:



Why is play important to young people?

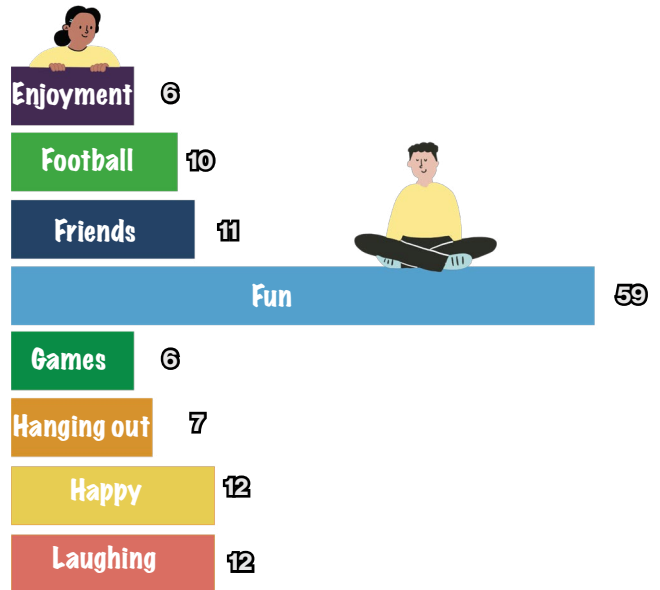
When asked what play means to young people, the most frequent response is **fun** followed by **friends and happy**.

The words young people associate with play are very positive at King's Park Secondary School. When talking about play, young people describe it as a chance to **spend time with others and express themselves**. It's clear that play is an opportunity to boost relationships some said it **creates trust** and an opportunity to bond with those who really know you.

Understanding what's important in play for young people highlights what we can do to **improve access, space and quality** for places designed for play.

At King's Park Secondary School, the most common affect of play was a feeling of being **happy, relaxed and joyful**. Some said that it gives them a chance to **have a break and clear their head** from the other pressures in their life. Others described a **chance for excitement** and some a **chance to find comfort**.

What 'play' means to young people



“Play means being with friends, doing what you love and having fun.”

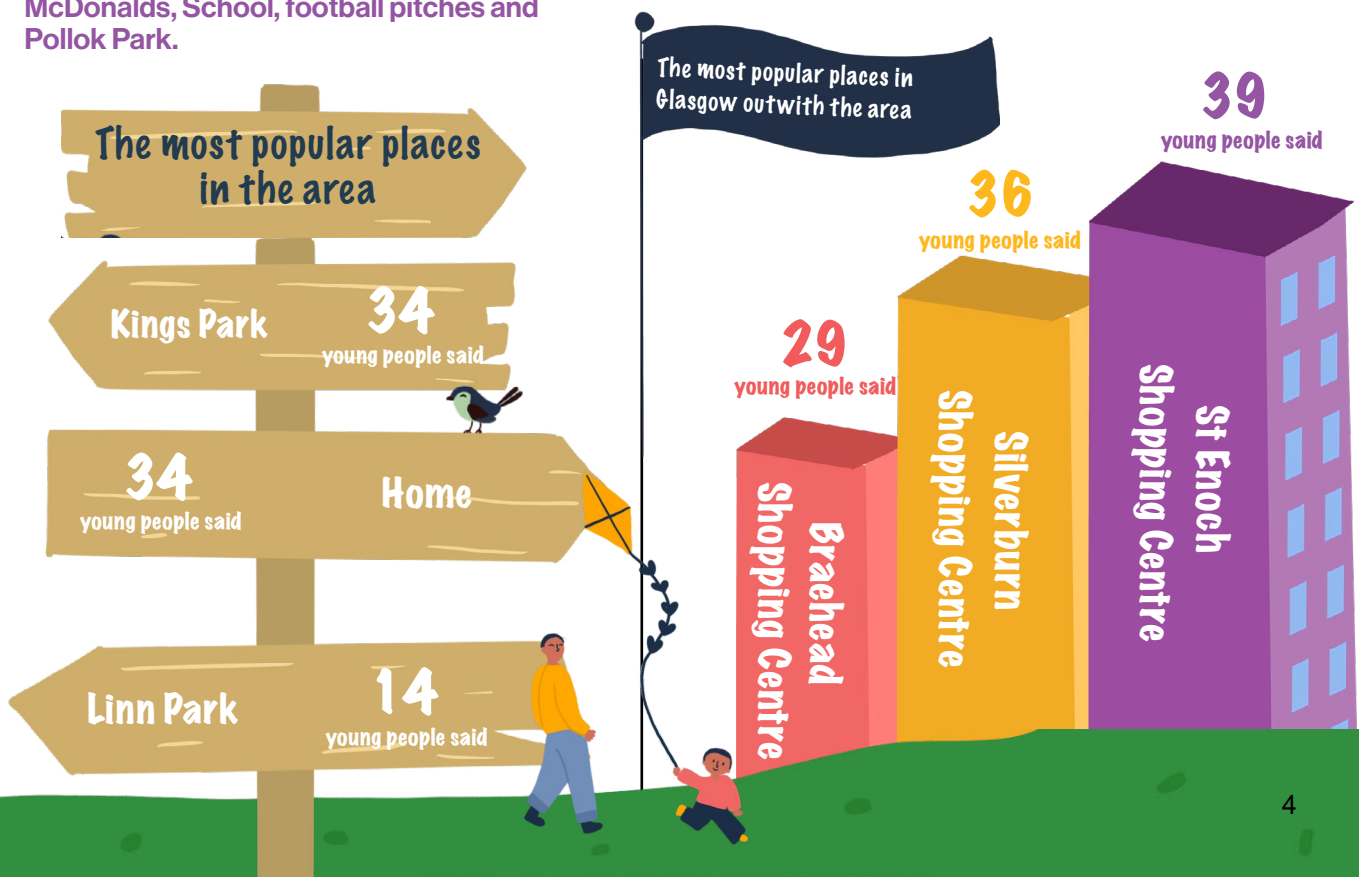
“To have fun, be active and to go out”



Where do young people go?

Below are the most popular places in their area. Other places mentioned in the area include: **McDonalds, School, football pitches and Pollok Park**.

Other local places mentioned outwith their area included: **Queens Park, Shawlands, and Flip Out**.



Statements on quantity

57% of young people say there are **only some places** to spend their free-time while 35% feel like there are **lots of places** and 8% feel like there is **nowhere at all** to spend time. With 65% having access to only some or no places, the area may need more good quality places and opportunities to play.

When asked about structured play such as **clubs and activities**, 60% of respondents said that **they go to them**, 28% of respondents said that **they know about them, but do not go**. 64% of respondents said that you **have to pay** for activities, so this may be one reason why many know about activities but don't go.

12% of young people at King's Park Secondary School said they **don't know about any clubs outside of school**. Older year groups tend to be less likely to know about clubs. S1 are more likely to go to clubs than S2-3 and S3 are least likely to know about clubs at all. This suggests there's an opportunity to increase awareness about clubs for older year groups.

Are there are lots of places for young people to go in their area?



"I'd like the parks to change around Glasgow as they are always dirty and are always boring"

"At Toryglen pitches add goals to grass park and floodlights"

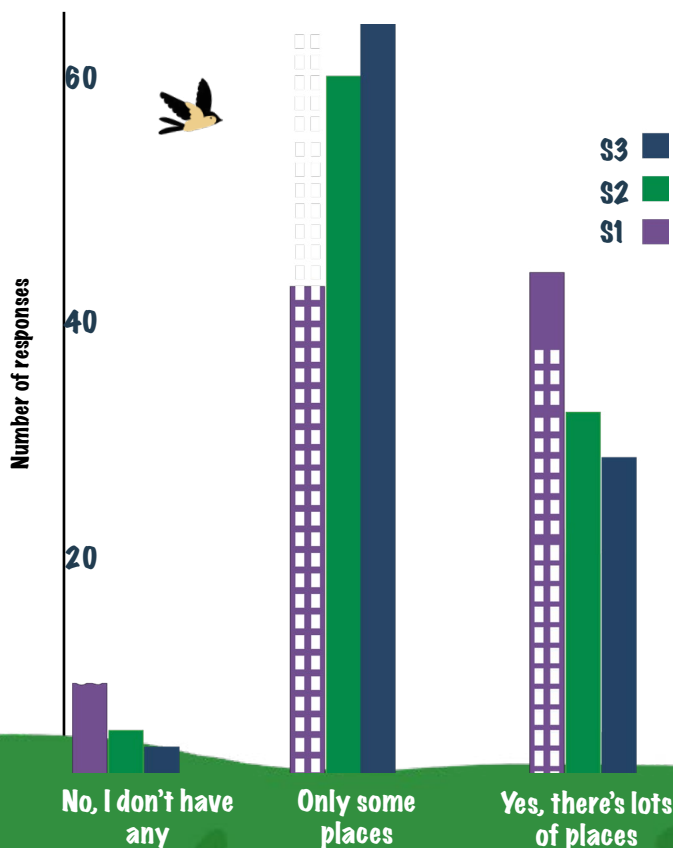
"There needs to be more green spaces that are nice quiet places to relax and enjoy the birds sounds. More football areas and more sports too"

How it differs between ages

In your local area, are there enough places to spend your time?

Just over 40% of S1 pupils said they have **lots of places to go** while other years were much more likely to say there are **only some places**.

S1 were more optimistic about the opportunities and spaces that they have in there area compared to other years.



"Places are dirty and need to be replaced and there is not enough equipment for people like my age to play on etc gym equipment pull ups."

What makes a good place for young people?

Generally young people at King's Park Secondary School feel safe and comfortable in their spaces.

In young people's spaces, 37% feel comfortable, 23% feel uncomfortable and the remainder don't feel strongly either way.

As pupils get older, they're more likely to say their spaces are not clean or in a poor condition. Generally older year groups tend to be less satisfied with the condition of their spaces.

Generally, younger year groups say they have more to do than the older pupils suggesting there could be more opportunities to play catered to older pupils.

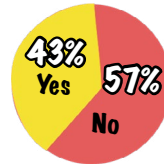
When asked about equipment: 32% said the equipment they have access to seems fine; 44% think that it needs repaired; 33% think it needs replaced; 33% say there is not enough; and 54% say it needs cleaned.

Given only 32% are happy with the amount of equipment they have access to, this indicates more equipment of a higher quality could be provided at King's Park Secondary School.

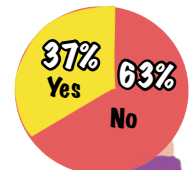
Ideas around King's Park Secondary School tend to mention the quality of parks and particularly the cleanliness and condition of King's Park.



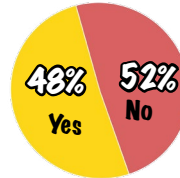
The places I go feel clean



The places I go are in good condition



There are lots to do in the places I go



"The City Council isn't doing enough to maintain the parks. Most of the equipment needs repaired and the roads are covered in potholes."

"There are not enough trees, clean up broken glass and a lake with clean water"

Scoring how comfortable they felt out of 10

1= feel very unsafe 10= feel very safe



Scored on average just over 5

Scoring how safe they felt out of 10

1= feel very unsafe 10= feel very safe



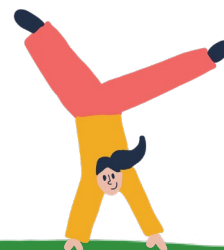
Scored on average just over 5

What is the equipment like in the spaces that you go to?

54% said
Needs cleaned

44% said
Needs repaired

33% said
Needs replaced



What makes a place feel unsafe?

At King's Park Secondary School just over a third of pupils **felt safe** and **comfortable** in the places they use.

23% of young people reported feeling **unsafe**, with 36% feeling **safe** and the remainder didn't feel strongly either way.

When asked what makes a place feel unsafe or uncomfortable, the responses consisted of 3 main themes: **other people, the environment and the time of day.**

One of the biggest concerns around safety is **other people**, especially in overcrowded places highlighting the need for more safe places for young people.

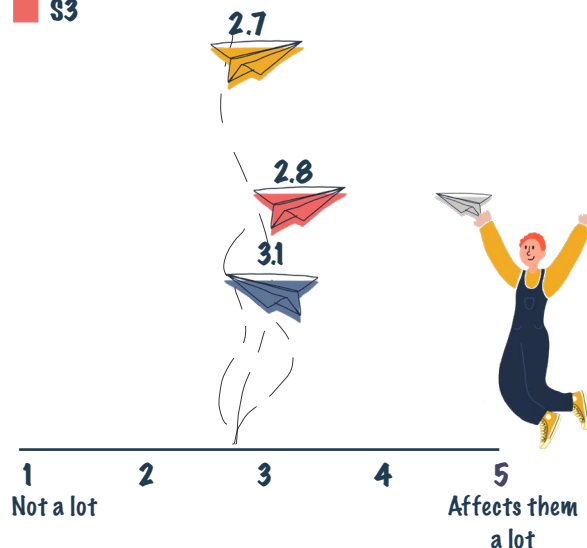
Night and places with **rubbish, broken equipment and too much noise** were also highlighted as an issue. This suggests quiet, dedicated spaces for young people would help a lot with feelings of safety for young people.

Some places were called out as particularly uncomfortable. Toryglen Park, King's Park and Castlemilk Park were all highlighted as places that didn't feel comfortable.

Scoring how other people in the spaces affect them out of 5

Average scoring per year

- S1
- S2
- S3



“Kings park/Linn park makes me feel unsafe because of the young kids that drink alcohol.”

“I don't feel safe in Toryglen because of the people”

Travelling to places for young people

96% of respondents said that the places in their area are easy to get to.

When asked about getting around, **walking** was the most frequent response suggesting that for many young people they have places to go within walking distance. **Public transport** came second as a way of getting around while **getting a lift** came third.

Just under a third of pupils are relying on **getting a lift** to get around. This is nearly as many as use public transport suggesting there's no alternative options or it's simply a preference in the area.

9 pupils **cycle** to get around. 4 **scoot or skate** and 9 **don't go anywhere** to play.



Barriers towards play

When asked what barriers young people from King's Park Secondary School feel they have that stops them from playing, **homework** was voted highest.

Feeling like they don't have time was voted second highest, followed by lack of places to go, other people in their spaces, and societal expectations

S2 tended to vote more for societal expectations, homework, money and a lack of time as barriers.

Top 3 barriers to enjoying free time



“The amount of people are a barrier as well as the broken equipment and the sounds”

“The equipment in Kings Park is unsanitary and vandalised beyond repair”

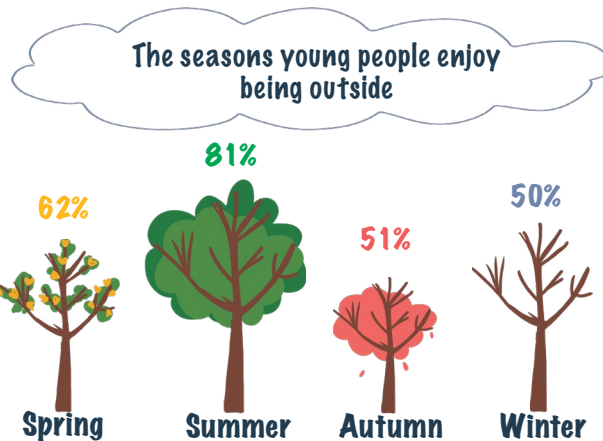


Nature & Seasons

49% of respondents said that **nature is very important** to them while 41% say they **do not mind** and 10% say they **do not care at all**.

When it comes to spending time outdoors, **weather** has the largest impact. **The time** is also a big factor, whether it's midweek, the weekend, summer or winter plays a big part in young people's decision to go outside especially with daylight as a factor.

Summer is the favourite season to spend time outside. Next is **Spring**, then **Autumn** and then **Winter**. This highlights the need to ensure there is **space and light** for young people across all seasons of the year.



The elements that impact this



What do they need from their spaces

Cleanliness was the biggest issue in young people's places while there was also a desire to improve the condition of existing equipment and spaces. Young people also asked that they be included in decisions in their area.

40% said they'd like **more places for sport**, 28% said they'd like to see **more spaces for music and art**, 31% they'd like **more green spaces** and 35% said they'd like **better security** in their spaces. Any additions would make the area more fun and exciting. Many asked for investment in local football pitches.

When asked what young people want more of, most asked for **cleaner places** followed by **more shops and places to eat**, then **repaired equipment**.

Nearly half of the young people who took part said that they want to be involved in discussions in the future. Some said it would depend on the topic.

This reinforces that public bodies should embed a flexible approach when considering engaging with young people. They may not always wish to participate but when they do they should have a right to shape decisions about their spaces and their future.

What do you think the council should be doing more of for your spaces:



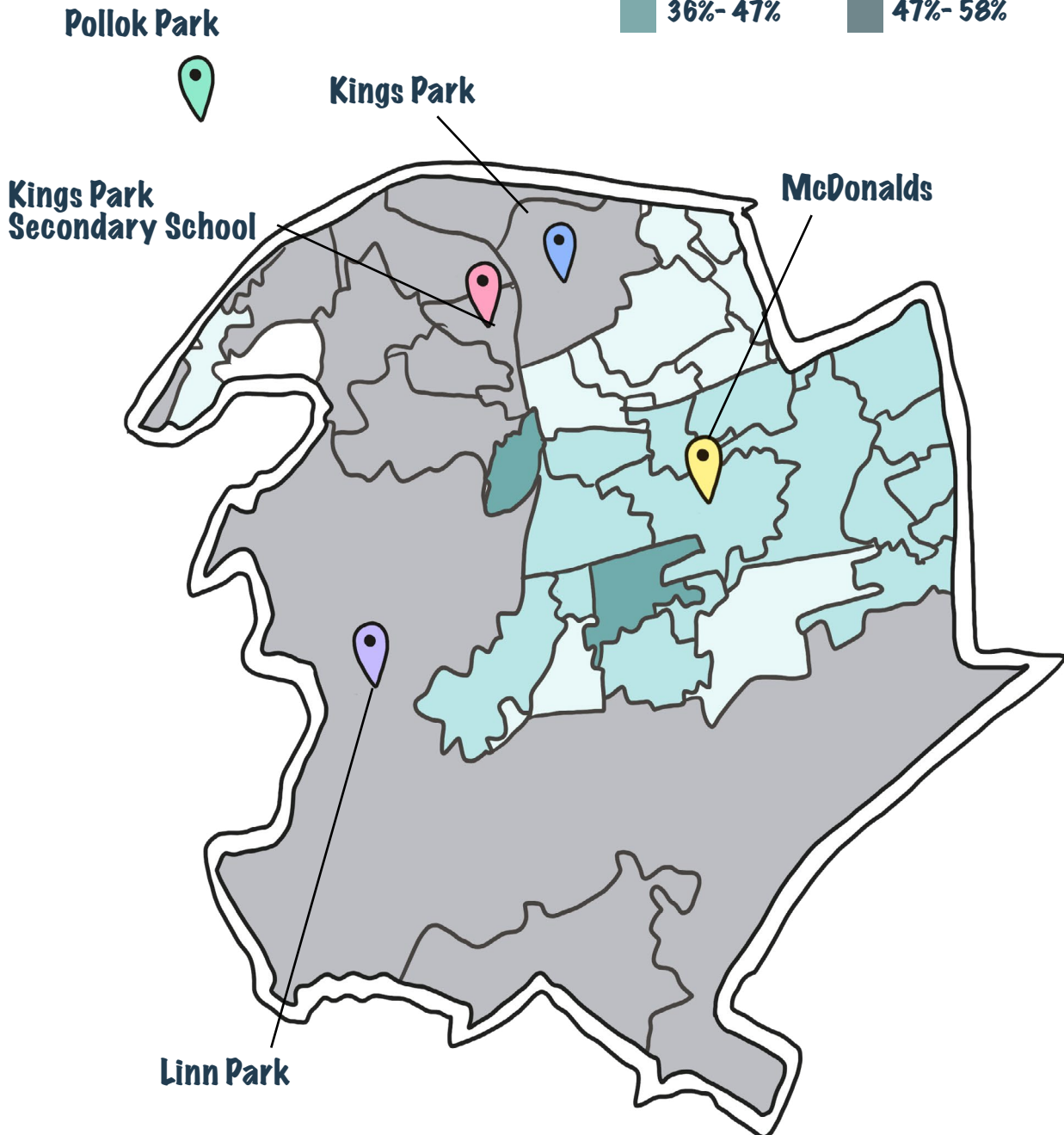
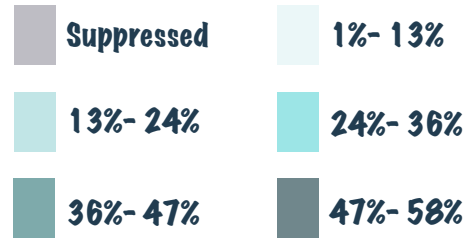
Young people were asked if they'd like to be involved in the future



Child Poverty Data

This map is taken from Glasgow City Council's child poverty dashboard, and contains levels of relative child poverty across the city. It shows that a lot of the more popular places young people go are in areas where there is a lower rate of child poverty in Linn

Percentage of child poverty



Conclusion

Overall, we got responses from 14% of the young people at King's Park Secondary School. It is clear that young people have a wide range of valuable contributions that could help us improve spaces for young people and the communities which they help build.

Access to **safe, clean** places with a **mix of activities** has been clearly identified as a major contributor to young people's wellbeing and physical health.

Many of the places identified as good places to spend time in their area are informal spaces like **Darnley, Football Pitches, Braehead shopping centre and Auldhouse Park**. This shows the importance of maintaining and improving both green spaces and public places for young people around King's Park Secondary School.

12% of young people at King's Park Secondary School **don't know of any clubs** outside of school.



Many young people are missing out on chances to grow and express themselves outside of school.

64% of pupils are put off by **having to pay to attend clubs** showing that money could also be a barrier for young people at King's Park Secondary School.

57% of children at King's Park Secondary School say there are **only some spaces** that they can go to suggesting more places could be provided for young people in the area.



Generally young people felt safe and comfortable in the spaces that they go to. However when discussing what made them feel unsafe a **lack of lighting** in the spaces were the main concern. This highlights a demand from young people to provide well-lit places for them to spend their free-time.



The biggest barriers to play were **homework** and having **other people in young people's spaces** but many also said that **societal expectations** were a barrier to play.

As for the places that are available, **poorly maintained places** were highlighted as a common issue for young people and it was suggested that the council **repair equipment and clean up spaces** as a way to improve them.



For most, **travelling to places** is not an issue and there are places to spend time despite some places not always being of the highest quality.

With this rich, wide-ranging input, we now have a much clearer picture of what young people look for in a place that is **safe, accessible and of a good quality**. We've also learned how much we can learn from talking to young people, **learning from their ideas** and building a nuanced picture of our neighbourhoods and how they're used.

From this, we now have a range of clear recommendations and King's Park Secondary School has developed a mature dialogue and set of ideas that can help inform better places for play.

Centre for Civic Innovation

Glasgow City Council
The Wedge, Office 7
1066 Barrhead Road
Glasgow G53 5AB

 cciglasgow.org

 @CCIGlasgow

 @cciglasgow

