

Play Sufficiency Assessment

Knightswood Secondary School



Play Sufficiency Assessment: Knightswood Secondary School

Background

Play is central to young people's enjoyment of life and essential to their physical and emotional well-being and their healthy development.

In May 2023 new regulations came into force which mean that planning authorities must assess the sufficiency of play opportunities in its area for young people. The Play Sufficiency Assessment (PSA) is intended to provide an overall picture in terms of the current provision and distribution of outdoor play opportunities across the whole of a local authority area.

As part of these new regulations Glasgow City Council has a statutory requirement to engage with young people across the city to understand more around the current opportunities to play, their experiences whilst playing in the city as well as understanding what their current barriers to play are. Key insights will be used to form part of the evidence report for the City Development Plan and will be the start of an ongoing conversation with young people about what it is like to live, learn and play in Glasgow.

Hearing Young People's Voices

The participation of Knightswood Secondary School students in this citywide discussion has made a significant impact, providing invaluable insights that help authorities grasp the current realities and challenges faced in using local spaces. Their input has enriched our understanding of the obstacles hindering play in their community, and has shed light on the additional resources required to support the optimal physical and healthy development of young people.

These reports are now being compared Citywide to get an understanding on equalities and City Development Plans going forward.

The honesty and contribution of the young people are greatly valued and have proven to be monumental at this stage of the conversation.

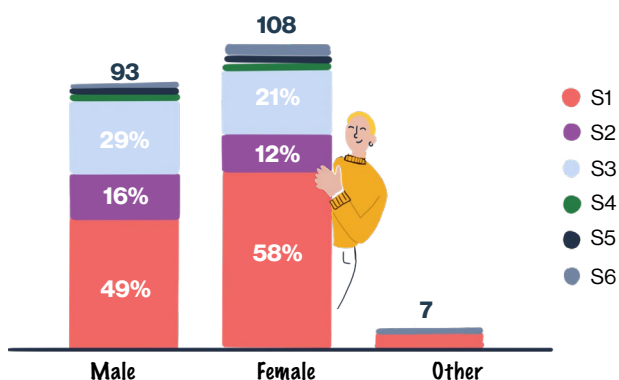


Demographics

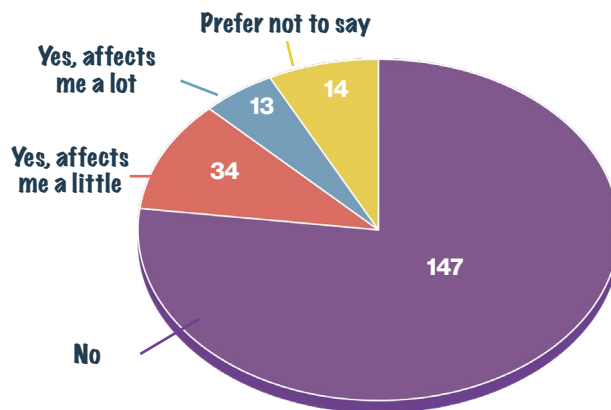
In total 208 pupils across all six year groups took part: just under a fifth of the young people attending **Knightswood Secondary School**.

For each school, the link was shared with a key contact who then arranged for this to be rolled out across the school in a way that worked for them

Young people who answered the survey



Young people who consider themselves to have a health condition or disability affecting their day-to day life



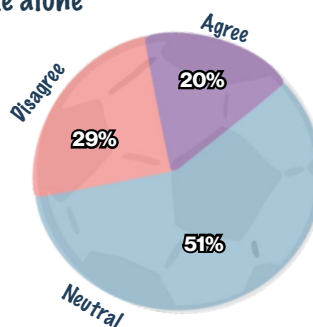
47 pupils (23%) said that their day-to-day lives are affected by a health condition. Those with health conditions will have different needs

What is play

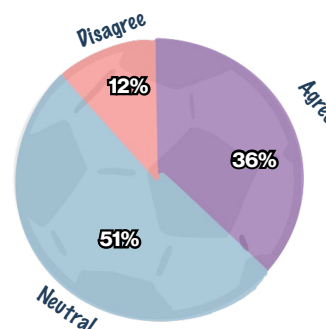
Over half of all young people at Knightswood Secondary School don't feel one way or another about spending time with others or alone. 36% of young people want to spend free-time with others while only 20% want to spend free-time alone.

There is similarity in preference of how they spend their time throughout each year group. This suggests more quiet spaces to spend time alone would be welcome amongst older year groups.

How many young people would like to spend their free-time alone



How many young people would like to spend their free-time with others:



Why is play important to young people?

When asked what play means to young people, the most frequent response is **fun** followed by **friends and hobbies**.

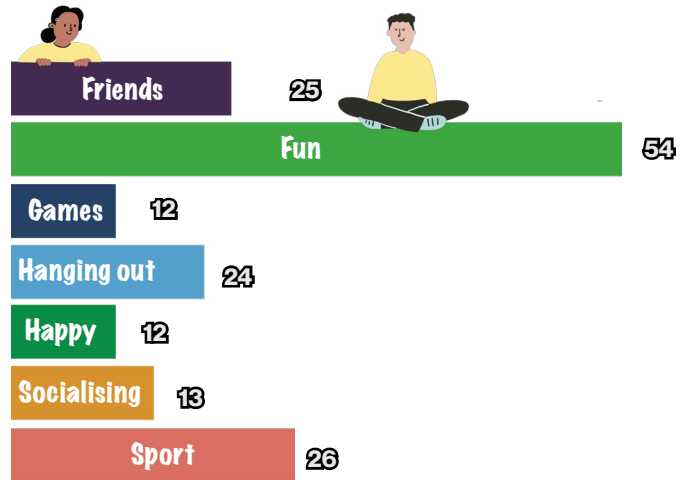
The words young people associate with play are very positive at Knightswood Secondary School. When talking about play, young people describe it as a chance to **socialise, spend time with friends and expressing themselves**. It's clear that play is an opportunity to use their imagination, do physical activity and offer them time to relax from school, creating an environment that contributes to young people's wellbeing.

Understanding what's important in play for young people highlights what we can do to **improve access, space and quality** for places designed for play. At Knightswood Secondary School, the most common affect of play was a feeling of being **happy, relaxed and joy**. Some pupils shared that they believe play keeps them **active, stress-free and satisfied**.

Pupils also shared that play makes them feel content outwith school, giving them time to themselves to feel stable which is key to ensure that every young person has the opportunity to feel this.

86 said **Happy**
52 said **Calm/Relaxed**
21 said **Joy**

What 'play' means to young people



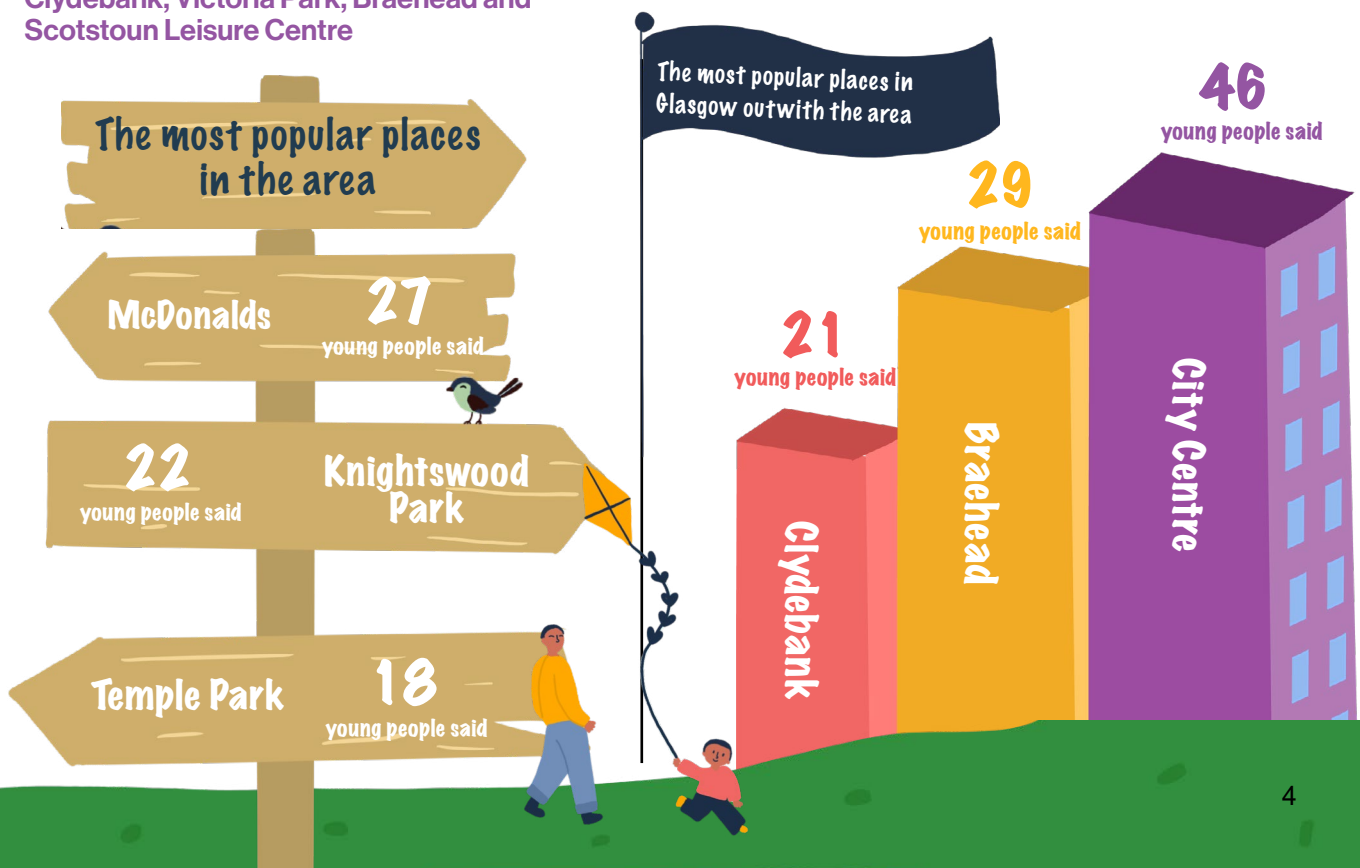
“Play makes me feel happy and lets me forget about worries”

“Play helps me connect with friends, feel healthy and lets me do things I like”

Where do young people go?

Below are the most popular places in their area. Other places mentioned in the area include: **Clydebank, Victoria Park, Braehead and Scotstoun Leisure Centre**

Other local places mentioned outwith their area included: **Silverburn, St Enoch, Kelvingrove and Drumchapel**



Statements on quantity

Over half (51%) of young people say there are **only some places** to spend their free-time outside while 42% feel like there are **lots of places** and 8% feel like there is **nowhere at all** to spend time outside. With 59% having access to only some or no places outside, the area may need more good quality places and opportunities to play.

When asked about structured play such as **clubs and activities**, 54% of respondents said that **they go to them**, 34% of respondents said that they **know about them, but do not go**. 73% of respondents said that you **have to pay** for activities, so this may be one reason why so many know about activities but don't go.

12% of young people responded saying they **don't know of any clubs** outside of school. Older year groups tend to be less likely to know about clubs compared to younger years. This suggests there's an opportunity to increase awareness about clubs for older year groups.

As the year groups get older, more respondents said that they know about clubs **but do not go**. This could be due to costs of activities, time or they feel there are no opportunities they feel they want to go to.

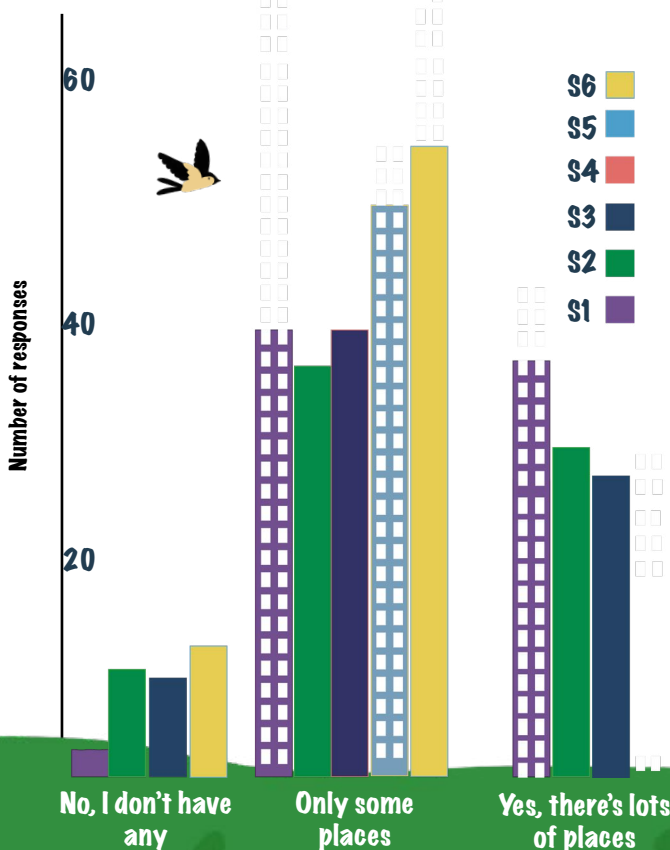


Are there are lots of places for young people to go in their area?



How it differs between ages

In your local area, are there enough places to spend your time?



S5-S6 in particular feel like there are not enough spaces for them.

Feelings of **not having any spaces at all** or **limited** is experienced more as the year groups get older. With S1-S3 being more positive that there are lots.



What makes a good place for young people?

At Knightswood Secondary School, just over half of respondents say that their spaces are **clean**, while just under half say their **spaces are not in a good condition**. Generally older year groups tend to be less satisfied with the condition and cleanliness of their spaces.

Younger years tend to say there's **lots to do in their spaces** while S3-6 are much more likely to disagree.

In young people's spaces 52% **feel comfortable**, 13% **feel uncomfortable** and the remainder don't feel strongly either way.

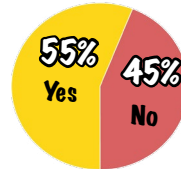
When asked about equipment: 45% said the equipment they have access to **seems fine**; 28% think that it **needs repaired**; 22% think it **needs replaced**; 19% say **there is not enough**; and 42% say it **needs cleaned**.

Given only 45% are happy with the amount of equipment they have access to, this indicates more equipment could be provided in the spaces around Knightswood Secondary School.

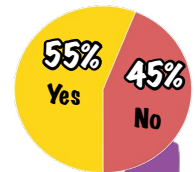
Broken equipment around Knightswood Park was repeatedly called out as a problem making people feel uncomfortable.



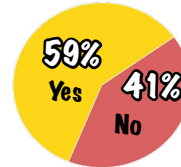
The places I go feel clean



The places I go are in good condition



There are lots to do in the places I go



“After school it's dark and Swings are old and need replaced and cleaned”

“Scotstoun needs looked at because the pitch and goals are all broke and nets are ripped”

Scoring how comfortable they felt out of 10

1= feel very unsafe 10= feel very safe



Scored on average just over 5

Scoring how safe they felt out of 10

1= feel very unsafe 10= feel very safe



Scored on average just over 5

What is the equipment like in the spaces that you go to?

45% said
It seems fine to me

42% said
Needs cleaned

28% said
Needs repaired



What makes a place feel unsafe?

At Knightswood Secondary School, just under half of the pupils **felt safe** and **comfortable** in the places they use.

14% of young people reported feeling **unsafe**, with 46% feeling **safe** and the remainder don't feel strongly either way. S3–6 are more likely to say they feel unsafe than younger years.

When asked what makes a place feel unsafe or uncomfortable, the responses consisted of 4 main themes: **other people, lack of lighting, environment and equipment**.

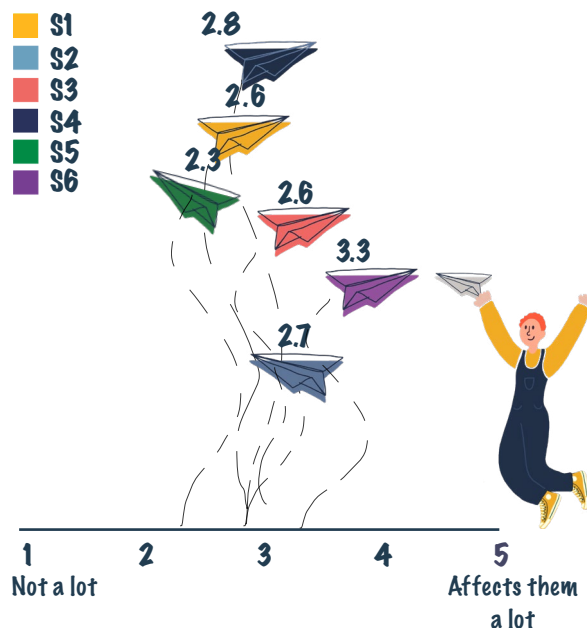
One of the biggest concerns around safety is **other people**, especially in overcrowded places as others can pose a threat or even harm others. This highlights the need for more quiet, dedicated places for young people.

The time of day and places with **broken or no lights** were also highlighted as an issue, meaning they avoid being outside during dark hours, **especially parks** or the **canal**. This suggests that in **Winter** seasons, the pupils have a shortened window of play outside in spaces due to lack of light. **Public transport** was also mentioned as a place where young people feel unsafe

Temple Park, Yorker Park, Knightswood Park and Blairdardie Park were called out as spaces they would like to see improved.

Scoring how other people in the spaces affect them out of 5

Average scoring per year



“People at night can be scary; I only have free times during the evening but due to the types of people that are around at night, I stay inside.”

“When out and about, I feel quite unsafe and uncomfortable because of crowds and people around me.”

“Some people on public transport when I have to go to school make me uncomfortable.”

Travelling to places for young people

92% of respondents said that the places in their area are easy to get to.

When asked about getting around, **walking** was the most frequent response suggesting that for many young people they have places to go within walking distance. **Public transport** came second as a way of getting around while **getting a lift** came third.

Just under half of pupils are relying on getting a lift to get around. This might suggest there's no alternative option or that it's a preference in the area.

27 young people **cycle** to the places they play. 5 **scoot or skate** and 7 **don't go anywhere** to play.



Barriers towards play

When asked what barriers young people from Knightswood Secondary School feel they have that stops them from playing, **homework** was voted highest.

Feeling like they don't have time was voted second highest, followed by **other people in their spaces, lack of spaces, then money and societal expectations** are joint fourth.

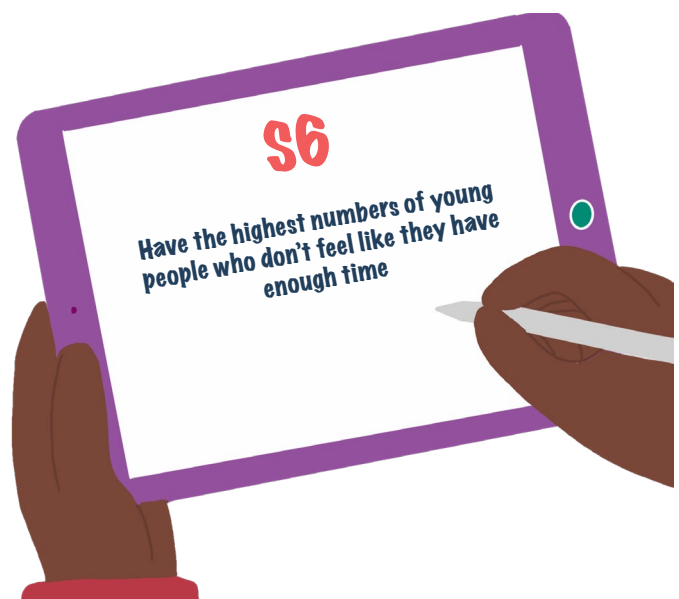
In general older pupils tend to say they have more barriers to play but some, like **money**, are particularly noticeable for older pupils.

Top 3 barriers to enjoying free time



“
Places need to be cleaner
”

“
Knightswood Park needs improved because it's so dark and you can barely see anything especially on winter nights when it gets dark quicker
”



Nature & Seasons

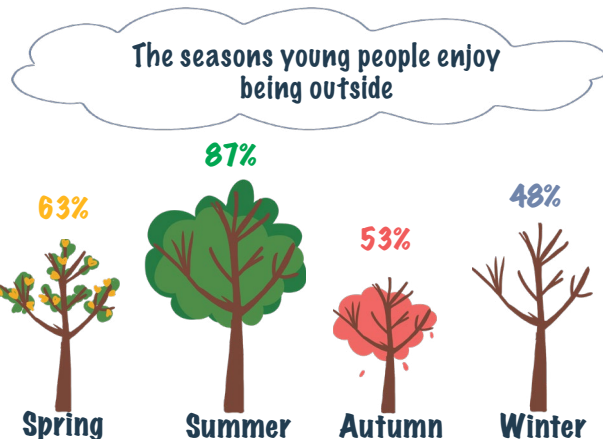
44% of respondents said that **nature is very important** to them while 43% say they **do not mind** and 13% say they **do not care at all**.

32% said more green spaces would make the **area more fun and interesting to engage with**.

When it comes to spending time outdoors, **weather** has the largest impact. **The time** is also a big factor, whether it's midweek, the weekend, summer or winter plays a big part in young people's decision to go outside especially with daylight as a factor.

This highlights an opportunity to provide spaces for Knightswood Secondary School pupils that they can use regardless of the weather

Summer is the favourite season to spend time outside. Next is **Spring**, then **Autumn** and then **Winter**. This highlights the need to ensure there is **space and light** for young people across all seasons of the year.



The elements that impact this



What do they need from their spaces

When asked what changes would make the area **more fun, cleaning the spaces was the highest voted response**.

Adding **more shops** was second highest voted, followed with adding **more places to eat** and **spaces for their age**. To make the area more fun: 39% said **repairing the equipment** that's already there. 32% said adding **more security** would make the places more fun and 39% said **more places for sport**.

When asked what young people want in their area pupils said they'd like **more things to do, more spaces to spend time and for equipment and spaces to be repaired**.

Some of the places mentioned included **Knightswood Park**.

Just under half of the young people who took part said that they want to be involved in discussions in the future. Some said it would depend on the topic.

This reinforces that public bodies should embed a flexible approach when considering engaging with young people. They may not always wish to participate but when they do they should have a right to shape decisions about their spaces and their future.

What do you think the council should be doing more of for your spaces:

72% said **cleanliness**

57% said **adding more things to do**

48% said **repairing equipment + building more**

39% said **asking their citizens their opinions/ thoughts**

34% said **adding more nature**

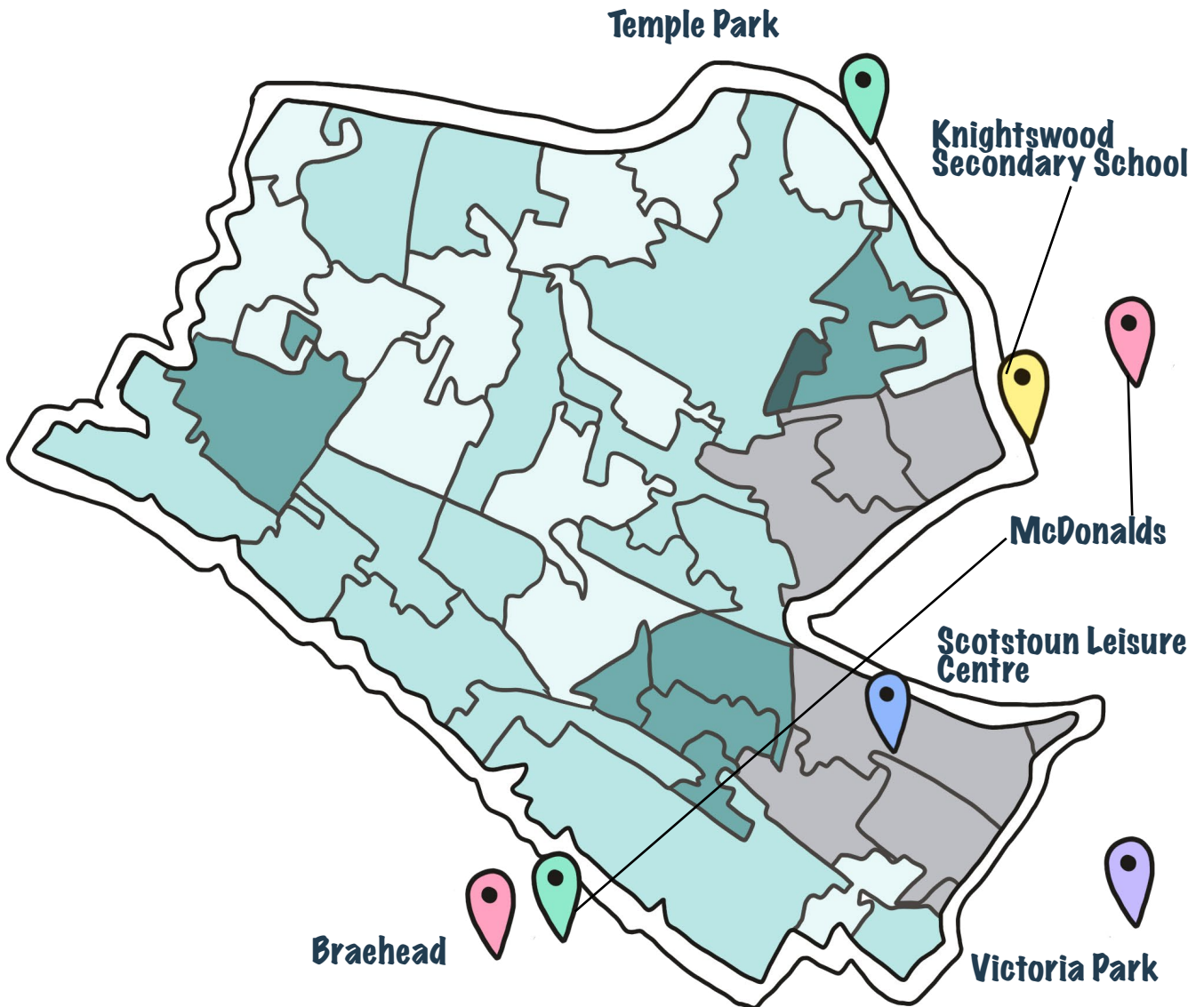
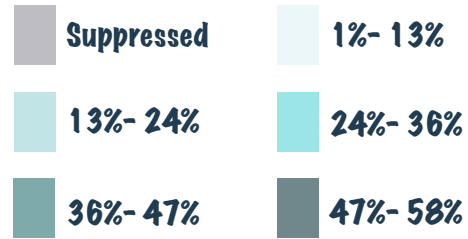
Young people were asked if they'd like to be involved in the future



Child Poverty Data

This map is taken from Glasgow City Council's child poverty dashboard, and contains levels of relative child poverty across the city. It shows that a lot of the more popular places young people go are in areas where there is a lower rate of child poverty in Drumchapel / Anniesland.

Percentage of child poverty



Conclusion

Overall, we got responses from 17% of the young people at Knightswood Secondary School. It is clear that young people have a wide range of valuable contributions that could help us improve spaces for young people and the communities which they help build.

Access to **safe, clean places with a mix of activities** has been clearly identified as a major contributor to young people's wellbeing and physical health.

Many of the places identified as good places to spend time in their area are informal spaces like various green spaces such as **McDonalds, Knightswood Park and Temple Park**, this reflects the fact that there is a lot of green space around Knightswood Secondary School.

12% of young people at Knightswood Secondary School **don't know of any clubs** outside of school. Many young people are missing out on chances to grow and express themselves outside of school.



73% of pupils are put off by **having to pay to attend clubs** showing that money could also be a barrier for young people at Knightswood Secondary School.

51% of young people say there are **only some spaces** that they can go to suggesting more places could be provided.

The biggest barriers to play were **homework and having a lack of time** but many young people also said that a **lack of places to go and other people in young people's spaces** can heavily impact how they spend their free time.



Generally young people felt safe and comfortable in the spaces that they go to. However when discussing what made them feel unsafe, **other people** was the main concern. This would suggest that around Knightswood Secondary School, there could be more safe places designated specifically for young people especially when it's dark or days are short.



As for the places that are available, **poorly maintained** places were highlighted as a common issue for young people and it was suggested that the council **repair equipment and clean up spaces** as a way to improve them.

For most, **travelling to places** is not an issue and there are plenty of places to spend time despite some places not always being of the highest quality.

With this rich, wide-ranging input, we now have a much clearer picture of what young people look for in a place that is **safe, accessible and of a good quality**. We've also learned how much we can learn from talking to young people, **learning from their ideas** and building a nuanced picture of our neighbourhoods and how they're used.

From this, we now have a range of clear recommendations and Knightswood Secondary School has developed a mature dialogue and set of ideas that can help inform better play areas in the area.

Centre for Civic Innovation

Glasgow City Council
The Wedge, Office 7
1066 Barrhead Road
Glasgow G53 5AB

 cciglasgow.org

 @CCIGlasgow

 @cciglasgow

