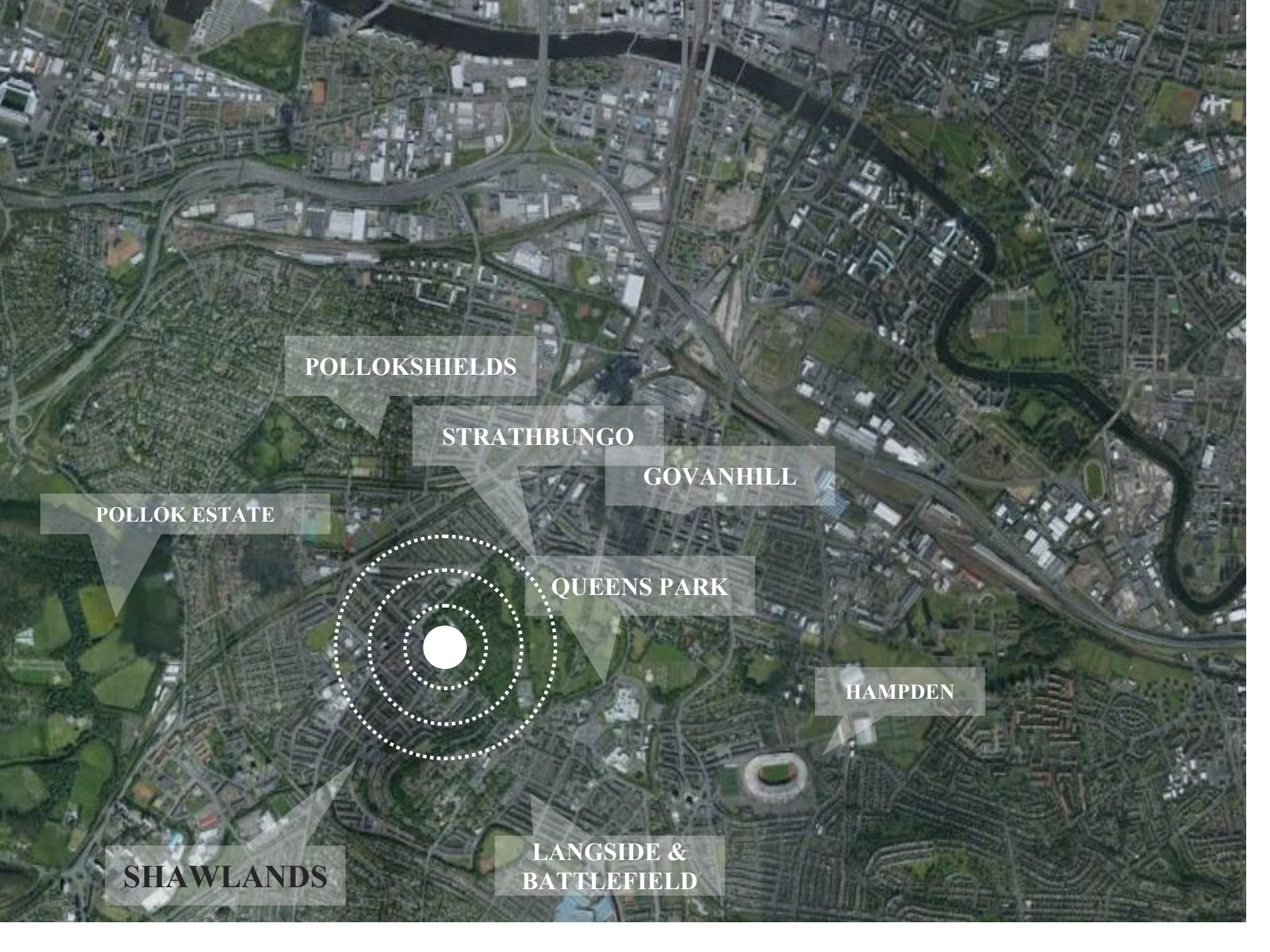


## Shawlands Civic Square Consultation / Glasgow, Shawlands

A new future for Shawlands!!





POLLOKSHIELDS

STRATHBUNGO

GOVANHILL

POLLOK ESTATE

QUEENS PARK

HAMPDEN

SHAWLANDS

LANGSIDE &  
BATTLEFIELD



## A new future for Shawlands!

### **Background**

*The Shawlands Town Centre Action Plan proposes to create a new civic square for the Southside in front of Langside Hall. This will form the exciting heart the Cultural Quarter of Shawlands that could act as a meeting space for local people and outdoor attractions.*

*The Pollokshaws Road/Langside Avenue junction at Shawlands Cross is a space which is already home to Langside Hall, the key civic building of the area, the Shed which has a long track record of live theatre, dance and craft events and Glad Café, a destination for live music and creative arts. The potential space could provide an important gateway to the Queens Park, the City Centre from the Southside and route to Scotland's national football stadium at Hampden. It could also bring the Queens Park into the heart of the Shawlands community.*

*The Council believe the space can help attract more visitors to both the town centre and the park. This document aims to introduce initial thoughts and ideas and provide a starting point for public consultation .*

*The Council want to know what the Shawlands and the Southside community think.*

*The potential civic square would be funded by Glasgow City Council as part of its 5 year £3.3M commitment to delivering the Shawlands Town Centre Action Plan. The target for completing its programme of projects is Spring 2017.*

A new future for Shawlands!

Recently, with the support of the Council and Glasgow Life, Collective Architecture and South Glasgow Heritage and Environment Trust has investigated the potential of Langside Hall and adjacent public spaces



Glasgow City Council wants to capitalize on that experience, moving the potential new square to the next stage of development



*Images: Collective Architecture in conjunction with South Glasgow Heritage and Environment Trust*

A new future for Shawlands!



It's all about  
Community!

*What do people need to know when designing a civic space?*

***The Civic Square Design Aims***

*A good design needs to be informed by the place's heritage and identity. It needs to renew the relationship between Langside Hall and its immediate context.*

*Development therefore should focus on creating a pedestrian oriented place...*

# CREATING PLACES FOR PEOPLE

- 1** *with a strong sense of character and identity*
- 2** *which will feel safe and pleasant to be in*
- 3** *that is easy to understand and to move around in*
- 4** *that is welcoming to all*
- 5** *that is adaptable to changing community needs and*
- 6** *which is resilient and easy to manage*

CREATING PLACES  
A policy statement on architecture and place for Scotland

FIRST LIFE,  
THEN SPACES,  
THEN BUILDINGS:  
THE OTHER WAY  
AROUND NEVER WORKS.



*A public space is the physical result of a variety of factors which shape our daily life.*

*The overlapping of many layers.*

*Some of these are tangible and physical (for instance microclimate, materials and form, the buildings and edges which define a space, furniture and traffic lights, kerbs, trees, parking spaces, paths, etc.);*

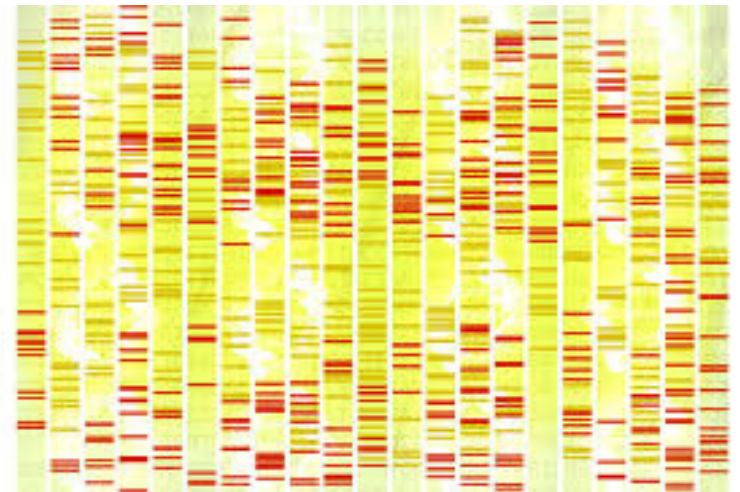
*Other aspects are more invisible (for instance the time of the day and seasons, the place's history, economics, cultural and demographic. There is also maintenance requirements, the way users move around, feel and react to a space).*

*In essence it's what we call the place DNA.*

*Before designing a place therefore it is important to understand its true identity and potential. Its specific DNA.*

*This is the knowledge needed to shape an appropriate design response.*

*Raffaele Esposito / Architect and Urban Designer*





*“DNA” under investigation by Glasgow City Council*



**DNA**

- *Demographic (Cultural and Economic)*
  - *Site history*
- *Existing edges: style, massing and character of the existing “street scene”*
  - *Interaction between buildings and public spaces*
- *Streetscape and public realm -formal and functional- qualities*
  - *Uses and Usage*
  - *Landmarks and listed episodes*
    - *Views to and from the site*
- *Access and connectivity (including Thresholds and gateways, Mobility networks, Public transports)*
- *Open spaces network (including bio-diversity corridors)*
  - *Ecology (Flora and Fauna)*
  - *Drainage and “waterscape”*
    - *Topography*
- *Soil quality and contamination*
  - *Services and Utilities*
- *Orientation and microclimate*
- *Potential pollution sources (Noise, air, visual and light)*
- *Planning reference framework (including relevant Future Developments)*
  - *Legal related aspects (for example Ownerships)*

*Design Aims*

***The Civic Square design should:***

- 1*** *Re-establish the prominence of Langside Hall in its setting*
- 2*** *Reinforce the civic nature of the space with public art, opportune lighting and quality materials*
- 3*** *Provide a variety of flexible outdoor spaces/opportunities for community gathering to extend the role of Langside Hall*
- 4*** *De-clutter the space, re-organise utilities, traffic and security*
- 5*** *Manage trees and water better*
- 6*** *Re-define the role of the place as a city/park gateway and the way it connects to its context*
- 7*** *Address the needs of bus travellers and cyclists.*

*.....About Langside Hall*

*To help inform  
your views on a  
new Civic Square,  
here's a few initial  
thoughts about  
design and  
context!*

*The Langside Hall Building, since its relocation early last century, has been used as social hub, a gathering place for a growing community.*

*Currently however the building is disconnected from its surroundings. It is hidden by trees. Its adjacent space acts as a taxi hub, rather than a place for the community.*

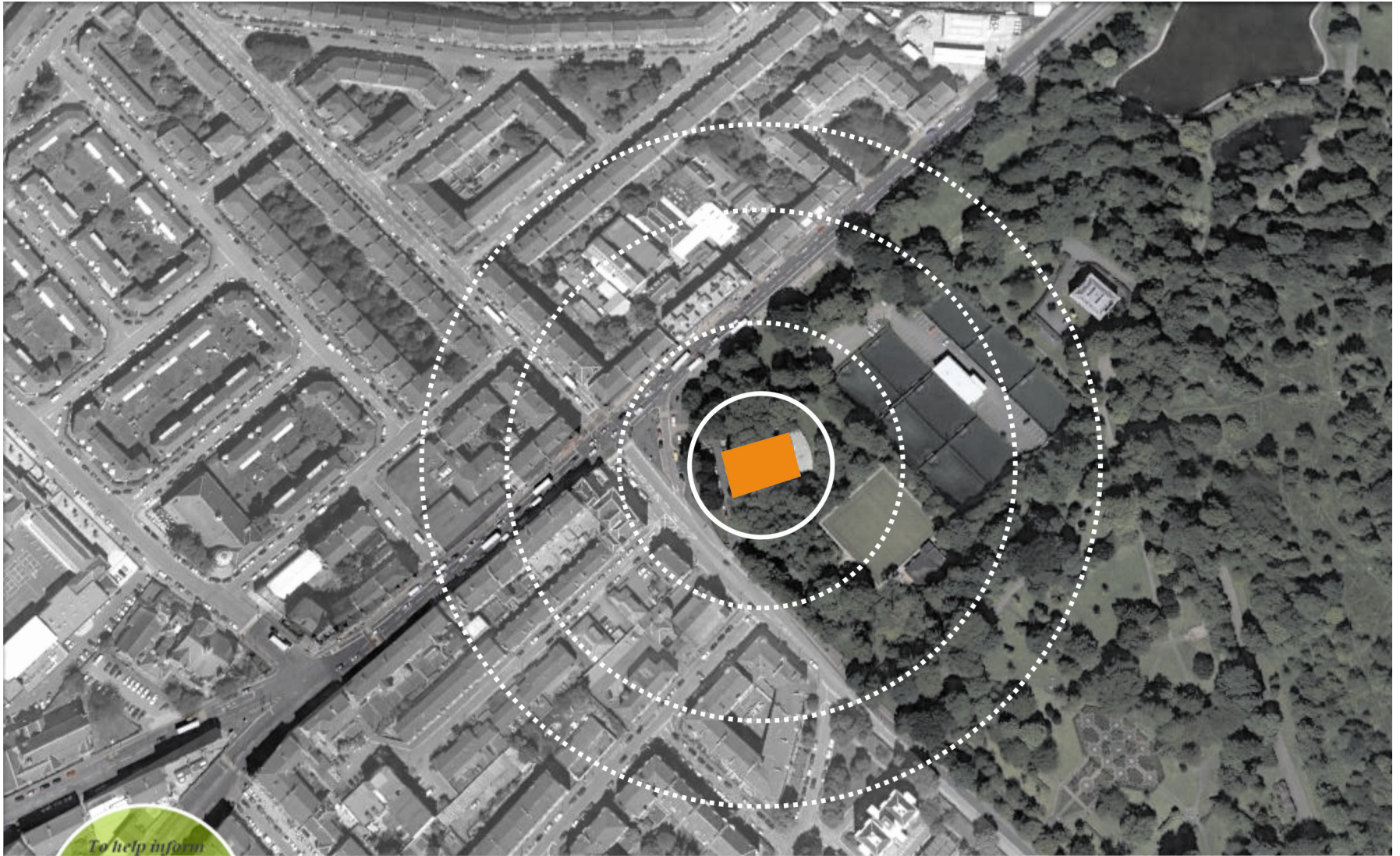
*The creation of a civic space therefore offers the chance to put the heart into the community, develop the potential of the hall and renew the identity of this important gateway..*



- The building sits in a **pivot position between the park and its surrounding context**;
- The main façade of Langside Hall is located on **an axis that corresponds to the historic desire lines of the area**;
- This **axis also represents an important ‘edge’** between the natural environment of the Park and its built up context.
- Because of this, the space surrounding Langside Hall has the potential to become the new gateway to the park;
- This “unifying” role, could generate **a series of different “experiences” which together could create a welcoming, safe and pleasant sense of place**. For example: formal and informal spaces, hard and soft landscapes; places for quiet reflection as well as a lively space hosting activity. It can also include flexible use areas for markets or informal play;
- The new space **will cater for different users** at different times of the day and in different seasons;
- The existing trees can be re-configured to **increase the visibility of Langside Hall**. Important trees should be protected and can inform the pavement design of the new square;
- The design should deliver better water management
- The new place design will need to be informed by a deep **understanding of the specific microclimate conditions**;

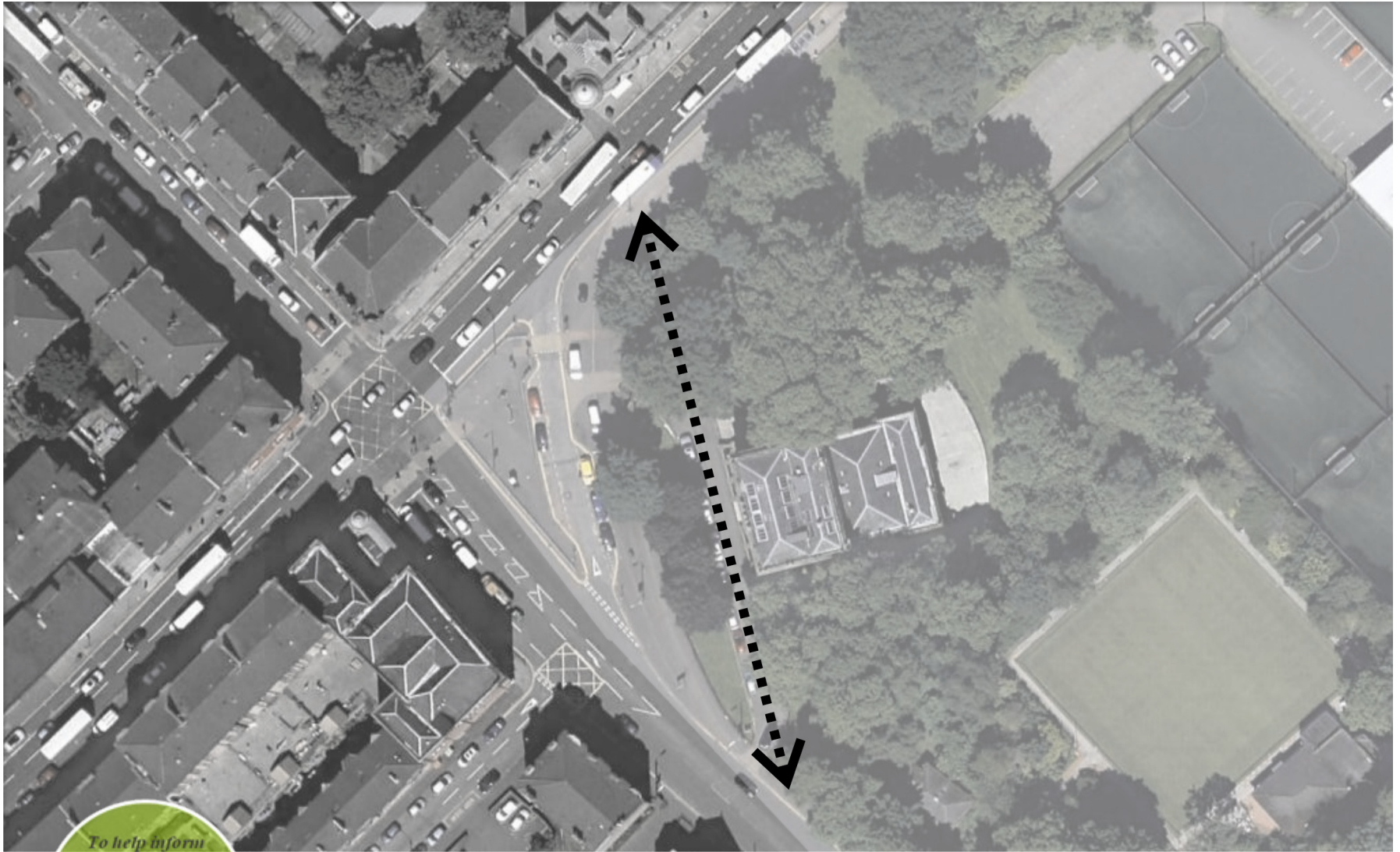


*To help inform  
your views on a  
new Civic Square,  
here's a few initial  
thoughts about  
design and  
context!*



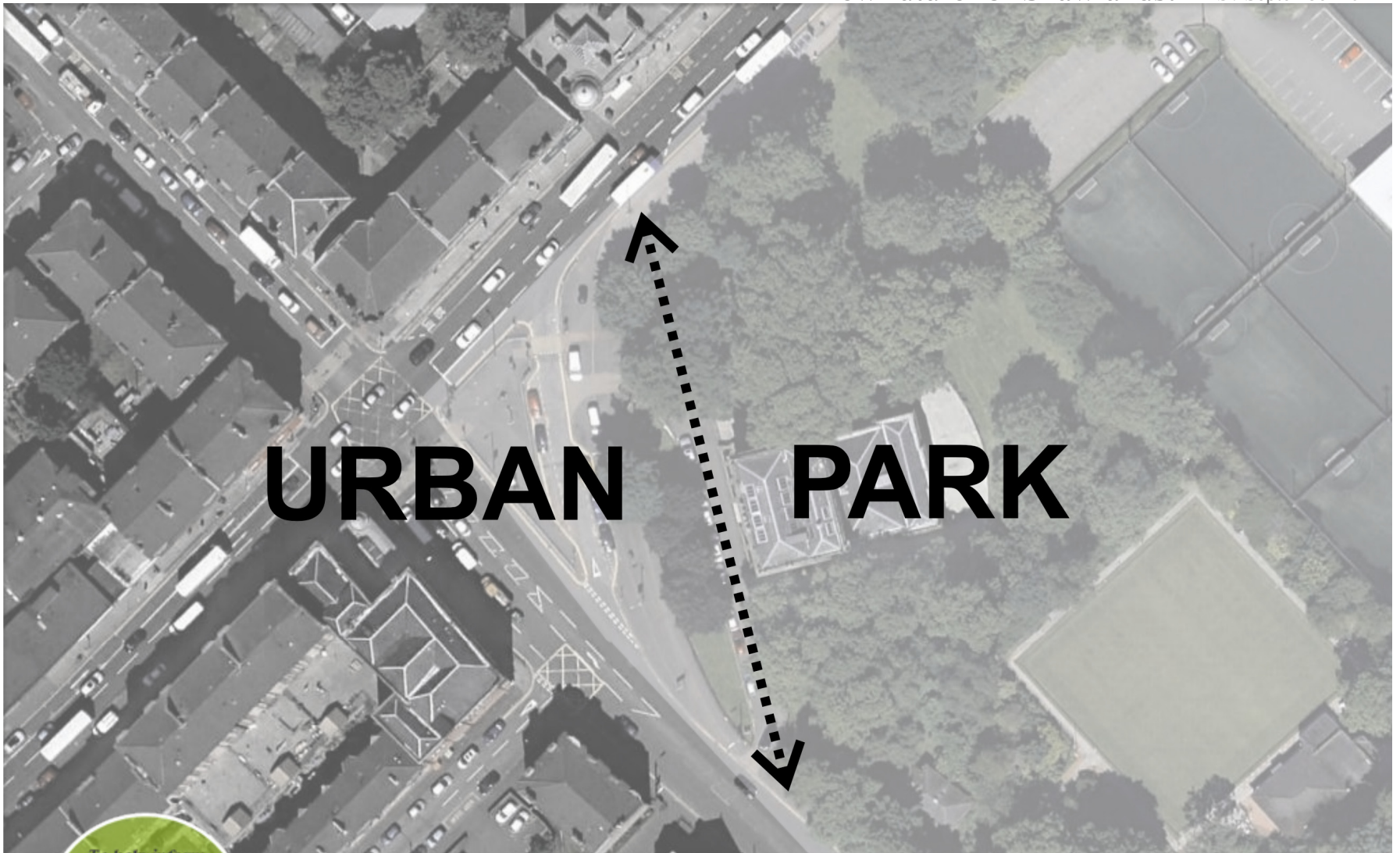
*To help inform  
your views on a  
new Civic Square,  
here's a few  
initial thoughts  
about design and  
context!*

*The building sits in a pivot position between  
the park and its urban context*



*To help inform your views on a new Civic Square, here's a few initial thoughts about design and context!*

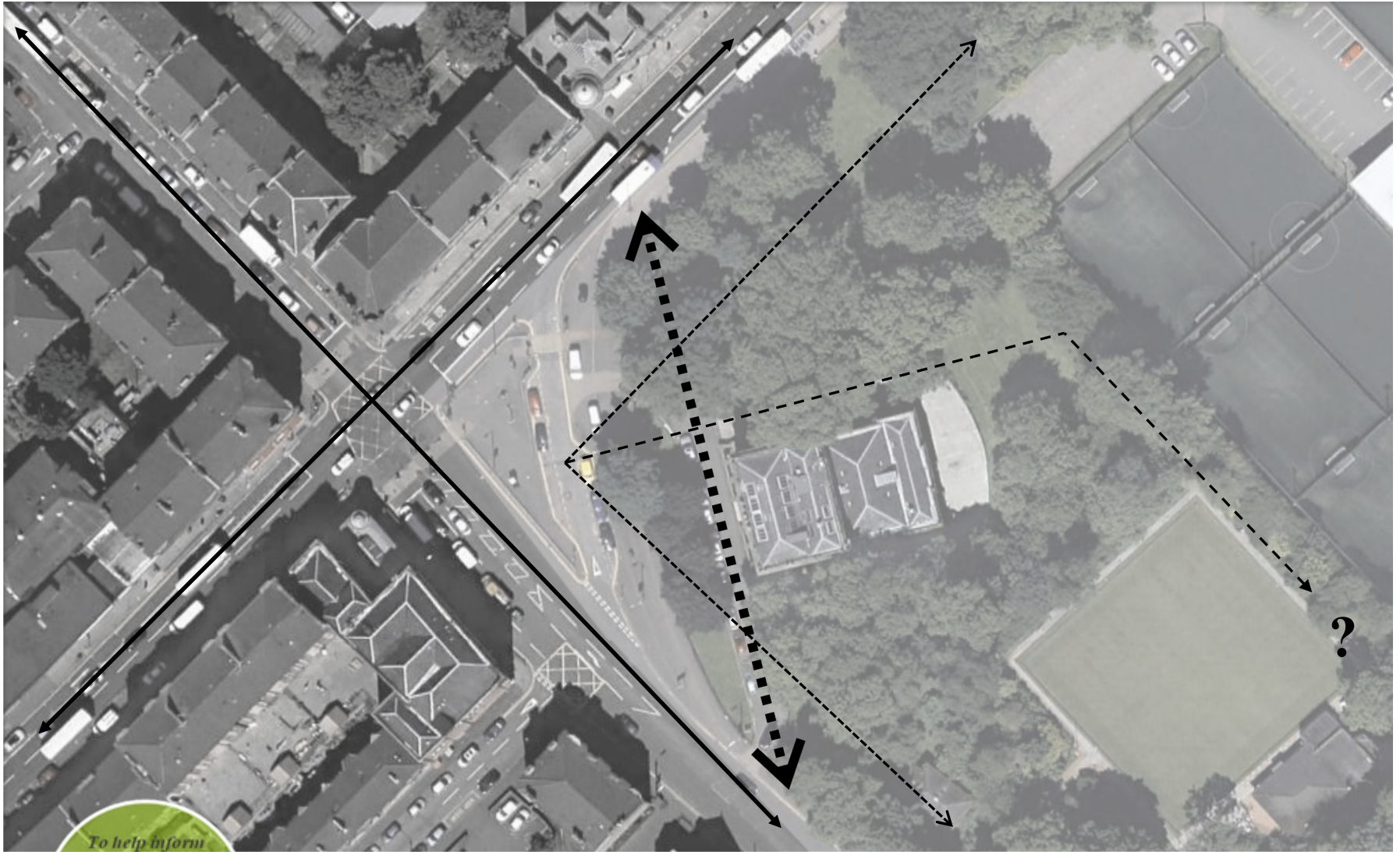
*Its main façade is located on an axis corresponding to a potential major pedestrian desire route of historical relevance*



# URBAN PARK

*To help inform your views on a new Civic Square, here's a few initial thoughts about design and context!*

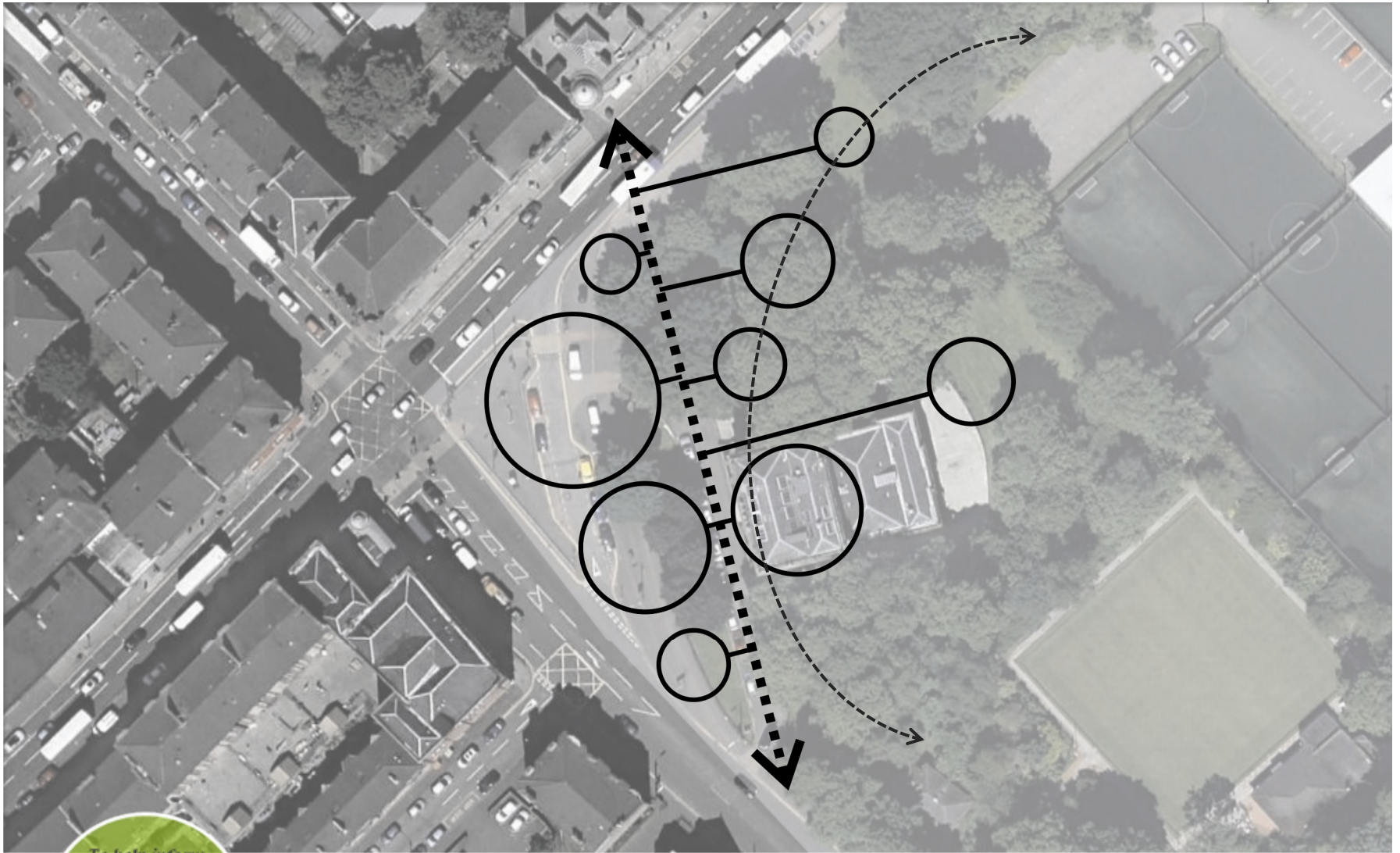
*This axis also represents an “interface” between the natural environment of the Park and its urban context.*



*To help inform your views on a new Civic Square, here's a few initial thoughts about design and context!*

*The space surrounding Langside Hall has the potential to become the new gateway to the park (as well to the city).*





To help inform your views on a new Civic Square, here's a few initial thoughts about design and context!

*Acknowledging this “unifying” role, the axis will generate order to a series of diverse “experiences” that will form a welcoming, safe and pleasant sense of place.*

*To help inform  
your views on a  
new Civic Square,  
here's a few  
initial thoughts  
about design and  
context!*

A new future for Shawlands! DRS / September 2014



*... For example formal and informal hard and soft landscapes; places for a more reflective experience and places for collective activities;  
Quieter spaces and noisier places; Flexible areas for markets or informal play;  
The new space **will cater for different users** at different times of the day and in different seasons;*

*To help inform  
your views on a  
new Civic Square,  
here's a few  
initial thoughts  
about design and  
context!*

A new future for Shawlands! DRS /September 2014

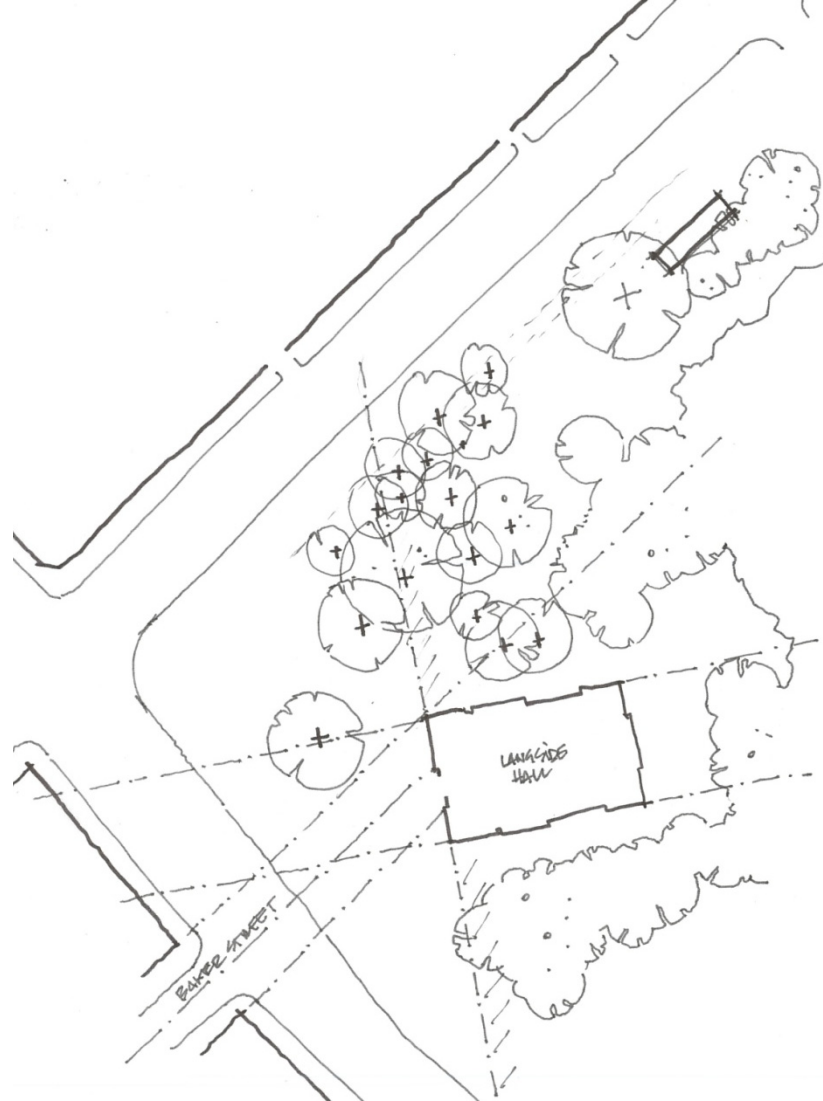


*The existing trees will be re-configured to substantially **increase the presence/visibility of the Langside Hall main façade.** Important specimens will be preserved becoming feature trees and informing the pavement design of the new square;*

To help inform your views on a new Civic Square, here's a few initial thoughts about design and context!



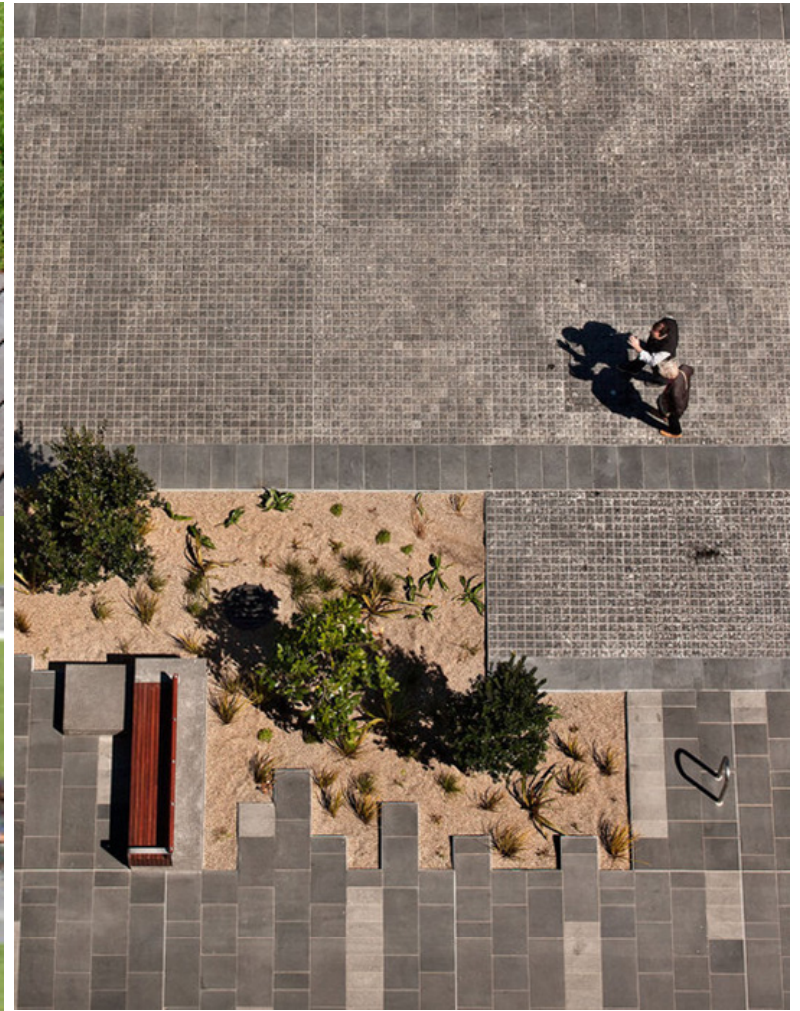
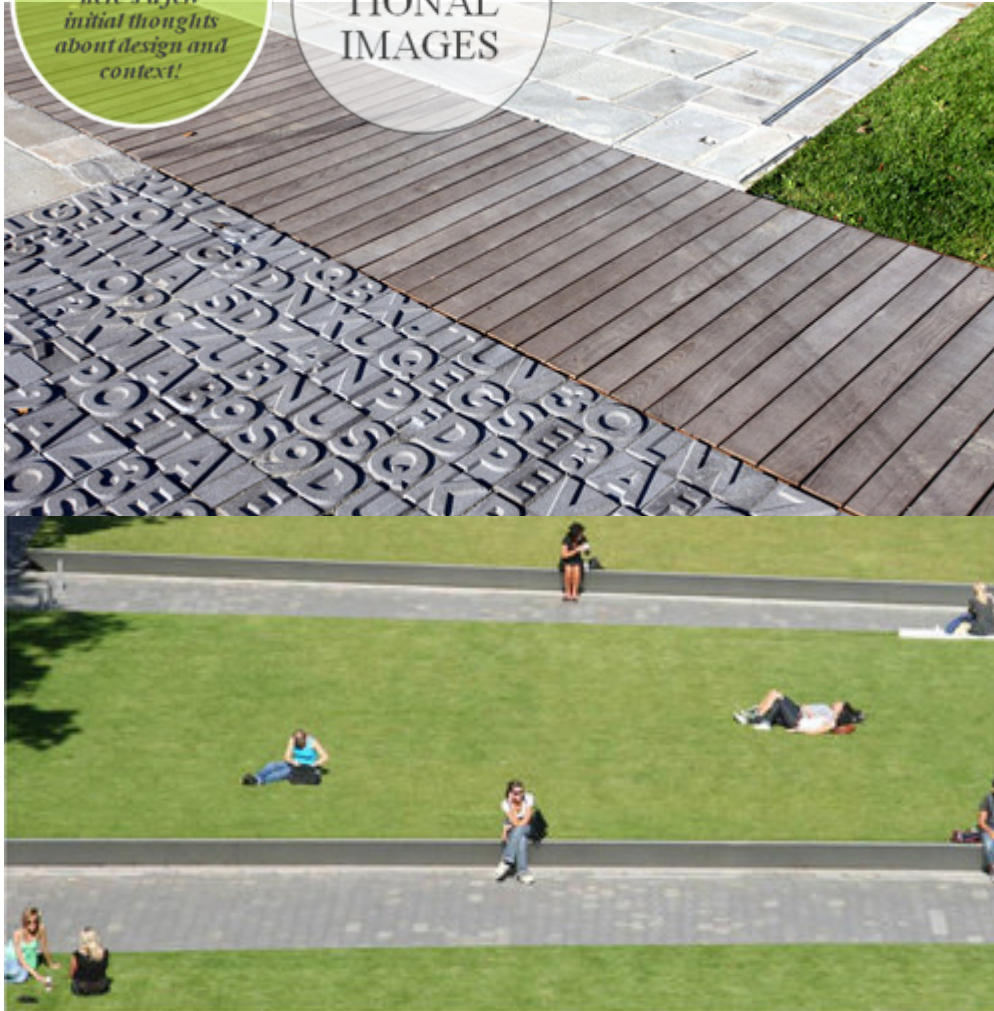
A new future for Shawlands! DRS / September 2014



*The existing trees will be re-configured to ensure Southsiders can actually see a vitally important historic building, (**visibility of the Langside hall main façade**). Important trees will be preserved as features of the new square;*

To help inform your views on a new Civic Square, here's a few initial thoughts about design and context!

INSPIRATIONAL IMAGES



*The materials used will deliver better water management . The surface will require different qualities and permeability ranging from stone to grass (according to changes in levels and uses), and inform the organisation of the place;*



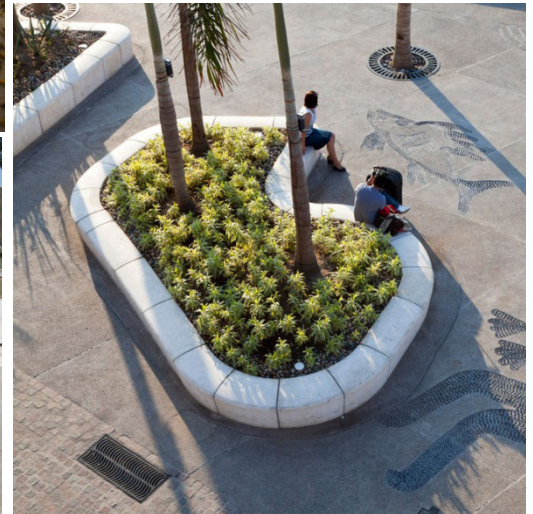
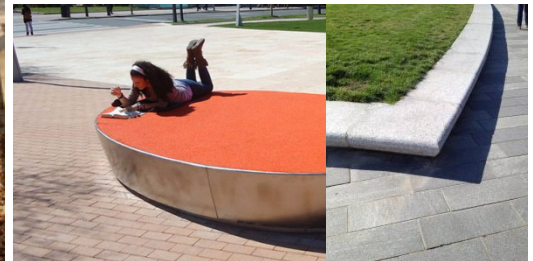
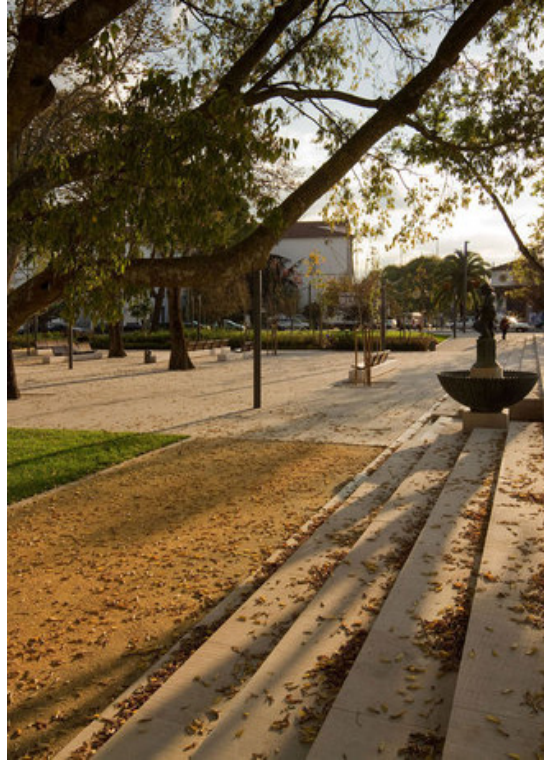
Dust Storm, Dyrango Colony, Dyrango, Mexico, 1924 ©Larry Towell/Magnum Photos

*Last but not least, the organisation of the place will be informed by an overall **understanding of the specific microclimate conditions;***

INSPIRA  
TIONAL  
IMAGES

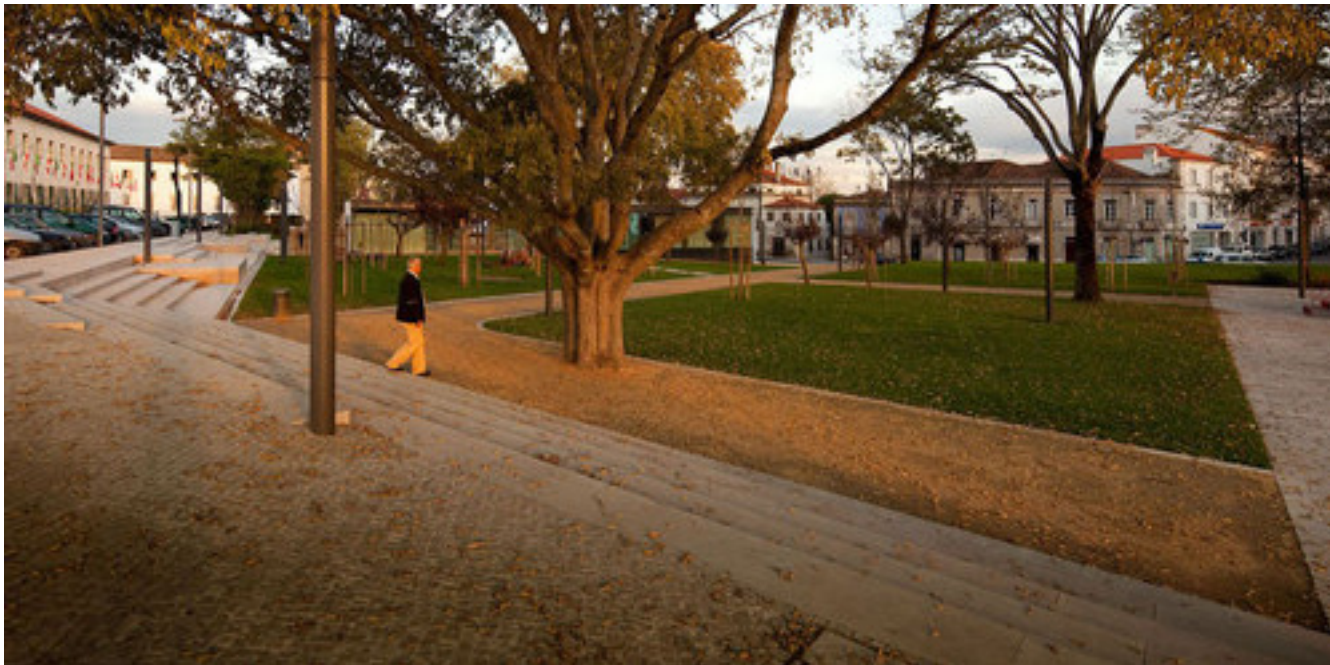
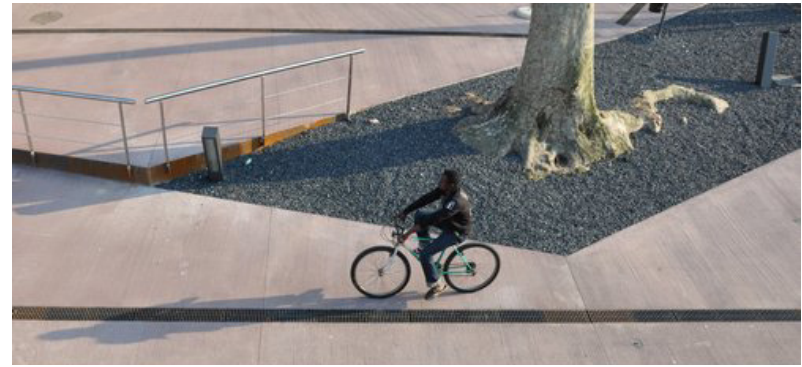
A new future for Shawlands! DRS / September 2014

SEATSCAPEs



INSPIRA  
TIONAL  
IMAGES

A new future for Shawlands! DRS / September 2014





*So what do you think? Questionnaire*

*Do you support the Council's proposal for a new Civic Square at Langside Hall?    YES    NO*

*Please describe your views and aspirations for the square and tell us more about your priorities*

.....  
.....  
.....

*How would the community like to use the space & what would you like to call it?*

.....  
.....  
.....

*What kind of events would you ideally like the square to attract to help support the regeneration of the park, key buildings and the town centre?*

.....  
.....  
.....

*What should be the key priorities when designing the square?*

- Safety
- Accessibility
- Inclusivity
- Ambiance
- Cycling and parking provision
- Ease of maintenance
- Facilities & operations
- Furniture and materials
- Greenery & Landscape
- Heritage
- Public Art
- Purpose of the space
- Traffic flow & public transport
- Water feature
- Lighting.....
- Other.....
- .....
- .....



*A New Future for Shawlands*

***PLEASE TELL US YOUR VIEWS***

*David Dunlop 0141 287 6097*

*Shawlands@glasgow.gov.uk*

*write to*

*Shawlands Civic Square Design Consultation*

*Planning Neighbourhoods*

*DRS*

*Glasgow City Council*

*231 George St*

*Glasgow*

*G1 1QU*

*Or join us at Langside Hall on Wednesday 24<sup>th</sup> September or Saturday 4<sup>th</sup> October.*

