



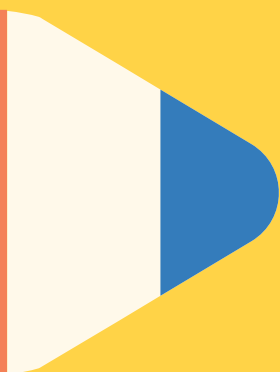
LANGSIDE PRIMARY SCHOOL



School Handbook



SESSION
2023/24



WELCOME TO LANGSIDE



"Working together, to be the best we can be"

On behalf of our whole school community, I would like to welcome you and your child to Langside Primary School.

At Langside our shared values of Respect, Equity, Care and Honesty underpin all that we do.

We are committed to ensuring that every child feels safe and happy in order to provide the best possible chance of success in their learning. We look forward to working with you, as only by working in strong partnership with parents, can we ensure that every pupil meets their full potential.

This handbook contains a range of information that you might find useful. Please do not hesitate to contact us if you wish further information.

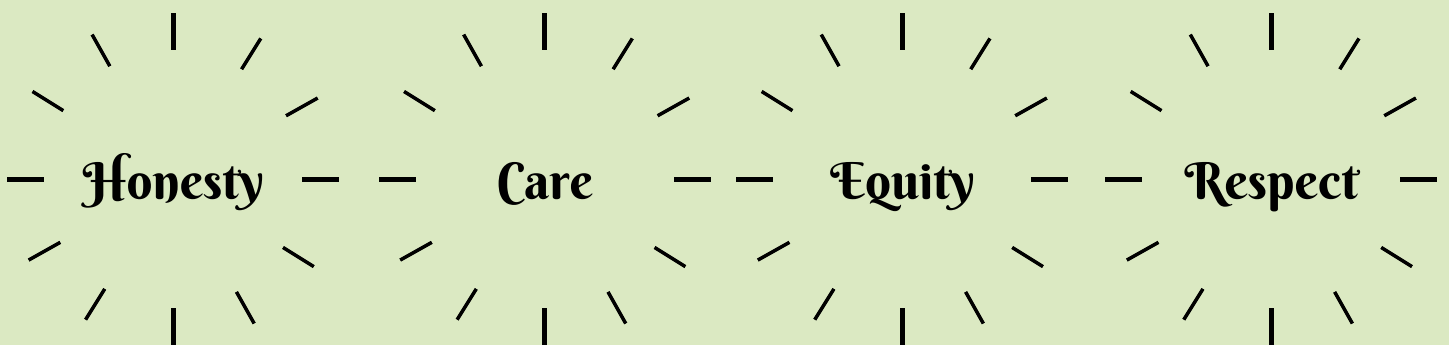
**Paul Meehan
Headteacher**

SCHOOL VISION AND VALUES

At Langside Primary, we

**Learn
Believe
Nurture
Achieve**

We have 4 School Values



SCHOOL INFORMATION



Langside Primary School
233 Tantallon Road
Glasgow
G41 3JW



Telephone: 0141 632 0874

Email: headteacher@langside-pri.glasgow.sch.uk

Twitter: @LangsidePri @LangsideHT

App: Piota Schools (App Store/Google Play)



**We have a Breakfast Club in our school! It runs from 08.00am - 08.45am.
The cost is £2, or free to those who are in receipt of free school meals.**

Our School Day

Soft Start: 8:45am - 9:00am

Morning Break: 10:30am - 10:45am

Lunch: 12:15pm - 1:00pm

Dismissal: 3:00pm



**Langside Primary School is a
co-educational, non-
denominational school. We
teach all stages from P1-P7.
Our current role is 376 and
our capacity is 454.**



**You can cut out the following information and have it on your fridge,
purse or work desk etc. for ease of finding the numbers required.**

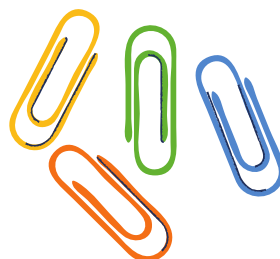
Langside Primary School
233 Tantallon Road
Glasgow
G41 3JW

Telephone: 0141 632 0874

Email: headteacher@langside-pri.glasgow.sch.uk

Twitter: @LangsidePri @LangsideHT

App: Piota Schools (App Store/Google Play)





MEET THE TEAM

A full list is available on the school app and parents will be updated on any changes.

The Leadership Team is as follows...

Headteacher: Mr Paul Meehan

Depute Headteacher (P4-7) : Mr Stephen Nicol

Depute Headteacher (P1-4): Miss Nikki McCormick

Principal Teacher (0.6/0.4): Mrs Natasha Aujla & Miss Lauren Hannah

Principal Teacher: Mrs Hazel Dalglish

Classification for Session 23/24

P1s Mr Jonny Smith

P1m Mrs Vicky Macdonald

P2/1 Miss Louise Hunter

P2 Miss Emily Bright

P3k Mrs Kirsty Kriba

P3w Mr Samuel Webb

P4a Miss Deborah Mechan/ Mrs Kathleen Gray

P4b Mrs Natasha Aujla/ Miss Chloe Letham

P5c Miss Morgan Corrigan/ Miss Lauren Hannah

P5a Mrs Sandra Wright/ Mrs Nicola Camerada

P6c Ms Angela Cole

P6m Mrs Eileen McCall

P7j Mr James Hart/Mrs Hazel Dalglish

P7s Miss Sarah Harrison

Mrs Gormley provides teachers with NCCT and Mrs Seery-Mylet is our EAL teacher.

Mrs Dalglish and Miss Hannah provide additional support for our learners.

Our Support Team for 22/23

Clerical Team

Miss Hayley Docherty

Mrs Suzanne Capaldi

Mrs Laura Frew (Maternity Leave)

Support for Learning Workers

Miss Lindsay McKillop

Mrs Karen Fraser

Ms Susan Cannon

Mr Richard Main

Mrs Liz Hardie

Miss Megan Gordon

Ms Claire McCabe (HWB Worker)

Facilities Management

Mr Richard Hayes



ENROLMENT

Registration of Primary 1 children takes place in November and is advertised widely in local press etc. Prospective parents are normally welcome to visit the school and should contact the school office if they would like an appointment with Mrs Gallen.

This year, due to Covid-19 Restrictions, we will offer an online tour of the school to ensure that parents get a flavour of the school and how we do things. Please contact Mrs Gallen if you would like to ask any questions or require help with registration, enrolment or the transition process.

Enrolment is now conducted online – see the link below.

Families living outwith the catchment area are welcome to make a placing request to attend Langside Primary School but must enrol their child at their local school as a first step. Further information is available using the following link:

<https://www.glasgow.gov.uk/index.aspx?articleid=18426>

ORGANISATION OF CLASSES

The following guidelines set by Scottish Government apply.

P1	maximum 25
P2&3	maximum 30
P4-7	maximum 33
Composite classes	maximum 25

(Composite classes have pupils from more than one stage.)





TERM DATES

Details of holiday dates are available on the Glasgow City Council website:

<https://www.glasgow.gov.uk/index.aspx?articleid=17024>

They are also listed on our school app. (Piota Schools) along with useful dates for your diary.



PUPIL ABSENCE

Within Langside Primary School good attendance is encouraged at all times. Parents are asked to advise us if their son or daughter is going to be absent. This should be done as early as possible on the first day of absence. If the young person is going to be absent for some time, it would be helpful to know at the earliest opportunity. The school uses daily text messaging to inform parents and carers of absence if no contact is made. All unexplained absence is investigated by the school and appropriate action taken.

All calls must be made to the Pupil Absence Reporting Line on: 0141 287 0039.

The line is open between 08.00-15.30 Monday to Friday.

Alternatively you can use the online form on the Glasgow City Council website:

<https://www.glasgow.gov.uk/index.aspx?articleid=18832>



EMERGENCIES

We make every effort to maintain a full educational service, but on some occasions circumstances arise which lead to disruption. Schools may be affected by, for example, severe weather, temporary interruption of transport, power failures or difficulties of fuel supply.

In such cases, we shall do all we can to let you know about the details of our closure or re-opening by using letters, texts and the local media etc.



MEDICAL/HEALTHCARE

The school nurse visits at various times during the year for routine health checks, vaccinations and medical examinations. Parents are kept informed by letter.

If a child becomes ill during the course of the school day, he/she may require to be sent home. Please ensure that you keep the school informed of all contact details.

Parents should inform the school of any medical requirements relating to their child. If a child requires medication during the school day, parents must complete the appropriate medical form. This is available on request from the school office.



SCHOOL UNIFORM

The school uniform is:

- White shirt
- School tie (available to purchase from School Office - £3.50)
- Grey trousers
- Grey skirt

Sweatshirts and polo shirts with the school logo are available from Academy Uniforms Ltd or at www.myclothing.com/Langside-primary-school/17551.school

Our uniform was agreed in consultation with pupils and parents. It is expected that all children attending Langside Primary School will adhere to this dress code.





PARENTPAY

Glasgow City Council have now introduced an online payment solution called ParentPay into all primary and secondary schools across the city. ParentPay is used to pay for all school trips, dress as you please days, concert/school show tickets, uniforms and meals etc and enables us to remove all cash and cheques from school. This also includes a new cashless catering solution and lunch selection, prior to your child coming to school each morning, is strongly recommended.

When you join our school, the office will issue you with an activation letter with all relevant information required to get set up. If you encounter any issues along the way, please don't hesitate to give the school office a call.



PARENTS PORTAL

The Portal - details can be found at <https://parentsportal.scot/home/> - offers 24/7 online access to a child's school for a variety of school-related services, enhancing communication with parents and carers.

Through the Parents Portal, parents and carers can update their - and their child's - details, view the school calendar, complete annual data checks, permission slips and consent forms online.

Future services will include online report cards, viewing of timetables and attendance, and placing requests - with more to follow.

Parents or carers - who will be contacted about the service by the school - must have a MyGov account to use the Parents Portal. Parents or carers can find out more about the secure Myaccount service at <https://www.glasgow.gov.uk/index.aspx?articleid=19869>.



RELIGIOUS OBSERVANCE

In addition to Religious and Moral Education, the school must provide opportunities for religious observance throughout the year. At Langside our older children plan and deliver celebrations of different festivals, events and religions throughout the year that reflect our diverse population. During these assemblies children are given time for reflection where they reflect on the shared values that we have.

Parents have the right to withdraw their child from religious observance and should inform the school in writing. Parents and carers from religions other than Christianity may request that their child be permitted to be absent from school in order to celebrate recognised religious events. Only written requests detailing the proposed arrangements will be considered. Appropriate requests will be granted on up to 3 occasions in any one school session.



PE CLOTHING

It is important that pupils come prepared to learn and for PE this requires appropriate clothing. All jewellery should be removed, including stud earrings. Pupils who are not participating in PE must have a note or a medical certificate. Pupils who are unable to participate in practical PE should still bring their kit to allow them to assist in the lesson, wherever practical and possible, by refereeing, keeping scores or assisting with the distribution of equipment. This ensures that they are still able to take part in some way in the work of the class and do not miss out on the knowledge and understanding of the course. On PE Days, children should wear a school polo shirt (school or plain) with appropriate bottoms (PE is often outdoors so be prepared for the weather!)

We strongly discourage the following items of clothing...

- Could cause offence (such as anti-religious symbolism or political slogans)
- Could cause health and safety difficulties (such as loose fitting clothing, high heels, jewellery)
- Could cause damage to flooring
- Carry advertising particularly for alcohol or tobacco
- Could be used to inflict damage on other pupils



SCHOOL MEALS

Our school provides a lunch service which offers a variety of meals and snacks. Special diets for children with medical requirements can be provided. Further information can be found here:

<https://www.glasgow.gov.uk/index.aspx?articleid=17885>

Children who prefer to bring packed lunches can choose to eat outside in the playground or can be accommodated in the dining hall.

All children in P1-5 are entitled to a free school meal. Families should select lunches, prior to the school day, through Parent Pay to ensure your child receives exactly what they would want for lunch.

If you plan to send your child to breakfast club, you should inform the staff of any medical dietary requirements.

Children and young people of parents/carers receiving Income Support, income-based Job Seekers Allowance, Working Tax Credit (see link below for thresholds), Child Tax Credit only (check link below for thresholds), Universal Credit (see link below for thresholds) and income-related Employment and Support Allowance are entitled to a free midday meal. Information and application forms for free school meals may be obtained at - <https://www.glasgow.gov.uk/index.aspx?articleid=17885>

Weekly menus are shared on our twitter page and on our school app. We strongly recommend taking the time to discuss the lunch options with your child and plan accordingly to ensure they have lunch each day

Parents and Carers should now order school lunches online in advance of sending your child to school each day. This helps to prepare your child for the day ahead. Lunch choices are made through Parent Pay - please see information on page 10 to find out more about this.





SECONDARY TRANSITION

Children and young people normally transfer between the ages of 11 ½ and 12 ½, so that they will have the opportunity to complete at least 4 years of secondary education. Parents and carers will be informed of the school arrangements no later than December of P7.

Children from our school normally transfer to:

Shawlands Academy Secondary School

31 Moss-side Road

Glasgow

G41 3TR

Phone: 0141 582 0210

Email: headteacher@shawlandsacademy.glasgow.sch.uk

www.shawlandsacademy.glasgow.sch.uk



Shawlands Academy staff work with our pupils from Primary 6 onward to prepare them for the transfer to secondary school.





COMMUNICATION

At Langside Primary School we use a variety of ways to keep in touch.

If you have any concerns regarding your child please contact the School Office who will direct you to one of the Senior Leadership Team.

Open Door Policy – Mr Meehan, Mrs Gallen and Mr Nicol try to be available for all parents and carers providing they are not teaching or in another meeting. Please either pop in to the school office, or phone, to make an appointment.

Positive Start Meetings – Parents of children in P1 & 2, as well as those with additional support needs, will be invited to attend Positive Start Meetings in August/September. This allows parents and children to review how well children are settling in, and agree, as appropriate, any necessary intervention. P3-7 are offered the chance to drop-in and Meet the Teacher. This gives parents the opportunity to chat informally to the teacher about how their child is settling in their new class.

Home Learning – Teachers use Seesaw to provide choice of tasks each month, with set tasks in literacy and numeracy issued each week. Samples of children's work is sent home regularly on Seesaw so that parents know what is being learned in school. Successes are shared and celebrated through Seesaw.

Class Termly Overview – This will be sent out on a regular basis to keep parents informed about the life and work of the school. We are working hard towards becoming a 'paper-less' school and will therefore email newsletters to parents.

Weekly Updates – The HT will send a weekly update with any necessary/relevant information parents/carers need to know. This replaces 'termly' or 'monthly' whole school newsletters.

School app/Twitter – will contain a great deal of information about the school. It is a good idea to check this regularly.

Text messaging – You may also receive text reminders about events/school closures etc.

Meetings – Parents and carers are welcome in the school to discuss any aspect of their child's development and progress. To avoid disappointment, it is advisable to make an appointment. There are Parents' Evenings held in November and March when parents can discuss their child's progress with the class teacher and view the child's work. When restrictions lift we look forward to welcoming parents into the school at a range of other events throughout the school year e.g. workshops, class assemblies, information evenings, open afternoons, coffee mornings, class performances and activities. The school newsletter and website will keep you informed. While coronavirus restrictions are in place then we will try to engage online as often as possible by sharing successes and learning on Seesaw, sharing online assemblies, Christmas performances online and virtual Meet the Teacher sessions.



EMERGENCY CONTACT INFORMATION

At the start of each school session, parents will be issued with the annual data check form/emergency contact details form. Please ensure that this is completed and returned to the school. It is also important that you let us know if there are changes to your telephone number(s) or to those of your emergency contacts throughout the year. Please contact the school office to inform us of any changes and updates.



HOW WE USE YOUR DATA

We collect information about children attending school (and also about parents/carers, emergency contacts etc. provided in the annual data check) to allow us to carry out the Council's functions as the education authority for the City of Glasgow. This may sometimes involve releasing personal information to other agencies and other parts of the Council, particularly in relation to child protection issues or criminal investigations, and it may also be used for research purposes (see the link below for more details regarding this).

Information held by the school is, in legal terms, processed by Glasgow City Council. The Council is registered as a data controller under the Data Protection Act 2018 and all personal data is treated as confidential and used only in accordance with the Data Protection Act, the General Data Protection Regulations, and the Information Use and Privacy Policy approved by the City Council. For more information on how we use personal information, or to see a copy of the Information Use and Privacy Policy, see <https://www.glasgow.gov.uk/index.aspx?artcileid=18010>

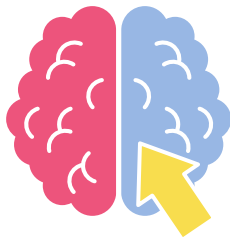
Education specific privacy statements can be accessed at <https://www.glasgow.gov.uk/index.aspx?artcileid=22069>



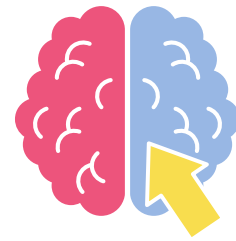
THE CURRICULUM

Curriculum for Excellence has been introduced to raise standards of learning and teaching for all 3 to 18 year olds. It aims to help prepare children and young people with the knowledge and skills they need in a fast changing world. As part of Curriculum for Excellence all children from pre-school to the end of S3 will receive a rounded education known as a Broad General Education (BGE). Curriculum for Excellence is all about bringing real life into the classroom and taking lessons beyond it.

Through the experiences we provide at Langside Primary School we want our children to become Successful Learners, Confident Individuals, Responsible Citizens and Effective Contributors. We are committed to providing children with a broad general education and focus on eight curriculum areas.

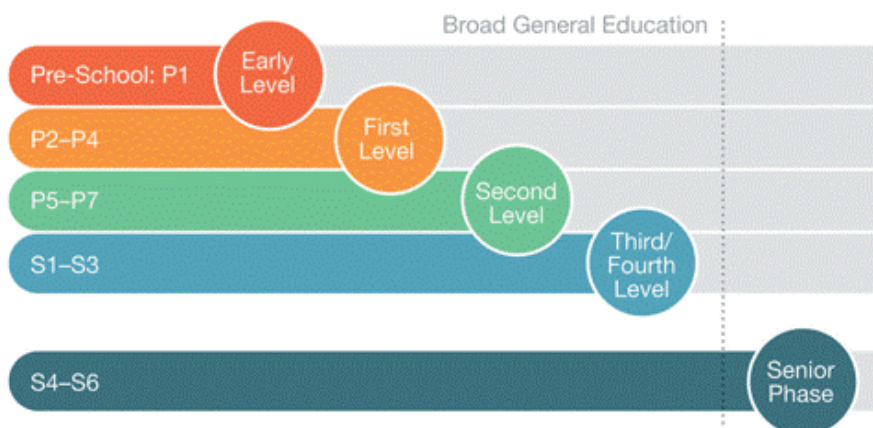


Literacy and Languages
Mathematics and Numeracy
Health and Wellbeing
Science
Social Studies
Expressive Arts
Digital Technologies
Religious and Moral Education



Progress in learning is indicated through curriculum levels as detailed below.

Early Level - The pre-school years and P1 or later
First Level - To the end of P4, but earlier or later for some
Second Level - To the end of P7, but earlier or later for some
Third & Fourth Levels - S1-S3, but earlier for some





CURRICULAR AREAS

Expressive Arts: The inspiration and power of the arts play a vital role in enabling our children and young people to enhance their creative talent and develop their artistic skills. The confidence built through Expressive Arts has tremendous spin-offs for confidence in learning generally.

Health and Wellbeing: Learning in health and wellbeing ensures that children and young people develop the knowledge, understanding and skills which they need now and in the future to help them with their physical, emotional and social wellbeing.

Your child will be provided with 2 hours of Physical Education each week.

Science: Science and its practical application in healthcare and industry is central to our economic future, for our health and wellbeing as individuals and as a society.

Social Studies: Through social studies, children and young people develop their understanding of the world by learning about other places, societies and people, both past and present, their beliefs and values.

Religious and Moral Education: Religious and moral education includes learning about Christianity, Islam and other world religions, and supports the development of beliefs and values.

Literacy and Languages: Learning to listen, talk, read and write provides key skills for learning life and work. Literacy extends beyond working with traditional printed text to include audio and other forms of visual text, and addresses a wide range of genre. Knowing other languages and understanding other cultures, is a 21st century skill set for students as they prepare to live and work in a global society.

Numeracy and Mathematics: Numeracy and Mathematics equips us with the skills we need to calculate, interpret and analyse information, simplify and solve problems, assess risk and make informed decisions – all key life skills.

Technologies: The range of subjects in technical education has changed significantly over the last two decades and now includes craft, design, engineering and graphics. This subject helps illustrate the application of science in the world.

There will be opportunities throughout the year for parents and carers to learn more about aspects of the curriculum and to be consulted about significant changes if appropriate.

Further information about curricular areas and Learning and Teaching Policies can be found on our school app.



ASSESSMENT & REPORTING

All children are assessed both formally and informally throughout the year. This allows children and their teachers to identify their strengths and areas for improvement. A variety of assessment methods are used to enable staff to pass on information to parents about the progress of their child. Assessment records are kept by the class teacher and form the basis of discussion at Parents' Evenings in November and March. An annual report is sent to parents towards the end of each school year.

If you have any concerns about your child's progress do not hesitate to contact the school. Mrs Gallen is ASL Co-ordinator for P1-4 and Mr Nicol is the ASL Co-ordinator for P5-7.



SUPPORT FOR LEARNERS

The school has a duty to ensure that all pupils have equal access to the curriculum, with appropriate support for their needs if required. This applies to the content of lessons, teaching strategies and minor adaptations to the school environment. There are a wide range of factors which may act as a barrier to learning. We are committed to working closely with parents and carers to ensure that they are fully involved in any decisions about support for their children's needs.

Any parent or carer seeking further advice regarding this policy should contact the Headteacher in the first instance.

Further advice information and support relating to additional support needs is available on the Glasgow City Council website at <https://www.glasgow.gov.uk/index.aspx?articleid=18941>
Information on the Glasgow City Councils' Parental Involvement Strategy can also be found at <https://www.glasgow.gov.uk/index.aspx?articleid=17870>



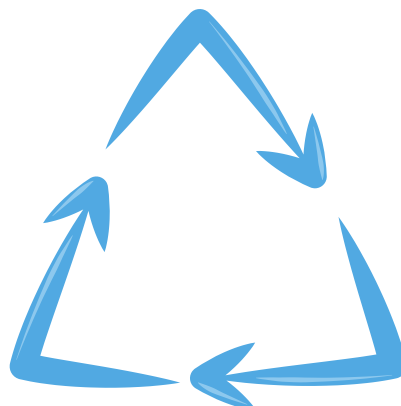
GLASGOW: THE NURTURING CITY

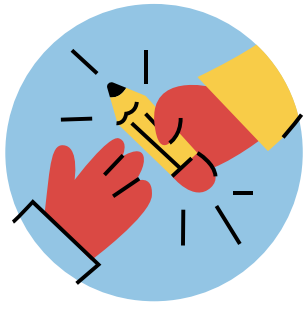
The Glasgow City Council vision 'Towards a Nurturing City', puts building positive, trusting relationships at the core of our work. We ensure children, young people and families feel that they belong, they are listened to and that they are valued by embedding the principles of nurture across our Early Years, Primary and Secondary establishments. Staff are trained in attachment and nurture which deepens understanding of child development and enhances effective practice by responding to the needs of all children and young people in a consistent and caring way. Nurture is a universal approach which builds resilience, helping to reduce the impact of adversity. Effective communication and collaboration with parents and carers builds an ethos of partnership working putting the child at the centre, fostering high quality learning contexts.

Each of our nurturing establishments contribute to the development of Glasgow as a nurturing city, creating safe environments which allow children and young people to flourish by raising attainment and promoting positive mental health and wellbeing.

SCHOOL IMPROVEMENT

On an annual basis you will receive a copy of our Standards and Quality report. Copies from previous years are available on the school app. The Standards and Quality Report highlights progress in key curricular areas such as literacy, numeracy and health & wellbeing. Our priorities for improvement are detailed in our School Improvement Plan which is discussed with our Parent Council. Any parent or carer can request a copy from our school office or check out our school app.



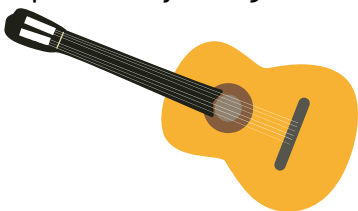


PROMOTING POSITIVE BEHAVIOUR & RELATIONSHIPS

Children's Rights as outlined in the UNCRC (United Nations Convention on the Rights of the Child) are fundamental to a good school ethos. Adults in our school will work with children to ensure they are aware of their rights and fully respect the rights of others. Therefore, the approach within Langside Primary School is to build a positive ethos that demonstrates care and respect for all. Positive behaviour is recognised and celebrated. Our school operates a system of class charters guided by the School Values to set out expected behaviour. Our relationships policy outlines the importance of positive behaviour and how these relationships will be nurtured.

In addition each child will be assigned to a House – Murray, Harris, Hoy or Macdonald, led by House Captains and Vice Captains who have been elected by their own House. Children can collect tokens for their House in recognition for living the school values. The winning House will get a special treat at the end of the term.

The highest standards of behaviour are expected of pupils at all times. Where this is not the case, a variety of sanctions are used. Parents are asked to co-operate with the school in encouraging a sense of responsibility and good behaviour choices in their children.

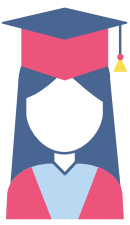


EXTRA-CURRICULAR

We have a wide range of activities that run between Monday and Friday to extend the learning experience. These have included Coding, Hockey, Football, Choir, Karate, Judo, Art, Gymnastics, Basketball, Badminton, Rugby and Team Building. Please check your child's schoolbag for information as places are popular and usually limited.

Good links with community organisations and our Active Schools Co-ordinator, Steven Gilliland, are vital for the success of these programmes.





PUPIL COUNCIL

Our Pupil Council is made up of a representative from each class in P1-7. This is an important group which ensures that the views of pupils are heard, and provides a valuable way of assisting the Headteacher with school improvement.



PARENT/TEACHER COUNCIL

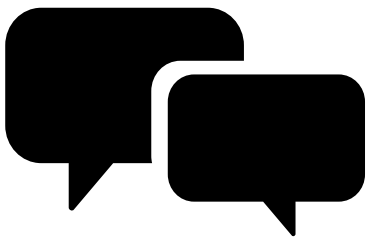
We have a very active Parent Teacher Council (PTC) that represents the views of all parents. All parents are welcome to attend PTC meetings and can become members at the AGM. PTC minutes are available on the PTC website and on request from the school office. The current chair of the PTC is Sharon Morrison. A list of current members is also available on the website.

Website: www.langsideptc.co.uk/ Twitter: @LangsidePTC



HOME LEARNING

Continuing to learn at home helps children to achieve more and is a vital part of our partnership with parents. Please check your child's Seesaw account for communication about home learning and specific tasks



COMMENTS/ COMPLAINTS

In Langside Primary School we aim to have positive relationships across our school community. However, if you have a comment or complaint about any aspect of school life, please contact the Headteacher in the first instance. Glasgow City Council complaints procedures are available: <https://www.glasgow.gov.uk/index.aspx?articleid=16133>

Customer Care Team
Customer & Business Services
Glasgow City Council
City Chambers
Glasgow G2 1DU

Tel: 0141 287 0900
E-mail: customercare@glasgow.gov.uk or
education.customercare@glasgow.gov.uk



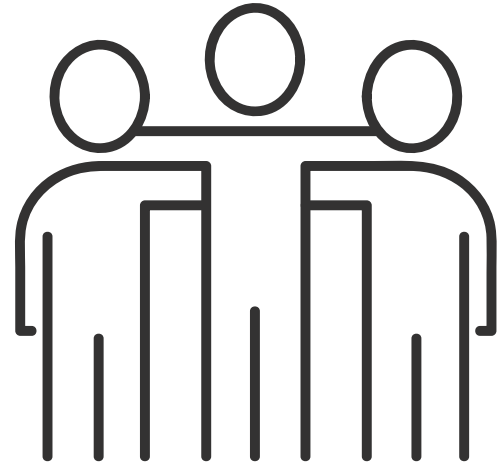
USEFUL CONTACTS

Education Services
City Chambers East
40 John Street
Glasgow G1 1JL

Tel: 0141 287 2000
www.glasgow.gov.uk

Sheena McGuinness
Langside After-School Care Association (L.A.S.C.A)
c/o Langside Primary School
233 Tantallon Road
Glasgow G41 3 JW

Tel: 0141 636 1297



Parentzone Scotland is a unique website for parents and carers in Scotland, from early years to beyond school. The website provides up-to-date information about learning in Scotland, and practical advice and ideas to support children's learning at home in literacy, numeracy, health and wellbeing and science. Information is also available on Parentzone Scotland regarding additional support needs, how parents can get involved in their child's school and education. Furthermore, the website has details about schools including performance data for school leavers from S4-S6; and links to the national, and local authority and school level data on the achievement of Curriculum for Excellence levels. Parentzone Scotland can be accessed at <https://education.gov.scot/parentzone>.

Connect

Connect is a national organisation that provides advice and resources for parents and carers. www.connect.scot

DISCLAIMER

ALTHOUGH THIS INFORMATION IS
CONSIDERED CORRECT AT THE
TIME OF PUBLISHING, THERE
COULD BE CHANGES AFFECTING
THE MATTERS DEALT WITH IN THIS
HANDBOOK.